

Woodard & Curran – Scituate Water Plant Tree Inventory and Management Plan | 2023

Submitted by:
Bartlett Tree Experts

Timothy Armstrong, Consulting Arborist

ASCA Registered Consulting Arborist #790, ISA Board Certified Master Arborist #NE-7132B, Massachusetts Certified Arborist #2464, ISA Tree Risk Assessment Qualified

Abe Monahan, Local Manager, Hanover Office

ISA Certified Arborist #NE-6712A, ISA Tree Risk Assessment Qualified



Bartlett Tree Experts
Hanover Office
149 Winter Street
Hanover, Massachusetts 02339
781-829-9149
www.bartlett.com

TABLE OF CONTENTS

MAKING THE MOST OF YOUR INVENTORY	1
Who's Who.....	1
Subject Trees.....	2
Definitions & Bolded Terms.....	2
How This Document is Organized.....	2
EXECUTIVE SUMMARY	3
INTRODUCTION	3
GOALS & OBJECTIVES	3
GOALS & OBJECTIVES TABLE.....	5
DATA COLLECTION & TREE INSPECTION METHODOLOGY	5
Data Collection Equipment & Attribute Data.....	5
Specifications/Definitions.....	6
Age Class	6
Height Class.....	6
Condition Class	6
STAND DYNAMICS RESULTS	8
Stand Dynamics	9
Tree Species Identified	9
SPECIES BREAKDOWN TABLE	9
2023 TREE INVENTORY MAP.....	11
Condition Class	12
CONDITION CLASS TABLE	12
CONDITION CLASS MAP	13
Age Class	14
AGE CLASS TABLE.....	14
AGE CLASS MAP	15
Tree Size (DBH)	16
Plant Health Care	17
PLANT HEALTH CARE TABLE	17
DEFECTS OR OBSERVATIONS	18
DEFECTS OR OBSERVATIONS TABLE	20
SAMPLE PLOT INVENTORY	39

SAMPLE PLOT MAP	41
TREES WITH EXPECTED IMPACTS	45
ENTIRE INVENTORY	49
ENTIRE INVENTORY TABLE	49

Town of Scituate Water Plant Tree Inventory

MAKING THE MOST OF YOUR INVENTORY

The following tips will assist you in making the most of this document:

Who's Who

Those who conducted the inventory and prepared this document are members of the Bartlett Inventory Solutions team. They are also employees of Bartlett Tree Experts. The Bartlett Inventory Solutions team is overseen by Technical Advisors out of the Bartlett Tree Research Laboratories in Charlotte, North Carolina. The advisors are primarily charged with client support, coordination, quality control, and documentation of inventories and the related data. Extensively trained Regional Inventory Arborists from local Bartlett Tree Experts offices are the primary data collectors and authors of the management plans. Readers may interpret the terms "Bartlett Tree Experts," "Bartlett," "the Inventory Team," "the team," "we," and "our" as the Bartlett company and those who conducted the inventory and prepared this management plan. In addition to the primary author(s) listed on the cover page, Team Member(s) involved in this project included:

Data Collection

Kat Cummings, Regional Inventory Arborist

ISA Board Certified Master Arborist & Municipal Specialist #NE-7396BM,
ASCA Registered Consulting Arborist #781
Massachusetts Certified Arborist #102013, ISA Tree Risk Assessment Qualified

Tim Armstrong, Regional Inventory Arborist

ISA Board Certified Master Arborist #NE-7132B,
ASCA Registered Consulting Arborist #790
Massachusetts Certified Arborist #2464, ISA Tree Risk Assessment Qualified

Subject Trees

In this document, the term "subject trees" refers (depending on context) to some or all of the 573 trees over 12" diameter at breast height included in the inventory.

Definitions & Bolded Terms

Some definitions or specifications are detailed within a given section to explain how readers should interpret certain terms or classifications.. The first reference to each of these terms appears in bold for the reader's convenience.

How This Document is Organized

An outline appears below that introduces the order in which the sections of the management plan will appear. The management plan layout is as follows:

- **Table of Contents**
 - Road map for the management plan
- **Making the Most of Your Inventory Management Plan**
 - Explanations for how to efficiently and effectively understand and navigate this management plan document
- **Executive Summary**
 - Synopsis of the major findings and recommendations
- **Introduction**
 - Brief explanation of the inventory and what was included
- **Goals & Objectives**
 - Explanation of the specific goals and objectives for this inventory
- **Data Collection & Tree Inspection Methodology**
 - Lists, explanations, and definitions of all data collected during the inventory
- **Stand Dynamics Results**
 - Summary information for the entire tree population inventoried
- **Defects or Observations**
 - List of all trees observed to have defects in the field in a table view with associated descriptive figures and maps if applicable
- **Entire Inventory**
 - List of all trees collected in a table display

EXECUTIVE SUMMARY

In October 2023, the Bartlett Inventory Solutions (BIS) Team from Bartlett Tree Experts conducted an inventory of trees on the 453 Chief Justice Cushing Highway site. We identified 573 trees which included 12 species. Trees inventoried were above 12" DBH. The attributes that we collected include tree latitude and longitude, size, age and condition class, and a visual assessment of tree structure, health, and vigor. In addition to the inventory of the border area, we performed a sample inventory of two, 1/10th acre sample plots in the interior.

By estimating the number of trees within the interior based on the sample plot data, 496 trees over 12" DBH are expected to be removed. The 573 trees over 12" DBH inventoried in the perimeter are expected to remain.

We conducted the attribute collection using a sub-meter accuracy Global Positioning Satellite Receiver (GPSr) device with an error-in-location potential of not greater than three meters.

INTRODUCTION

In October 2023, Woodard & Curran retained Bartlett Tree Experts to perform an inventory of trees on at the location of the future Scituate water plant. Team members Kat Cummings and Tim Armstrong visited the site on October 16th and 17th 2023 to conduct the inventory.

The inventory included:

- identifying trees and assigning a Tree ID number (Tree ID numbers ranging from 1 to 573);
- identifying the trees' condition, health, and vigor;
- recommending risk evaluations and removals of appropriate trees;
- recommending tree care, soil care, structural support, and pest management treatments to promote tree safety, health, appearance, and longevity; and
- mapping the trees using GPSr hardware and Geographic Information System (GIS) software, and Bartlett Tree Experts' ArborScope™ web-based management system
- collect data in two, 1/10th acre sample plots of the interior area planned to be disturbed by the construction of the water plant

The methods and procedures we used to make the above determinations and recommendations are detailed in the following sections.

GOALS & OBJECTIVES

An effective management plan communicates clear goals and the specific objectives designed to carry out those goals. We intend "goal" to mean the overall aim or result we expect to achieve for the client in producing the inventory and management plan. The objectives are

the specific actions taken or recommended to support goal completion. The table below describes each goal and its corresponding objective(s).

GOALS & OBJECTIVES

GOAL	OBJECTIVES TO ACCOMPLISH GOAL
Establish the tree inventory (per numbers agreed) on the Scituate MA site.	<ul style="list-style-type: none"> • Using Trimble® Geo GPSr hardware and ArborScope™ Inventory Management Tools, collect data such as tree name, location, size, age class, and condition class. • Assign a Tree ID number to each tree inventoried.
Provide mechanism for managing tree inventory.	<ul style="list-style-type: none"> • Provide map or maps of the inventoried trees to assist the client in managing property areas. • Submit a comprehensive report that documents and organizes findings and provides other resources to assist the client in efficient use of the information.

DATA COLLECTION & TREE INSPECTION METHODOLOGY

In conducting the inventory, we used specialized equipment and software and followed specific procedures to determine tree characteristics, risk evaluations, and recommendations. The following explanation will assist the reader in interpreting the findings of this management plan.

Data Collection Equipment & Attribute Data

The Inventory Team used Trimble® Geo GPSr hardware units, TerraSync® and GPS Pathfinder® Office GIS software, and Bartlett Tree Experts' ArborScope™ web-based management system to inventory the trees. The attribute data we collected on site are listed below.

- botanical name and regional common name according to local ISA Chapter Tree Species List
- tree location based on GPS coordinate system
- tree ID number
- diameter at breast height (DBH)
- canopy radius
- age class
- height class
- condition class
- noted defects/observations
- observed pests/diseases

Specifications/Definitions

Age Class

New Planting	Tree not yet established
Young	Established tree but not in the landscape for many years
Semi-mature	Established tree but has not yet reached full growth potential
Mature	Tree within its full growth potential
Over-mature	Tree that is declining or beginning to decline due to its age

Height Class

Small	Less than 15 feet
Medium	15 to 40 feet
Large	Greater than 40 feet

Condition Class

Dead	
Poor	Most of the canopy displays dieback and undesirable leaf color, inappropriate leaf size or inadequate new growth. Tree or parts of tree are in the process of failure.
Fair	Parts of canopy display undesirable leaf color, inappropriate leaf size, and inadequate new growth. Parts of the tree are likely to fail.
Good	Tree health and condition are acceptable.

STAND DYNAMICS RESULTS



STAND DYNAMICS RESULTS

In reviewing the results and recommendations, the reader will find useful the specifications and definitions detailed in the preceding methodology above. We used the following categories to organize the stand dynamics results, which are displayed in tables:

- **Subject Trees Summarized According to:**
 - Tree Species Identified
 - Condition Class
 - Age Class
 - Tree Size per DBH

Where appropriate, we have included explanations, photos, drawings, or other information to illuminate the table contents.

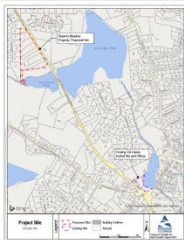
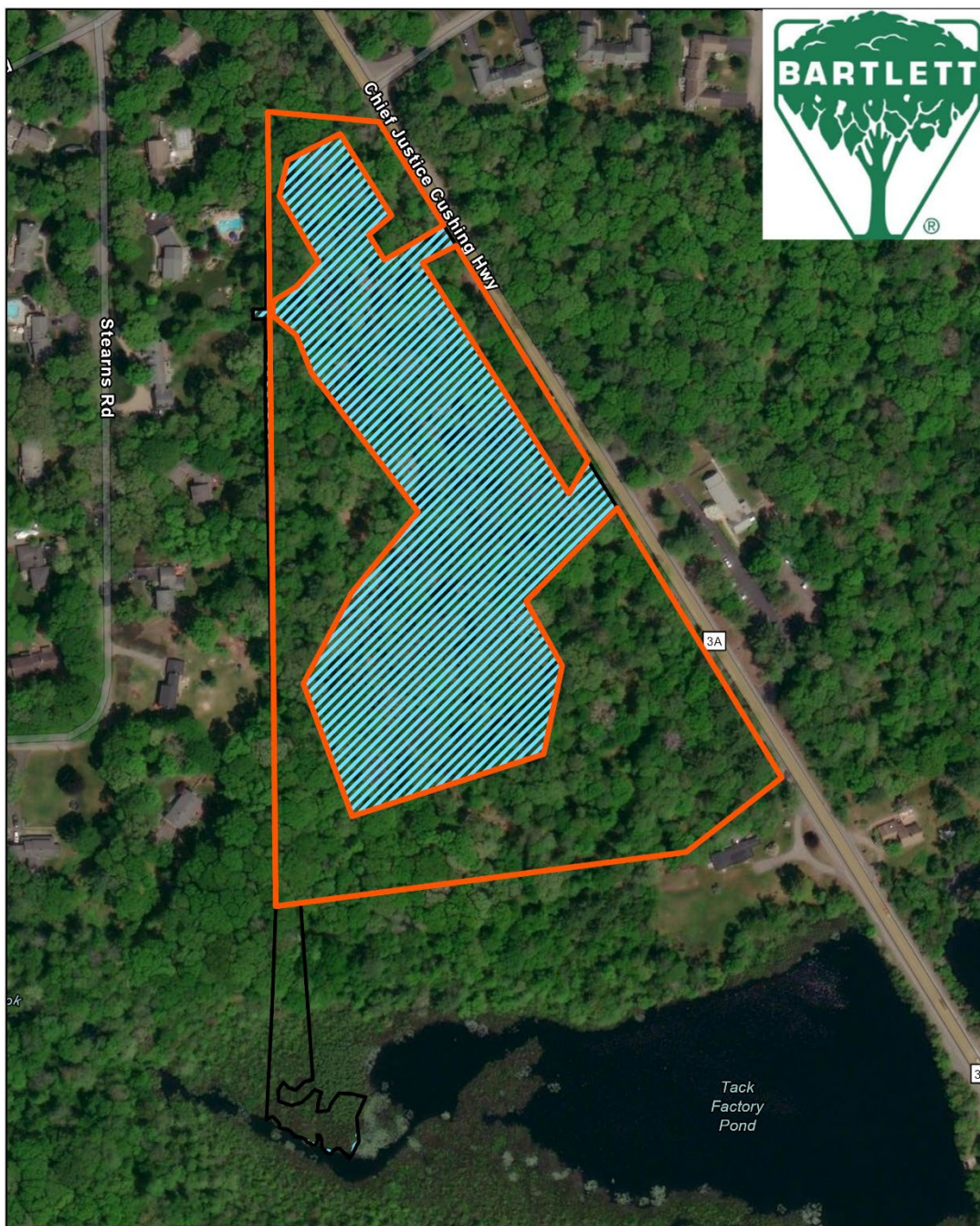
Stand Dynamics

Tree Species Identified

Our inventory revealed 12 species of trees, as detailed in the following table:

TREE SPECIES IDENTIFIED

Genus	Species	Common Name	Count	% Distribution Total
<i>Acer</i>	<i>rubrum</i>	Maple-Red	251	44%
<i>Betula</i>	<i>alleghaniensis</i>	Birch-Yellow	1	< 1%
	<i>lenta</i>	Birch-Sweet	2	< 1%
Betula Total			3	1%
<i>Carya</i>	<i>tomentosa</i>	Hickory-Mockernut	25	4%
<i>Fagus</i>	<i>grandifolia</i>	Beech-American	2	< 1%
<i>Fraxinus</i>	<i>americana</i>	Ash-White	12	2%
<i>Nyssa</i>	<i>sylvatica</i>	Tupelo-Black	68	12%
<i>Pinus</i>	<i>strobus</i>	Pine-Eastern White	58	10%
<i>Prunus</i>	<i>serotina</i>	Cherry-Black	4	1%
	<i>alba</i>	Oak-White	8	1%
<i>Quercus</i>	<i>rubra</i>	Oak-Northern Red	33	6%
	<i>velutina</i>	Oak-Black	109	19%
Quercus Total			150	26%
Grand Total			573	100%

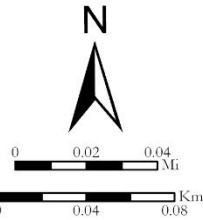


Town of Scituate

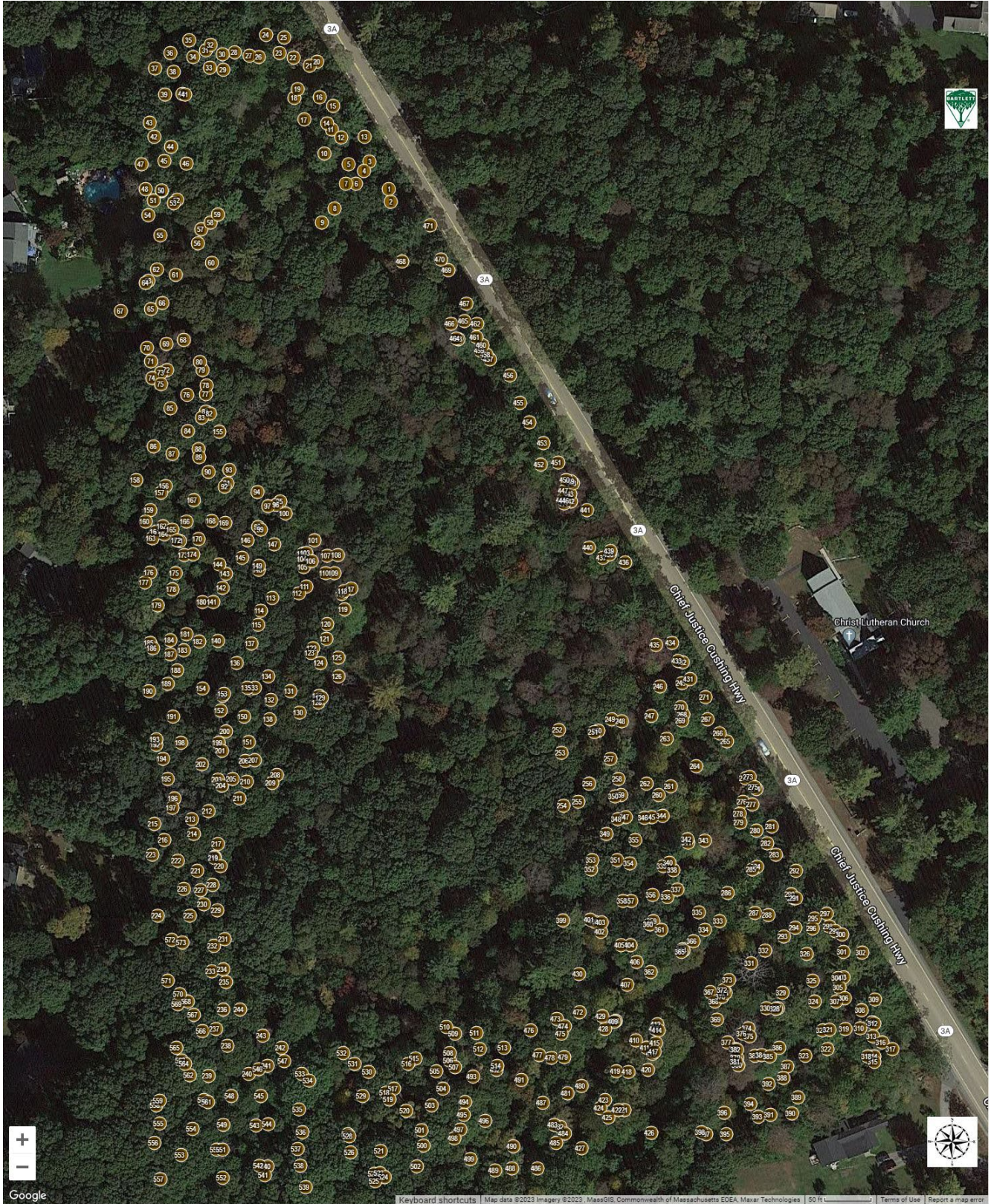
Esri Community Maps Contributors, MassGIS, © OpenStreetMap, Microsoft, Esri, HERE, Garmin, Swi-Graph, GeoTechnologies, Inc, METI/NASA, USGS, EPA, NPS, US Census Bureau, USDA, Maxar, Microsoft

2023

Coordinate System: NAD 1983 2011 StatePlane Massachusetts Mink FIPS 2001 FUS⁰



2023 TREE INVENTORY

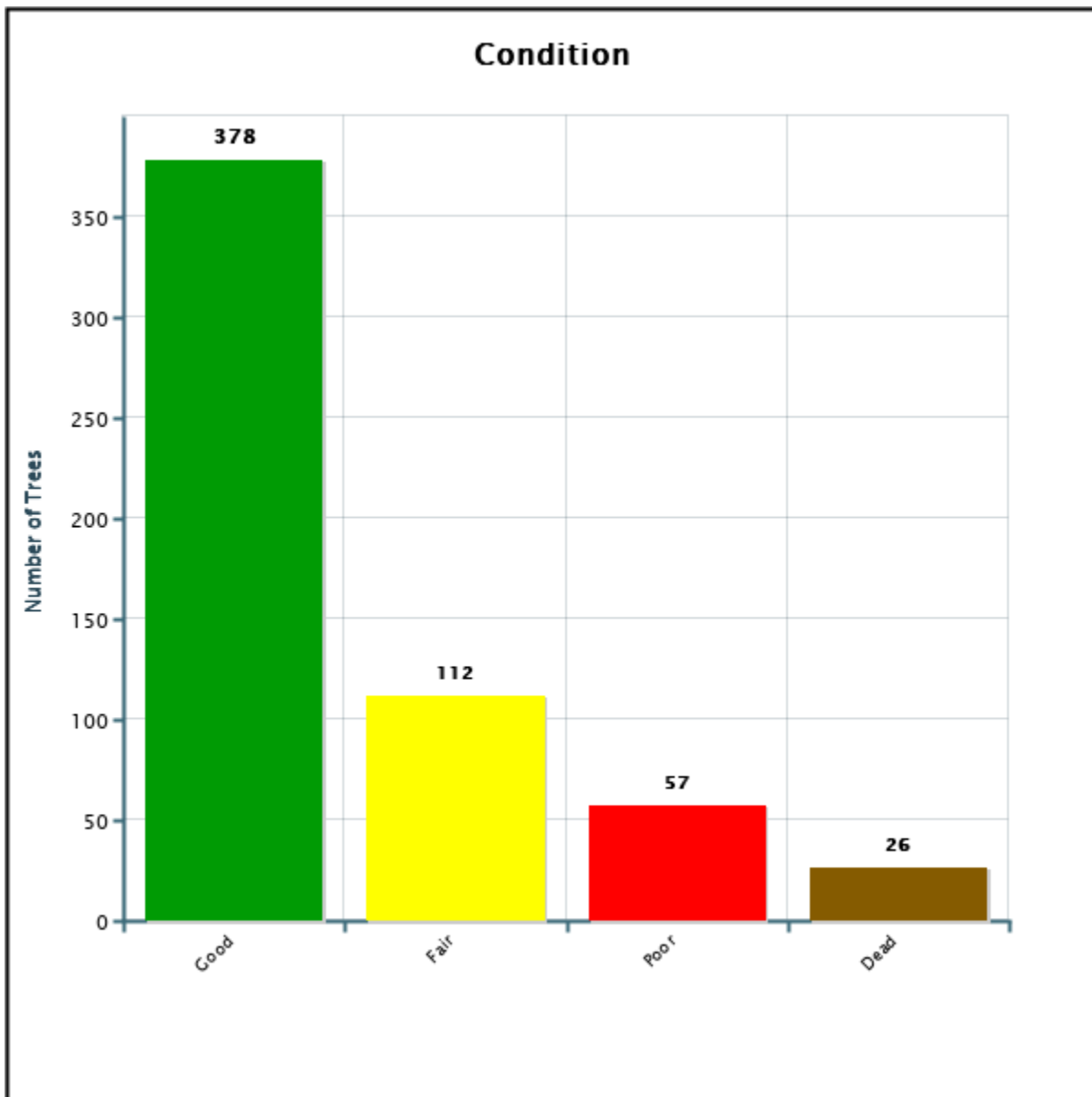


Condition Class

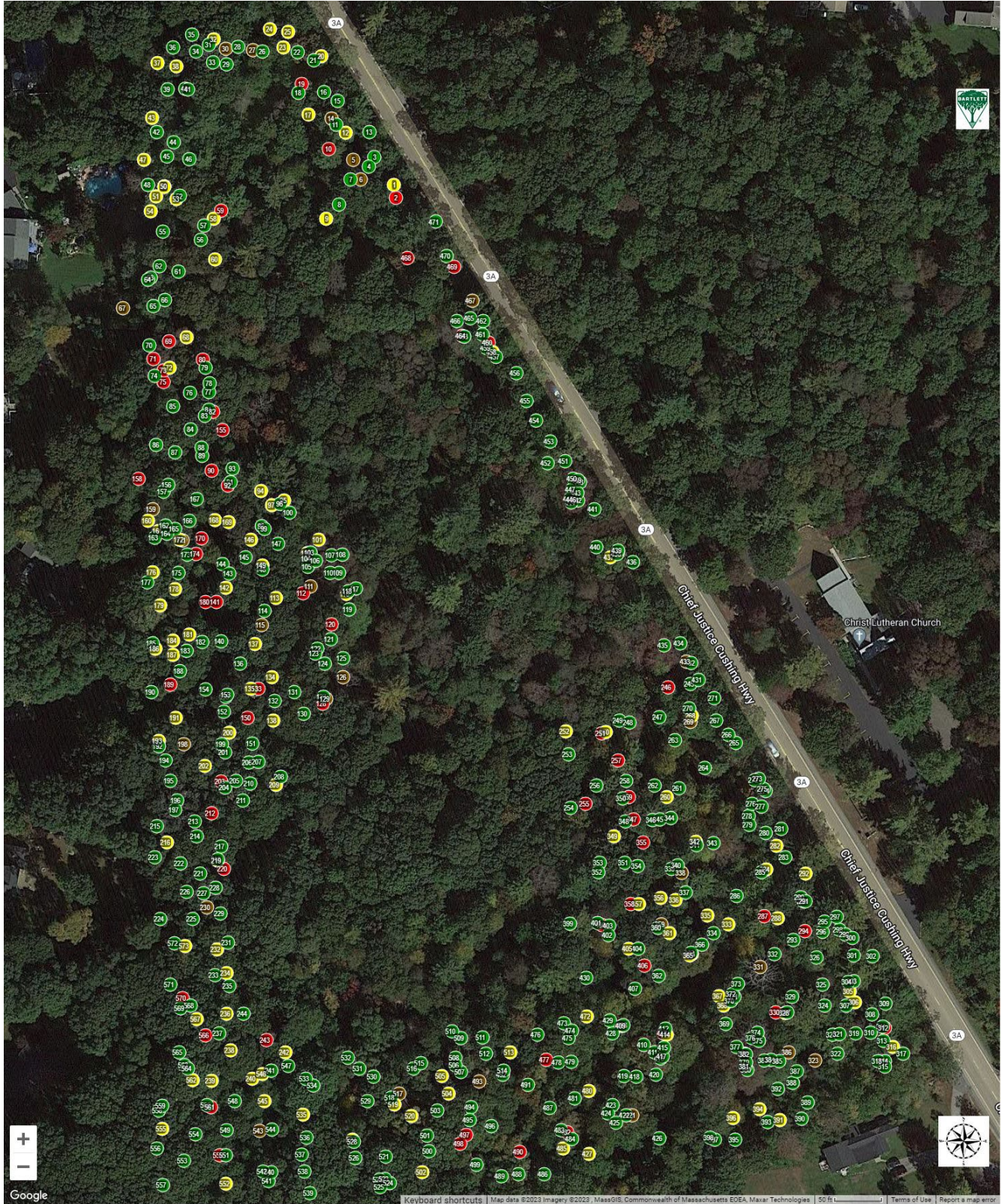
The breakdown of tree condition follows:

CONDITION CLASS BREAKDOWN

Condition Class	Quantity	% of Total
Good	378	66%
Fair	112	20%
Poor	57	10%
Dead	26	5%



INVENTORIED TREES BY CONDITION CLASS

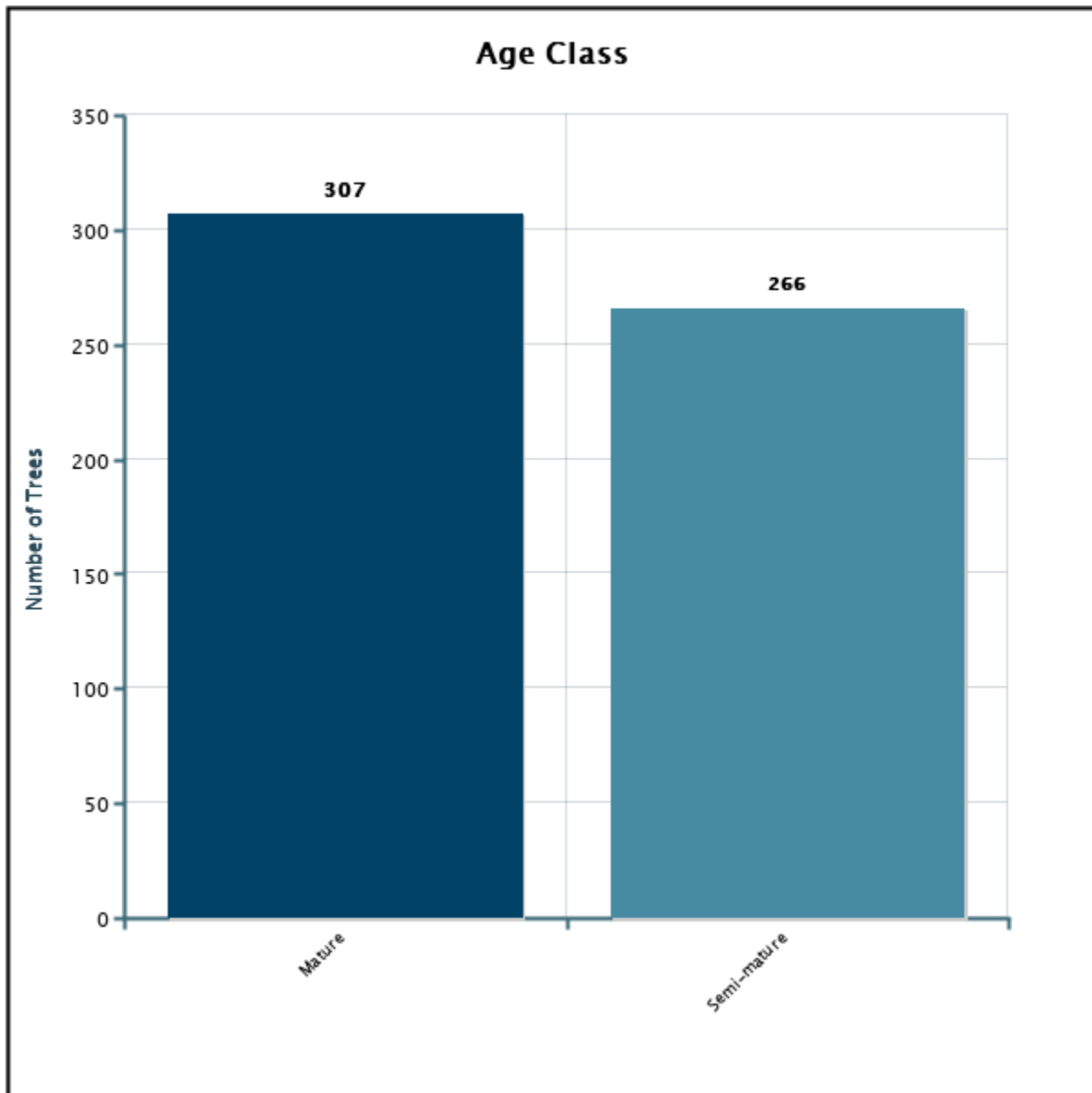


Age Class

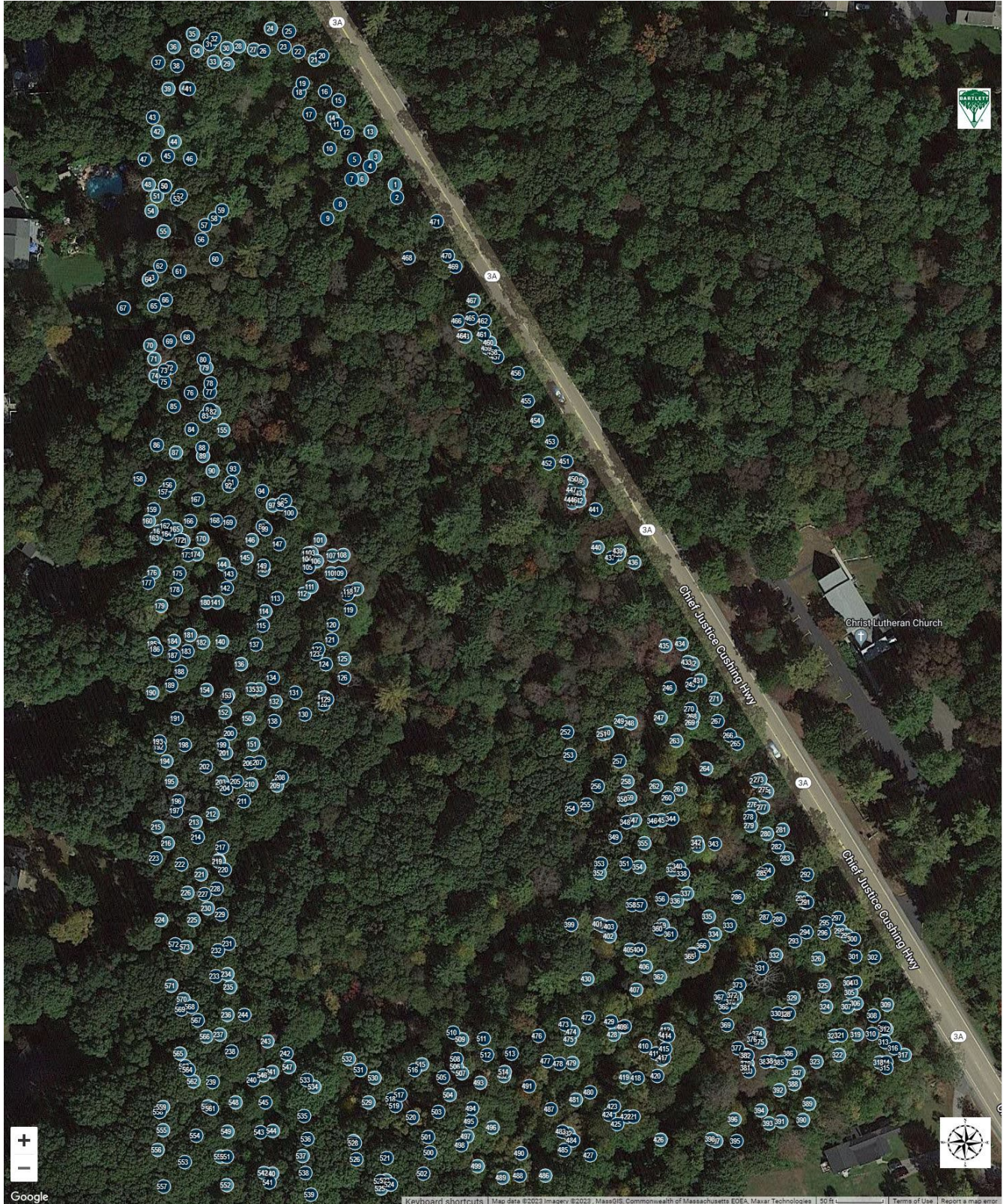
The breakdown of tree age class follows:

AGE CLASS BREAKDOWN

Age Class	Quantity	% of Total
Mature	307	54%
Semi-mature	266	46%

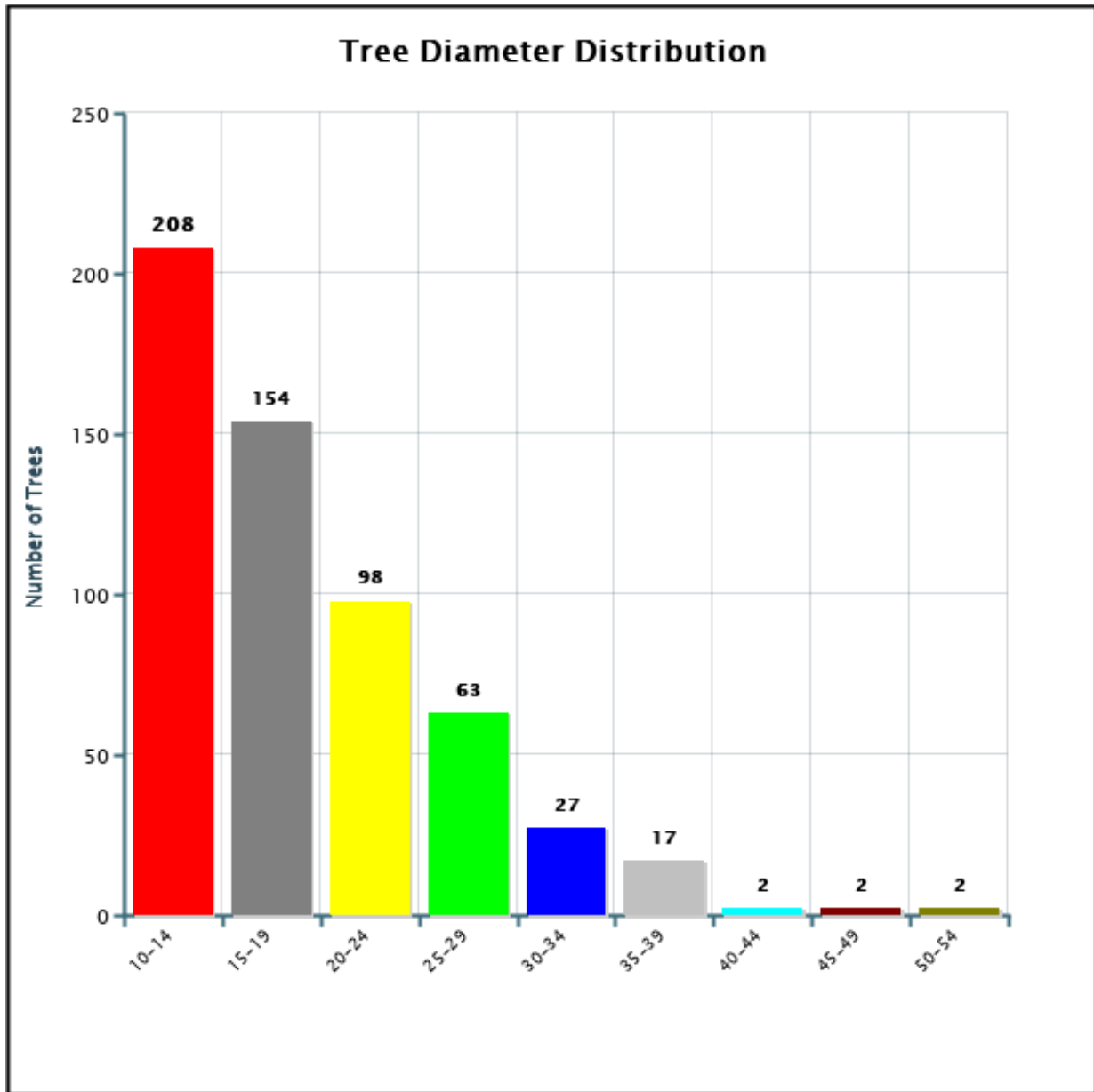


INVENTORIED TREES BY AGE CLASS



Tree Size (DBH)

The following chart illustrates numbers of trees according to size per DBH:



Plant Health Care

The Inventory Team also recommends Plant Health Care (PHC) programs for trees in the formal landscape. In addition, an Integrated Pest Management (IPM) program monitors for potentially damaging insects, diseases and cultural problems that are often seasonal and may not have been evident during our inventory visit. Plant Health Care treatments should be applied as soon as possible, therefore they do not have a Tree & Shrub Work phase. These pests and diseases include, but are not limited to, the following:

- Anthracnose - on a variety of species
- Aphids - on a variety of species
- Bagworms - on a variety of tree species
- Beech Leaf Disease - on beech trees
- Boring Insects - on a variety of tree species
- Caterpillar Defoliators - on a variety of tree species, especially oak
- Gall Insects - on a variety of species
- Lacebugs - on a variety of species
- Scab and Rust Fungi - on crabapple and apple species.
- Suspected Phytophthora Root Rot and Canker - on a variety of tree species, especially beech species
- Scale Insects - on a variety of tree species, especially oak

We identified pests or diseases on the following inventoried trees at the time of the inventory:

INVENTORIED TREES IDENTIFIED FOR PLANT HEALTH CARE (9 Trees)

Tree ID	Common Name	DBH	Pest(s) or Disease(s)
8	Oak-Black	21	• Vines
37	Tupelo-Black	17	• Poisonous plants • Vines
59	Pine-Eastern White	29	• Poisonous plants • Vines
72	Maple-Red	20	• Vines
155	Ash-White	17	• Emerald ash borer (suspected)
406	Maple-Red	15,13,12,8	• Borers
437	Maple-Red	19,18,18	• Borers • Cankers
519	Hickory-Mockernut	20	• Borers
530	Beech-American	13	• Beech leaf disease

DEFECTS OR OBSERVATIONS



DEFECTS OR OBSERVATIONS

The following table lists inventoried trees for which we noted defects, observations, or other structural issues and were not assigned an *overall tree risk rating*, recommended for a *Level 3 Advanced assessment*, or have pruning and/or removal recommendations that were previously reported.

**INVENTORIED TREES WITH DEFECTS, OBSERVATIONS, OR OTHER STRUCTURAL ISSUES
(422 Trees)**

Tree ID	Common Name	DBH	Defect(s) or Observation(s)
1	Oak-White	16	<ul style="list-style-type: none"> • Dead branches >2 • Uneven crown
2	Oak-Northern Red	36	<ul style="list-style-type: none"> • Dead branches >2 • Dead/dying stem • Storm damage
9	Oak-Northern Red	30	<ul style="list-style-type: none"> • Dead branches >2 • Decay-stem
10	Oak-Black	22	<ul style="list-style-type: none"> • Dead branches >2 • Decay-stem
12	Pine-Eastern White	33	<ul style="list-style-type: none"> • Co-dominant stems • Dead branches >2 • Included bark
13	Maple-Red	14	<ul style="list-style-type: none"> • Uneven crown
16	Tupelo-Black	18	<ul style="list-style-type: none"> • Co-dominant stems • Included bark
17	Oak-Black	20	<ul style="list-style-type: none"> • Decay-stem • Storm damage
19	Oak-Black	18	<ul style="list-style-type: none"> • Decay-stem • Fungi/conks • Storm damage
20	Oak-Northern Red	21	<ul style="list-style-type: none"> • Construction damage <ul style="list-style-type: none"> • Cut roots • Dead branches >2 • Uneven crown
22	Oak-White	23	<ul style="list-style-type: none"> • Dead branches >2
23	Maple-Red	16	<ul style="list-style-type: none"> • Co-dominant stems • Decay-stem
24	Pine-Eastern White	12	<ul style="list-style-type: none"> • Low vigor
25	Oak-Black	23	<ul style="list-style-type: none"> • Dead branches >2
29	Pine-Eastern White	18	<ul style="list-style-type: none"> • Sweep
32	Oak-Black	31	<ul style="list-style-type: none"> • Dead branches >2 • Uneven crown
35	Maple-Red	15	<ul style="list-style-type: none"> • Poor branch structure
37	Tupelo-Black	17	<ul style="list-style-type: none"> • Decay-root flare • Decay-stem
38	Oak-Black	24	<ul style="list-style-type: none"> • Dead branches >2 • Uneven crown
41	Oak-Black	36	<ul style="list-style-type: none"> • Dead branches >2 • Decay-stem
43	Oak-Black	27	<ul style="list-style-type: none"> • Dead branches >2 • Decay-stem • Rib

Tree ID	Common Name	DBH	Defect(s) or Observation(s)
45	Maple-Red	27	<ul style="list-style-type: none"> • Co-dominant stems • Poor branch structure
46	Maple-Red	28	<ul style="list-style-type: none"> • Co-dominant stems • Poor branch structure
47	Maple-Red	24	<ul style="list-style-type: none"> • Decay-stem • Uneven crown
48	Tupelo-Black	15	<ul style="list-style-type: none"> • Growing against object
49	Oak-Black	27	<ul style="list-style-type: none"> • Dead branches >2
50	Pine-Eastern White	18	<ul style="list-style-type: none"> • Co-dominant stems • Decay-stem • Included bark • Low vigor
51	Maple-Red	14	<ul style="list-style-type: none"> • Growing against object • Uneven crown
52	Oak-Black	21	<ul style="list-style-type: none"> • Dead branches >2
53	Oak-Black	24	<ul style="list-style-type: none"> • Dead branches >2
54	Maple-Red	15	<ul style="list-style-type: none"> • Decay-stem • Rib
57	Tupelo-Black	24	<ul style="list-style-type: none"> • Co-dominant stems • Included bark
58	Maple-Red	18	<ul style="list-style-type: none"> • Construction damage • Poor branch structure
59	Pine-Eastern White	29	<ul style="list-style-type: none"> • Construction damage • Cut roots
60	Maple-Red	38	<ul style="list-style-type: none"> • Co-dominant stems • Decay-stem • Included bark • Poor branch structure
63	Maple-Red	20	<ul style="list-style-type: none"> • Co-dominant stems • Uneven crown
65	Maple-Red	24,9	<ul style="list-style-type: none"> • Co-dominant stems • Included bark • Poor branch structure
66	Oak-Black	29	<ul style="list-style-type: none"> • Dead branches >2
68	Maple-Red	20	<ul style="list-style-type: none"> • Co-dominant stems • Decay-stem • Included bark • Poor branch structure
69	Tupelo-Black	19	<ul style="list-style-type: none"> • Decay-root flare • Decay-stem
71	Maple-Red	15	<ul style="list-style-type: none"> • Fungi/conks • Storm damage
72	Maple-Red	20	<ul style="list-style-type: none"> • Co-dominant stems
73	Tupelo-Black	27	<ul style="list-style-type: none"> • Decay-root flare • Decay-stem • Low vigor

Tree ID	Common Name	DBH	Defect(s) or Observation(s)
75	Maple-Red	16	<ul style="list-style-type: none"> • Crack-stem • Decay-root flare • Uneven crown
76	Maple-Red	27	<ul style="list-style-type: none"> • Co-dominant stems • Girdling roots present <ul style="list-style-type: none"> • Included bark
78	Oak-Black	19	<ul style="list-style-type: none"> • Uneven crown
80	Maple-Red	35	<ul style="list-style-type: none"> • Co-dominant stems <ul style="list-style-type: none"> • Decay-stem • Included bark • Poor branch structure
82	Maple-Red	14	<ul style="list-style-type: none"> • Dead/dying stem • Decay-root flare • Uneven crown
86	Oak-Black	34	<ul style="list-style-type: none"> • Co-dominant stems
90	Maple-Red	13	<ul style="list-style-type: none"> • Decay-root flare • Decay-stem <ul style="list-style-type: none"> • Sweep
92	Maple-Red	17	<ul style="list-style-type: none"> • Decay-root flare • Uneven crown
94	Pine-Eastern White	41	<ul style="list-style-type: none"> • Dead branches >2
95	Maple-Red	23	<ul style="list-style-type: none"> • Hanger • Storm damage • Uneven crown
96	Hickory-Mockernut	17,7	<ul style="list-style-type: none"> • Co-dominant stems • Included bark
99	Maple-Red	26	<ul style="list-style-type: none"> • Co-dominant stems
100	Maple-Red	36	<ul style="list-style-type: none"> • Co-dominant stems <ul style="list-style-type: none"> • Included bark • Poor branch structure
101	Cherry-Black	16	<ul style="list-style-type: none"> • Dead branches >2 <ul style="list-style-type: none"> • Low vigor
105	Tupelo-Black	17	<ul style="list-style-type: none"> • Co-dominant stems <ul style="list-style-type: none"> • Included bark • Uneven crown
108	Tupelo-Black	15,13	<ul style="list-style-type: none"> • Co-dominant stems
110	Tupelo-Black	13,9,7	<ul style="list-style-type: none"> • Co-dominant stems
112	Maple-Red	15,14	<ul style="list-style-type: none"> • Co-dominant stems • Dead branches >2 <ul style="list-style-type: none"> • Decay-stem • Storm damage
113	Oak-Black	32	<ul style="list-style-type: none"> • Dead branches >2 • Decay-root flare <ul style="list-style-type: none"> • Low vigor

Tree ID	Common Name	DBH	Defect(s) or Observation(s)
116	Tupelo-Black	33	<ul style="list-style-type: none"> • Co-dominant stems <ul style="list-style-type: none"> • Decay-stem • Included bark • Poor branch structure
117	Tupelo-Black	13	<ul style="list-style-type: none"> • Uneven crown
119	Maple-Red	24,13	<ul style="list-style-type: none"> • Co-dominant stems • Included bark
120	Oak-Black	36	<ul style="list-style-type: none"> • Co-dominant stems • Dead/dying stem <ul style="list-style-type: none"> • Included bark • Storm damage
123	Oak-Black	28	<ul style="list-style-type: none"> • Co-dominant stems • Dead branches >2
124	Maple-Red	20,18	<ul style="list-style-type: none"> • Co-dominant stems <ul style="list-style-type: none"> • Included bark • Poor branch structure
125	Tupelo-Black	13,11	<ul style="list-style-type: none"> • Co-dominant stems • Uneven crown
127	Maple-Red	12,5,5	<ul style="list-style-type: none"> • Co-dominant stems <ul style="list-style-type: none"> • Included bark • Poor branch structure
128	Oak-Black	20,19	<ul style="list-style-type: none"> • Co-dominant stems • Dead branches >2 • Decay-root flare • Storm damage
131	Maple-Red	22,16,15	<ul style="list-style-type: none"> • Co-dominant stems <ul style="list-style-type: none"> • Included bark • Overextended branch • Poor branch structure
133	Maple-Red	15	<ul style="list-style-type: none"> • Decay-stem • Growing against object <ul style="list-style-type: none"> • Sweep
134	Maple-Red	24,16,16	<ul style="list-style-type: none"> • Co-dominant stems <ul style="list-style-type: none"> • Included bark • Poor branch structure
135	Oak-Black	16	<ul style="list-style-type: none"> • Dead branches >2
137	Oak-Black	31	<ul style="list-style-type: none"> • Dead branches >2 <ul style="list-style-type: none"> • Rib
138	Maple-Red	20,19,18	<ul style="list-style-type: none"> • Co-dominant stems <ul style="list-style-type: none"> • Decay-stem • Included bark • Poor branch structure
141	Maple-Red	12,9	<ul style="list-style-type: none"> • Dead/dying stem <ul style="list-style-type: none"> • Decay-stem • Uneven crown

Tree ID	Common Name	DBH	Defect(s) or Observation(s)
142	Oak-Black	28	<ul style="list-style-type: none"> • Dead branches >2 • Low vigor
146	Maple-Red	15	<ul style="list-style-type: none"> • Decay-stem • Poor branch structure • Uneven crown
147	Oak-Black	27	<ul style="list-style-type: none"> • Dead branches >2
149	Maple-Red	19	<ul style="list-style-type: none"> • Co-dominant stems • Decay-stem • Storm damage
150	Maple-Red	13,9,8	<ul style="list-style-type: none"> • Co-dominant stems • Decay-root flare • Storm damage
152	Oak-Black	17	<ul style="list-style-type: none"> • Rib
153	Oak-Black	14	<ul style="list-style-type: none"> • Uneven crown
155	Ash-White	17	<ul style="list-style-type: none"> • Dead branches >2 • Decay-stem • Low vigor
156	Maple-Red	17	<ul style="list-style-type: none"> • Poor branch structure
157	Oak-Northern Red	22	<ul style="list-style-type: none"> • Dead branches >2
158	Maple-Red	18,10	<ul style="list-style-type: none"> • Decay-root flare • Decay-stem • Poor branch structure
160	Maple-Red	14	<ul style="list-style-type: none"> • Decay-stem • Fungi/conks • Poor branch structure
161	Maple-Red	14	<ul style="list-style-type: none"> • Decay-stem • Sweep
162	Maple-Red	23	<ul style="list-style-type: none"> • Sweep
163	Maple-Red	12	<ul style="list-style-type: none"> • Poor branch structure • Uneven crown
164	Maple-Red	20	<ul style="list-style-type: none"> • Co-dominant stems
165	Maple-Red	15	<ul style="list-style-type: none"> • Sweep
167	Maple-Red	22	<ul style="list-style-type: none"> • Co-dominant stems • Included bark
168	Maple-Red	16	<ul style="list-style-type: none"> • Decay-root flare • Poor branch structure
169	Ash-White	26	<ul style="list-style-type: none"> • Co-dominant stems
170	Maple-Red	12	<ul style="list-style-type: none"> • Co-dominant stems • Dead/dying stem • Decay-root flare
172	Maple-Red	19	<ul style="list-style-type: none"> • Dead branches >2 • Low vigor

Tree ID	Common Name	DBH	Defect(s) or Observation(s)
174	Maple-Red	15,14	<ul style="list-style-type: none"> • Co-dominant stems <ul style="list-style-type: none"> • Decay-stem • Fungi/conks • Included bark • Poor branch structure
176	Pine-Eastern White	12	<ul style="list-style-type: none"> • Dead branches >2 <ul style="list-style-type: none"> • Low vigor
177	Oak-Black	28,24	<ul style="list-style-type: none"> • Co-dominant stems <ul style="list-style-type: none"> • Included bark
178	Maple-Red	18	<ul style="list-style-type: none"> • Decay-stem
179	Maple-Red	13	<ul style="list-style-type: none"> • Decay-root flare • Decay-stem
180	Maple-Red	13	<ul style="list-style-type: none"> • Crack-stem <ul style="list-style-type: none"> • Lean • Storm damage
181	Maple-Red	14	<ul style="list-style-type: none"> • Decay-root flare
184	Maple-Red	14	<ul style="list-style-type: none"> • Decay-root flare
186	Maple-Red	17	<ul style="list-style-type: none"> • Decay-root flare • Uneven crown
187	Oak-Black	19	<ul style="list-style-type: none"> • Low vigor • Wound-stem
188	Oak-Black	27	<ul style="list-style-type: none"> • Dead branches >2
189	Maple-Red	19	<ul style="list-style-type: none"> • Co-dominant stems <ul style="list-style-type: none"> • Decay-stem • Included bark
191	Oak-Black	21	<ul style="list-style-type: none"> • Dead branches >2 <ul style="list-style-type: none"> • Low vigor
192	Oak-Northern Red	29	<ul style="list-style-type: none"> • Dead branches >2
193	Hickory-Mockernut	24	<ul style="list-style-type: none"> • Girdling material • Uneven crown
198	Oak-Black	18	<ul style="list-style-type: none"> • Storm damage
199	Pine-Eastern White	34	<ul style="list-style-type: none"> • Dead branches >2
200	Oak-Black	24	<ul style="list-style-type: none"> • Decay-stem • Low vigor
201	Oak-Black	13	<ul style="list-style-type: none"> • Uneven crown
202	Oak-Black	31	<ul style="list-style-type: none"> • Dead branches >2 <ul style="list-style-type: none"> • Hanger
203	Maple-Red	14,9	<ul style="list-style-type: none"> • Co-dominant stems <ul style="list-style-type: none"> • Decay-root flare • Growing against object <ul style="list-style-type: none"> • Included bark
205	Oak-Black	27	<ul style="list-style-type: none"> • Co-dominant stems
206	Oak-Black	25	<ul style="list-style-type: none"> • Dead branches >2 <ul style="list-style-type: none"> • Uneven crown

Tree ID	Common Name	DBH	Defect(s) or Observation(s)
207	Oak-Black	20	<ul style="list-style-type: none"> • Co-dominant stems • Uneven crown
208	Oak-Black	26	<ul style="list-style-type: none"> • Rib
209	Maple-Red	12	<ul style="list-style-type: none"> • Decay-stem • Low vigor
210	Maple-Red	13	<ul style="list-style-type: none"> • Dead branches >2 • Hanger
212	Hickory-Mockernut	13	<ul style="list-style-type: none"> • Decay-stem • Seam
213	Oak-Black	13	<ul style="list-style-type: none"> • Poor branch structure
214	Oak-Black	27,26	<ul style="list-style-type: none"> • Co-dominant stems • Dead branches >2
216	Maple-Red	14	<ul style="list-style-type: none"> • Decay-stem • Wound-stem
219	Oak-Black	14	<ul style="list-style-type: none"> • Decay-stem • Uneven crown
220	Oak-Black	20	<ul style="list-style-type: none"> • Decay-stem • Low vigor
222	Oak-Black	26,20	<ul style="list-style-type: none"> • Co-dominant stems
225	Oak-Black	16,15	<ul style="list-style-type: none"> • Co-dominant stems • Dead branches >2
227	Oak-Black	30	<ul style="list-style-type: none"> • Dead branches >2
228	Oak-Black	20	<ul style="list-style-type: none"> • Uneven crown
229	Hickory-Mockernut	19	<ul style="list-style-type: none"> • Co-dominant stems
231	Oak-Black	23	<ul style="list-style-type: none"> • Dead branches >2
232	Oak-Black	27	<ul style="list-style-type: none"> • Dead branches >2 • Low vigor
235	Maple-Red	15	<ul style="list-style-type: none"> • Uneven crown
236	Maple-Red	13,12	<ul style="list-style-type: none"> • Co-dominant stems • Decay-stem • Included bark
238	Oak-Black	29	<ul style="list-style-type: none"> • Dead branches >2
239	Maple-Red	16,7	<ul style="list-style-type: none"> • Co-dominant stems • Decay-stem
240	Maple-Red	16	<ul style="list-style-type: none"> • Growing against object
242	Maple-Red	23,16	<ul style="list-style-type: none"> • Co-dominant stems • Decay-root flare • Included bark
243	Tupelo-Black	14,9	<ul style="list-style-type: none"> • Co-dominant stems • Decay-stem • Low vigor
244	Oak-Black	23	<ul style="list-style-type: none"> • Dead branches >2
245	Maple-Red	17	<ul style="list-style-type: none"> • Co-dominant stems • Poor branch structure • Wound-stem

Tree ID	Common Name	DBH	Defect(s) or Observation(s)
246	Maple-Red	16	<ul style="list-style-type: none"> • Co-dominant stems • Decay-stem • Uneven crown
247	Maple-Red	15,14	<ul style="list-style-type: none"> • Co-dominant stems • Uneven crown
248	Tupelo-Black	14	<ul style="list-style-type: none"> • Uneven crown
249	Tupelo-Black	12,9	<ul style="list-style-type: none"> • Co-dominant stems
250	Maple-Red	12	<ul style="list-style-type: none"> • Wound-stem
251	Ash-White	14,14	<ul style="list-style-type: none"> • Co-dominant stems • Decay-stem
252	Maple-Red	18,16,12,12	<ul style="list-style-type: none"> • Co-dominant stems • Included bark
253	Maple-Red	17,15	<ul style="list-style-type: none"> • Co-dominant stems • Decay-stem • Included bark
254	Maple-Red	17,16	<ul style="list-style-type: none"> • Buried root collar • Co-dominant stems
255	Maple-Red	16,16	<ul style="list-style-type: none"> • Co-dominant stems • Decay-stem
256	Pine-Eastern White	26	<ul style="list-style-type: none"> • Co-dominant stems • Included bark
257	Pine-Eastern White	31	<ul style="list-style-type: none"> • Co-dominant stems • Dead branches >2 • Included bark • Storm damage
258	Ash-White	12,11,8	<ul style="list-style-type: none"> • Co-dominant stems
259	Ash-White	12	<ul style="list-style-type: none"> • Co-dominant stems • Decay-stem
260	Maple-Red	17	<ul style="list-style-type: none"> • Dead branches >2 • Decay-stem
265	Oak-Black	26	<ul style="list-style-type: none"> • Dead branches >2 • Poor branch structure
266	Oak-Black	20	<ul style="list-style-type: none"> • Uneven crown
267	Oak-Black	22	<ul style="list-style-type: none"> • Dead branches >2
268	Oak-Black	13	<ul style="list-style-type: none"> • Co-dominant stems • Decay-stem
270	Maple-Red	17	<ul style="list-style-type: none"> • Co-dominant stems • Included bark
271	Maple-Red	14	<ul style="list-style-type: none"> • Co-dominant stems • Uneven crown
274	Oak-Black	17	<ul style="list-style-type: none"> • Dead branches >2 • Uneven crown
275	Tupelo-Black	12,9	<ul style="list-style-type: none"> • Buried root collar • Co-dominant stems
276	Maple-Red	12,10	<ul style="list-style-type: none"> • Co-dominant stems

Tree ID	Common Name	DBH	Defect(s) or Observation(s)
278	Maple-Red	16,14,10,8	<ul style="list-style-type: none"> • Co-dominant stems • Included bark
279	Pine-Eastern White	13	<ul style="list-style-type: none"> • Co-dominant stems • Dead branches <=2
280	Pine-Eastern White	15	<ul style="list-style-type: none"> • Dead branches <=2
281	Maple-Red	15,10,7	<ul style="list-style-type: none"> • Co-dominant stems • Included bark
282	Oak-Black	25,18	<ul style="list-style-type: none"> • Co-dominant stems • Dead branches >2 • Poor branch structure
284	Maple-Red	18	<ul style="list-style-type: none"> • Co-dominant stems • Included bark
287	Pine-Eastern White	38	<ul style="list-style-type: none"> • Storm damage • Uneven crown
288	Maple-Red	16,5	<ul style="list-style-type: none"> • Co-dominant stems • Decay-stem
289	Pine-Eastern White	12	<ul style="list-style-type: none"> • Uneven crown
290	Pine-Eastern White	12	<ul style="list-style-type: none"> • Uneven crown
291	Oak-Black	27,24	<ul style="list-style-type: none"> • Co-dominant stems • Dead branches >2 • Included bark
292	Pine-Eastern White	36	<ul style="list-style-type: none"> • Dead branches >2 • Decay-stem
293	Oak-Black	18	<ul style="list-style-type: none"> • Dead branches >2
294	Maple-Red	25	<ul style="list-style-type: none"> • Decay-stem • Uneven crown
295	Pine-Eastern White	25	<ul style="list-style-type: none"> • Dead branches >2
296	Pine-Eastern White	36	<ul style="list-style-type: none"> • Dead branches >2
297	Pine-Eastern White	34	<ul style="list-style-type: none"> • Dead branches >2 • Uneven crown
298	Maple-Red	14	<ul style="list-style-type: none"> • Included bark • Uneven crown
299	Maple-Red	12	<ul style="list-style-type: none"> • Uneven crown
300	Oak-Black	24	<ul style="list-style-type: none"> • Dead branches >2 • Uneven crown
301	Pine-Eastern White	25	<ul style="list-style-type: none"> • Dead branches >2
302	Maple-Red	17	<ul style="list-style-type: none"> • Co-dominant stems
303	Pine-Eastern White	35	<ul style="list-style-type: none"> • Dead branches >2
304	Maple-Red	12	<ul style="list-style-type: none"> • Uneven crown
305	Maple-Red	12	<ul style="list-style-type: none"> • Decay-stem
306	Pine-Eastern White	12	<ul style="list-style-type: none"> • Dead branches <=2
307	Pine-Eastern White	14	<ul style="list-style-type: none"> • Dead branches <=2
308	Pine-Eastern White	35	<ul style="list-style-type: none"> • Dead branches >2
309	Maple-Red	14	<ul style="list-style-type: none"> • Uneven crown
310	Pine-Eastern White	25	<ul style="list-style-type: none"> • Dead branches >2

Tree ID	Common Name	DBH	Defect(s) or Observation(s)
311	Maple-Red	22,20	<ul style="list-style-type: none"> • Co-dominant stems • Dead branches <=2
312	Maple-Red	14	<ul style="list-style-type: none"> • Decay-stem • Storm damage
313	Maple-Red	17	<ul style="list-style-type: none"> • Dead branches <=2
314	Maple-Red	17	<ul style="list-style-type: none"> • Co-dominant stems
315	Maple-Red	16	<ul style="list-style-type: none"> • Uneven crown
316	Maple-Red	16,10,9,6	<ul style="list-style-type: none"> • Co-dominant stems • Poor branch structure
317	Maple-Red	12	<ul style="list-style-type: none"> • Uneven crown
319	Pine-Eastern White	14	<ul style="list-style-type: none"> • Dead branches <=2
321	Maple-Red	33	<ul style="list-style-type: none"> • Co-dominant stems • Dead branches >2
322	Maple-Red	12,11,10,9	<ul style="list-style-type: none"> • Co-dominant stems • Dead branches <=2 • Included bark
324	Maple-Red	15,13,10,9	<ul style="list-style-type: none"> • Co-dominant stems • Dead branches <=2
325	Tupelo-Black	13,6,4	<ul style="list-style-type: none"> • Co-dominant stems
326	Maple-Red	12,12	<ul style="list-style-type: none"> • Co-dominant stems • Decay-stem
327	Pine-Eastern White	38	<ul style="list-style-type: none"> • Co-dominant stems • Dead branches >2
328	Maple-Red	13	<ul style="list-style-type: none"> • Dead branches <=2 • Uneven crown
329	Maple-Red	14	<ul style="list-style-type: none"> • Wound-stem
330	Maple-Red	34	<ul style="list-style-type: none"> • Co-dominant stems • Dead branches >2 • Decay-stem
332	Tupelo-Black	15	<ul style="list-style-type: none"> • Buried root collar • Uneven crown
333	Maple-Red	22,10,10	<ul style="list-style-type: none"> • Co-dominant stems
335	Cherry-Black	12,8	<ul style="list-style-type: none"> • Co-dominant stems • Dead branches >2
336	Maple-Red	13,10	<ul style="list-style-type: none"> • Co-dominant stems • Dead branches >2
337	Pine-Eastern White	14	<ul style="list-style-type: none"> • Dead branches <=2
339	Pine-Eastern White	12	<ul style="list-style-type: none"> • Dead branches >2
341	Pine-Eastern White	12	<ul style="list-style-type: none"> • Co-dominant stems • Dead branches <=2
342	Ash-White	12,10,8,7	<ul style="list-style-type: none"> • Co-dominant stems • Decay-stem
343	Tupelo-Black	26	<ul style="list-style-type: none"> • Co-dominant stems
344	Maple-Red	24	<ul style="list-style-type: none"> • Co-dominant stems • Uneven crown

Tree ID	Common Name	DBH	Defect(s) or Observation(s)
345	Maple-Red	15,10	<ul style="list-style-type: none"> • Co-dominant stems • Dead branches >2
346	Pine-Eastern White	22	<ul style="list-style-type: none"> • Dead branches >2
347	Ash-White	14	<ul style="list-style-type: none"> • Co-dominant stems • Decay-stem
348	Maple-Red	22,10	<ul style="list-style-type: none"> • Co-dominant stems • Uneven crown
349	Maple-Red	20	<ul style="list-style-type: none"> • Dead branches <=2 • Decay-stem • Uneven crown
350	Maple-Red	12,11,11	<ul style="list-style-type: none"> • Co-dominant stems
351	Oak-Black	35	<ul style="list-style-type: none"> • Co-dominant stems • Dead branches >2 • Decay-stem
352	Oak-Black	13	<ul style="list-style-type: none"> • Uneven crown
353	Oak-Black	29	<ul style="list-style-type: none"> • Co-dominant stems • Dead branches >2
354	Maple-Red	15,12,13	<ul style="list-style-type: none"> • Co-dominant stems • Poor branch structure
355	Ash-White	14	<ul style="list-style-type: none"> • Decay-stem • Uneven crown
356	Maple-Red	16	<ul style="list-style-type: none"> • Co-dominant stems • Uneven crown
357	Maple-Red	23	<ul style="list-style-type: none"> • Buried root collar • Decay-stem • Uneven crown
358	Maple-Red	26	<ul style="list-style-type: none"> • Co-dominant stems • Decay-stem • Poor branch structure
360	Oak-White	29	<ul style="list-style-type: none"> • Dead branches >2
361	Maple-Red	16	<ul style="list-style-type: none"> • Decay-stem
363	Maple-Red	13,12,8	<ul style="list-style-type: none"> • Co-dominant stems • Dead branches <=2
364	Maple-Red	27	<ul style="list-style-type: none"> • Co-dominant stems • Dead branches >2
365	Maple-Red	12,11,9,9	<ul style="list-style-type: none"> • Co-dominant stems • Decay-stem
366	Maple-Red	16,12	<ul style="list-style-type: none"> • Co-dominant stems
367	Maple-Red	23	<ul style="list-style-type: none"> • Co-dominant stems • Poor branch structure
368	Maple-Red	18	<ul style="list-style-type: none"> • Decay-stem
369	Maple-Red	17	<ul style="list-style-type: none"> • Dead branches <=2 • Uneven crown
373	Maple-Red	18	<ul style="list-style-type: none"> • Co-dominant stems • Dead branches <=2

Tree ID	Common Name	DBH	Defect(s) or Observation(s)
374	Pine-Eastern White	14	• Dead branches <=2
375	Oak-Black	15	• Dead branches <=2
376	Tupelo-Black	20	• Co-dominant stems • Dead branches >2
377	Tupelo-Black	21	• Dead branches >2
379	Tupelo-Black	12	• Uneven crown
380	Tupelo-Black	20	• Uneven crown
382	Tupelo-Black	18	• Poor branch structure
383	Maple-Red	18	• Co-dominant stems • Poor branch structure
384	Maple-Red	12	• Uneven crown
387	Maple-Red	12	• Wound-stem
389	Maple-Red	14,8	• Co-dominant stems
390	Maple-Red	14,14	• Co-dominant stems
391	Maple-Red	12	• Decay-stem
392	Maple-Red	14	• Co-dominant stems
394	Maple-Red	14	• Co-dominant stems • Uneven crown
395	Maple-Red	16	• Co-dominant stems • Dead branches <=2
396	Maple-Red	14	• Decay-stem
398	Tupelo-Black	12	• Uneven crown
399	Pine-Eastern White	31	• Co-dominant stems • Dead branches >2
400	Maple-Red	13	• Decay-stem • Uneven crown
401	Tupelo-Black	14,9	• Co-dominant stems
402	Pine-Eastern White	14	• Dead branches <=2
403	Maple-Red	18	• Poor branch structure
404	Maple-Red	17	• Wound-stem
405	Maple-Red	12,10	• Co-dominant stems • Dead branches >2
406	Maple-Red	15,13,12,8	• Co-dominant stems • Decay-stem
408	Maple-Red	20	• Co-dominant stems
409	Maple-Red	16	• Dead branches >2
410	Maple-Red	17	• Dead branches <=2
411	Maple-Red	17,14	• Co-dominant stems • Dead branches <=2 • Included bark
412	Maple-Red	12	• Buried root collar • Uneven crown
413	Maple-Red	12	• Buried root collar • Decay-stem

Tree ID	Common Name	DBH	Defect(s) or Observation(s)
414	Maple-Red	22	<ul style="list-style-type: none"> • Dead branches >2 • Poor branch structure
415	Maple-Red	18	<ul style="list-style-type: none"> • Dead branches >2 • Uneven crown
416	Pine-Eastern White	12	<ul style="list-style-type: none"> • Dead branches >2
417	Maple-Red	24	<ul style="list-style-type: none"> • Co-dominant stems • Wound-stem
418	Maple-Red	20	<ul style="list-style-type: none"> • Dead branches <=2
419	Maple-Red	13,11	<ul style="list-style-type: none"> • Co-dominant stems • Dead branches <=2
420	Maple-Red	22,13	<ul style="list-style-type: none"> • Co-dominant stems • Poor branch structure
422	Maple-Red	26,24	<ul style="list-style-type: none"> • Co-dominant stems • Dead branches >2
423	Maple-Red	24	<ul style="list-style-type: none"> • Co-dominant stems • Dead branches <=2
424	Maple-Red	17,16,12	<ul style="list-style-type: none"> • Co-dominant stems
425	Maple-Red	21,20,14,8	<ul style="list-style-type: none"> • Co-dominant stems • Included bark
427	Maple-Red	19,12,11,6	<ul style="list-style-type: none"> • Buried root collar • Co-dominant stems • Decay-stem
428	Maple-Red	15	<ul style="list-style-type: none"> • Co-dominant stems • Poor branch structure
429	Maple-Red	26	<ul style="list-style-type: none"> • Co-dominant stems
430	Maple-Red	12,10,1,8,8	<ul style="list-style-type: none"> • Co-dominant stems
431	Maple-Red	14	<ul style="list-style-type: none"> • Co-dominant stems • Poor branch structure
432	Oak-White	12	<ul style="list-style-type: none"> • Co-dominant stems • Uneven crown
434	Oak-Northern Red	16	<ul style="list-style-type: none"> • Co-dominant stems • Uneven crown
435	Tupelo-Black	13	<ul style="list-style-type: none"> • Co-dominant stems
436	Oak-Black	13,10	<ul style="list-style-type: none"> • Co-dominant stems • Dead branches >2 • Uneven crown
437	Maple-Red	19,18,18	<ul style="list-style-type: none"> • Co-dominant stems • Dead branches >2
438	Tupelo-Black	12	<ul style="list-style-type: none"> • Uneven crown
439	Tupelo-Black	12	<ul style="list-style-type: none"> • Uneven crown
440	Tupelo-Black	13	<ul style="list-style-type: none"> • Co-dominant stems • Uneven crown
441	Oak-Black	23	<ul style="list-style-type: none"> • Dead branches >2
442	Tupelo-Black	13	<ul style="list-style-type: none"> • Uneven crown
447	Tupelo-Black	13	<ul style="list-style-type: none"> • Uneven crown

Tree ID	Common Name	DBH	Defect(s) or Observation(s)
451	Pine-Eastern White	25	<ul style="list-style-type: none"> • Dead branches >2
452	Maple-Red	20,12,12,8	<ul style="list-style-type: none"> • Co-dominant stems • Poor branch structure
453	Maple-Red	18,16,14,9	<ul style="list-style-type: none"> • Co-dominant stems • Dead branches <=2
454	Maple-Red	15,10	<ul style="list-style-type: none"> • Co-dominant stems • Dead branches >2
455	Maple-Red	16,13,8	<ul style="list-style-type: none"> • Co-dominant stems • Dead branches >2 <ul style="list-style-type: none"> • Included bark
456	Oak-Black	23,10	<ul style="list-style-type: none"> • Dead branches >2 • Poor branch structure
457	Maple-Red	22	<ul style="list-style-type: none"> • Uneven crown
458	Maple-Red	18,13,12	<ul style="list-style-type: none"> • Co-dominant stems • Dead branches <=2
459	Pine-Eastern White	13	<ul style="list-style-type: none"> • Dead branches <=2 • Uneven crown
460	Cherry-Black	12	<ul style="list-style-type: none"> • Co-dominant stems • Dead branches >2
461	Pine-Eastern White	27	<ul style="list-style-type: none"> • Co-dominant stems • Dead branches >2
462	Pine-Eastern White	31	<ul style="list-style-type: none"> • Dead branches >2
464	Tupelo-Black	14	<ul style="list-style-type: none"> • Co-dominant stems • Dieback (moderate) <ul style="list-style-type: none"> • Uneven crown
465	Pine-Eastern White	24	<ul style="list-style-type: none"> • Co-dominant stems • Dead branches >2
466	Maple-Red	21,19,18,10	<ul style="list-style-type: none"> • Co-dominant stems • Dead branches >2 <ul style="list-style-type: none"> • Uneven crown
468	Maple-Red	22	<ul style="list-style-type: none"> • Decay-stem • Uneven crown
469	Maple-Red	21	<ul style="list-style-type: none"> • Co-dominant stems • Dead branches >2 • Storm damage
470	Oak-Black	29	<ul style="list-style-type: none"> • Co-dominant stems • Dead branches >2 • Uneven crown
471	Pine-Eastern White	32	<ul style="list-style-type: none"> • Dead branches >2
472	Maple-Red	23	<ul style="list-style-type: none"> • Co-dominant stems
473	Oak-Black	27,25	<ul style="list-style-type: none"> • Co-dominant stems • Dead branches >2
474	Pine-Eastern White	12	<ul style="list-style-type: none"> • Dead branches <=2
475	Maple-Red	15	<ul style="list-style-type: none"> • Co-dominant stems

Tree ID	Common Name	DBH	Defect(s) or Observation(s)
476	Maple-Red	18	<ul style="list-style-type: none"> • Co-dominant stems • Dead branches <=2
477	Maple-Red	21	<ul style="list-style-type: none"> • Co-dominant stems • Decay-stem
478	Maple-Red	18	<ul style="list-style-type: none"> • Co-dominant stems • Uneven crown
479	Maple-Red	12,11	<ul style="list-style-type: none"> • Co-dominant stems
480	Maple-Red	21	<ul style="list-style-type: none"> • Co-dominant stems • Seam
482	Maple-Red	12	<ul style="list-style-type: none"> • Low vigor • Topping/heading cuts
483	Maple-Red	17	<ul style="list-style-type: none"> • Buried root collar • Dead branches <=2
485	Maple-Red	25,15	<ul style="list-style-type: none"> • Co-dominant stems • Dead branches >2
486	Maple-Red	13,11	<ul style="list-style-type: none"> • Co-dominant stems • Dead branches >2
487	Maple-Red	26,23	<ul style="list-style-type: none"> • Co-dominant stems • Dead branches >2 • Uneven crown
488	Maple-Red	25,10	<ul style="list-style-type: none"> • Co-dominant stems • Dead branches >2
489	Maple-Red	12,10	<ul style="list-style-type: none"> • Co-dominant stems • Dead branches <=2 • Decay-stem
490	Maple-Red	21	<ul style="list-style-type: none"> • Co-dominant stems • Dead branches >2 • Decay-stem
491	Maple-Red	28,12	<ul style="list-style-type: none"> • Co-dominant stems • Dead branches >2
492	Pine-Eastern White	12	<ul style="list-style-type: none"> • Dead branches <=2
494	Oak-Black	26	<ul style="list-style-type: none"> • Dead branches >2 • Uneven crown
495	Oak-Black	27	<ul style="list-style-type: none"> • Dead branches >2 • Uneven crown
497	Maple-Red	12	<ul style="list-style-type: none"> • Crack-stem
498	Maple-Red	18,14,14,8	<ul style="list-style-type: none"> • Co-dominant stems • Decay-stem
499	Maple-Red	13,8	<ul style="list-style-type: none"> • Co-dominant stems • Dead branches >2
500	Oak-White	24	<ul style="list-style-type: none"> • Dead branches >2
501	Oak-Northern Red	30	<ul style="list-style-type: none"> • Co-dominant stems • Dead branches >2
502	Oak-Northern Red	26,13	<ul style="list-style-type: none"> • Co-dominant stems • Dead branches >2 • Decay-stem

Tree ID	Common Name	DBH	Defect(s) or Observation(s)
503	Maple-Red	17	<ul style="list-style-type: none"> • Co-dominant stems • Dead branches <=2
504	Oak-White	19	<ul style="list-style-type: none"> • Co-dominant stems • Dead branches >2
505	Oak-Black	25	<ul style="list-style-type: none"> • Dead branches >2 <ul style="list-style-type: none"> • Low vigor • Uneven crown
506	Hickory-Mockernut	12	<ul style="list-style-type: none"> • Dead branches <=2
507	Cherry-Black	12	<ul style="list-style-type: none"> • Dead branches <=2
508	Maple-Red	23,21,12	<ul style="list-style-type: none"> • Co-dominant stems • Dead branches >2
509	Oak-Black	12	<ul style="list-style-type: none"> • Dead branches <=2
510	Maple-Red	19,19	<ul style="list-style-type: none"> • Co-dominant stems • Dead branches >2
511	Oak-Black	24	<ul style="list-style-type: none"> • Dead branches >2
512	Maple-Red	17,8	<ul style="list-style-type: none"> • Co-dominant stems • Poor branch structure
513	Maple-Red	20,14	<ul style="list-style-type: none"> • Co-dominant stems • Dead branches >2
515	Maple-Red	12,9,8	<ul style="list-style-type: none"> • Co-dominant stems • Dead branches <=2
516	Hickory-Mockernut	20	<ul style="list-style-type: none"> • Uneven crown
518	Oak-Northern Red	26	<ul style="list-style-type: none"> • Dead branches >2
519	Hickory-Mockernut	20	<ul style="list-style-type: none"> • Dead branches >2
520	Hickory-Mockernut	18	<ul style="list-style-type: none"> • Co-dominant stems • Wound-stem
521	Oak-Northern Red	34	<ul style="list-style-type: none"> • Dead branches >2
522	Oak-Northern Red	20	<ul style="list-style-type: none"> • Dead branches >2
523	Hickory-Mockernut	12	<ul style="list-style-type: none"> • Dead branches <=2
524	Oak-White	20	<ul style="list-style-type: none"> • Dead branches >2 • Uneven crown
525	Pine-Eastern White	13	<ul style="list-style-type: none"> • Dead branches <=2
526	Oak-Northern Red	34	<ul style="list-style-type: none"> • Co-dominant stems • Dead branches >2
527	Oak-Northern Red	18	<ul style="list-style-type: none"> • Dead branches >2
529	Ash-White	15	<ul style="list-style-type: none"> • Dead branches >2 <ul style="list-style-type: none"> • Sweep
531	Hickory-Mockernut	18	<ul style="list-style-type: none"> • Dead branches <=2
533	Oak-Northern Red	45	<ul style="list-style-type: none"> • Co-dominant stems • Dead branches >2
534	Maple-Red	12	<ul style="list-style-type: none"> • Co-dominant stems • Dead branches <=2
535	Maple-Red	18	<ul style="list-style-type: none"> • Dead branches >2 <ul style="list-style-type: none"> • Wound-stem
536	Oak-Black	30	<ul style="list-style-type: none"> • Dead branches >2

Tree ID	Common Name	DBH	Defect(s) or Observation(s)
537	Oak-Northern Red	14	<ul style="list-style-type: none"> • Uneven crown
538	Oak-Black	24	<ul style="list-style-type: none"> • Dead branches >2
539	Oak-Northern Red	34	<ul style="list-style-type: none"> • Co-dominant stems • Dead branches >2
540	Hickory-Mockernut	12	<ul style="list-style-type: none"> • Dead branches <=2
541	Oak-Northern Red	35	<ul style="list-style-type: none"> • Co-dominant stems • Dead branches >2
542	Maple-Red	13	<ul style="list-style-type: none"> • Dead branches <=2
544	Hickory-Mockernut	12	<ul style="list-style-type: none"> • Dead branches <=2
545	Maple-Red	18,14,14,8,6	<ul style="list-style-type: none"> • Co-dominant stems • Dead branches <=2 <ul style="list-style-type: none"> • Included bark
546	Maple-Red	12	<ul style="list-style-type: none"> • Dead branches <=2
547	Oak-Northern Red	17	<ul style="list-style-type: none"> • Dead branches >2
548	Maple-Red	14,13	<ul style="list-style-type: none"> • Co-dominant stems • Dead branches >2
549	Oak-Black	16	<ul style="list-style-type: none"> • Co-dominant stems • Dead branches >2
550	Maple-Red	15,10	<ul style="list-style-type: none"> • Co-dominant stems • Dead branches >2
551	Maple-Red	17	<ul style="list-style-type: none"> • Uneven crown
552	Hickory-Mockernut	13	<ul style="list-style-type: none"> • Dead branches <=2
553	Oak-Northern Red	52	<ul style="list-style-type: none"> • Co-dominant stems • Dead branches >2
554	Oak-Northern Red	29,22,22,15	<ul style="list-style-type: none"> • Co-dominant stems • Dead branches >2
555	Oak-Northern Red	14,11	<ul style="list-style-type: none"> • Co-dominant stems • Dead branches >2
556	Oak-Northern Red	18	<ul style="list-style-type: none"> • Dead branches <=2 <ul style="list-style-type: none"> • Decay-stem
557	Oak-Northern Red	23	<ul style="list-style-type: none"> • Co-dominant stems • Dead branches >2
558	Oak-Northern Red	26	<ul style="list-style-type: none"> • Co-dominant stems • Dead branches >2
559	Oak-Northern Red	17	<ul style="list-style-type: none"> • Co-dominant stems
560	Maple-Red	13	<ul style="list-style-type: none"> • Dead branches >2
561	Maple-Red	16	<ul style="list-style-type: none"> • Dead branches >2 <ul style="list-style-type: none"> • Decay-stem
562	Maple-Red	14	<ul style="list-style-type: none"> • Uneven crown • Wound-stem
563	Oak-Northern Red	38	<ul style="list-style-type: none"> • Co-dominant stems • Dead branches >2 <ul style="list-style-type: none"> • Included bark
564	Oak-Northern Red	35	<ul style="list-style-type: none"> • Dead branches >2

Tree ID	Common Name	DBH	Defect(s) or Observation(s)
565	Maple-Red	12,8	<ul style="list-style-type: none"> • Co-dominant stems • Dead branches >2
566	Maple-Red	12	<ul style="list-style-type: none"> • Decay-stem • Fungi/conks
567	Oak-Northern Red	38	<ul style="list-style-type: none"> • Co-dominant stems • Dead branches >2 • Decay-stem
568	Oak-Northern Red	31	<ul style="list-style-type: none"> • Co-dominant stems • Dead branches >2
569	Oak-Northern Red	46	<ul style="list-style-type: none"> • Co-dominant stems • Dead branches >2 • Included bark
570	Maple-Red	14,12	<ul style="list-style-type: none"> • Co-dominant stems • Dead branches <=2 • Decay-stem
572	Ash-White	24	<ul style="list-style-type: none"> • Co-dominant stems
573	Maple-Red	13	<ul style="list-style-type: none"> • Dead branches <=2 • Uneven crown

SAMPLE PLOTS



SAMPLE PLOT INVENTORY

As part of the inventory process, the Inventory Team recorded DBH, species, and condition of all trees over 2 inches diameter in two 1/10th acre plots within the interior section of the property.

The area had been recently disturbed with a series of cleared areas and multiple large paths having been driven through the plot. I estimated 15% of the area has been disturbed prior to our inventory and increased the estimated tree numbers accordingly.

By accounting for the disturbed area there are 16.5 trees between 6 and 12 inches, and 15.5 trees over 12 inches in the .2 acres sample plots.

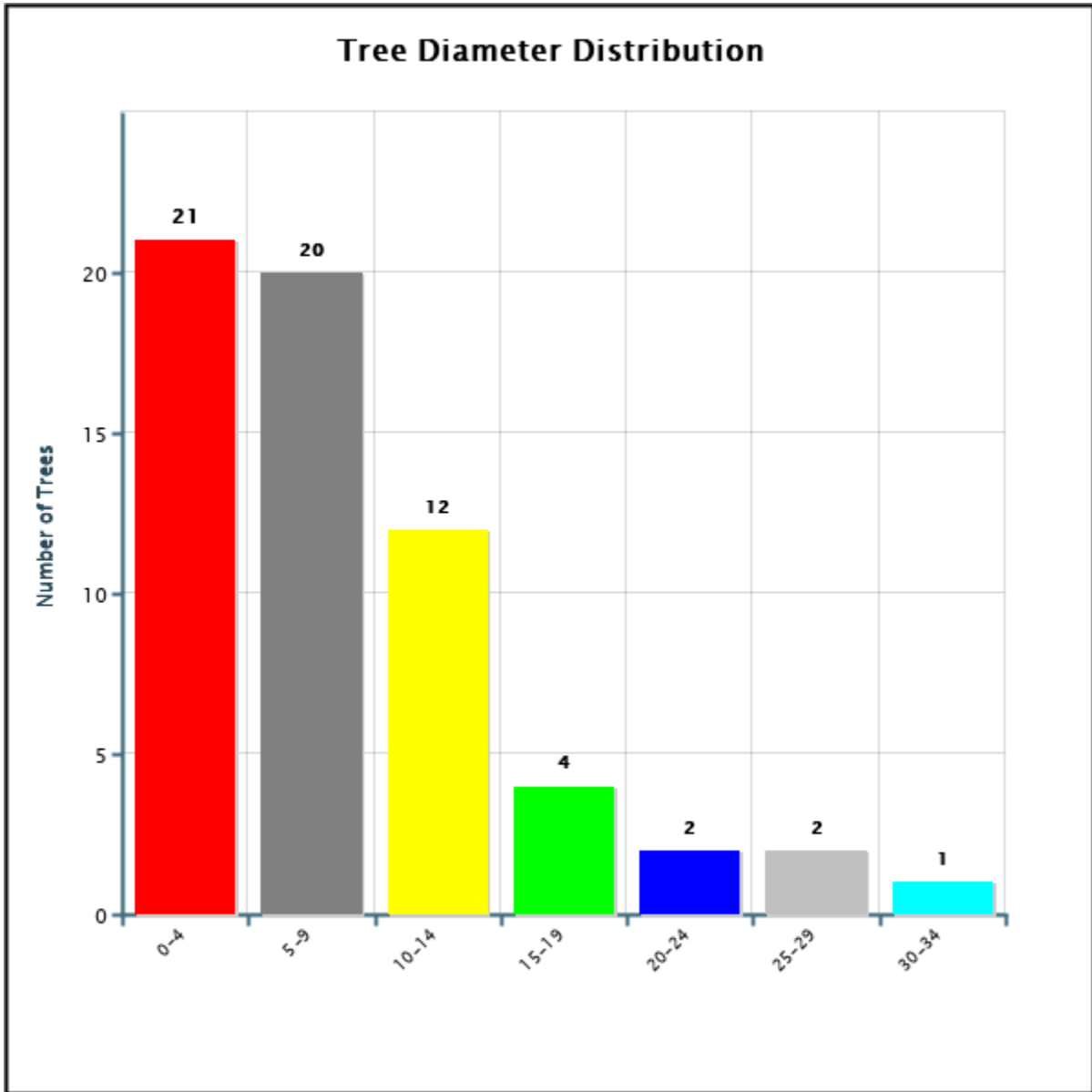
I expanded this data to the entire site and estimated that there are approximately 528 trees between 6 and 12 inches in diameter, and 496 trees over 12 inches in diameter.

The species identified in the sample plots were:

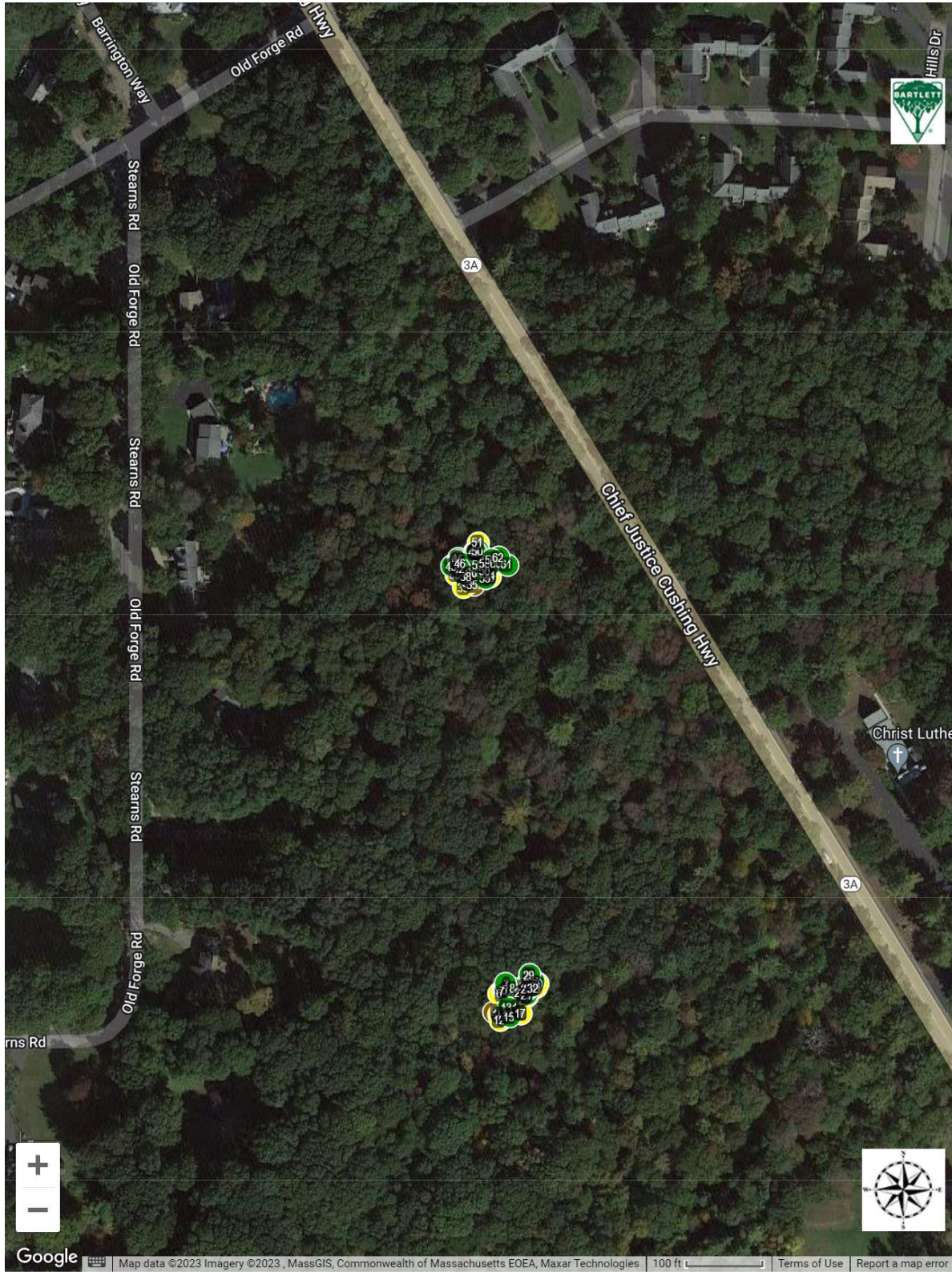
SAMPLE PLOT TREE SPECIES IDENTIFIED

Genus	Species	Common Name	Count	% Distribution Total
<i>Acer</i>	<i>rubrum</i>	Maple-Red	14	23%
<i>Betula</i>	<i>lenta</i>	Birch-Sweet	1	2%
<i>Carya</i>	<i>glabra</i>	Hickory-Pignut	1	2%
<i>Ilex</i>	<i>opaca</i>	Holly-American	3	5%
<i>Nyssa</i>	<i>sylvatica</i>	Tupelo-Black	27	44%
<i>Pinus</i>	<i>strobus</i>	Pine-Eastern White	10	16%
<i>Prunus</i>	<i>serotina</i>	Cherry-Black	1	2%
	<i>alba</i>	Oak-White	1	2%
<i>Quercus</i>	<i>rubra</i>	Oak-Northern Red	1	2%
	<i>velutina</i>	Oak-Black	3	5%
Quercus Total			5	8%
Grand Total			62	100%

The following chart illustrates numbers of trees in sample plots according to size per DBH:



SAMPLE PLOT TREES BY CONDITION CLASS



Condition: ● Dead ● Fair ● Good ● Poor

SAMPLE PLOT ENTIRE INVENTORY (62 Trees)

Tree ID	Common Name	Genus	Species	DBH	Condition Class
1	Pine-Eastern White	<i>Pinus</i>	<i>strobus</i>	8	Dead
2	Tupelo-Black	<i>Nyssa</i>	<i>sylvatica</i>	3	Good
3	Tupelo-Black	<i>Nyssa</i>	<i>sylvatica</i>	7	Good
4	Tupelo-Black	<i>Nyssa</i>	<i>sylvatica</i>	5	Good
5	Oak-Northern Red	<i>Quercus</i>	<i>rubra</i>	23	Good
6	Pine-Eastern White	<i>Pinus</i>	<i>strobus</i>	3	Fair
7	Hickory-Pignut	<i>Carya</i>	<i>glabra</i>	12	Poor
8	Maple-Red	<i>Acer</i>	<i>rubrum</i>	14,13,10	Good
9	Maple-Red	<i>Acer</i>	<i>rubrum</i>	13	Dead
10	Pine-Eastern White	<i>Pinus</i>	<i>strobus</i>	7	Fair
11	Tupelo-Black	<i>Nyssa</i>	<i>sylvatica</i>	3	Good
12	Maple-Red	<i>Acer</i>	<i>rubrum</i>	33	Fair
13	Holly-American	<i>Ilex</i>	<i>opaca</i>	2	Good
14	Holly-American	<i>Ilex</i>	<i>opaca</i>	2	Good
15	Pine-Eastern White	<i>Pinus</i>	<i>strobus</i>	2	Good
16	Maple-Red	<i>Acer</i>	<i>rubrum</i>	11,9	Fair
17	Pine-Eastern White	<i>Pinus</i>	<i>strobus</i>	10	Dead
18	Maple-Red	<i>Acer</i>	<i>rubrum</i>	17	Fair
19	Maple-Red	<i>Acer</i>	<i>rubrum</i>	14,8	Good
20	Birch-Sweet	<i>Betula</i>	<i>lenta</i>	3	Fair
21	Pine-Eastern White	<i>Pinus</i>	<i>strobus</i>	3	Dead
22	Pine-Eastern White	<i>Pinus</i>	<i>strobus</i>	4	Dead
23	Tupelo-Black	<i>Nyssa</i>	<i>sylvatica</i>	3	Good
24	Tupelo-Black	<i>Nyssa</i>	<i>sylvatica</i>	5	Good
25	Tupelo-Black	<i>Nyssa</i>	<i>sylvatica</i>	11	Good
26	Tupelo-Black	<i>Nyssa</i>	<i>sylvatica</i>	4	Good
27	Tupelo-Black	<i>Nyssa</i>	<i>sylvatica</i>	6	Good
28	Pine-Eastern White	<i>Pinus</i>	<i>strobus</i>	8	Dead
29	Tupelo-Black	<i>Nyssa</i>	<i>sylvatica</i>	4	Good
30	Tupelo-Black	<i>Nyssa</i>	<i>sylvatica</i>	6	Fair
31	Tupelo-Black	<i>Nyssa</i>	<i>sylvatica</i>	5	Fair
32	Tupelo-Black	<i>Nyssa</i>	<i>sylvatica</i>	5	Fair
33	Maple-Red	<i>Acer</i>	<i>rubrum</i>	15	Fair
34	Tupelo-Black	<i>Nyssa</i>	<i>sylvatica</i>	6	Fair
35	Pine-Eastern White	<i>Pinus</i>	<i>strobus</i>	6	Dead
36	Maple-Red	<i>Acer</i>	<i>rubrum</i>	14,12	Poor
37	Tupelo-Black	<i>Nyssa</i>	<i>sylvatica</i>	5	Good
38	Oak-White	<i>Quercus</i>	<i>alba</i>	19	Good
39	Oak-Black	<i>Quercus</i>	<i>velutina</i>	25,22	Fair

Tree ID	Common Name	Genus	Species	DBH	Condition Class
40	Tupelo-Black	<i>Nyssa</i>	<i>sylvatica</i>	2	Fair
41	Tupelo-Black	<i>Nyssa</i>	<i>sylvatica</i>	3	Fair
42	Maple-Red	<i>Acer</i>	<i>rubrum</i>	14,12	Good
43	Tupelo-Black	<i>Nyssa</i>	<i>sylvatica</i>	6	Good
44	Tupelo-Black	<i>Nyssa</i>	<i>sylvatica</i>	7,2	Good
45	Tupelo-Black	<i>Nyssa</i>	<i>sylvatica</i>	5	Good
46	Tupelo-Black	<i>Nyssa</i>	<i>sylvatica</i>	14	Good
47	Cherry-Black	<i>Prunus</i>	<i>serotina</i>	13,12	Good
48	Maple-Red	<i>Acer</i>	<i>rubrum</i>	2	Good
49	Maple-Red	<i>Acer</i>	<i>rubrum</i>	4	Dead
50	Maple-Red	<i>Acer</i>	<i>rubrum</i>	2	Good
51	Maple-Red	<i>Acer</i>	<i>rubrum</i>	2	Fair
52	Tupelo-Black	<i>Nyssa</i>	<i>sylvatica</i>	7	Good
53	Oak-Black	<i>Quercus</i>	<i>velutina</i>	20	Fair
54	Pine-Eastern White	<i>Pinus</i>	<i>strobus</i>	4	Dead
55	Holly-American	<i>Ilex</i>	<i>opaca</i>	3	Good
56	Oak-Black	<i>Quercus</i>	<i>velutina</i>	28	Good
57	Tupelo-Black	<i>Nyssa</i>	<i>sylvatica</i>	6	Good
58	Tupelo-Black	<i>Nyssa</i>	<i>sylvatica</i>	6	Good
59	Tupelo-Black	<i>Nyssa</i>	<i>sylvatica</i>	11	Good
60	Tupelo-Black	<i>Nyssa</i>	<i>sylvatica</i>	8	Fair
61	Tupelo-Black	<i>Nyssa</i>	<i>sylvatica</i>	15,12	Good
62	Maple-Red	<i>Acer</i>	<i>rubrum</i>	2	Good

TREE IMPACTS



TREES WITH EXPECTED IMPACTS

The table below communicates tree protection zone (TPZ) as calculated for trees along the area of disturbance based on tree DBH, tree condition, condition class, and species tolerance to root impacts.

The following actions will minimize impacts to trees near the area of disturbance:

- Install an 8-foot tall chainlink fence along the tree protection zone around trees near area of disturbance, do not move fence for any reason
- Do not fill or cut soil within the tree protection zone
- Do not stockpile materials of any kind in the tree protection zone
- Do not drain water or any liquid waste

Tree ID	Common Name	Condition Class	TPZ (ft)
5	Oak-Black	Dead	0.0
7	Oak-Black	Good	17.6
8	Oak-Black	Good	16.1
9	Oak-Northern Red	Fair	27.0
10	Oak-Black	Poor	21.8
11	Oak-Black	Good	18.4
14	Pine-Eastern White	Dead	0.0
17	Oak-Black	Fair	18.0
22	Oak-White	Good	19.6
23	Maple-Red	Fair	14.4
26	Oak-Black	Good	16.1
27	Pine-Eastern White	Dead	0.0
29	Pine-Eastern White	Good	15.3
33	Pine-Eastern White	Good	13.6
39	Oak-Black	Good	13.0
41	Oak-Black	Good	27.5
44	Maple-Red	Good	11.5
46	Maple-Red	Good	21.4
52	Oak-Black	Good	16.1
53	Oak-Black	Fair	21.6
56	Tupelo-Black	Good	15.3
57	Tupelo-Black	Good	18.4
58	Maple-Red	Fair	16.2
59	Pine-Eastern White	Poor	31.9
60	Maple-Red	Fair	34.2

Tree ID	Common Name	Condition Class	TPZ (ft)
61	Maple-Red	Good	22.2
68	Maple-Red	Fair	18.0
77	Oak-Black	Good	24.5
78	Oak-Black	Good	14.5
79	Oak-Black	Good	9.2
80	Maple-Red	Poor	34.7
81	Oak-Black	Good	19.9
82	Maple-Red	Poor	13.9
83	Maple-Red	Good	13.8
91	Oak-Black	Good	23.0
93	Maple-Red	Good	14.5
94	Pine-Eastern White	Fair	41.0
95	Maple-Red	Fair	20.7
96	Hickory-Mockernut	Good	17.4
97	Ash-White	Fair	14.0
100	Maple-Red	Good	27.5
101	Cherry-Black	Fair	16.0
107	Tupelo-Black	Good	10.7
108	Tupelo-Black	Good	16.4
109	Tupelo-Black	Good	12.2
110	Tupelo-Black	Good	18.7
116	Tupelo-Black	Fair	29.7
117	Tupelo-Black	Good	9.9
118	Tupelo-Black	Good	13.0
119	Maple-Red	Good	23.3
120	Oak-Black	Poor	35.6
121	Maple-Red	Good	18.4
125	Tupelo-Black	Good	14.2
126	Pine-Eastern White	Dead	0.0
127	Maple-Red	Good	14.9
128	Oak-Black	Poor	29.2
129	Tupelo-Black	Dead	0.0
130	Maple-Red	Good	15.3
138	Maple-Red	Fair	42.8
155	Ash-White	Poor	18.7
207	Oak-Black	Good	15.3
208	Oak-Black	Good	19.9
209	Maple-Red	Fair	10.8
210	Maple-Red	Good	9.9
211	Oak-Black	Good	23.0

Tree ID	Common Name	Condition Class	TPZ (ft)
212	Hickory-Mockernut	Poor	14.3
217	Oak-Black	Good	13.8
218	Oak-Black	Good	9.2
219	Oak-Black	Fair	12.6
220	Oak-Black	Poor	19.8
228	Oak-Black	Good	15.3
229	Hickory-Mockernut	Good	16.2
231	Oak-Black	Good	17.6
232	Oak-Black	Fair	24.3
234	Beech-American	Fair	15.6
235	Maple-Red	Good	11.5
242	Maple-Red	Fair	27.9
243	Tupelo-Black	Poor	18.3
244	Oak-Black	Good	17.6
246	Maple-Red	Poor	15.8
248	Tupelo-Black	Good	10.7
249	Tupelo-Black	Good	12.6
250	Maple-Red	Fair	10.8
251	Ash-White	Poor	23.1
252	Maple-Red	Fair	45.0
253	Maple-Red	Good	18.7
254	Maple-Red	Good	19.1
255	Maple-Red	Poor	23.8
349	Maple-Red	Fair	18.0
352	Oak-Black	Good	9.9
353	Oak-Black	Good	22.2
399	Pine-Eastern White	Good	26.4
401	Tupelo-Black	Good	14.2
430	Maple-Red	Good	26.0
434	Oak-Northern Red	Good	12.2
435	Tupelo-Black	Good	9.9
436	Oak-Black	Good	13.8
437	Maple-Red	Fair	41.4
440	Tupelo-Black	Good	9.9
444	Tupelo-Black	Good	11.5
452	Maple-Red	Good	35.2
463	Tupelo-Black	Good	10.7
464	Tupelo-Black	Poor	13.9
468	Maple-Red	Poor	21.8
472	Maple-Red	Fair	20.7

Tree ID	Common Name	Condition Class	TPZ (ft)
473	Oak-Black	Good	30.2
474	Pine-Eastern White	Good	10.2
475	Maple-Red	Good	11.5
476	Maple-Red	Good	13.8
508	Maple-Red	Good	34.8
509	Oak-Black	Good	9.2
510	Maple-Red	Good	21.8
511	Oak-Black	Good	18.4
513	Maple-Red	Fair	24.3
515	Maple-Red	Good	18.7
516	Hickory-Mockernut	Good	17.0
530	Beech-American	Good	14.4
531	Hickory-Mockernut	Good	15.3
532	Hickory-Mockernut	Good	11.9
533	Oak-Northern Red	Good	34.4
534	Maple-Red	Good	9.2
547	Oak-Northern Red	Good	13.0

ENTIRE INVENTORY



Tree ID	Common Name	Genus	Species	DBH	Height Class	Age Class	Condition Class	Tree Asset Value
1	Oak-White	<i>Quercus</i>	<i>alba</i>	17	Large	Semi-mature	Fair	\$6,034.00
2	Oak-Northern Red	<i>Quercus</i>	<i>rubra</i>	36	Large	Mature	Poor	\$15,539.00
3	Oak-Black	<i>Quercus</i>	<i>velutina</i>	14	Large	Semi-mature	Good	\$5,729.00
4	Oak-Black	<i>Quercus</i>	<i>velutina</i>	19	Large	Mature	Good	\$10,553.00
5	Oak-Black	<i>Quercus</i>	<i>velutina</i>	21	Medium	Mature	Dead	...
6	Oak-Black	<i>Quercus</i>	<i>velutina</i>	17	Medium	Semi-mature	Dead	...
7	Oak-Black	<i>Quercus</i>	<i>velutina</i>	23	Large	Mature	Good	\$15,464.00
8	Oak-Black	<i>Quercus</i>	<i>velutina</i>	21	Large	Mature	Good	\$12,891.00
9	Oak-Northern Red	<i>Quercus</i>	<i>rubra</i>	30	Large	Mature	Fair	\$18,792.00
10	Oak-Black	<i>Quercus</i>	<i>velutina</i>	22	Large	Mature	Poor	\$6,063.00
11	Oak-Black	<i>Quercus</i>	<i>velutina</i>	24	Large	Mature	Good	\$16,838.00
12	Pine-Eastern White	<i>Pinus</i>	<i>strobus</i>	33	Large	Mature	Fair	\$19,875.00
13	Maple-Red	<i>Acer</i>	<i>rubrum</i>	14	Large	Semi-mature	Good	\$4,523.00
14	Pine-Eastern White	<i>Pinus</i>	<i>strobus</i>	12	Medium	Semi-mature	Dead	...
15	Oak-Black	<i>Quercus</i>	<i>velutina</i>	28	Large	Mature	Good	\$22,918.00
16	Tupelo-Black	<i>Nyssa</i>	<i>sylvatica</i>	18	Large	Mature	Good	\$9,471.00
17	Oak-Black	<i>Quercus</i>	<i>velutina</i>	20	Large	Mature	Fair	\$8,352.00
18	Oak-Black	<i>Quercus</i>	<i>velutina</i>	25	Large	Mature	Good	\$18,270.00
19	Oak-Black	<i>Quercus</i>	<i>velutina</i>	18	Large	Mature	Poor	\$4,059.00
20	Oak-Northern Red	<i>Quercus</i>	<i>rubra</i>	21	Large	Mature	Fair	\$9,208.00
21	Oak-Black	<i>Quercus</i>	<i>velutina</i>	13	Large	Semi-mature	Good	\$4,940.00
22	Oak-White	<i>Quercus</i>	<i>alba</i>	23	Large	Mature	Good	\$15,464.00
23	Maple-Red	<i>Acer</i>	<i>rubrum</i>	16	Large	Mature	Fair	\$4,220.00
24	Pine-Eastern White	<i>Pinus</i>	<i>strobus</i>	12	Large	Semi-mature	Fair	\$2,690.00
25	Oak-Black	<i>Quercus</i>	<i>velutina</i>	23	Large	Mature	Fair	\$11,046.00
26	Oak-Black	<i>Quercus</i>	<i>velutina</i>	21	Large	Mature	Good	\$12,891.00
27	Pine-Eastern White	<i>Pinus</i>	<i>strobus</i>	12	Medium	Semi-mature	Dead	...
28	Pine-Eastern White	<i>Pinus</i>	<i>strobus</i>	14	Large	Semi-mature	Good	\$5,126.00

Tree ID	Common Name	Genus	Species	DBH	Height Class	Age Class	Condition Class	Tree Asset Value
29	Pine-Eastern White	<i>Pinus</i>	<i>strobus</i>	18	Large	Semi-mature	Good	\$8,474.00
30	Pine-Eastern White	<i>Pinus</i>	<i>strobus</i>	12	Medium	Semi-mature	Dead	...
31	Oak-Black	<i>Quercus</i>	<i>velutina</i>	24	Large	Mature	Good	\$16,838.00
32	Oak-Black	<i>Quercus</i>	<i>velutina</i>	31	Large	Mature	Fair	\$19,667.00
33	Pine-Eastern White	<i>Pinus</i>	<i>strobus</i>	16	Large	Semi-mature	Good	\$6,695.00
34	Pine-Eastern White	<i>Pinus</i>	<i>strobus</i>	13	Large	Semi-mature	Good	\$4,420.00
35	Maple-Red	<i>Acer</i>	<i>rubrum</i>	15	Large	Semi-mature	Good	\$5,192.00
36	Maple-Red	<i>Acer</i>	<i>rubrum</i>	12	Large	Semi-mature	Good	\$3,323.00
37	Tupelo-Black	<i>Nyssa</i>	<i>sylvatica</i>	17	Large	Mature	Fair	\$6,034.00
38	Oak-Black	<i>Quercus</i>	<i>velutina</i>	24	Large	Mature	Fair	\$12,027.00
39	Oak-Black	<i>Quercus</i>	<i>velutina</i>	17	Large	Semi-mature	Good	\$8,448.00
40	Tupelo-Black	<i>Nyssa</i>	<i>sylvatica</i>	13	Large	Semi-mature	Good	\$4,940.00
41	Oak-Black	<i>Quercus</i>	<i>velutina</i>	36	Large	Mature	Good	\$36,258.00
42	Maple-Red	<i>Acer</i>	<i>rubrum</i>	13	Large	Semi-mature	Good	\$3,900.00
43	Oak-Black	<i>Quercus</i>	<i>velutina</i>	27	Large	Mature	Fair	\$15,222.00
44	Maple-Red	<i>Acer</i>	<i>rubrum</i>	15	Large	Semi-mature	Good	\$5,192.00
45	Maple-Red	<i>Acer</i>	<i>rubrum</i>	27	Large	Mature	Good	\$16,824.00
46	Maple-Red	<i>Acer</i>	<i>rubrum</i>	28	Large	Mature	Good	\$18,093.00
47	Maple-Red	<i>Acer</i>	<i>rubrum</i>	24	Large	Mature	Fair	\$9,495.00
48	Tupelo-Black	<i>Nyssa</i>	<i>sylvatica</i>	15	Large	Semi-mature	Good	\$6,577.00
49	Oak-Black	<i>Quercus</i>	<i>velutina</i>	27	Large	Mature	Fair	\$15,222.00
50	Pine-Eastern White	<i>Pinus</i>	<i>strobus</i>	18	Large	Semi-mature	Poor	\$3,631.00
51	Maple-Red	<i>Acer</i>	<i>rubrum</i>	14	Large	Semi-mature	Fair	\$3,231.00
52	Oak-Black	<i>Quercus</i>	<i>velutina</i>	21	Large	Mature	Good	\$12,891.00
53	Oak-Black	<i>Quercus</i>	<i>velutina</i>	24	Large	Mature	Fair	\$12,027.00

Tree ID	Common Name	Genus	Species	DBH	Height Class	Age Class	Condition Class	Tree Asset Value
54	Maple-Red	<i>Acer</i>	<i>rubrum</i>	15	Large	Semi-mature	Fair	\$3,709.00
55	Maple-Red	<i>Acer</i>	<i>rubrum</i>	13	Large	Semi-mature	Good	\$3,900.00
56	Tupelo-Black	<i>Nyssa</i>	<i>sylvatica</i>	20	Large	Mature	Good	\$11,693.00
57	Tupelo-Black	<i>Nyssa</i>	<i>sylvatica</i>	24	Large	Mature	Good	\$16,838.00
58	Maple-Red	<i>Acer</i>	<i>rubrum</i>	18	Large	Mature	Fair	\$5,341.00
59	Pine-Eastern White	<i>Pinus</i>	<i>strobus</i>	29	Large	Mature	Poor	\$9,427.00
60	Maple-Red	<i>Acer</i>	<i>rubrum</i>	38	Large	Mature	Fair	\$22,315.00
61	Maple-Red	<i>Acer</i>	<i>rubrum</i>	29	Large	Mature	Good	\$19,409.00
62	Oak-Black	<i>Quercus</i>	<i>velutina</i>	24	Large	Mature	Good	\$16,838.00
63	Maple-Red	<i>Acer</i>	<i>rubrum</i>	20	Large	Mature	Good	\$9,231.00
64	Tupelo-Black	<i>Nyssa</i>	<i>sylvatica</i>	14	Large	Semi-mature	Good	\$5,729.00
65	Maple-Red	<i>Acer</i>	<i>rubrum</i>	24,9	Large	Mature	Good	\$15,162.00
66	Oak-Black	<i>Quercus</i>	<i>velutina</i>	29	Large	Mature	Good	\$24,585.00
67	Maple-Red	<i>Acer</i>	<i>rubrum</i>	23	Medium	Mature	Dead	...
68	Maple-Red	<i>Acer</i>	<i>rubrum</i>	20	Large	Mature	Fair	\$6,594.00
69	Tupelo-Black	<i>Nyssa</i>	<i>sylvatica</i>	19	Large	Mature	Poor	\$4,522.00
70	Tupelo-Black	<i>Nyssa</i>	<i>sylvatica</i>	12	Medium	Semi-mature	Good	\$4,209.00
71	Maple-Red	<i>Acer</i>	<i>rubrum</i>	15	Medium	Semi-mature	Poor	\$2,225.00
72	Maple-Red	<i>Acer</i>	<i>rubrum</i>	20	Large	Mature	Fair	\$6,594.00
73	Tupelo-Black	<i>Nyssa</i>	<i>sylvatica</i>	27	Large	Mature	Poor	\$9,133.00
74	Maple-Red	<i>Acer</i>	<i>rubrum</i>	14	Large	Semi-mature	Good	\$4,523.00
75	Maple-Red	<i>Acer</i>	<i>rubrum</i>	16	Large	Mature	Poor	\$2,532.00
76	Maple-Red	<i>Acer</i>	<i>rubrum</i>	27	Large	Mature	Good	\$16,824.00
77	Oak-Black	<i>Quercus</i>	<i>velutina</i>	32	Large	Mature	Good	\$29,328.00
78	Oak-Black	<i>Quercus</i>	<i>velutina</i>	19	Large	Mature	Good	\$10,553.00
79	Oak-Black	<i>Quercus</i>	<i>velutina</i>	12	Large	Semi-mature	Good	\$4,209.00
80	Maple-Red	<i>Acer</i>	<i>rubrum</i>	35	Large	Mature	Poor	\$11,694.00
81	Oak-Black	<i>Quercus</i>	<i>velutina</i>	26	Large	Mature	Good	\$19,761.00
82	Maple-Red	<i>Acer</i>	<i>rubrum</i>	14	Large	Semi-mature	Poor	\$1,938.00
83	Maple-Red	<i>Acer</i>	<i>rubrum</i>	18	Large	Mature	Good	\$7,477.00

Tree ID	Common Name	Genus	Species	DBH	Height Class	Age Class	Condition Class	Tree Asset Value
84	Oak-Northern Red	<i>Quercus</i>	<i>rubra</i>	30	Large	Mature	Good	\$26,310.00
85	Maple-Red	<i>Acer</i>	<i>rubrum</i>	20	Large	Mature	Good	\$9,231.00
86	Oak-Black	<i>Quercus</i>	<i>velutina</i>	34	Large	Mature	Good	\$32,843.00
87	Maple-Red	<i>Acer</i>	<i>rubrum</i>	12	Large	Semi-mature	Good	\$3,323.00
88	Oak-Black	<i>Quercus</i>	<i>velutina</i>	28	Large	Mature	Good	\$22,918.00
89	Tupelo-Black	<i>Nyssa</i>	<i>sylvatica</i>	13	Large	Semi-mature	Good	\$4,940.00
90	Maple-Red	<i>Acer</i>	<i>rubrum</i>	13	Large	Semi-mature	Poor	\$1,671.00
91	Oak-Black	<i>Quercus</i>	<i>velutina</i>	30	Large	Mature	Good	\$26,310.00
92	Maple-Red	<i>Acer</i>	<i>rubrum</i>	17	Large	Mature	Poor	\$2,858.00
93	Maple-Red	<i>Acer</i>	<i>rubrum</i>	19	Large	Mature	Good	\$8,331.00
94	Pine-Eastern White	<i>Pinus</i>	<i>strobus</i>	41	Large	Mature	Fair	\$28,349.00
95	Maple-Red	<i>Acer</i>	<i>rubrum</i>	23	Large	Mature	Fair	\$8,720.00
96	Hickory-Mockernut	<i>Carya</i>	<i>tomentosa</i>	17,7	Large	Mature	Good	\$7,800.00
97	Ash-White	<i>Fraxinus</i>	<i>americana</i>	14	Large	Semi-mature	Fair	\$2,369.00
98	Maple-Red	<i>Acer</i>	<i>rubrum</i>	16	Large	Mature	Good	\$5,908.00
99	Maple-Red	<i>Acer</i>	<i>rubrum</i>	26	Large	Mature	Good	\$15,601.00
100	Maple-Red	<i>Acer</i>	<i>rubrum</i>	36	Large	Mature	Good	\$28,625.00
101	Cherry-Black	<i>Prunus</i>	<i>serotina</i>	16	Large	Semi-mature	Fair	\$2,532.00
102	Tupelo-Black	<i>Nyssa</i>	<i>sylvatica</i>	13	Large	Semi-mature	Fair	\$3,528.00
103	Tupelo-Black	<i>Nyssa</i>	<i>sylvatica</i>	14	Large	Semi-mature	Good	\$5,729.00
104	Tupelo-Black	<i>Nyssa</i>	<i>sylvatica</i>	13	Large	Semi-mature	Good	\$4,940.00
105	Tupelo-Black	<i>Nyssa</i>	<i>sylvatica</i>	17	Large	Mature	Good	\$8,448.00
106	Tupelo-Black	<i>Nyssa</i>	<i>sylvatica</i>	14	Large	Semi-mature	Good	\$5,729.00
107	Tupelo-Black	<i>Nyssa</i>	<i>sylvatica</i>	14	Large	Semi-mature	Good	\$5,729.00
108	Tupelo-Black	<i>Nyssa</i>	<i>sylvatica</i>	15,13	Large	Semi-mature	Good	\$11,517.00
109	Tupelo-Black	<i>Nyssa</i>	<i>sylvatica</i>	16	Large	Mature	Good	\$7,483.00

Tree ID	Common Name	Genus	Species	DBH	Height Class	Age Class	Condition Class	Tree Asset Value
110	Tupelo-Black	<i>Nyssa</i>	<i>sylvatica</i>	13,9,7	Large	Semi-mature	Good	\$8,740.00
111	Ash-White	<i>Fraxinus</i>	<i>americana</i>	17,15	Large	Semi-mature	Dead	...
112	Maple-Red	<i>Acer</i>	<i>rubrum</i>	15,14	Large	Semi-mature	Poor	\$4,164.00
113	Oak-Black	<i>Quercus</i>	<i>velutina</i>	32	Large	Mature	Fair	\$20,949.00
114	Oak-Black	<i>Quercus</i>	<i>velutina</i>	16	Large	Semi-mature	Good	\$7,483.00
115	Oak-Black	<i>Quercus</i>	<i>velutina</i>	25	Medium	Mature	Dead	...
116	Tupelo-Black	<i>Nyssa</i>	<i>sylvatica</i>	33	Large	Mature	Fair	\$22,213.00
117	Tupelo-Black	<i>Nyssa</i>	<i>sylvatica</i>	13	Large	Semi-mature	Good	\$4,940.00
118	Tupelo-Black	<i>Nyssa</i>	<i>sylvatica</i>	17	Large	Mature	Good	\$8,448.00
119	Maple-Red	<i>Acer</i>	<i>rubrum</i>	24,13	Large	Mature	Good	\$17,193.00
120	Oak-Black	<i>Quercus</i>	<i>velutina</i>	36	Large	Mature	Poor	\$15,539.00
121	Maple-Red	<i>Acer</i>	<i>rubrum</i>	17,14	Large	Mature	Good	\$11,193.00
122	Oak-Black	<i>Quercus</i>	<i>velutina</i>	21	Large	Mature	Good	\$12,891.00
123	Oak-Black	<i>Quercus</i>	<i>velutina</i>	28	Large	Mature	Good	\$22,918.00
124	Maple-Red	<i>Acer</i>	<i>rubrum</i>	20,18	Large	Mature	Good	\$16,709.00
125	Tupelo-Black	<i>Nyssa</i>	<i>sylvatica</i>	13,11	Large	Semi-mature	Good	\$8,477.00
126	Pine-Eastern White	<i>Pinus</i>	<i>strobus</i>	21	Large	Mature	Dead	...
127	Maple-Red	<i>Acer</i>	<i>rubrum</i>	12,5,5	Large	Semi-mature	Good	\$4,477.00
128	Oak-Black	<i>Quercus</i>	<i>velutina</i>	20,19	Large	Mature	Poor	\$9,534.00
129	Tupelo-Black	<i>Nyssa</i>	<i>sylvatica</i>	16	Medium	Mature	Dead	...
130	Maple-Red	<i>Acer</i>	<i>rubrum</i>	20	Large	Mature	Good	\$9,231.00
131	Maple-Red	<i>Acer</i>	<i>rubrum</i>	22,16,15	Large	Mature	Good	\$22,271.00
132	Hickory-Mockernut	<i>Carya</i>	<i>tomentosa</i>	14	Large	Semi-mature	Good	\$4,523.00
133	Maple-Red	<i>Acer</i>	<i>rubrum</i>	15	Large	Semi-mature	Poor	\$2,225.00
134	Maple-Red	<i>Acer</i>	<i>rubrum</i>	24,16,16	Large	Mature	Fair	\$17,935.00
135	Oak-Black	<i>Quercus</i>	<i>velutina</i>	16	Large	Semi-mature	Fair	\$5,345.00
136	Maple-Red	<i>Acer</i>	<i>rubrum</i>	12,10	Large	Semi-mature	Good	\$5,631.00
137	Oak-Black	<i>Quercus</i>	<i>velutina</i>	31	Large	Mature	Fair	\$19,667.00
138	Maple-Red	<i>Acer</i>	<i>rubrum</i>	20,19,18	Large	Mature	Fair	\$17,886.00

Tree ID	Common Name	Genus	Species	DBH	Height Class	Age Class	Condition Class	Tree Asset Value
139	Oak-Black	<i>Quercus</i>	<i>velutina</i>	26	Large	Mature	Good	\$19,761.00
140	Maple-Red	<i>Acer</i>	<i>rubrum</i>	12	Large	Semi-mature	Good	\$3,323.00
141	Maple-Red	<i>Acer</i>	<i>rubrum</i>	12,9	Large	Semi-mature	Poor	\$2,225.00
142	Oak-Black	<i>Quercus</i>	<i>velutina</i>	28	Large	Mature	Fair	\$16,370.00
143	Hickory-Mockernut	<i>Carya</i>	<i>tomentosa</i>	18	Large	Mature	Good	\$7,477.00
144	Maple-Red	<i>Acer</i>	<i>rubrum</i>	14	Large	Semi-mature	Good	\$4,523.00
145	Tupelo-Black	<i>Nyssa</i>	<i>sylvatica</i>	15	Large	Semi-mature	Good	\$6,577.00
146	Maple-Red	<i>Acer</i>	<i>rubrum</i>	15	Large	Semi-mature	Fair	\$3,709.00
147	Oak-Black	<i>Quercus</i>	<i>velutina</i>	27	Large	Mature	Good	\$21,311.00
148	Tupelo-Black	<i>Nyssa</i>	<i>sylvatica</i>	13	Large	Semi-mature	Good	\$4,940.00
149	Maple-Red	<i>Acer</i>	<i>rubrum</i>	19	Large	Mature	Fair	\$5,951.00
150	Maple-Red	<i>Acer</i>	<i>rubrum</i>	13,9,8	Large	Semi-mature	Poor	\$3,105.00
151	Maple-Red	<i>Acer</i>	<i>rubrum</i>	14	Large	Semi-mature	Good	\$4,523.00
152	Oak-Black	<i>Quercus</i>	<i>velutina</i>	17	Large	Semi-mature	Good	\$8,448.00
153	Oak-Black	<i>Quercus</i>	<i>velutina</i>	14	Large	Semi-mature	Good	\$5,729.00
154	Oak-Black	<i>Quercus</i>	<i>velutina</i>	17	Large	Semi-mature	Good	\$8,448.00
155	Ash-White	<i>Fraxinus</i>	<i>americana</i>	17	Large	Semi-mature	Poor	\$2,096.00
156	Maple-Red	<i>Acer</i>	<i>rubrum</i>	17	Large	Mature	Good	\$6,669.00
157	Oak-Northern Red	<i>Quercus</i>	<i>rubra</i>	22	Large	Mature	Good	\$14,148.00
158	Maple-Red	<i>Acer</i>	<i>rubrum</i>	18,10	Large	Mature	Poor	\$4,193.00
159	Maple-Red	<i>Acer</i>	<i>rubrum</i>	17	Medium	Mature	Dead	...
160	Maple-Red	<i>Acer</i>	<i>rubrum</i>	14	Large	Semi-mature	Fair	\$3,231.00
161	Maple-Red	<i>Acer</i>	<i>rubrum</i>	14	Large	Semi-mature	Fair	\$3,231.00
162	Maple-Red	<i>Acer</i>	<i>rubrum</i>	23	Large	Mature	Good	\$12,208.00
163	Maple-Red	<i>Acer</i>	<i>rubrum</i>	12	Large	Semi-mature	Good	\$3,323.00
164	Maple-Red	<i>Acer</i>	<i>rubrum</i>	20	Large	Mature	Good	\$9,231.00

Tree ID	Common Name	Genus	Species	DBH	Height Class	Age Class	Condition Class	Tree Asset Value
165	Maple-Red	<i>Acer</i>	<i>rubrum</i>	15	Large	Semi-mature	Good	\$5,192.00
166	Maple-Red	<i>Acer</i>	<i>rubrum</i>	19	Large	Mature	Good	\$8,331.00
167	Maple-Red	<i>Acer</i>	<i>rubrum</i>	22	Large	Mature	Good	\$11,170.00
168	Maple-Red	<i>Acer</i>	<i>rubrum</i>	16	Large	Mature	Fair	\$4,220.00
169	Ash-White	<i>Fraxinus</i>	<i>americana</i>	26	Large	Mature	Fair	\$8,172.00
170	Maple-Red	<i>Acer</i>	<i>rubrum</i>	12	Large	Semi-mature	Poor	\$1,424.00
171	Maple-Red	<i>Acer</i>	<i>rubrum</i>	14	Large	Semi-mature	Dead	...
172	Maple-Red	<i>Acer</i>	<i>rubrum</i>	19	Large	Mature	Fair	\$5,951.00
173	Maple-Red	<i>Acer</i>	<i>rubrum</i>	17	Large	Mature	Good	\$6,669.00
174	Maple-Red	<i>Acer</i>	<i>rubrum</i>	15,14	Large	Semi-mature	Poor	\$4,164.00
175	Oak-Black	<i>Quercus</i>	<i>velutina</i>	21	Large	Mature	Good	\$12,891.00
176	Pine-Eastern White	<i>Pinus</i>	<i>strobus</i>	12	Large	Semi-mature	Fair	\$2,690.00
177	Oak-Black	<i>Quercus</i>	<i>velutina</i>	28,24	Large	Mature	Good	\$39,757.00
178	Maple-Red	<i>Acer</i>	<i>rubrum</i>	18	Large	Mature	Fair	\$5,341.00
179	Maple-Red	<i>Acer</i>	<i>rubrum</i>	13	Large	Semi-mature	Fair	\$2,785.00
180	Maple-Red	<i>Acer</i>	<i>rubrum</i>	13	Large	Semi-mature	Poor	\$1,671.00
181	Maple-Red	<i>Acer</i>	<i>rubrum</i>	14	Large	Semi-mature	Fair	\$3,231.00
182	Maple-Red	<i>Acer</i>	<i>rubrum</i>	15	Large	Semi-mature	Good	\$5,192.00
183	Oak-Black	<i>Quercus</i>	<i>velutina</i>	21	Large	Mature	Good	\$12,891.00
184	Maple-Red	<i>Acer</i>	<i>rubrum</i>	14	Large	Semi-mature	Fair	\$3,231.00
185	Hickory-Mockernut	<i>Carya</i>	<i>tomentosa</i>	14	Large	Semi-mature	Good	\$4,523.00
186	Maple-Red	<i>Acer</i>	<i>rubrum</i>	17	Large	Mature	Fair	\$4,764.00
187	Oak-Black	<i>Quercus</i>	<i>velutina</i>	19	Large	Mature	Fair	\$7,538.00
188	Oak-Black	<i>Quercus</i>	<i>velutina</i>	27	Large	Mature	Good	\$21,311.00
189	Maple-Red	<i>Acer</i>	<i>rubrum</i>	19	Large	Mature	Poor	\$3,570.00
190	Hickory-Mockernut	<i>Carya</i>	<i>tomentosa</i>	13	Large	Semi-mature	Good	\$3,900.00
191	Oak-Black	<i>Quercus</i>	<i>velutina</i>	21	Large	Mature	Fair	\$9,208.00
192	Oak-Northern Red	<i>Quercus</i>	<i>rubra</i>	29	Large	Mature	Good	\$24,585.00
193	Hickory-Mockernut	<i>Carya</i>	<i>tomentosa</i>	24	Large	Mature	Fair	\$9,495.00

Tree ID	Common Name	Genus	Species	DBH	Height Class	Age Class	Condition Class	Tree Asset Value
194	Oak-Northern Red	<i>Quercus</i>	<i>rubra</i>	14	Large	Semi-mature	Good	\$5,729.00
195	Oak-White	<i>Quercus</i>	<i>alba</i>	12	Large	Semi-mature	Good	\$4,209.00
196	Hickory-Mockernut	<i>Carya</i>	<i>tomentosa</i>	18	Large	Mature	Good	\$7,477.00
197	Hickory-Mockernut	<i>Carya</i>	<i>tomentosa</i>	27	Large	Mature	Good	\$16,824.00
198	Oak-Black	<i>Quercus</i>	<i>velutina</i>	18	Large	Mature	Dead	...
199	Pine-Eastern White	<i>Pinus</i>	<i>strobus</i>	34	Large	Mature	Good	\$29,386.00
200	Oak-Black	<i>Quercus</i>	<i>velutina</i>	24	Large	Mature	Fair	\$12,027.00
201	Oak-Black	<i>Quercus</i>	<i>velutina</i>	13	Large	Semi-mature	Good	\$4,940.00
202	Oak-Black	<i>Quercus</i>	<i>velutina</i>	31	Large	Mature	Fair	\$19,667.00
203	Maple-Red	<i>Acer</i>	<i>rubrum</i>	14,9	Large	Semi-mature	Poor	\$2,739.00
204	Oak-Black	<i>Quercus</i>	<i>velutina</i>	20	Large	Mature	Good	\$11,693.00
205	Oak-Black	<i>Quercus</i>	<i>velutina</i>	27	Large	Mature	Good	\$21,311.00
206	Oak-Black	<i>Quercus</i>	<i>velutina</i>	25	Large	Mature	Good	\$18,270.00
207	Oak-Black	<i>Quercus</i>	<i>velutina</i>	20	Large	Mature	Good	\$11,693.00
208	Oak-Black	<i>Quercus</i>	<i>velutina</i>	26	Large	Mature	Good	\$19,761.00
209	Maple-Red	<i>Acer</i>	<i>rubrum</i>	12	Large	Semi-mature	Fair	\$2,373.00
210	Maple-Red	<i>Acer</i>	<i>rubrum</i>	13	Large	Semi-mature	Good	\$3,900.00
211	Oak-Black	<i>Quercus</i>	<i>velutina</i>	30	Large	Mature	Good	\$26,310.00
212	Hickory-Mockernut	<i>Carya</i>	<i>tomentosa</i>	13	Large	Semi-mature	Poor	\$1,671.00
213	Oak-Black	<i>Quercus</i>	<i>velutina</i>	13	Large	Semi-mature	Good	\$4,940.00
214	Oak-Black	<i>Quercus</i>	<i>velutina</i>	27,26	Large	Mature	Good	\$41,072.00
215	Hickory-Mockernut	<i>Carya</i>	<i>tomentosa</i>	15	Large	Semi-mature	Good	\$5,192.00
216	Maple-Red	<i>Acer</i>	<i>rubrum</i>	14	Large	Semi-mature	Fair	\$3,231.00
217	Oak-Black	<i>Quercus</i>	<i>velutina</i>	18	Large	Mature	Good	\$9,471.00
218	Oak-Black	<i>Quercus</i>	<i>velutina</i>	12	Large	Semi-mature	Good	\$4,209.00
219	Oak-Black	<i>Quercus</i>	<i>velutina</i>	14	Large	Semi-mature	Fair	\$4,092.00
220	Oak-Black	<i>Quercus</i>	<i>velutina</i>	20	Large	Mature	Poor	\$5,011.00

Tree ID	Common Name	Genus	Species	DBH	Height Class	Age Class	Condition Class	Tree Asset Value
221	Tupelo-Black	<i>Nyssa</i>	<i>sylvatica</i>	12	Large	Semi-mature	Good	\$4,209.00
222	Oak-Black	<i>Quercus</i>	<i>velutina</i>	26,20	Large	Mature	Good	\$31,455.00
223	Oak-Black	<i>Quercus</i>	<i>velutina</i>	18	Large	Mature	Good	\$9,471.00
224	Oak-Black	<i>Quercus</i>	<i>velutina</i>	16	Large	Semi-mature	Good	\$7,483.00
225	Oak-Black	<i>Quercus</i>	<i>velutina</i>	16,15	Large	Semi-mature	Good	\$14,061.00
226	Hickory-Mockernut	<i>Carya</i>	<i>tomentosa</i>	14	Large	Semi-mature	Good	\$4,523.00
227	Oak-Black	<i>Quercus</i>	<i>velutina</i>	30	Large	Mature	Good	\$26,310.00
228	Oak-Black	<i>Quercus</i>	<i>velutina</i>	20	Large	Mature	Good	\$11,693.00
229	Hickory-Mockernut	<i>Carya</i>	<i>tomentosa</i>	19	Large	Mature	Good	\$8,331.00
230	Oak-Black	<i>Quercus</i>	<i>velutina</i>	15	Medium	Semi-mature	Dead	...
231	Oak-Black	<i>Quercus</i>	<i>velutina</i>	23	Large	Mature	Good	\$15,464.00
232	Oak-Black	<i>Quercus</i>	<i>velutina</i>	27	Large	Mature	Fair	\$15,222.00
233	Hickory-Mockernut	<i>Carya</i>	<i>tomentosa</i>	14	Large	Mature	Good	\$4,523.00
234	Beech-American	<i>Fagus</i>	<i>grandifolia</i>	12	Large	Semi-mature	Fair	\$3,006.00
235	Maple-Red	<i>Acer</i>	<i>rubrum</i>	15	Large	Semi-mature	Good	\$5,192.00
236	Maple-Red	<i>Acer</i>	<i>rubrum</i>	13,12	Large	Semi-mature	Fair	\$5,159.00
237	Hickory-Mockernut	<i>Carya</i>	<i>tomentosa</i>	13	Large	Semi-mature	Good	\$3,900.00
238	Oak-Black	<i>Quercus</i>	<i>velutina</i>	29	Large	Mature	Fair	\$17,560.00
239	Maple-Red	<i>Acer</i>	<i>rubrum</i>	16,7	Large	Mature	Fair	\$5,027.00
240	Maple-Red	<i>Acer</i>	<i>rubrum</i>	16	Large	Mature	Fair	\$4,220.00
241	Tupelo-Black	<i>Nyssa</i>	<i>sylvatica</i>	12	Large	Semi-mature	Good	\$4,209.00
242	Maple-Red	<i>Acer</i>	<i>rubrum</i>	23,16	Large	Mature	Fair	\$12,940.00
243	Tupelo-Black	<i>Nyssa</i>	<i>sylvatica</i>	14,9	Large	Semi-mature	Poor	\$3,470.00
244	Oak-Black	<i>Quercus</i>	<i>velutina</i>	23	Large	Mature	Good	\$15,464.00
245	Maple-Red	<i>Acer</i>	<i>rubrum</i>	17	Large	Mature	Good	\$6,669.00
246	Maple-Red	<i>Acer</i>	<i>rubrum</i>	16	Large	Mature	Poor	\$2,532.00
247	Maple-Red	<i>Acer</i>	<i>rubrum</i>	15,14	Large	Semi-mature	Good	\$9,716.00
248	Tupelo-Black	<i>Nyssa</i>	<i>sylvatica</i>	14	Large	Semi-mature	Good	\$5,729.00
249	Tupelo-Black	<i>Nyssa</i>	<i>sylvatica</i>	12,9	Large	Semi-mature	Good	\$6,577.00

Tree ID	Common Name	Genus	Species	DBH	Height Class	Age Class	Condition Class	Tree Asset Value
250	Maple-Red	<i>Acer</i>	<i>rubrum</i>	12	Large	Semi-mature	Fair	\$2,373.00
251	Ash-White	<i>Fraxinus</i>	<i>americana</i>	14,14	Large	Semi-mature	Poor	\$2,843.00
252	Maple-Red	<i>Acer</i>	<i>rubrum</i>	18,16,12,12	Large	Mature	Fair	\$14,308.00
253	Maple-Red	<i>Acer</i>	<i>rubrum</i>	17,15	Large	Mature	Good	\$11,862.00
254	Maple-Red	<i>Acer</i>	<i>rubrum</i>	17,16	Large	Mature	Good	\$12,578.00
255	Maple-Red	<i>Acer</i>	<i>rubrum</i>	16,16	Large	Mature	Poor	\$5,064.00
256	Pine-Eastern White	<i>Pinus</i>	<i>strobus</i>	26	Large	Mature	Good	\$17,681.00
257	Pine-Eastern White	<i>Pinus</i>	<i>strobus</i>	31	Large	Mature	Poor	\$10,558.00
258	Ash-White	<i>Fraxinus</i>	<i>americana</i>	12,11,8	Large	Semi-mature	Good	\$5,568.00
259	Ash-White	<i>Fraxinus</i>	<i>americana</i>	12	Large	Semi-mature	Poor	\$1,044.00
260	Maple-Red	<i>Acer</i>	<i>rubrum</i>	17	Large	Mature	Fair	\$4,764.00
261	Tupelo-Black	<i>Nyssa</i>	<i>sylvatica</i>	14	Large	Semi-mature	Good	\$5,729.00
262	Maple-Red	<i>Acer</i>	<i>rubrum</i>	12	Large	Semi-mature	Good	\$3,323.00
263	Birch-Sweet	<i>Betula</i>	<i>lenta</i>	12	Large	Semi-mature	Good	\$1,994.00
264	Pine-Eastern White	<i>Pinus</i>	<i>strobus</i>	12	Large	Semi-mature	Good	\$3,766.00
265	Oak-Black	<i>Quercus</i>	<i>velutina</i>	26	Large	Mature	Good	\$19,761.00
266	Oak-Black	<i>Quercus</i>	<i>velutina</i>	20	Large	Mature	Good	\$11,693.00
267	Oak-Black	<i>Quercus</i>	<i>velutina</i>	22	Large	Mature	Good	\$14,148.00
268	Oak-Black	<i>Quercus</i>	<i>velutina</i>	13	Large	Semi-mature	Fair	\$3,528.00
269	Pine-Eastern White	<i>Pinus</i>	<i>strobus</i>	12	Large	Semi-mature	Dead	...
270	Maple-Red	<i>Acer</i>	<i>rubrum</i>	17	Large	Mature	Good	\$6,669.00
271	Maple-Red	<i>Acer</i>	<i>rubrum</i>	14	Large	Semi-mature	Good	\$4,523.00
272	Tupelo-Black	<i>Nyssa</i>	<i>sylvatica</i>	12	Large	Semi-mature	Good	\$4,209.00
273	Tupelo-Black	<i>Nyssa</i>	<i>sylvatica</i>	13	Large	Semi-mature	Good	\$4,940.00
274	Oak-Black	<i>Quercus</i>	<i>velutina</i>	17	Large	Semi-mature	Good	\$8,448.00

Tree ID	Common Name	Genus	Species	DBH	Height Class	Age Class	Condition Class	Tree Asset Value
275	Tupelo-Black	<i>Nyssa</i>	<i>sylvatica</i>	12,9	Large	Semi-mature	Good	\$6,577.00
276	Maple-Red	<i>Acer</i>	<i>rubrum</i>	12,10	Large	Semi-mature	Good	\$5,631.00
277	Tupelo-Black	<i>Nyssa</i>	<i>sylvatica</i>	12	Large	Semi-mature	Good	\$4,209.00
278	Maple-Red	<i>Acer</i>	<i>rubrum</i>	16,14,10,8	Large	Mature	Good	\$14,216.00
279	Pine-Eastern White	<i>Pinus</i>	<i>strobus</i>	13	Large	Semi-mature	Good	\$4,420.00
280	Pine-Eastern White	<i>Pinus</i>	<i>strobus</i>	15	Large	Semi-mature	Good	\$5,885.00
281	Maple-Red	<i>Acer</i>	<i>rubrum</i>	15,10,7	Large	Semi-mature	Good	\$8,631.00
282	Oak-Black	<i>Quercus</i>	<i>velutina</i>	25,18	Large	Mature	Fair	\$19,816.00
283	Maple-Red	<i>Acer</i>	<i>rubrum</i>	14,9,6	Large	Semi-mature	Good	\$7,223.00
284	Maple-Red	<i>Acer</i>	<i>rubrum</i>	18	Large	Mature	Fair	\$5,341.00
285	Maple-Red	<i>Acer</i>	<i>rubrum</i>	14	Large	Semi-mature	Good	\$4,523.00
286	Maple-Red	<i>Acer</i>	<i>rubrum</i>	21,10	Large	Mature	Good	\$12,485.00
287	Pine-Eastern White	<i>Pinus</i>	<i>strobus</i>	38	Large	Mature	Poor	\$15,174.00
288	Maple-Red	<i>Acer</i>	<i>rubrum</i>	16,5	Large	Mature	Fair	\$4,632.00
289	Pine-Eastern White	<i>Pinus</i>	<i>strobus</i>	12	Large	Semi-mature	Good	\$3,766.00
290	Pine-Eastern White	<i>Pinus</i>	<i>strobus</i>	12	Large	Semi-mature	Good	\$3,766.00
291	Oak-Black	<i>Quercus</i>	<i>velutina</i>	27,24	Large	Mature	Good	\$38,149.00
292	Pine-Eastern White	<i>Pinus</i>	<i>strobus</i>	36	Large	Mature	Fair	\$23,172.00
293	Oak-Black	<i>Quercus</i>	<i>velutina</i>	18	Large	Mature	Good	\$9,471.00
294	Maple-Red	<i>Acer</i>	<i>rubrum</i>	25	Large	Mature	Poor	\$6,181.00
295	Pine-Eastern White	<i>Pinus</i>	<i>strobus</i>	25	Large	Mature	Good	\$16,347.00
296	Pine-Eastern White	<i>Pinus</i>	<i>strobus</i>	36	Large	Mature	Good	\$32,441.00

Tree ID	Common Name	Genus	Species	DBH	Height Class	Age Class	Condition Class	Tree Asset Value
297	Pine-Eastern White	<i>Pinus</i>	<i>strobus</i>	34	Large	Mature	Good	\$29,386.00
298	Maple-Red	<i>Acer</i>	<i>rubrum</i>	14	Large	Semi-mature	Good	\$4,523.00
299	Maple-Red	<i>Acer</i>	<i>rubrum</i>	12	Large	Semi-mature	Good	\$3,323.00
300	Oak-Black	<i>Quercus</i>	<i>velutina</i>	24	Large	Mature	Good	\$16,838.00
301	Pine-Eastern White	<i>Pinus</i>	<i>strobus</i>	25	Large	Mature	Good	\$16,347.00
302	Maple-Red	<i>Acer</i>	<i>rubrum</i>	17	Large	Mature	Good	\$6,669.00
303	Pine-Eastern White	<i>Pinus</i>	<i>strobus</i>	35	Large	Mature	Good	\$30,925.00
304	Maple-Red	<i>Acer</i>	<i>rubrum</i>	12	Large	Semi-mature	Good	\$3,323.00
305	Maple-Red	<i>Acer</i>	<i>rubrum</i>	12	Large	Semi-mature	Fair	\$2,373.00
306	Pine-Eastern White	<i>Pinus</i>	<i>strobus</i>	12	Large	Semi-mature	Fair	\$2,690.00
307	Pine-Eastern White	<i>Pinus</i>	<i>strobus</i>	14	Large	Semi-mature	Good	\$5,126.00
308	Pine-Eastern White	<i>Pinus</i>	<i>strobus</i>	35	Large	Mature	Good	\$30,925.00
309	Maple-Red	<i>Acer</i>	<i>rubrum</i>	14	Large	Semi-mature	Good	\$4,523.00
310	Pine-Eastern White	<i>Pinus</i>	<i>strobus</i>	25	Large	Mature	Good	\$16,347.00
311	Maple-Red	<i>Acer</i>	<i>rubrum</i>	22,20	Large	Mature	Good	\$20,401.00
312	Maple-Red	<i>Acer</i>	<i>rubrum</i>	14	Large	Semi-mature	Poor	\$1,938.00
313	Maple-Red	<i>Acer</i>	<i>rubrum</i>	17	Large	Mature	Good	\$6,669.00
314	Maple-Red	<i>Acer</i>	<i>rubrum</i>	17	Large	Mature	Good	\$6,669.00
315	Maple-Red	<i>Acer</i>	<i>rubrum</i>	16	Large	Mature	Good	\$5,908.00
316	Maple-Red	<i>Acer</i>	<i>rubrum</i>	16,10,9,6	Large	Mature	Fair	\$7,797.00
317	Maple-Red	<i>Acer</i>	<i>rubrum</i>	12	Large	Semi-mature	Good	\$3,323.00
318	Maple-Red	<i>Acer</i>	<i>rubrum</i>	12	Large	Semi-mature	Good	\$3,323.00

Tree ID	Common Name	Genus	Species	DBH	Height Class	Age Class	Condition Class	Tree Asset Value
319	Pine-Eastern White	<i>Pinus</i>	<i>strobus</i>	14	Large	Semi-mature	Good	\$5,126.00
320	Tupelo-Black	<i>Nyssa</i>	<i>sylvatica</i>	12	Large	Semi-mature	Good	\$4,209.00
321	Maple-Red	<i>Acer</i>	<i>rubrum</i>	33	Large	Mature	Good	\$24,551.00
322	Maple-Red	<i>Acer</i>	<i>rubrum</i>	12,11,10,9	Large	Semi-mature	Good	\$10,293.00
323	Maple-Red	<i>Acer</i>	<i>rubrum</i>	12	Large	Semi-mature	Dead	...
324	Maple-Red	<i>Acer</i>	<i>rubrum</i>	15,13,10,9	Large	Semi-mature	Good	\$13,270.00
325	Tupelo-Black	<i>Nyssa</i>	<i>sylvatica</i>	13,6,4	Large	Semi-mature	Good	\$6,460.00
326	Maple-Red	<i>Acer</i>	<i>rubrum</i>	12,12	Large	Semi-mature	Good	\$6,646.00
327	Pine-Eastern White	<i>Pinus</i>	<i>strobus</i>	38	Large	Mature	Good	\$35,407.00
328	Maple-Red	<i>Acer</i>	<i>rubrum</i>	13	Large	Semi-mature	Fair	\$2,785.00
329	Maple-Red	<i>Acer</i>	<i>rubrum</i>	14	Large	Semi-mature	Good	\$4,523.00
330	Maple-Red	<i>Acer</i>	<i>rubrum</i>	34	Large	Mature	Poor	\$11,112.00
331	Pine-Eastern White	<i>Pinus</i>	<i>strobus</i>	50	Large	Mature	Dead	...
332	Tupelo-Black	<i>Nyssa</i>	<i>sylvatica</i>	15	Large	Semi-mature	Good	\$6,577.00
333	Maple-Red	<i>Acer</i>	<i>rubrum</i>	22,10,10	Large	Mature	Fair	\$11,275.00
334	Maple-Red	<i>Acer</i>	<i>rubrum</i>	12	Large	Semi-mature	Good	\$3,323.00
335	Cherry-Black	<i>Prunus</i>	<i>serotina</i>	12,8	Large	Semi-mature	Fair	\$2,057.00
336	Maple-Red	<i>Acer</i>	<i>rubrum</i>	13,10	Large	Semi-mature	Fair	\$4,434.00
337	Pine-Eastern White	<i>Pinus</i>	<i>strobus</i>	14	Large	Semi-mature	Good	\$5,126.00
338	Pine-Eastern White	<i>Pinus</i>	<i>strobus</i>	25	Large	Mature	Dead	...
339	Pine-Eastern White	<i>Pinus</i>	<i>strobus</i>	12	Large	Semi-mature	Good	\$3,766.00

Tree ID	Common Name	Genus	Species	DBH	Height Class	Age Class	Condition Class	Tree Asset Value
340	Pine-Eastern White	<i>Pinus</i>	<i>strobus</i>	28	Large	Mature	Good	\$20,506.00
341	Pine-Eastern White	<i>Pinus</i>	<i>strobus</i>	12	Large	Semi-mature	Good	\$3,766.00
342	Ash-White	<i>Fraxinus</i>	<i>americana</i>	12,10,8,7	Large	Semi-mature	Fair	\$4,315.00
343	Tupelo-Black	<i>Nyssa</i>	<i>sylvatica</i>	26	Large	Mature	Good	\$19,761.00
344	Maple-Red	<i>Acer</i>	<i>rubrum</i>	24	Large	Mature	Good	\$13,293.00
345	Maple-Red	<i>Acer</i>	<i>rubrum</i>	15,10	Large	Semi-mature	Good	\$7,500.00
346	Pine-Eastern White	<i>Pinus</i>	<i>strobus</i>	22	Large	Mature	Good	\$12,659.00
347	Ash-White	<i>Fraxinus</i>	<i>americana</i>	14	Large	Semi-mature	Poor	\$1,421.00
348	Maple-Red	<i>Acer</i>	<i>rubrum</i>	22,10	Large	Mature	Good	\$13,478.00
349	Maple-Red	<i>Acer</i>	<i>rubrum</i>	20	Large	Mature	Fair	\$6,594.00
350	Maple-Red	<i>Acer</i>	<i>rubrum</i>	12,11,11	Large	Semi-mature	Good	\$8,908.00
351	Oak-Black	<i>Quercus</i>	<i>velutina</i>	35	Large	Mature	Good	\$34,563.00
352	Oak-Black	<i>Quercus</i>	<i>velutina</i>	13	Large	Semi-mature	Good	\$4,940.00
353	Oak-Black	<i>Quercus</i>	<i>velutina</i>	29	Large	Mature	Good	\$24,585.00
354	Maple-Red	<i>Acer</i>	<i>rubrum</i>	15,12,13	Large	Semi-mature	Good	\$12,416.00
355	Ash-White	<i>Fraxinus</i>	<i>americana</i>	14	Large	Semi-mature	Poor	\$1,421.00
356	Maple-Red	<i>Acer</i>	<i>rubrum</i>	16	Large	Mature	Fair	\$4,220.00
357	Maple-Red	<i>Acer</i>	<i>rubrum</i>	23	Large	Mature	Fair	\$8,720.00
358	Maple-Red	<i>Acer</i>	<i>rubrum</i>	26	Large	Mature	Poor	\$6,686.00
359	Maple-Red	<i>Acer</i>	<i>rubrum</i>	13	Large	Semi-mature	Dead	...
360	Oak-White	<i>Quercus</i>	<i>alba</i>	29	Large	Mature	Good	\$24,585.00
361	Maple-Red	<i>Acer</i>	<i>rubrum</i>	16	Large	Mature	Fair	\$4,220.00
362	Birch-Yellow	<i>Betula</i>	<i>alleghaniensis</i>	12	Large	Semi-mature	Good	\$3,323.00
363	Maple-Red	<i>Acer</i>	<i>rubrum</i>	13,12,8	Large	Semi-mature	Good	\$8,700.00
364	Maple-Red	<i>Acer</i>	<i>rubrum</i>	27	Large	Mature	Fair	\$12,017.00
365	Maple-Red	<i>Acer</i>	<i>rubrum</i>	12,11,9,9	Large	Semi-mature	Fair	\$7,039.00
366	Maple-Red	<i>Acer</i>	<i>rubrum</i>	16,12	Large	Mature	Good	\$9,231.00

Tree ID	Common Name	Genus	Species	DBH	Height Class	Age Class	Condition Class	Tree Asset Value
367	Maple-Red	<i>Acer</i>	<i>rubrum</i>	23	Large	Mature	Fair	\$8,720.00
368	Maple-Red	<i>Acer</i>	<i>rubrum</i>	18	Large	Mature	Fair	\$5,341.00
369	Maple-Red	<i>Acer</i>	<i>rubrum</i>	17	Large	Mature	Good	\$6,669.00
370	Maple-Red	<i>Acer</i>	<i>rubrum</i>	12	Large	Semi-mature	Good	\$3,323.00
371	Maple-Red	<i>Acer</i>	<i>rubrum</i>	15	Large	Semi-mature	Good	\$5,192.00
372	Maple-Red	<i>Acer</i>	<i>rubrum</i>	15	Large	Semi-mature	Good	\$5,192.00
373	Maple-Red	<i>Acer</i>	<i>rubrum</i>	18	Large	Mature	Good	\$7,477.00
374	Pine-Eastern White	<i>Pinus</i>	<i>strobus</i>	14	Large	Semi-mature	Good	\$5,126.00
375	Oak-Black	<i>Quercus</i>	<i>velutina</i>	15	Large	Semi-mature	Good	\$6,577.00
376	Tupelo-Black	<i>Nyssa</i>	<i>sylvatica</i>	20	Large	Mature	Good	\$11,693.00
377	Tupelo-Black	<i>Nyssa</i>	<i>sylvatica</i>	21	Large	Mature	Good	\$12,891.00
378	Tupelo-Black	<i>Nyssa</i>	<i>sylvatica</i>	17	Large	Mature	Good	\$8,448.00
379	Tupelo-Black	<i>Nyssa</i>	<i>sylvatica</i>	12	Large	Semi-mature	Good	\$4,209.00
380	Tupelo-Black	<i>Nyssa</i>	<i>sylvatica</i>	20	Large	Mature	Good	\$11,693.00
381	Tupelo-Black	<i>Nyssa</i>	<i>sylvatica</i>	17	Large	Mature	Good	\$8,448.00
382	Tupelo-Black	<i>Nyssa</i>	<i>sylvatica</i>	18	Large	Mature	Good	\$9,471.00
383	Maple-Red	<i>Acer</i>	<i>rubrum</i>	18	Large	Mature	Good	\$7,477.00
384	Maple-Red	<i>Acer</i>	<i>rubrum</i>	12	Large	Semi-mature	Good	\$3,323.00
385	Maple-Red	<i>Acer</i>	<i>rubrum</i>	17	Large	Mature	Good	\$6,669.00
386	Pine-Eastern White	<i>Pinus</i>	<i>strobus</i>	40	Large	Mature	Dead	...
387	Maple-Red	<i>Acer</i>	<i>rubrum</i>	12	Large	Semi-mature	Good	\$3,323.00
388	Pine-Eastern White	<i>Pinus</i>	<i>strobus</i>	12	Large	Semi-mature	Good	\$3,766.00
389	Maple-Red	<i>Acer</i>	<i>rubrum</i>	14,8	Large	Semi-mature	Good	\$6,000.00
390	Maple-Red	<i>Acer</i>	<i>rubrum</i>	14,14	Large	Semi-mature	Good	\$9,046.00

Tree ID	Common Name	Genus	Species	DBH	Height Class	Age Class	Condition Class	Tree Asset Value
391	Maple-Red	<i>Acer</i>	<i>rubrum</i>	12	Large	Semi-mature	Fair	\$2,373.00
392	Maple-Red	<i>Acer</i>	<i>rubrum</i>	14	Large	Semi-mature	Good	\$4,523.00
393	Maple-Red	<i>Acer</i>	<i>rubrum</i>	12	Large	Semi-mature	Good	\$3,323.00
394	Maple-Red	<i>Acer</i>	<i>rubrum</i>	14	Large	Semi-mature	Fair	\$3,231.00
395	Maple-Red	<i>Acer</i>	<i>rubrum</i>	16	Large	Mature	Good	\$5,908.00
396	Maple-Red	<i>Acer</i>	<i>rubrum</i>	14	Large	Semi-mature	Fair	\$3,231.00
397	Tupelo-Black	<i>Nyssa</i>	<i>sylvatica</i>	12	Large	Semi-mature	Good	\$4,209.00
398	Tupelo-Black	<i>Nyssa</i>	<i>sylvatica</i>	12	Large	Semi-mature	Good	\$4,209.00
399	Pine-Eastern White	<i>Pinus</i>	<i>strobus</i>	31	Large	Mature	Good	\$24,635.00
400	Maple-Red	<i>Acer</i>	<i>rubrum</i>	13	Large	Semi-mature	Poor	\$1,671.00
401	Tupelo-Black	<i>Nyssa</i>	<i>sylvatica</i>	14,9	Large	Semi-mature	Good	\$8,097.00
402	Pine-Eastern White	<i>Pinus</i>	<i>strobus</i>	14	Large	Semi-mature	Good	\$5,126.00
403	Maple-Red	<i>Acer</i>	<i>rubrum</i>	18	Large	Mature	Good	\$7,477.00
404	Maple-Red	<i>Acer</i>	<i>rubrum</i>	17	Large	Mature	Good	\$6,669.00
405	Maple-Red	<i>Acer</i>	<i>rubrum</i>	12,10	Large	Semi-mature	Fair	\$4,022.00
406	Maple-Red	<i>Acer</i>	<i>rubrum</i>	15,13,12,8	Large	Semi-mature	Poor	\$5,954.00
407	Birch-Sweet	<i>Betula</i>	<i>lenta</i>	12	Large	Semi-mature	Good	\$1,994.00
408	Maple-Red	<i>Acer</i>	<i>rubrum</i>	20	Large	Mature	Good	\$9,231.00
409	Maple-Red	<i>Acer</i>	<i>rubrum</i>	16	Large	Mature	Fair	\$4,220.00
410	Maple-Red	<i>Acer</i>	<i>rubrum</i>	17	Large	Mature	Good	\$6,669.00
411	Maple-Red	<i>Acer</i>	<i>rubrum</i>	17,14	Large	Mature	Good	\$11,193.00
412	Maple-Red	<i>Acer</i>	<i>rubrum</i>	12	Large	Semi-mature	Good	\$3,323.00
413	Maple-Red	<i>Acer</i>	<i>rubrum</i>	12	Large	Semi-mature	Poor	\$1,424.00
414	Maple-Red	<i>Acer</i>	<i>rubrum</i>	22	Large	Mature	Fair	\$7,978.00
415	Maple-Red	<i>Acer</i>	<i>rubrum</i>	18	Large	Mature	Good	\$7,477.00

Tree ID	Common Name	Genus	Species	DBH	Height Class	Age Class	Condition Class	Tree Asset Value
416	Pine-Eastern White	<i>Pinus</i>	<i>strobus</i>	12	Large	Semi-mature	Good	\$3,766.00
417	Maple-Red	<i>Acer</i>	<i>rubrum</i>	24	Large	Mature	Good	\$13,293.00
418	Maple-Red	<i>Acer</i>	<i>rubrum</i>	20	Large	Mature	Good	\$9,231.00
419	Maple-Red	<i>Acer</i>	<i>rubrum</i>	13,11	Large	Semi-mature	Good	\$6,692.00
420	Maple-Red	<i>Acer</i>	<i>rubrum</i>	22,13	Large	Mature	Good	\$15,070.00
421	Maple-Red	<i>Acer</i>	<i>rubrum</i>	16	Large	Mature	Dead	...
422	Maple-Red	<i>Acer</i>	<i>rubrum</i>	26,24	Large	Mature	Good	\$28,894.00
423	Maple-Red	<i>Acer</i>	<i>rubrum</i>	24	Large	Mature	Good	\$13,293.00
424	Maple-Red	<i>Acer</i>	<i>rubrum</i>	17,16,12	Large	Mature	Good	\$15,901.00
425	Maple-Red	<i>Acer</i>	<i>rubrum</i>	21,20,14,8	Large	Mature	Good	\$25,409.00
426	Maple-Red	<i>Acer</i>	<i>rubrum</i>	15	Large	Semi-mature	Good	\$5,192.00
427	Maple-Red	<i>Acer</i>	<i>rubrum</i>	19,12,11,6	Large	Mature	Fair	\$10,913.00
428	Maple-Red	<i>Acer</i>	<i>rubrum</i>	15	Large	Semi-mature	Good	\$5,192.00
429	Maple-Red	<i>Acer</i>	<i>rubrum</i>	26	Large	Mature	Good	\$15,601.00
430	Maple-Red	<i>Acer</i>	<i>rubrum</i>	12,10,1,8,8	Large	Semi-mature	Good	\$8,608.00
431	Maple-Red	<i>Acer</i>	<i>rubrum</i>	14	Large	Semi-mature	Good	\$4,523.00
432	Oak-White	<i>Quercus</i>	<i>alba</i>	12	Large	Semi-mature	Good	\$4,209.00
433	Oak-Black	<i>Quercus</i>	<i>velutina</i>	13	Large	Semi-mature	Dead	...
434	Oak-Northern Red	<i>Quercus</i>	<i>rubra</i>	16	Large	Semi-mature	Good	\$7,483.00
435	Tupelo-Black	<i>Nyssa</i>	<i>sylvatica</i>	13	Large	Semi-mature	Good	\$4,940.00
436	Oak-Black	<i>Quercus</i>	<i>velutina</i>	13,10	Large	Semi-mature	Good	\$7,863.00
437	Maple-Red	<i>Acer</i>	<i>rubrum</i>	19,18,18	Large	Mature	Fair	\$16,633.00
438	Tupelo-Black	<i>Nyssa</i>	<i>sylvatica</i>	12	Large	Semi-mature	Good	\$4,209.00
439	Tupelo-Black	<i>Nyssa</i>	<i>sylvatica</i>	12	Large	Semi-mature	Good	\$4,209.00
440	Tupelo-Black	<i>Nyssa</i>	<i>sylvatica</i>	13	Large	Semi-mature	Good	\$4,940.00
441	Oak-Black	<i>Quercus</i>	<i>velutina</i>	23	Large	Mature	Good	\$15,464.00
442	Tupelo-Black	<i>Nyssa</i>	<i>sylvatica</i>	13	Large	Semi-mature	Good	\$4,940.00

Tree ID	Common Name	Genus	Species	DBH	Height Class	Age Class	Condition Class	Tree Asset Value
443	Tupelo-Black	<i>Nyssa</i>	<i>sylvatica</i>	14	Large	Semi-mature	Good	\$5,729.00
444	Tupelo-Black	<i>Nyssa</i>	<i>sylvatica</i>	15	Large	Semi-mature	Good	\$6,577.00
445	Tupelo-Black	<i>Nyssa</i>	<i>sylvatica</i>	12	Large	Semi-mature	Good	\$4,209.00
446	Tupelo-Black	<i>Nyssa</i>	<i>sylvatica</i>	15	Large	Semi-mature	Good	\$6,577.00
447	Tupelo-Black	<i>Nyssa</i>	<i>sylvatica</i>	13	Large	Semi-mature	Good	\$4,940.00
448	Tupelo-Black	<i>Nyssa</i>	<i>sylvatica</i>	12	Large	Semi-mature	Good	\$4,209.00
449	Tupelo-Black	<i>Nyssa</i>	<i>sylvatica</i>	13	Large	Semi-mature	Good	\$4,940.00
450	Tupelo-Black	<i>Nyssa</i>	<i>sylvatica</i>	14	Large	Semi-mature	Good	\$5,729.00
451	Pine-Eastern White	<i>Pinus</i>	<i>strobus</i>	25	Large	Mature	Good	\$16,347.00
452	Maple-Red	<i>Acer</i>	<i>rubrum</i>	20,12,12,8	Large	Mature	Good	\$17,355.00
453	Maple-Red	<i>Acer</i>	<i>rubrum</i>	18,16,14,9	Large	Mature	Good	\$19,778.00
454	Maple-Red	<i>Acer</i>	<i>rubrum</i>	15,10	Large	Semi-mature	Good	\$7,500.00
455	Maple-Red	<i>Acer</i>	<i>rubrum</i>	16,13,8	Large	Mature	Good	\$11,285.00
456	Oak-Black	<i>Quercus</i>	<i>velutina</i>	23,10	Large	Mature	Good	\$18,387.00
457	Maple-Red	<i>Acer</i>	<i>rubrum</i>	22	Large	Mature	Good	\$11,170.00
458	Maple-Red	<i>Acer</i>	<i>rubrum</i>	18,13,12	Large	Mature	Fair	\$10,500.00
459	Pine-Eastern White	<i>Pinus</i>	<i>strobus</i>	13	Large	Semi-mature	Good	\$4,420.00
460	Cherry-Black	<i>Prunus</i>	<i>serotina</i>	12	Large	Semi-mature	Poor	\$854.00
461	Pine-Eastern White	<i>Pinus</i>	<i>strobus</i>	27	Large	Mature	Good	\$19,067.00
462	Pine-Eastern White	<i>Pinus</i>	<i>strobus</i>	31	Large	Mature	Good	\$24,635.00
463	Tupelo-Black	<i>Nyssa</i>	<i>sylvatica</i>	14	Large	Semi-mature	Good	\$5,729.00
464	Tupelo-Black	<i>Nyssa</i>	<i>sylvatica</i>	14	Large	Semi-mature	Poor	\$2,455.00
465	Pine-Eastern White	<i>Pinus</i>	<i>strobus</i>	24	Large	Mature	Good	\$15,065.00

Tree ID	Common Name	Genus	Species	DBH	Height Class	Age Class	Condition Class	Tree Asset Value
466	Maple-Red	<i>Acer</i>	<i>rubrum</i>	21,19,18,10	Large	Mature	Good	\$28,294.00
467	Tupelo-Black	<i>Nyssa</i>	<i>sylvatica</i>	12,11	Large	Semi-mature	Dead	...
468	Maple-Red	<i>Acer</i>	<i>rubrum</i>	22	Large	Mature	Poor	\$4,787.00
469	Maple-Red	<i>Acer</i>	<i>rubrum</i>	21	Large	Mature	Poor	\$4,361.00
470	Oak-Black	<i>Quercus</i>	<i>velutina</i>	29	Large	Mature	Good	\$24,585.00
471	Pine-Eastern White	<i>Pinus</i>	<i>strobus</i>	32	Large	Mature	Good	\$26,241.00
472	Maple-Red	<i>Acer</i>	<i>rubrum</i>	23	Large	Mature	Fair	\$8,720.00
473	Oak-Black	<i>Quercus</i>	<i>velutina</i>	27,25	Large	Mature	Good	\$39,582.00
474	Pine-Eastern White	<i>Pinus</i>	<i>strobus</i>	12	Large	Semi-mature	Good	\$3,766.00
475	Maple-Red	<i>Acer</i>	<i>rubrum</i>	15	Large	Semi-mature	Good	\$5,192.00
476	Maple-Red	<i>Acer</i>	<i>rubrum</i>	18	Large	Mature	Good	\$7,477.00
477	Maple-Red	<i>Acer</i>	<i>rubrum</i>	21	Large	Mature	Poor	\$4,361.00
478	Maple-Red	<i>Acer</i>	<i>rubrum</i>	18	Large	Mature	Good	\$7,477.00
479	Maple-Red	<i>Acer</i>	<i>rubrum</i>	12,11	Large	Semi-mature	Good	\$6,115.00
480	Maple-Red	<i>Acer</i>	<i>rubrum</i>	21	Large	Mature	Fair	\$7,269.00
481	Maple-Red	<i>Acer</i>	<i>rubrum</i>	14	Large	Semi-mature	Good	\$4,523.00
482	Maple-Red	<i>Acer</i>	<i>rubrum</i>	12	Large	Semi-mature	Poor	\$1,424.00
483	Maple-Red	<i>Acer</i>	<i>rubrum</i>	17	Large	Mature	Good	\$6,669.00
484	Maple-Red	<i>Acer</i>	<i>rubrum</i>	20	Large	Mature	Good	\$9,231.00
485	Maple-Red	<i>Acer</i>	<i>rubrum</i>	25,15	Large	Mature	Fair	\$14,012.00
486	Maple-Red	<i>Acer</i>	<i>rubrum</i>	13,11	Large	Semi-mature	Good	\$6,692.00
487	Maple-Red	<i>Acer</i>	<i>rubrum</i>	26,23	Large	Mature	Good	\$27,810.00
488	Maple-Red	<i>Acer</i>	<i>rubrum</i>	25,10	Large	Mature	Good	\$16,732.00
489	Maple-Red	<i>Acer</i>	<i>rubrum</i>	12,10	Large	Semi-mature	Good	\$5,631.00
490	Maple-Red	<i>Acer</i>	<i>rubrum</i>	21	Large	Mature	Poor	\$4,361.00
491	Maple-Red	<i>Acer</i>	<i>rubrum</i>	28,12	Large	Mature	Good	\$21,417.00
492	Pine-Eastern White	<i>Pinus</i>	<i>strobus</i>	12	Large	Semi-mature	Good	\$3,766.00
493	Maple-Red	<i>Acer</i>	<i>rubrum</i>	14	Large	Semi-mature	Dead	...
494	Oak-Black	<i>Quercus</i>	<i>velutina</i>	26	Large	Mature	Good	\$19,761.00
495	Oak-Black	<i>Quercus</i>	<i>velutina</i>	27	Large	Mature	Good	\$21,311.00

Tree ID	Common Name	Genus	Species	DBH	Height Class	Age Class	Condition Class	Tree Asset Value
496	Tupelo-Black	<i>Nyssa</i>	<i>sylvatica</i>	12	Large	Semi-mature	Good	\$4,209.00
497	Maple-Red	<i>Acer</i>	<i>rubrum</i>	12	Large	Semi-mature	Poor	\$1,424.00
498	Maple-Red	<i>Acer</i>	<i>rubrum</i>	18,14,14,8	Large	Mature	Poor	\$7,714.00
499	Maple-Red	<i>Acer</i>	<i>rubrum</i>	13,8	Large	Semi-mature	Good	\$5,377.00
500	Oak-White	<i>Quercus</i>	<i>alba</i>	24	Large	Mature	Good	\$16,838.00
501	Oak-Northern Red	<i>Quercus</i>	<i>rubra</i>	30	Large	Mature	Good	\$26,310.00
502	Oak-Northern Red	<i>Quercus</i>	<i>rubra</i>	26,13	Large	Mature	Fair	\$17,644.00
503	Maple-Red	<i>Acer</i>	<i>rubrum</i>	17	Large	Mature	Good	\$6,669.00
504	Oak-White	<i>Quercus</i>	<i>alba</i>	19	Large	Semi-mature	Fair	\$7,538.00
505	Oak-Black	<i>Quercus</i>	<i>velutina</i>	25	Large	Mature	Fair	\$13,050.00
506	Hickory-Mockernut	<i>Carya</i>	<i>tomentosa</i>	12	Large	Semi-mature	Good	\$3,323.00
507	Cherry-Black	<i>Prunus</i>	<i>serotina</i>	12	Large	Semi-mature	Good	\$1,994.00
508	Maple-Red	<i>Acer</i>	<i>rubrum</i>	23,21,12	Large	Mature	Good	\$25,710.00
509	Oak-Black	<i>Quercus</i>	<i>velutina</i>	12	Large	Semi-mature	Good	\$4,209.00
510	Maple-Red	<i>Acer</i>	<i>rubrum</i>	19,19	Large	Mature	Good	\$16,663.00
511	Oak-Black	<i>Quercus</i>	<i>velutina</i>	24	Large	Mature	Good	\$16,838.00
512	Maple-Red	<i>Acer</i>	<i>rubrum</i>	17,8	Large	Mature	Good	\$8,146.00
513	Maple-Red	<i>Acer</i>	<i>rubrum</i>	20,14	Large	Mature	Fair	\$9,825.00
514	Maple-Red	<i>Acer</i>	<i>rubrum</i>	15	Large	Semi-mature	Good	\$5,192.00
515	Maple-Red	<i>Acer</i>	<i>rubrum</i>	12,9,8	Large	Semi-mature	Good	\$6,669.00
516	Hickory-Mockernut	<i>Carya</i>	<i>tomentosa</i>	20	Large	Mature	Good	\$9,231.00
517	Oak-Black	<i>Quercus</i>	<i>velutina</i>	20	Large	Mature	Dead	...
518	Oak-Northern Red	<i>Quercus</i>	<i>rubra</i>	26	Large	Mature	Good	\$19,761.00
519	Hickory-Mockernut	<i>Carya</i>	<i>tomentosa</i>	20	Large	Mature	Fair	\$6,594.00
520	Hickory-Mockernut	<i>Carya</i>	<i>tomentosa</i>	18	Large	Mature	Fair	\$5,341.00

Tree ID	Common Name	Genus	Species	DBH	Height Class	Age Class	Condition Class	Tree Asset Value
521	Oak-Northern Red	<i>Quercus</i>	<i>rubra</i>	34	Large	Mature	Good	\$32,843.00
522	Oak-Northern Red	<i>Quercus</i>	<i>rubra</i>	20	Large	Mature	Good	\$11,693.00
523	Hickory-Mockernut	<i>Carya</i>	<i>tomentosa</i>	12	Large	Semi-mature	Good	\$3,323.00
524	Oak-White	<i>Quercus</i>	<i>alba</i>	20	Large	Mature	Good	\$11,693.00
525	Pine-Eastern White	<i>Pinus</i>	<i>strobus</i>	13	Large	Semi-mature	Good	\$4,420.00
526	Oak-Northern Red	<i>Quercus</i>	<i>rubra</i>	34	Large	Mature	Good	\$32,843.00
527	Oak-Northern Red	<i>Quercus</i>	<i>rubra</i>	18	Large	Semi-mature	Fair	\$6,765.00
528	Hickory-Mockernut	<i>Carya</i>	<i>tomentosa</i>	17	Large	Mature	Good	\$6,669.00
529	Ash-White	<i>Fraxinus</i>	<i>americana</i>	15	Large	Semi-mature	Good	\$3,808.00
530	Beech-American	<i>Fagus</i>	<i>grandifolia</i>	13	Large	Semi-mature	Good	\$4,940.00
531	Hickory-Mockernut	<i>Carya</i>	<i>tomentosa</i>	18	Large	Mature	Good	\$7,477.00
532	Hickory-Mockernut	<i>Carya</i>	<i>tomentosa</i>	14	Large	Semi-mature	Good	\$4,523.00
533	Oak-Northern Red	<i>Quercus</i>	<i>rubra</i>	45	Large	Mature	Good	\$50,390.00
534	Maple-Red	<i>Acer</i>	<i>rubrum</i>	12	Large	Semi-mature	Good	\$3,323.00
535	Maple-Red	<i>Acer</i>	<i>rubrum</i>	18	Large	Mature	Fair	\$5,341.00
536	Oak-Black	<i>Quercus</i>	<i>velutina</i>	30	Large	Mature	Good	\$26,310.00
537	Oak-Northern Red	<i>Quercus</i>	<i>rubra</i>	14	Large	Semi-mature	Good	\$5,729.00
538	Oak-Black	<i>Quercus</i>	<i>velutina</i>	24	Large	Mature	Good	\$16,838.00
539	Oak-Northern Red	<i>Quercus</i>	<i>rubra</i>	34	Large	Mature	Good	\$32,843.00
540	Hickory-Mockernut	<i>Carya</i>	<i>tomentosa</i>	12	Large	Semi-mature	Good	\$3,323.00

Tree ID	Common Name	Genus	Species	DBH	Height Class	Age Class	Condition Class	Tree Asset Value
541	Oak-Northern Red	<i>Quercus</i>	<i>rubra</i>	35	Large	Mature	Good	\$34,563.00
542	Maple-Red	<i>Acer</i>	<i>rubrum</i>	13	Large	Semi-mature	Good	\$3,900.00
543	Oak-Northern Red	<i>Quercus</i>	<i>rubra</i>	24	Large	Mature	Dead	...
544	Hickory-Mockernut	<i>Carya</i>	<i>tomentosa</i>	12	Large	Semi-mature	Good	\$3,323.00
545	Maple-Red	<i>Acer</i>	<i>rubrum</i>	18,14,14,8,6	Large	Mature	Fair	\$13,451.00
546	Maple-Red	<i>Acer</i>	<i>rubrum</i>	12	Large	Semi-mature	Fair	\$2,373.00
547	Oak-Northern Red	<i>Quercus</i>	<i>rubra</i>	17	Large	Semi-mature	Good	\$8,448.00
548	Maple-Red	<i>Acer</i>	<i>rubrum</i>	14,13	Large	Semi-mature	Good	\$8,423.00
549	Oak-Black	<i>Quercus</i>	<i>velutina</i>	16	Large	Semi-mature	Good	\$7,483.00
550	Maple-Red	<i>Acer</i>	<i>rubrum</i>	15,10	Large	Semi-mature	Poor	\$3,214.00
551	Maple-Red	<i>Acer</i>	<i>rubrum</i>	17	Large	Mature	Good	\$6,669.00
552	Hickory-Mockernut	<i>Carya</i>	<i>tomentosa</i>	13	Large	Semi-mature	Fair	\$2,785.00
553	Oak-Northern Red	<i>Quercus</i>	<i>rubra</i>	52	Large	Mature	Good	\$59,984.00
554	Oak-Northern Red	<i>Quercus</i>	<i>rubra</i>	29,22,22,15	Large	Mature	Good	\$59,460.00
555	Oak-Northern Red	<i>Quercus</i>	<i>rubra</i>	14,11	Large	Semi-mature	Fair	\$6,619.00
556	Oak-Northern Red	<i>Quercus</i>	<i>rubra</i>	18	Large	Semi-mature	Good	\$9,471.00
557	Oak-Northern Red	<i>Quercus</i>	<i>rubra</i>	23	Large	Mature	Good	\$15,464.00
558	Oak-Northern Red	<i>Quercus</i>	<i>rubra</i>	26	Large	Mature	Good	\$19,761.00
559	Oak-Northern Red	<i>Quercus</i>	<i>rubra</i>	17	Large	Semi-mature	Good	\$8,448.00

Tree ID	Common Name	Genus	Species	DBH	Height Class	Age Class	Condition Class	Tree Asset Value
560	Maple-Red	<i>Acer</i>	<i>rubrum</i>	13	Large	Semi-mature	Good	\$3,900.00
561	Maple-Red	<i>Acer</i>	<i>rubrum</i>	16	Large	Mature	Poor	\$2,532.00
562	Maple-Red	<i>Acer</i>	<i>rubrum</i>	14	Large	Semi-mature	Fair	\$3,231.00
563	Oak-Northern Red	<i>Quercus</i>	<i>rubra</i>	38	Large	Mature	Good	\$39,573.00
564	Oak-Northern Red	<i>Quercus</i>	<i>rubra</i>	35	Large	Mature	Good	\$34,563.00
565	Maple-Red	<i>Acer</i>	<i>rubrum</i>	12,8	Large	Semi-mature	Good	\$4,800.00
566	Maple-Red	<i>Acer</i>	<i>rubrum</i>	12	Large	Semi-mature	Poor	\$1,424.00
567	Oak-Northern Red	<i>Quercus</i>	<i>rubra</i>	38	Large	Mature	Fair	\$28,266.00
568	Oak-Northern Red	<i>Quercus</i>	<i>rubra</i>	31	Large	Mature	Good	\$27,533.00
569	Oak-Northern Red	<i>Quercus</i>	<i>rubra</i>	46	Large	Mature	Good	\$51,835.00
570	Maple-Red	<i>Acer</i>	<i>rubrum</i>	14,12	Large	Semi-mature	Poor	\$3,362.00
571	Maple-Red	<i>Acer</i>	<i>rubrum</i>	12	Large	Semi-mature	Good	\$3,323.00
572	Ash-White	<i>Fraxinus</i>	<i>americana</i>	24	Large	Mature	Good	\$9,748.00
573	Maple-Red	<i>Acer</i>	<i>rubrum</i>	13	Large	Semi-mature	Fair	\$2,785.00