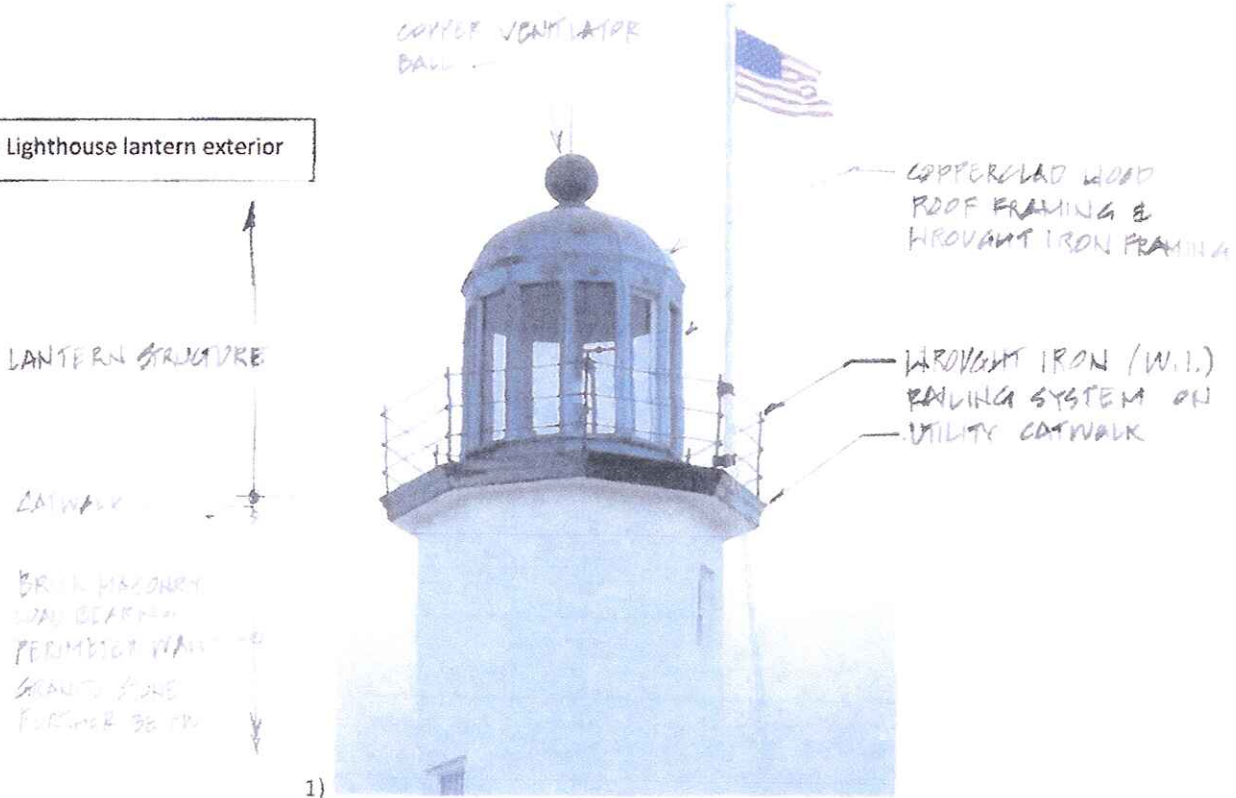


SCITUATE LIGHTHOUSE – LANTERN STRUCTURE  
PHOTOS OF EXISTING CONDITIONS

1) Scituate Lighthouse lantern exterior



Interior view Lighthouse lantern windows and roof framing

DETERIORATED WOOD ROOF RATTERS

DETERIORATED TIMBER BEAMS

WINDOW SILL

CONG SLAB FLOOR



Interior view Lighthouse lantern windows and concrete floor slab

SCITUATE LIGHTHOUSE – LANTERN STRUCTURE  
PHOTOS OF EXISTING CONDITIONS

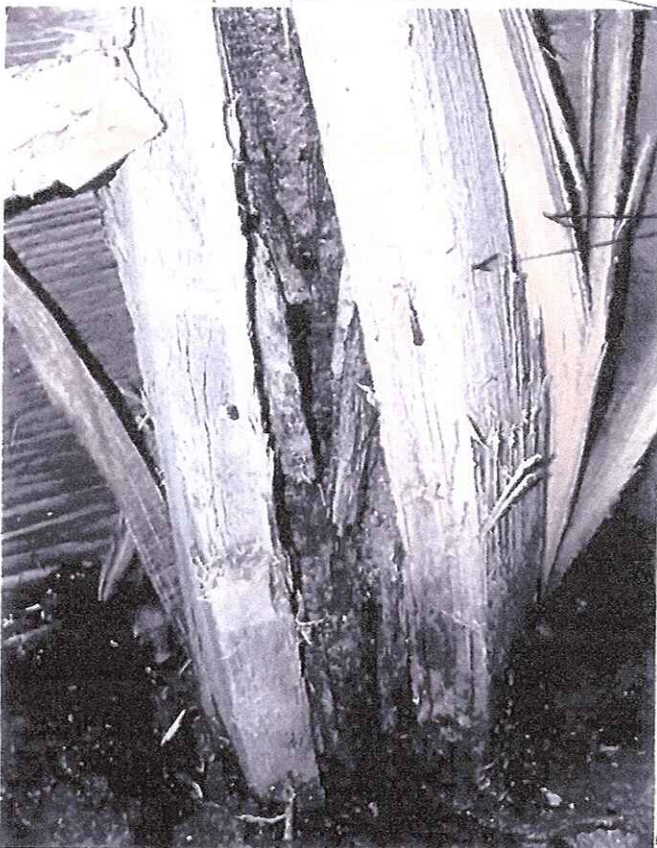


Wrought Iron (W.I.) columns severely deteriorated.

CONCRETE SLAB

W.I. POST & DEBRIS

4)



WROUGHT IRON  $\frac{1}{2}$ " CRUMBLING COLUMN.

WOOD TRIM DETERIORATED  
& BUCKLING E.S. OF # COLUMN TYP.

Close-up view of the severely deteriorated column- no capacity remaining.

5)

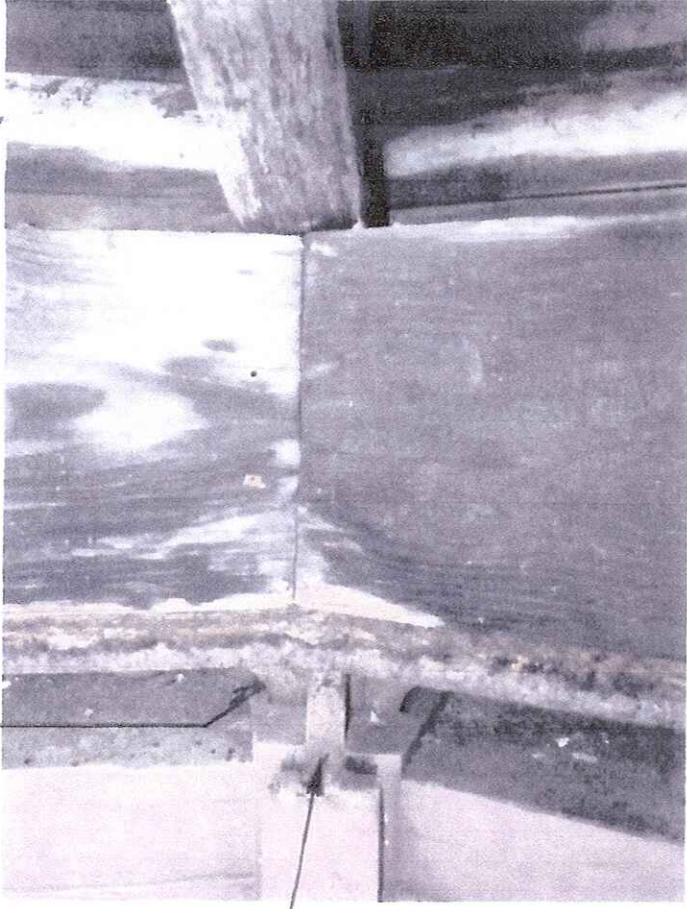


**SCITUATE LIGHTHOUSE – LANTERN STRUCTURE  
PHOTOS OF EXISTING CONDITIONS**

Interior views (above the windows) of structural framing wrought iron (W.I.) & wood roof framing

WOOD ROOF PLANKS W/ WATER STAINS

TIMBER R BM WATER STAINED  
W/ INTERNAL DRY ROT

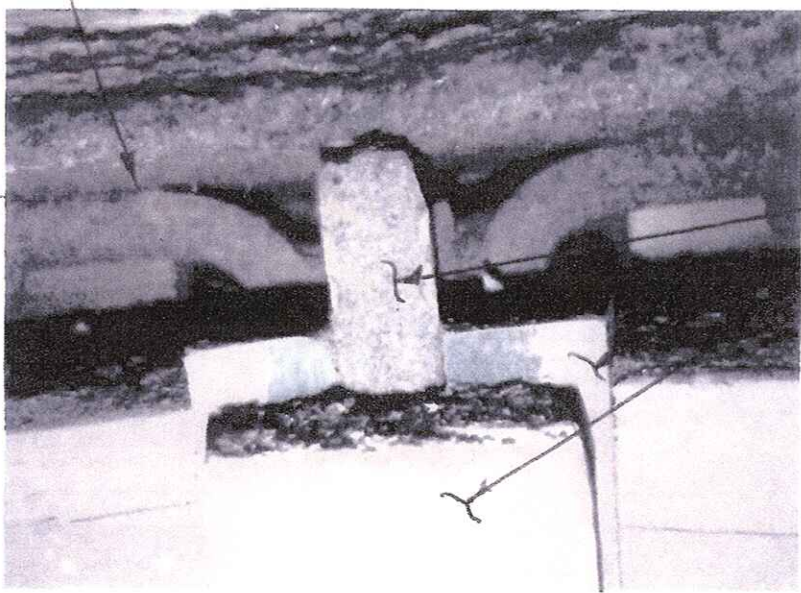


6)

TOP CONTINUOUS RING & RITE W.I.  
DETERIORATED, RUST PUSHING UP  
ON TIMBER BM

BENT W.I. CONNECTION W/ THREE BOLTS

WINDOW FRAME HEAD



7)

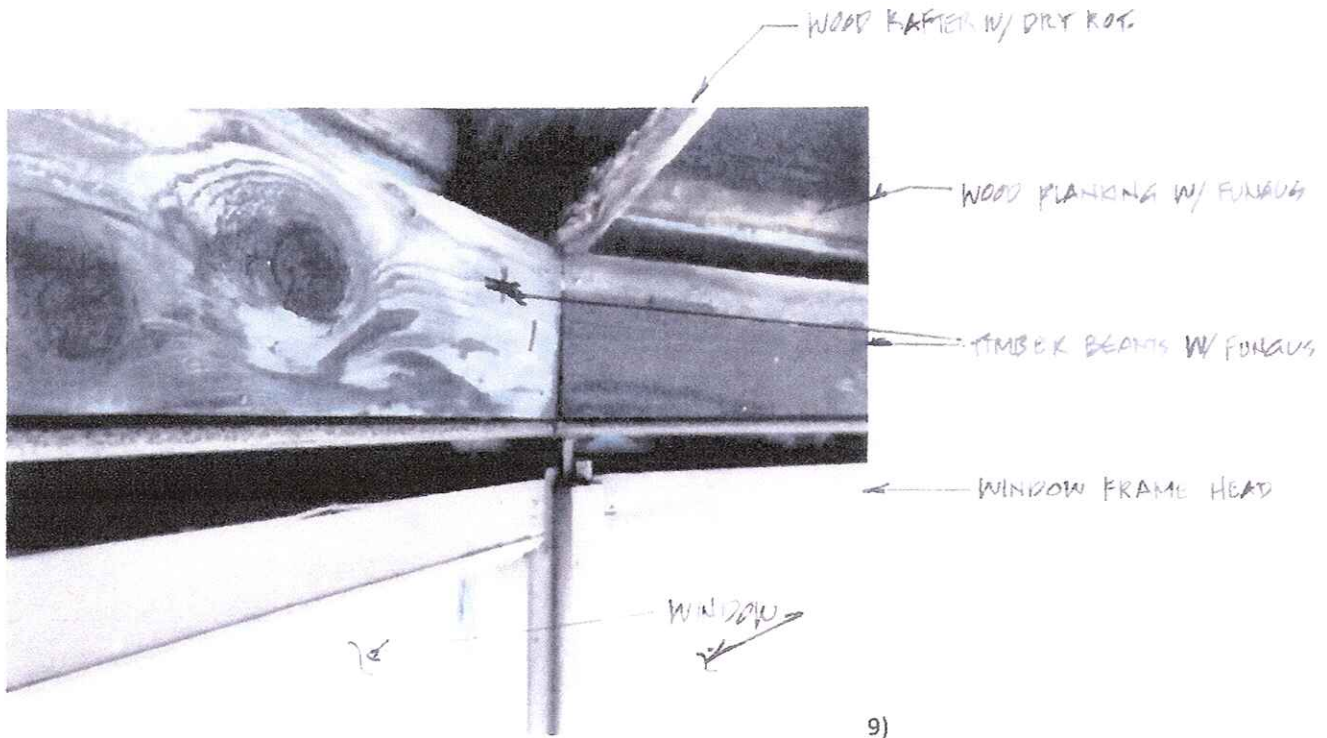
W.I. VERTICAL COLUMN  
W/ WOOD TRIM BELOW ALL  
AROUND

SCITUATE LIGHTHOUSE – LANTERN STRUCTURE  
PHOTOS OF EXISTING CONDITIONS

Roof wood framing members – deterioration.



8)

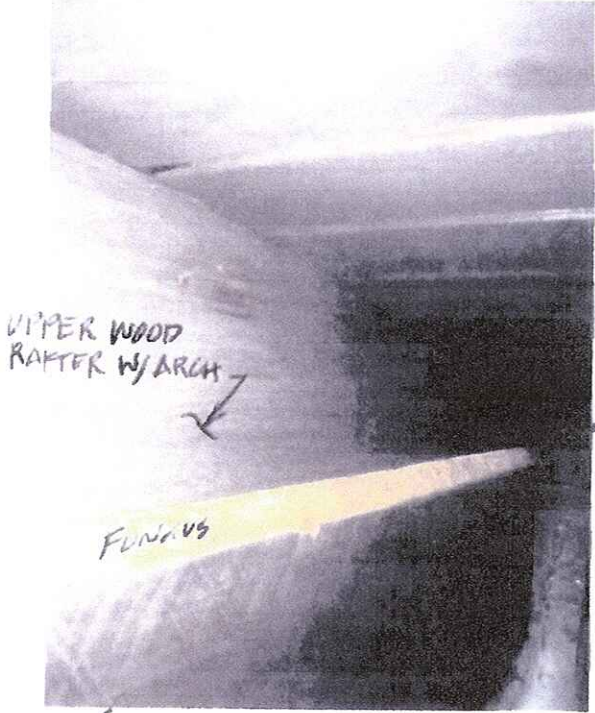


9)



SCITUATE LIGHTHOUSE – LANTERN STRUCTURE  
PHOTOS OF EXISTING CONDITIONS

Roof wood framing members – deterioration.



WOOD PLANKING

UPPER WOOD RAFTER W/ ARCH

FUNGUS

WOOD RAFTERS STACKED W/ FUNGUS GROWTH DETERIORATING & TWISTING RAFTER

10)

LOWER RAFTER



TIMBER BEAM W/ WATER STAINS

11)



RAFTER W/ DRY ROT

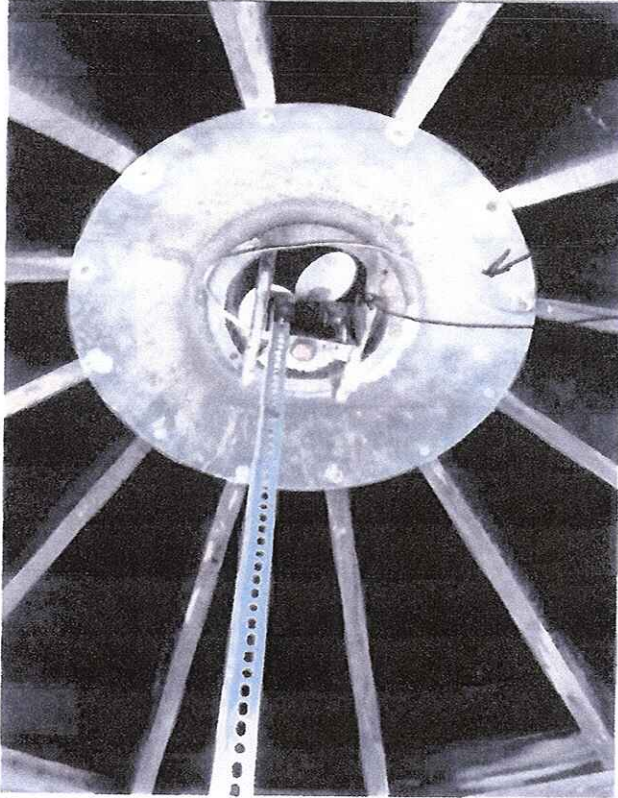
WOOD ROOF PLANKING W/ WATER STAINS & FUNGUS

12)

W. I. R. S. E.

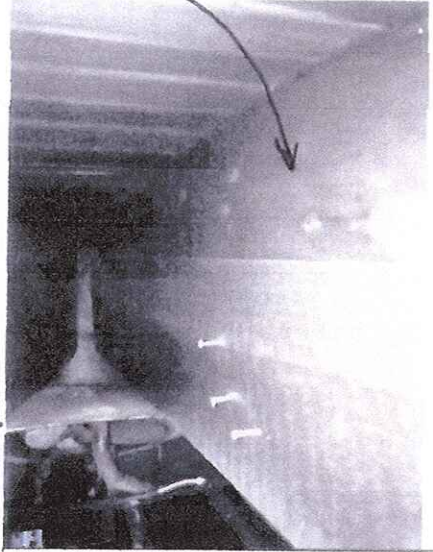
SCITUATE LIGHTHOUSE – LANTERN STRUCTURE  
PHOTOS OF EXISTING CONDITIONS

Interior views of roof ventilator fan and its connection to the wood roof rafters.

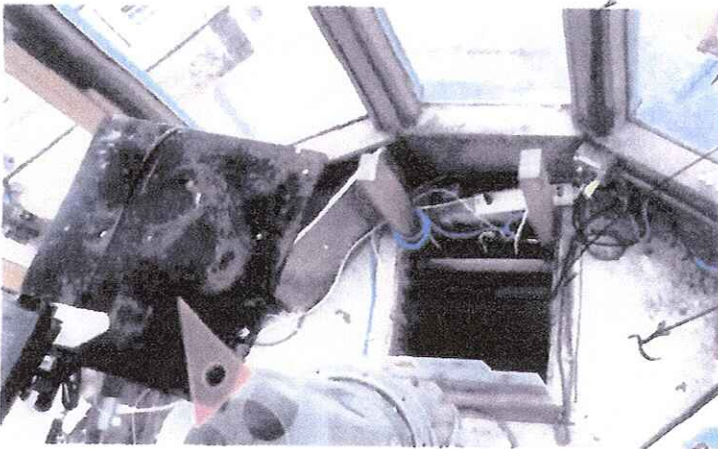


WOOD RAFTERS  
VENTILATOR SUPPORT  
CYLINDER &  
FAN

13)



14) interior view between rafters  
looking at ventilator shaft and fan that  
is supported by roof rafters



WINDOWS W/ W.L.  
COLUMNS BETWEEN.

SCUTTLE

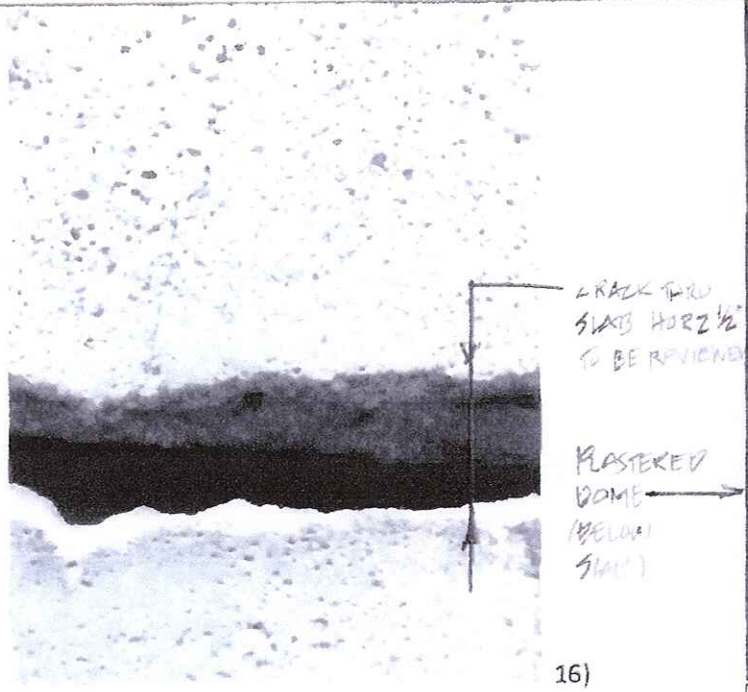
CONCRETE SLAB

15) Interior view of the lantern floor slab and

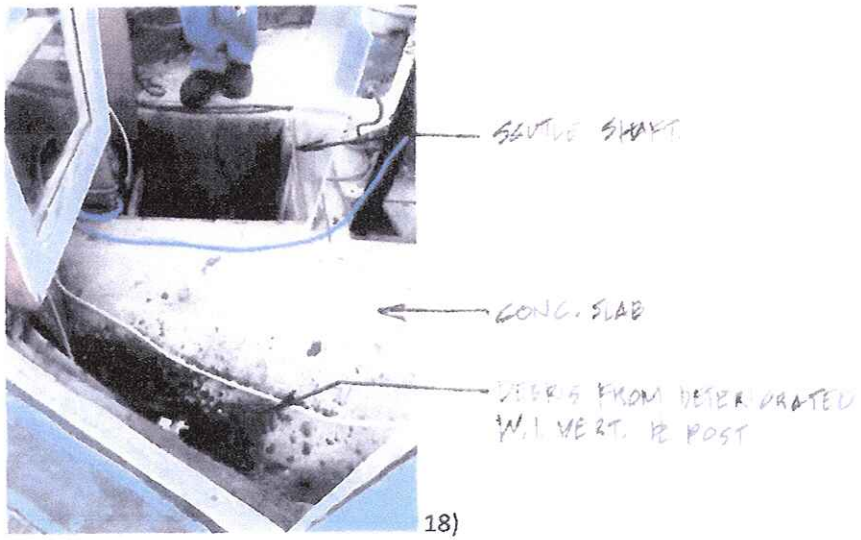


**SCITUATE LIGHTHOUSE – LANTERN STRUCTURE  
PHOTOS OF EXISTING CONDITIONS**

Photos of scuttle - interior side of scuttle shaft, showing crack thru the concrete dome structure.



Side view of scuttle with ladder; Dome shaped plastered ceiling of space below the lantern seen on left side.



SCITUATE LIGHTHOUSE – LANTERN STRUCTURE  
PHOTOS OF EXISTING CONDITIONS

Window sills - deteriorated both interior wood & exterior copper cladding.



19)

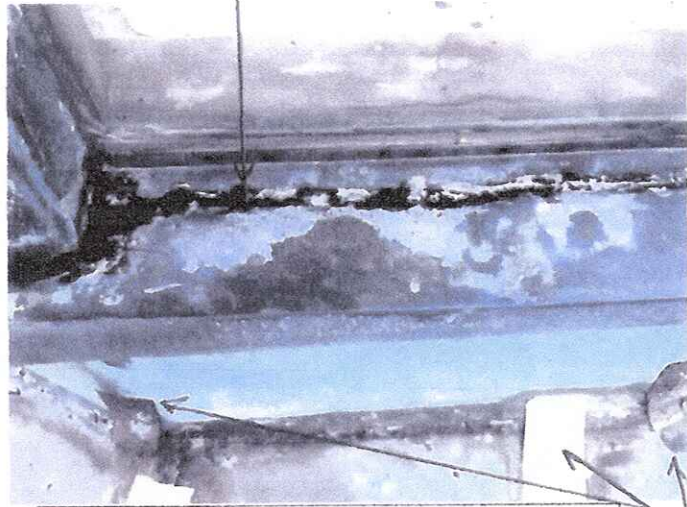
Interior window wood sill and column trim deteriorated



20)

Exterior window sill and column copper cladding deteriorated.

*DETERIORATED COPPER CLADDING  
THIN WOOD SILL W/ DRY ROT*



21) Exterior window sill copper cladding deteriorated

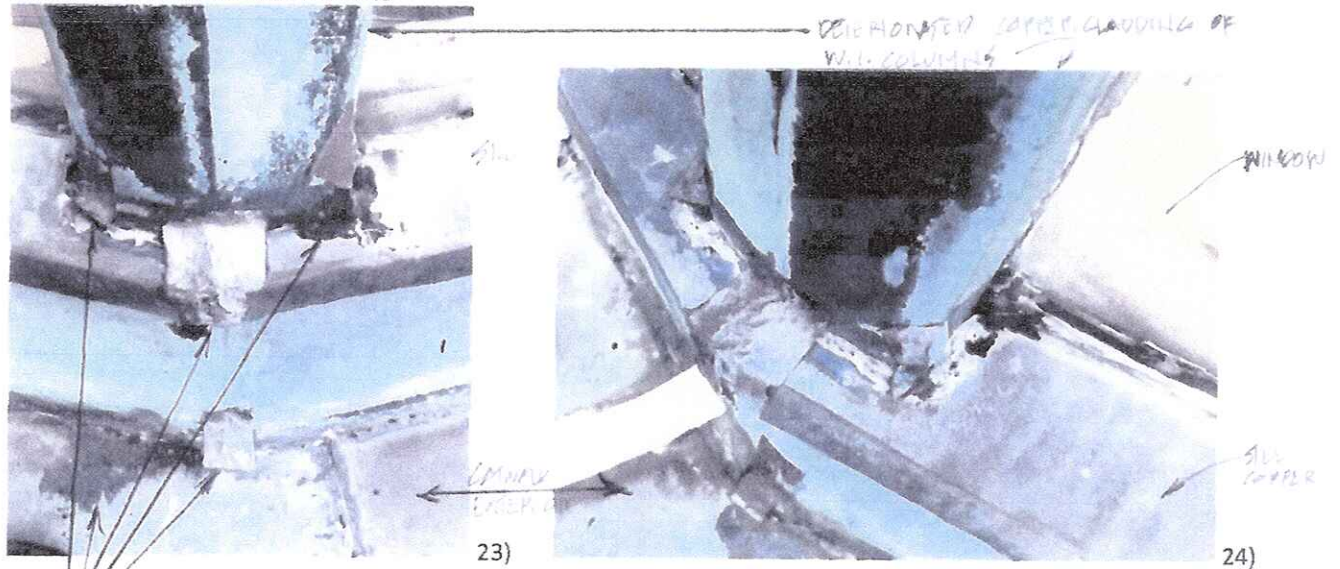
22) Exterior view of roof fascia copper cladding- which leaks and caused deterioration of the roof framing and wrought iron structural framing seen inside



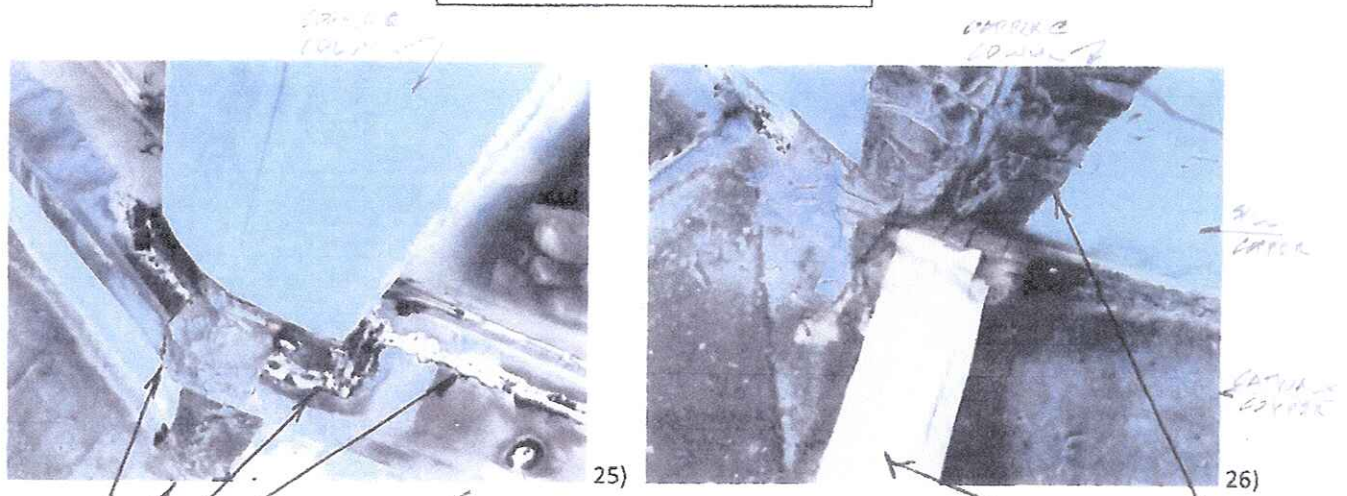
*PATCHING OF DETERIORATED COPPER CLADDING*



**SCITUATE LIGHTHOUSE – LANTERN STRUCTURE  
PHOTOS OF EXISTING CONDITIONS**



Exterior views of copper cladding of columns, sills and utility catwalk – severe deterioration of copper and deterioration of the copper repairs & patches visibly seen.



DETERIORATED COPPER CLADDING & DETERIORATED PATCHES & PREVIOUS REPAIRS OF COPPER CLADDING

**SCITUATE LIGHTHOUSE – LANTERN STRUCTURE  
PHOTOS OF EXISTING CONDITIONS**

27, 28, 29)

Utility catwalk exterior photos – severely deteriorated copper cladding of the catwalk and wrought iron railing system and its connection to the cantilevered catwalk. Catwalk framing and condition unknown

W.I. RAILING SYSTEM  
BRITTLE & RUSTED

RUSTED BASE PLATE & BOLT HEADS,  
RAILING SUPPORT

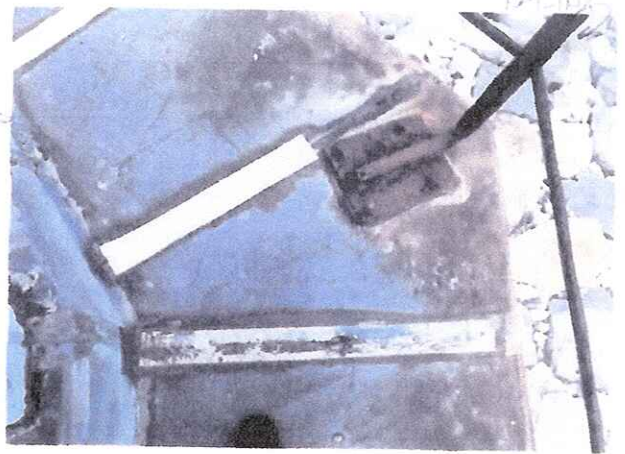
DETERIORATED COPPER  
CLAD CATWALK WITH  
DETERIORATED FITTINGS



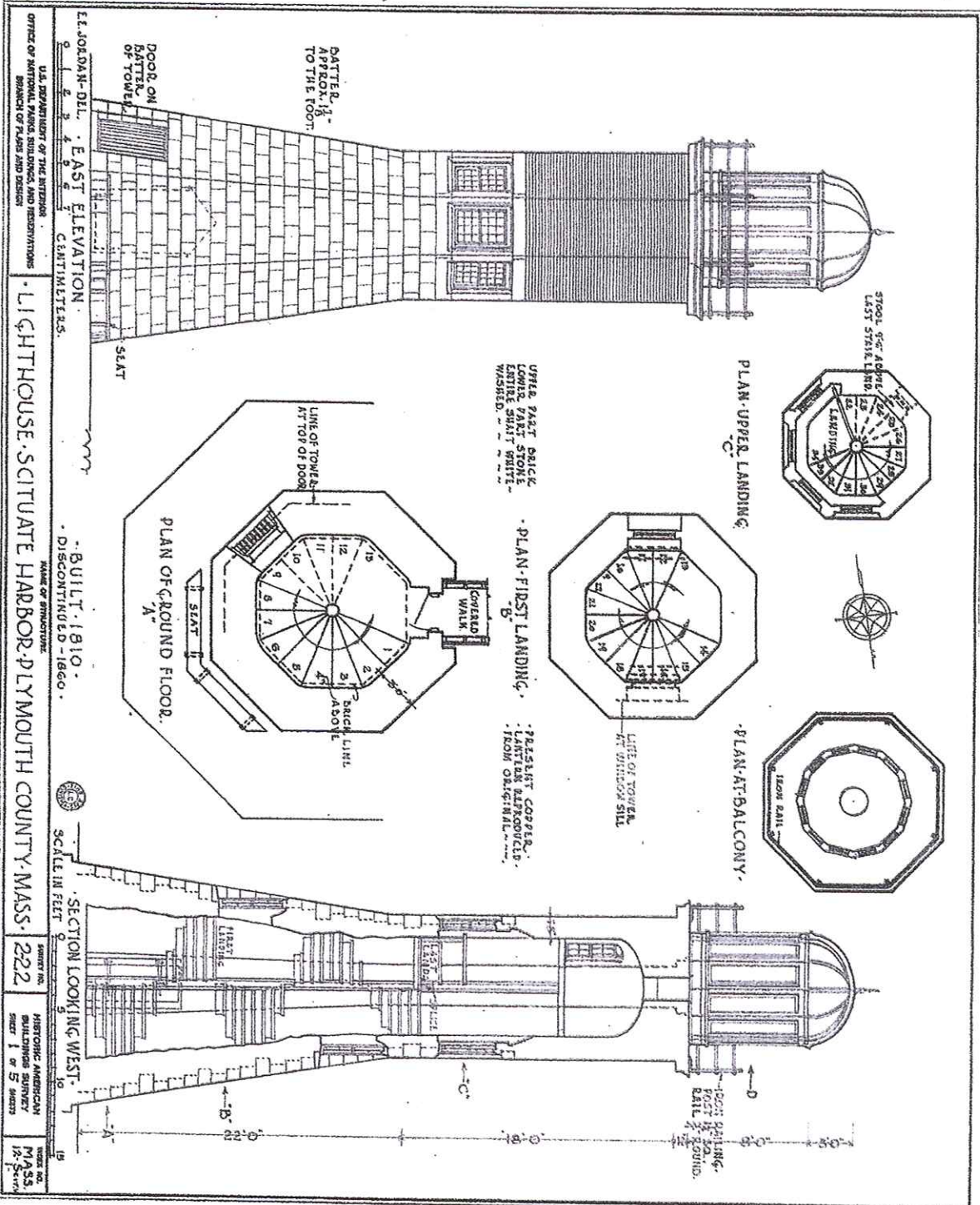
W.I. RAILING SYSTEM



CATWALK



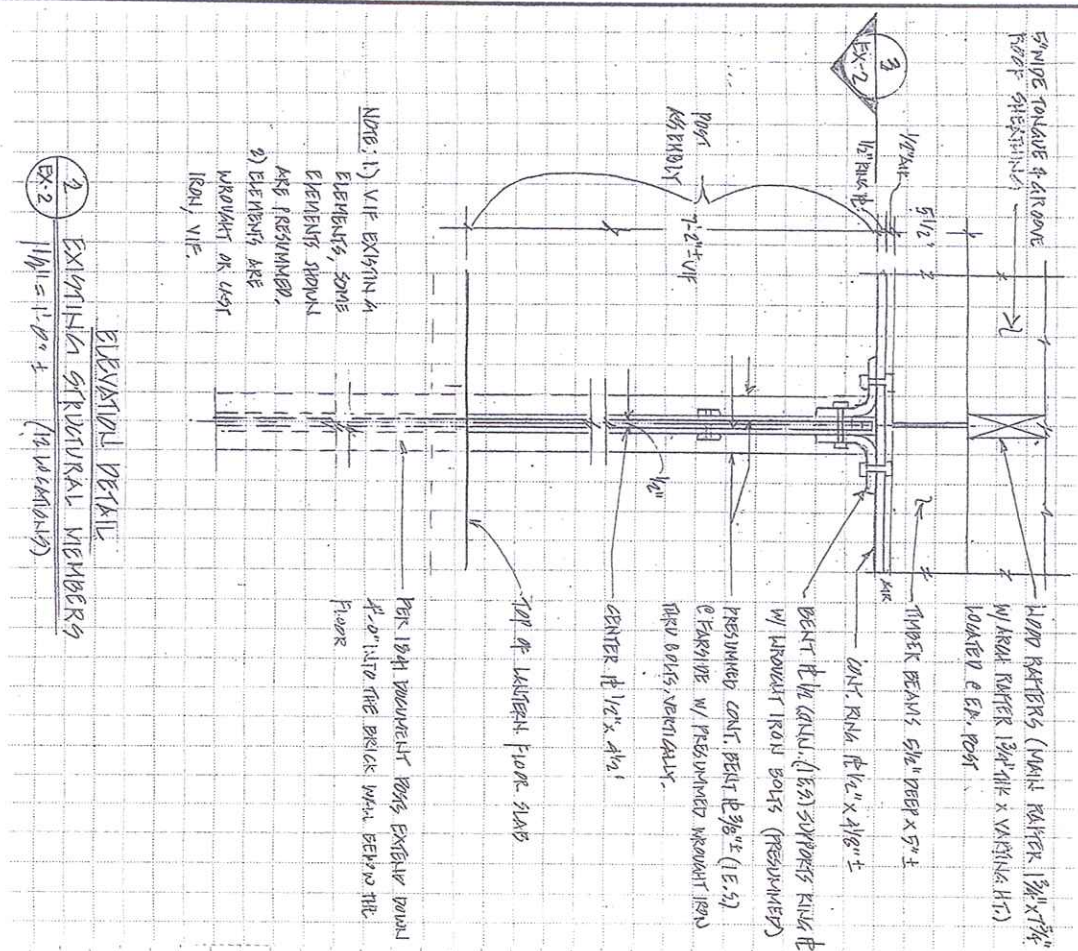




U.S. DEPARTMENT OF THE INTERIOR  
 OFFICE OF NATIONAL MONUMENTS AND PRESERVATION  
 BRANCH OF PLANS AND DESIGN

ET. JOHNSON-DLL. EAST ELEVATION  
 CONTINUED.  
 BUILT 1810.  
 DISCONTINUED 1860.  
 NAME OF ARCHITECT  
 SCITUATE HARBOR, PLYMOUTH COUNTY, MASS.

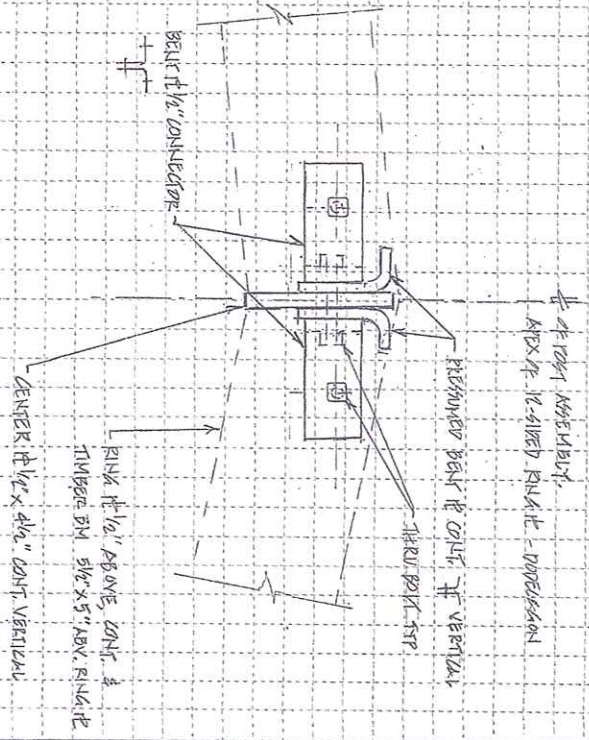
SCALE IN FEET  
 SHEET NO. 5  
 HISTORIC AMERICAN BUILDINGS SURVEY  
 SHEET 1 OF 5 SHEETS  
 2222  
 12 1/2



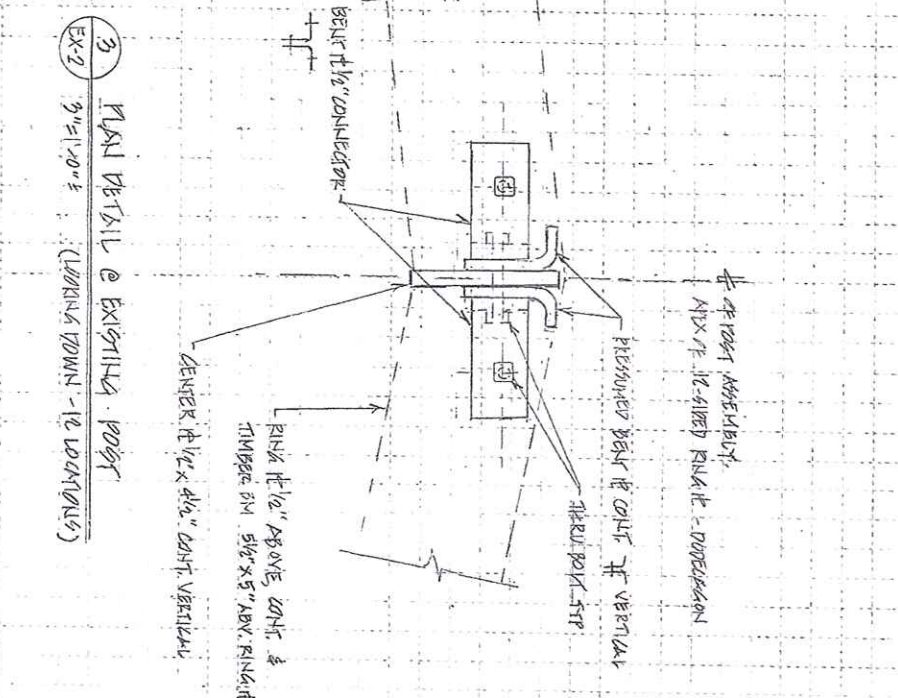
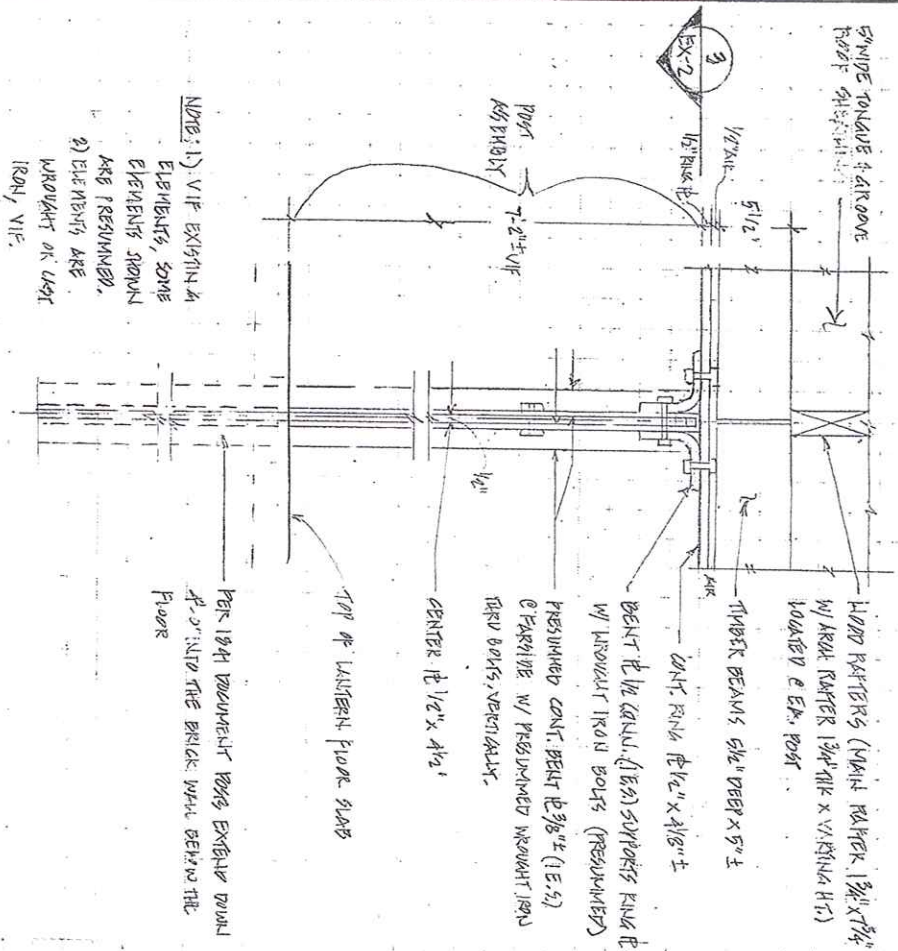
NOTE: 1) V.I.P. EXISTING ELEMENTS, SOME ARE PRESUMED, 2) ELEMENTS ARE WROUGHT OR CAST IRON, V.I.P.

EX-2  
 2) EXISTING STRUCTURAL MEMBERS  
 1 1/2" = 1'-0" ±  
 (AS INDICATED)

EX-2  
 3) MAIN DETAIL @ EXISTING POST  
 3" = 1'-0" ±  
 (WORKS DOWN - 1/2" LOCATIONS)



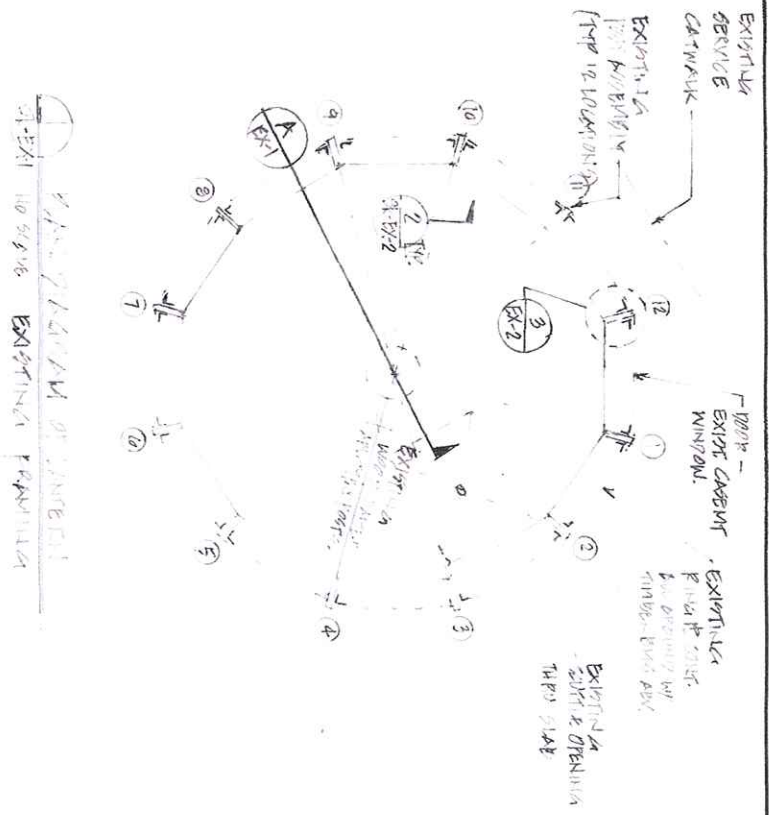




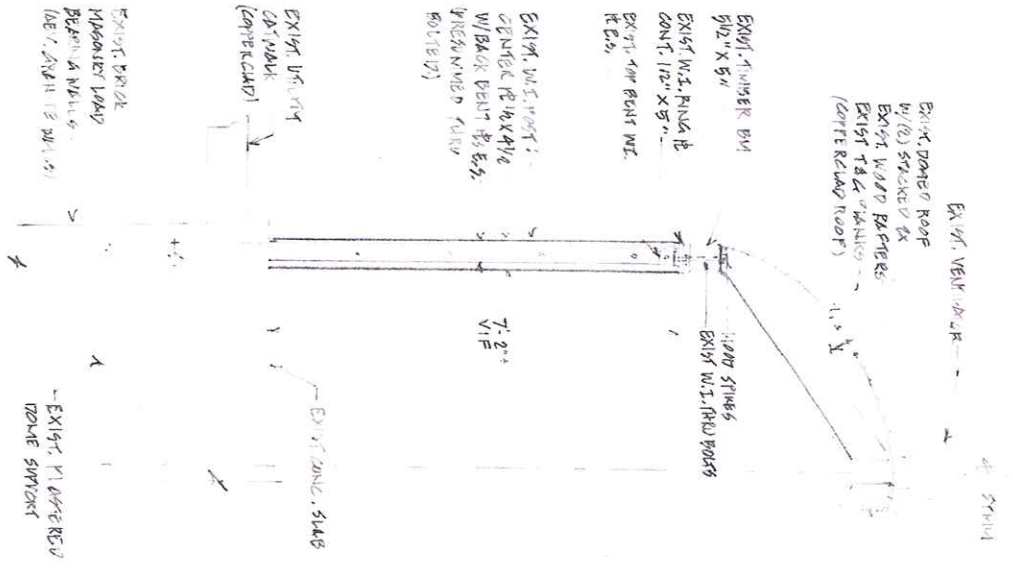
2 ELEVATION DETAIL  
EXISTING STRUCTURAL MEMBERS  
1/4" = 1' 0" ± (LOOKING DOWN)

3 PLAN DETAIL @ EXISTING POST  
3/4" = 1' 0" ± (LOOKING DOWN - IN PLAN)

NOTE: 1) VIF EXISTING ELEMENTS, SOME ARE ASSUMED. 2) ELEMENTS ARE BROUGHT ON LINE IRON, VIF.



SECTION A-A  
 10'-0" SERVICE EXISTING FRAME



SECTION A-A  
 10'-0" VENT. IN FIELD DIMENSIONS, MATERIALS, CONDITIONS

**RIVERMOOR ENGINEERING, LLC**  
 146 FRONT STREET, SUITE 211  
 SCITUATE, MASSACHUSETTS 02066  
 TEL: (781) 545-2848  
 FAX: (781) 544-7729

TITLE:  
**SCITUATE LIGHTHOUSE**  
 100 LIGHTHOUSE RD, SCITUATE, MA 01908  
 EXISTING LANTERN FRAME

DRAWING NO:  
**EX-1**  
 DATE: 10/22/19  
 PROJECT NO: 19-174