



Carr-Lynch Building A - South Elevation
1/8" = 1'-0" 4
200



Building A - South Elevation
1/8" = 1'-0" 3
200



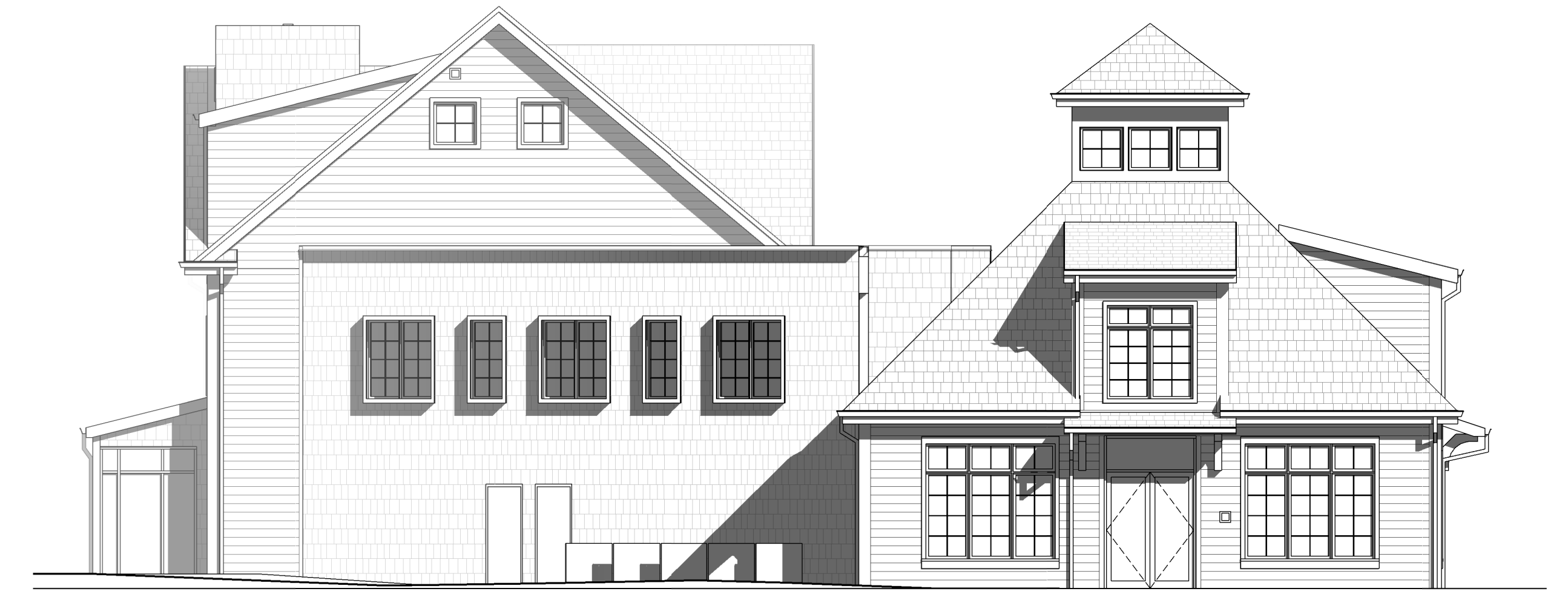
Carr-Lynch Building A - West Elevation
1/8" = 1'-0" 2
200



Building A - West Elevation
1/8" = 1'-0" 1
200



Carr-Lynch Building A - North Elevation
1/8" = 1'-0" 4
200



Building A - North Elevation
1/8" = 1'-0" 3
201



Carr-Lynch Building A - East Elevation
1/8" = 1'-0" 2
200



Building A - East Elevation
1/8" = 1'-0" 1
201



Carr-Lynch Building B - South Elevation
1/8" = 1'-0" 4
202



Building B - South Elevation
1/8" = 1'-0" 3
202



Carr-Lynch Building B - West Elevation
1/8" = 1'-0" 2
202



Building B - West Elevation
1/8" = 1'-0" 1
202



Carr-Lynch Building B - North Elevation
1/8" = 1'-0" 4
203



Building B - North Elevation
1/8" = 1'-0" 3
203



Carr-Lynch Building B - East Elevation
1/8" = 1'-0" 2
203



Building B - East Elevation
1/8" = 1'-0" 1
203



Carr-Lynch Building C - South Elevation
1/8" = 1'-0"

4
204



Building C - South Elevation
1/8" = 1'-0"

3
204



Carr-Lynch Building C - West Elevation
1/8" = 1'-0"

2
204



Building C - West Elevation
1/8" = 1'-0"

1
204



Carr-Lynch Building C - North Elevation
1/8" = 1'-0" 4
205



Building C - North Elevation
1/8" = 1'-0" 3
205



Carr-Lynch Building C - East Elevation
1/8" = 1'-0" 2
205



Building C - East Elevation
1/8" = 1'-0" 1
205



Carr-Lynch Building D - South Elevation
1/8" = 1'-0" 4
206



Building D - South Elevation
1/8" = 1'-0" 3
206



Carr-Lynch Building D - West Elevation
1/8" = 1'-0" 2
206



Building D - West Elevation
1/8" = 1'-0" 1
206



Carr-Lynch Building D - North Elevation
1/8" = 1'-0" 4
207



Building D - North Elevation
1/8" = 1'-0" 3
207



Carr-Lynch Building D - East Elevation
1/8" = 1'-0" 2
207



Building D - East Elevation
1/8" = 1'-0" 1
207



Carr-Lynch Building E - South Elevation
1/8" = 1'-0" 4
208



Building E - South Elevation
1/8" = 1'-0" 3
208



Carr-Lynch Building E - West Elevation
1/8" = 1'-0" 2
208



Building E - West Elevation
1/8" = 1'-0" 1
208



Carr-Lynch Building E - North Elevation
1/8" = 1'-0"

4
209



Building E - North Elevation
1/8" = 1'-0"

3
209



Carr-Lynch Building E - East Elevation
1/8" = 1'-0"

2
209



Building E - East Elevation
1/8" = 1'-0"

1
209