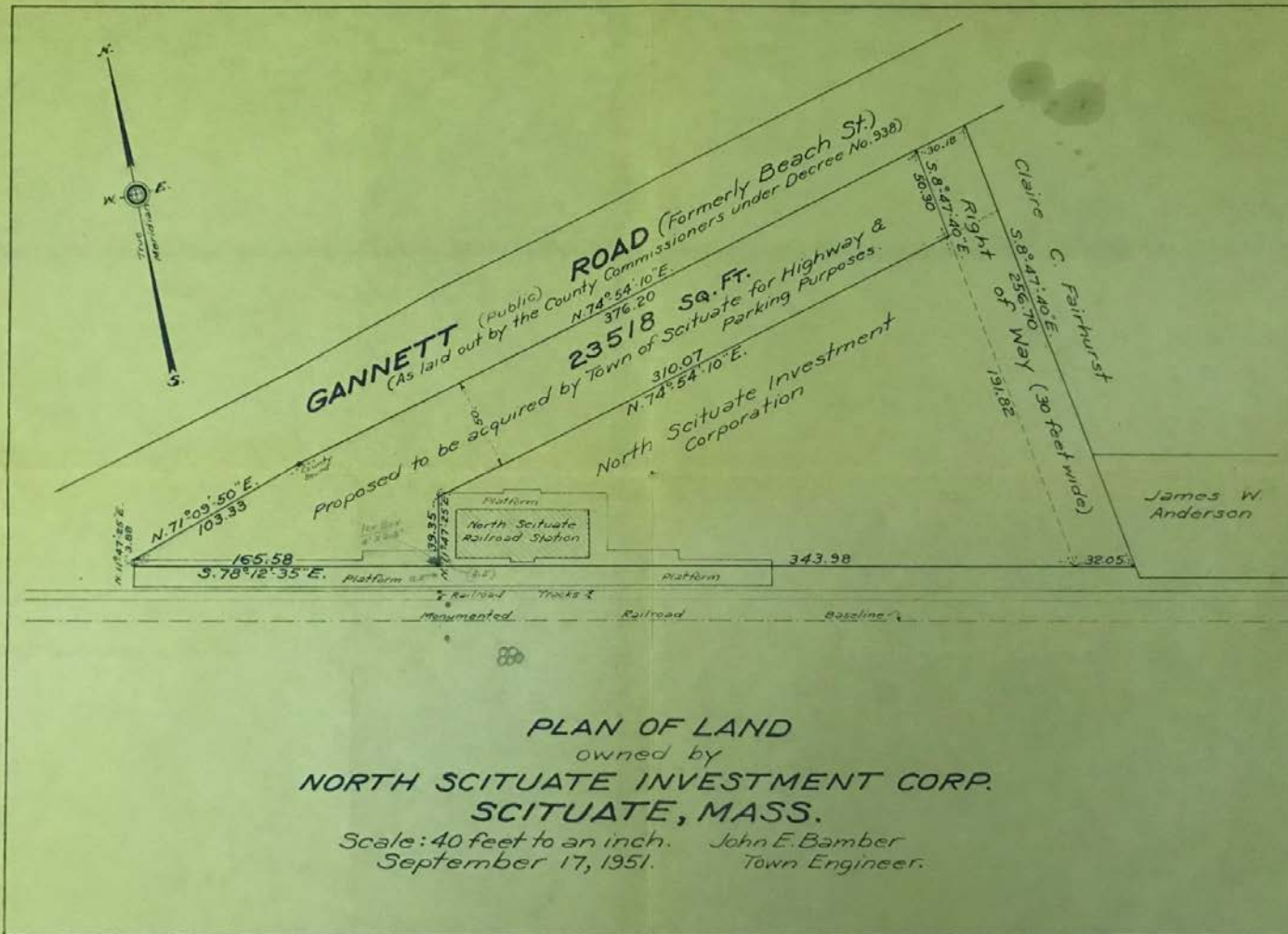


Request for Funding Community Preservation Committee

North Scituate Train Canopy project
from

Friends of North Scituate Village (FoNSV)

North Scituate Train Canopy



Folio 351

North Scituate Train Canopy

Present



When the relocation was completed in 2014

North Scituate Train Canopy

Future



North Scituate Train Canopy



Present



Artist rendition of the ceiling

North Scituate Train Canopy



Artist rendition of the ceiling and lighting

North Scituate Train Canopy



Open space and Recreation

North Scituate Train Canopy



History of North Scituate Signages

North Scituate Train Canopy



North Scituate Train Canopy

Item & Description	Contractor/ vendor	Est Cost
1. Excavation and pour fiber reinforced concrete (872 sq ft, 436 cu ft)	Ponte Enterprise LLC 774-696-9616	\$24.08/cu-ft, total \$10,500
1. Install conduit and electrical outlet (5) & Ceiling lights 2. Install ckt breaker box	Wood Electrical 781-389-2116	\$8,900
1. Purchase 5 historically correct reproduction ceiling lights	On-line: Large Gooseneck Barn Light	\$200 ea x 5 = \$1,000
1. Install cedar wooden plank ceiling, 80' by ~12'	Lowe's on estimate using 5.5" x 8' x 1"	\$22,000
1. Install 2 outdoor picnic round table similar to the ones at playground	Treetoproduct.com SKU: TPT-82 & 83	\$1300 for both
1. Install and secure environmentally approved trash cans	DPW, Town of Scituate	
1. Purchase and install three 4' by 4' boards in triangular format. The signs will display Scituate historical values	Need to work with Doug Smith and Historical Commission	~~\$2500 ea x 3 = \$7,500
Sub Total		\$51,200
Contingency	15%	\$7,680
Total		\$58,880

Thank you for your
consideration