



## Massachusetts

### Division of Marine Fisheries

#### SHELLFISH SANITATION AND MANAGEMENT

Growing Area Code: MB10

Area Name: COHASSET HARBOR

Area Town(s): Cohasset, Scituate

#### Shellfish Area Classification



Approved



Conditionally Approved



Restricted

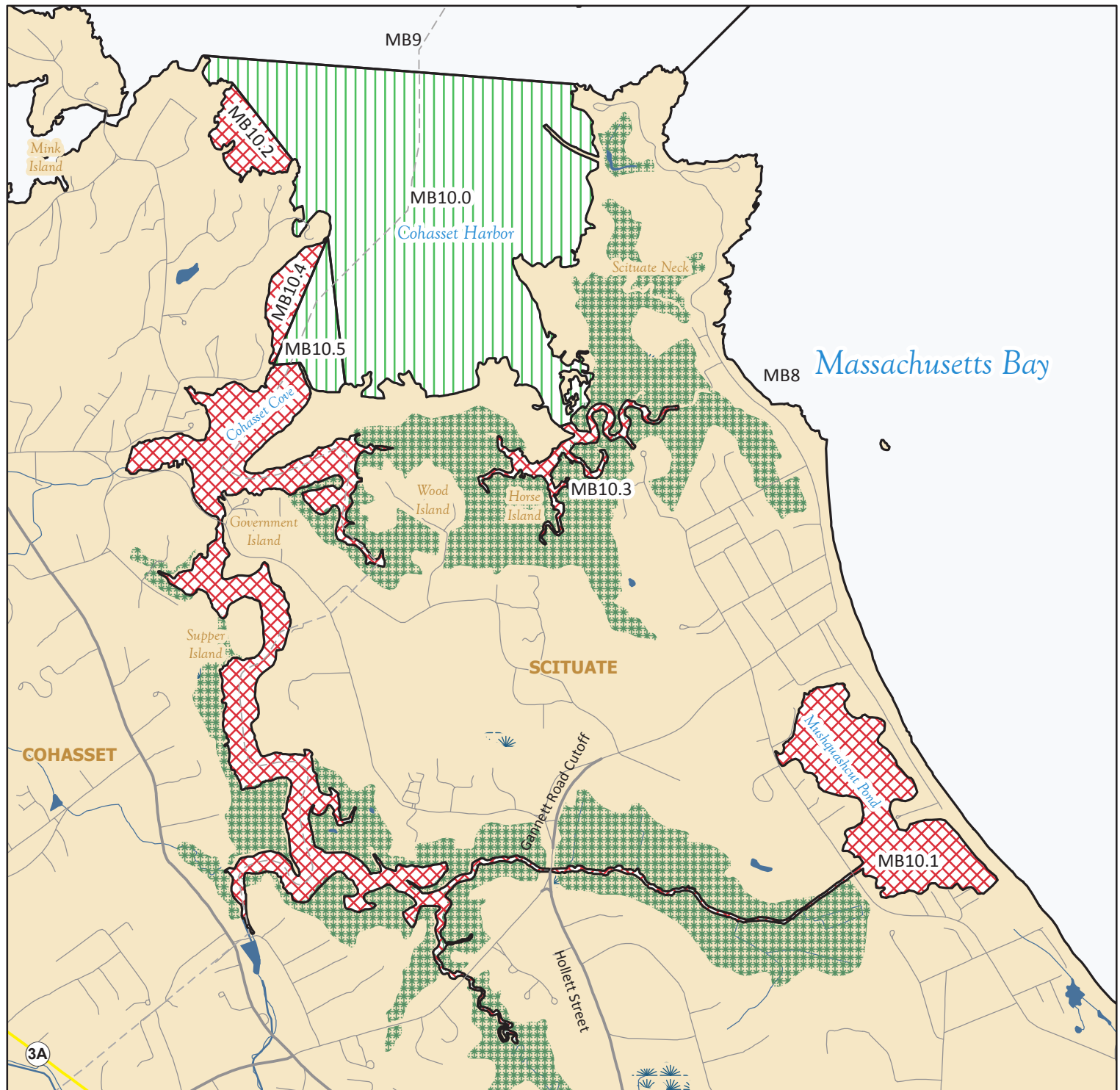


Conditionally Restricted



Prohibited

Produced: 9/9/2016



Area of  
detail

This map depicts the MarineFisheries' sanitary classification of shellfish growing waters in accordance with the National Shellfish Sanitation Program. It does not indicate the current status, either "open" or "closed" to harvesting due to shellfish management or public health reasons. Always confirm the status with local authorities and/or MarineFisheries. Information on this map may be out-dated or otherwise incorrect, and should not be relied upon for legal purposes.



Marsh/Wetland



Saltmarsh



Pond/Lake/Reservoir



Town Boundaries



Stream/Ditch/Canal



0

0.5

1

miles