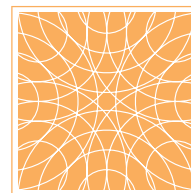


THE COTTAGES AT OLD OAKEN BUCKET

REVISED SITE AND ARCHITECTURE PACKAGE

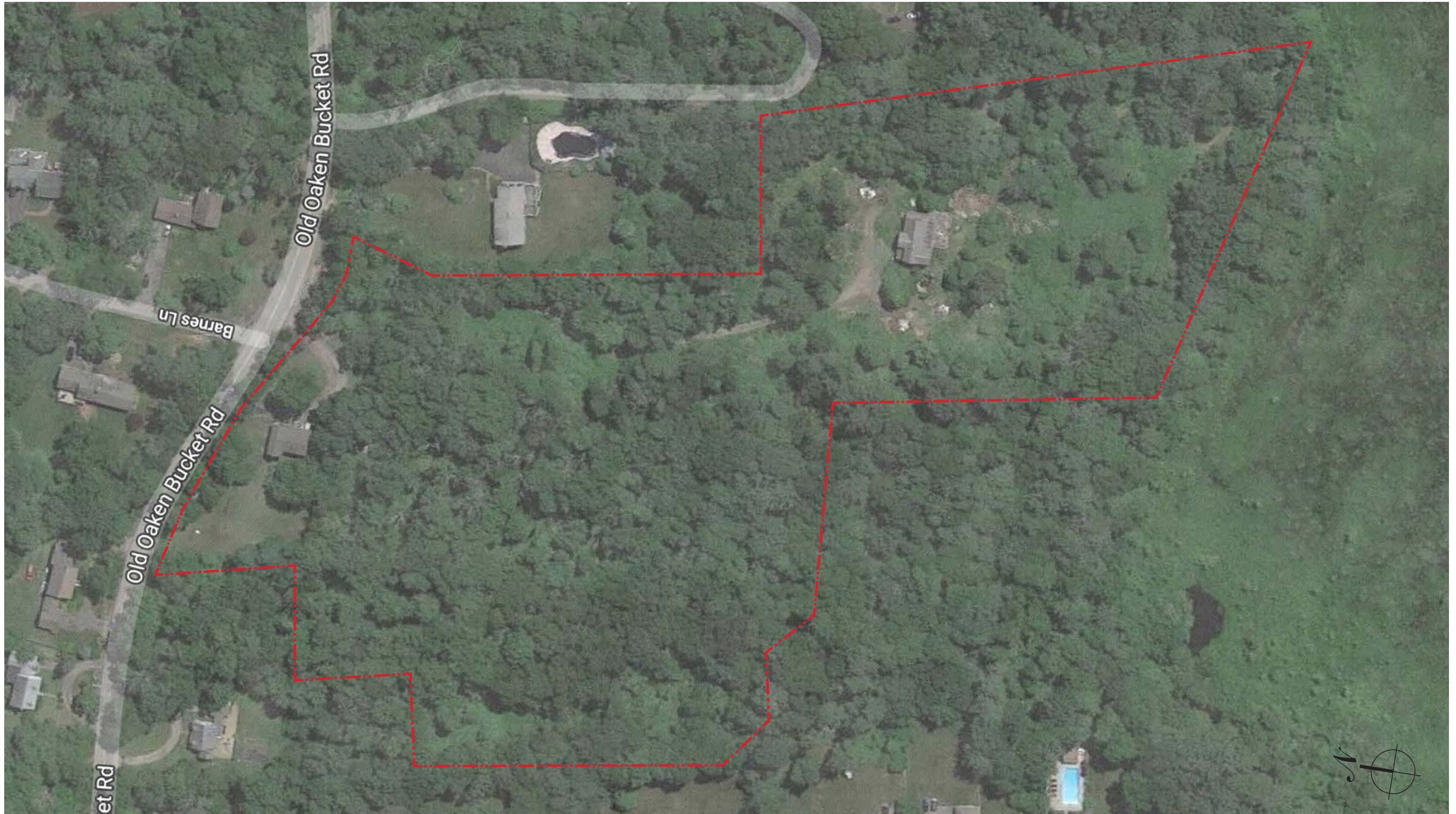
JANUARY 11, 2023



UNION STUDIO

ARCHITECTURE & COMMUNITY DESIGN



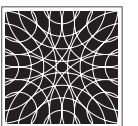


THE COTTAGES AT OLD OAKEN BUCKET

EXISTING SITE CONDITIONS - AERIAL

JANUARY 11, 2023

SCALE: 1"=100'-0"





PROGRAM	
	(6) 2BR Caroline Cottages
	(16) 3BR Rose Cottages
	(10) 3BR Lilly Cottages
(32) Total Units	

THE COTTAGES AT OLD OAKEN BUCKET

PREVIOUS SITE LAYOUT (FROM 6/17/22)


JANUARY 11, 2023

SCALE: 1"=100'-0"





PROGRAM

 (24) 3BR Lilly Cottages

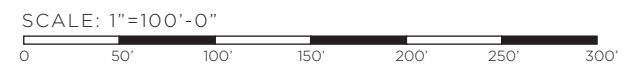
(24) Total Units




THE COTTAGES AT OLD OAKEN BUCKET

PREVIOUS SITE LAYOUT (FROM 9/30/22)

JANUARY 11, 2023





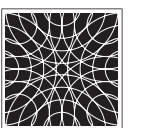
PROGRAM	
	(24) 3BR Lilly Cottages
	(24) Total Units

THE COTTAGES AT OLD OAKEN BUCKET

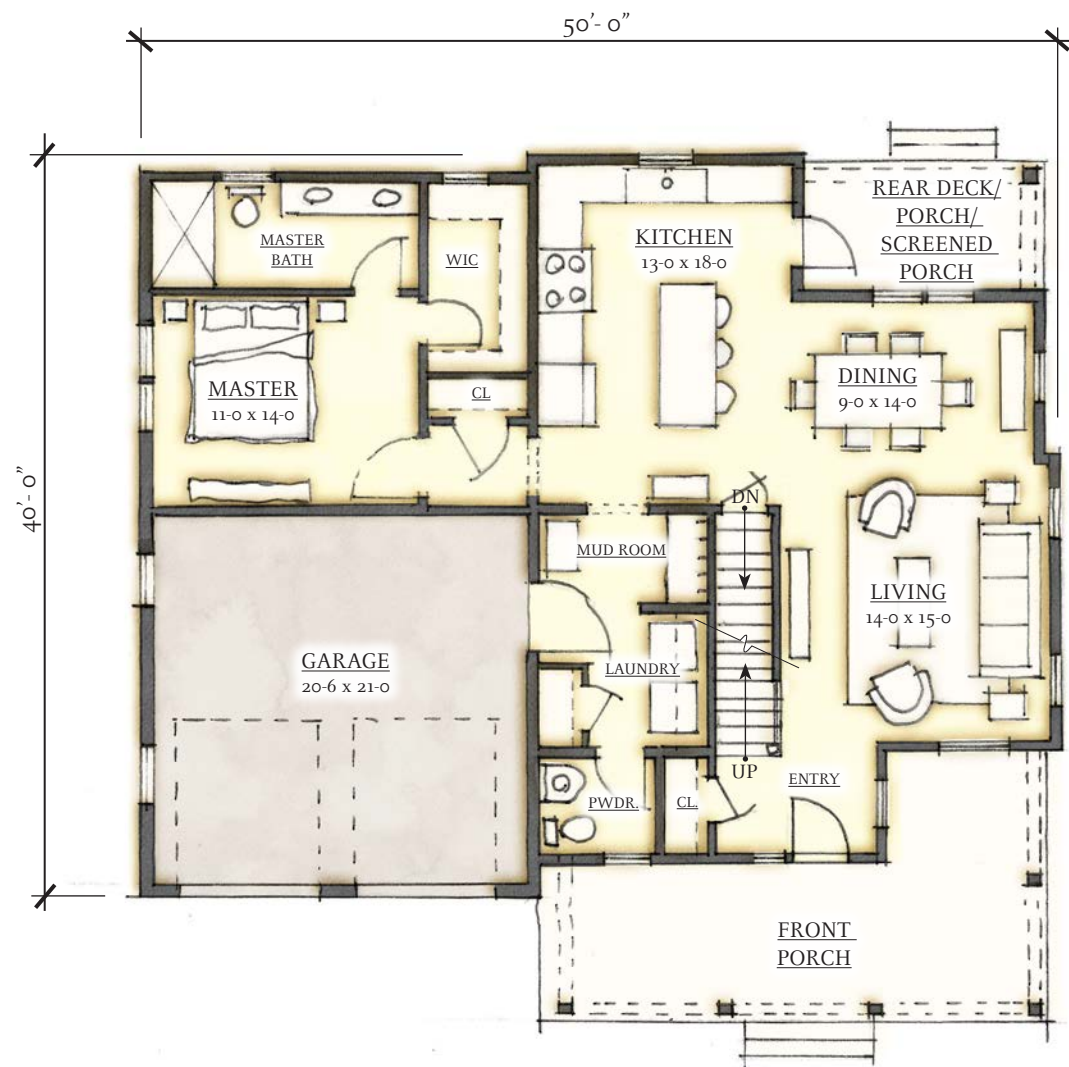
PROPOSED SITE LAYOUT

JANUARY 11, 2023

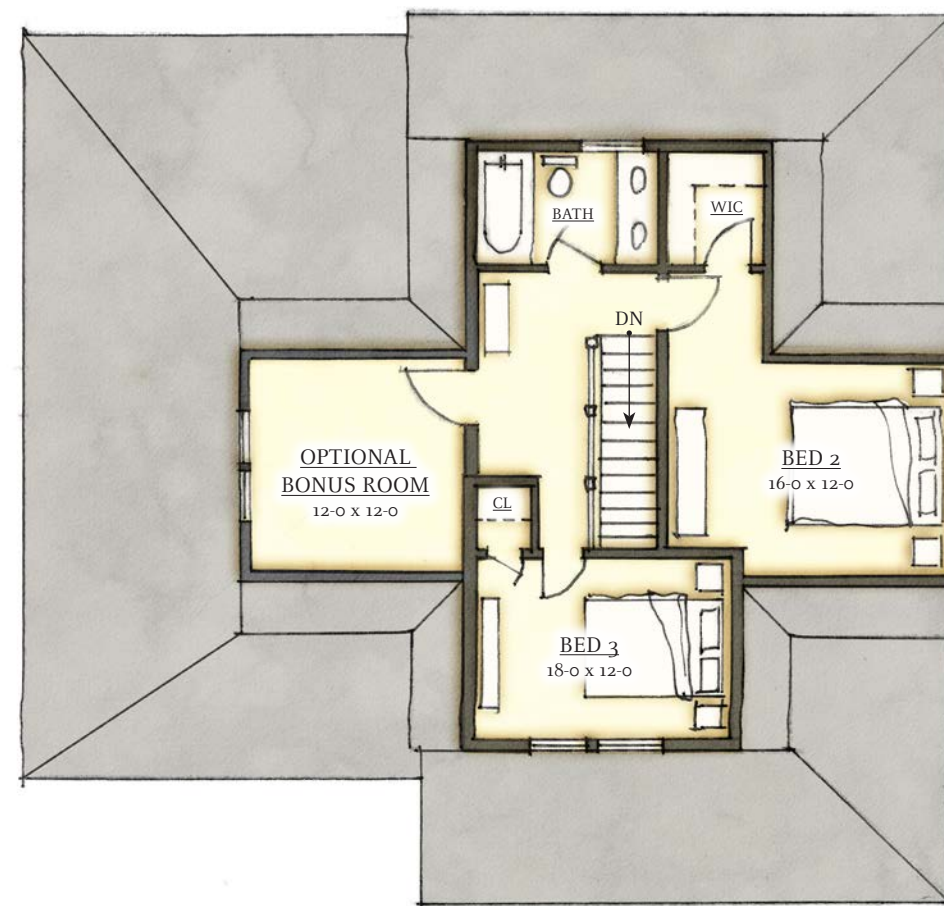
SCALE: 1"=100'-0"



UNION STUDIO
ARCHITECTURE & COMMUNITY DESIGN



FIRST FLOOR PLAN



SECOND FLOOR PLAN

LILLY COTTAGE

Total Heated - 1,942 sf (2,086 w/ Bonus)
 First Floor Heated - 1,279 sf
 Second Floor Heated - 663 sf
 Optional Bonus Room - 144 sf

THE COTTAGES AT OLD OAKEN BUCKET

LILLY COTTAGE PLANS

JANUARY 11, 2023

SCALE: 3/32"=1'-0"



Donald W. Powers





FRONT ELEVATION



RIGHT SIDE ELEVATION



LEFT SIDE ELEVATION



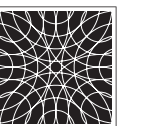
REAR ELEVATION

THE COTTAGES AT OLD OAKEN BUCKET

LILLY COTTAGE ELEVATIONS

JANUARY 11, 2023

SCALE: 3/32"=1'-0"





Typical Exterior Materials:

- Composite Clapboard Siding
- Smooth Composite Running Trim and Cornerboards
- Smooth MDO Panels
- Window Casings with PVC Subsill
- Double Hung Insulated Vinyl Windows with Low-E Glazing and Divided Lites
- Fiberglass Entry Door with Vision Lite
- Steel Carriage House Style Overhead Garage Door with Lites
- 25 Year Asphalt Shingle Roof
- Aluminum Gutters and Downspouts
- Composite Decking
- PVC Brackets and Corbels
- PVC Post and Railing Systems

THE COTTAGES AT OLD OAKEN BUCKET

TYPICAL EXTERIOR MATERIALS

JANUARY 11, 2023

SCALE: 3/32"=1'-0"

