

PLANT LIST

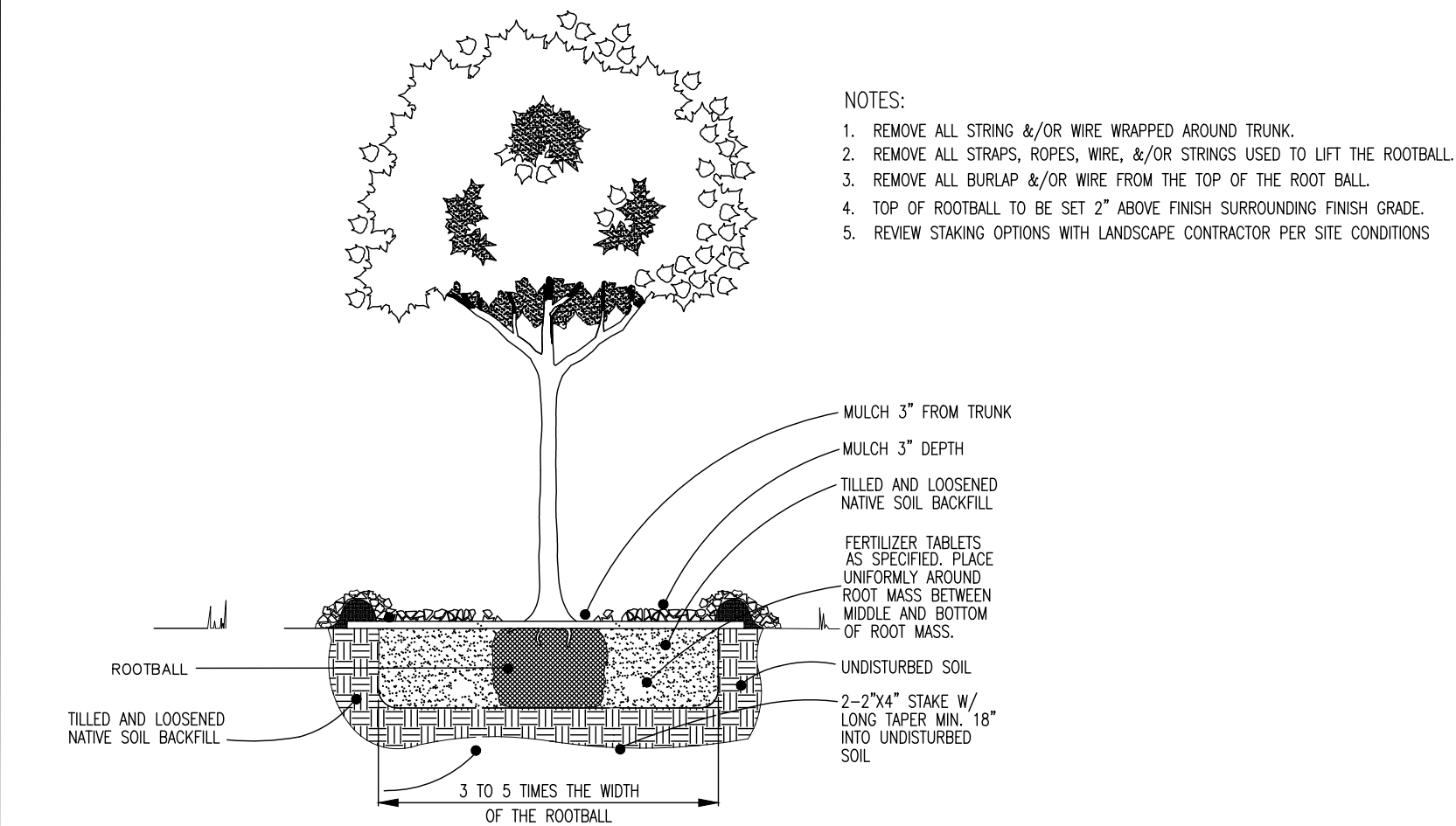
SYM	QTY	BOTANICAL NAME	COMMON NAME	SIZE	REMARKS
EVERGREEN TREES					
JV	33	Juniperus virginiana	Red Cedar	7' - 8' ht.	
DECIDUOUS TREES					
ARA	4	Acer rubrum 'Armstrong'	Armstrong Red Maple	3" cal.	
AR	4	Acer rubrum	Red Maple	3" cal.	
BN	6	Betula nigra	River Birch	7' - 8' ht.	Clump Form
GT	3	Gleditsia triacanthos	Honey Locust	3" cal.	
SHRUBS					
CP	38	Comptonia peregrina	Sweet Fern	5 gal.	spacing - 3' o.c.
IG	53	Ilex glabra	hkberry	18" - 24" ht.	spacing - 4' o.c.
MP	38	Myrica pennsylvanica	Northern Bayberry	18" - 24" ht.	spacing - 4' o.c.
VD	11	Viburnum dentatum	Arrowwood Viburnum	18" - 24" ht.	spacing - 6' o.c.
VA	43	Vaccinium angustifolium	Low Bush Blueberry	18" - 24" ht.	spacing - 2' o.c.
RV	6	Rosa virginiana	Virginia Rose	18" - 24" ht.	spacing - 3' o.c.
PERENNIALS & GRASSES					
PV	34	Panicum virgatum	Switchgrass	#2	spacing - 2' o.c.

MEADOW MIX: BY NEW ENGLAND WETLAND PLANTS

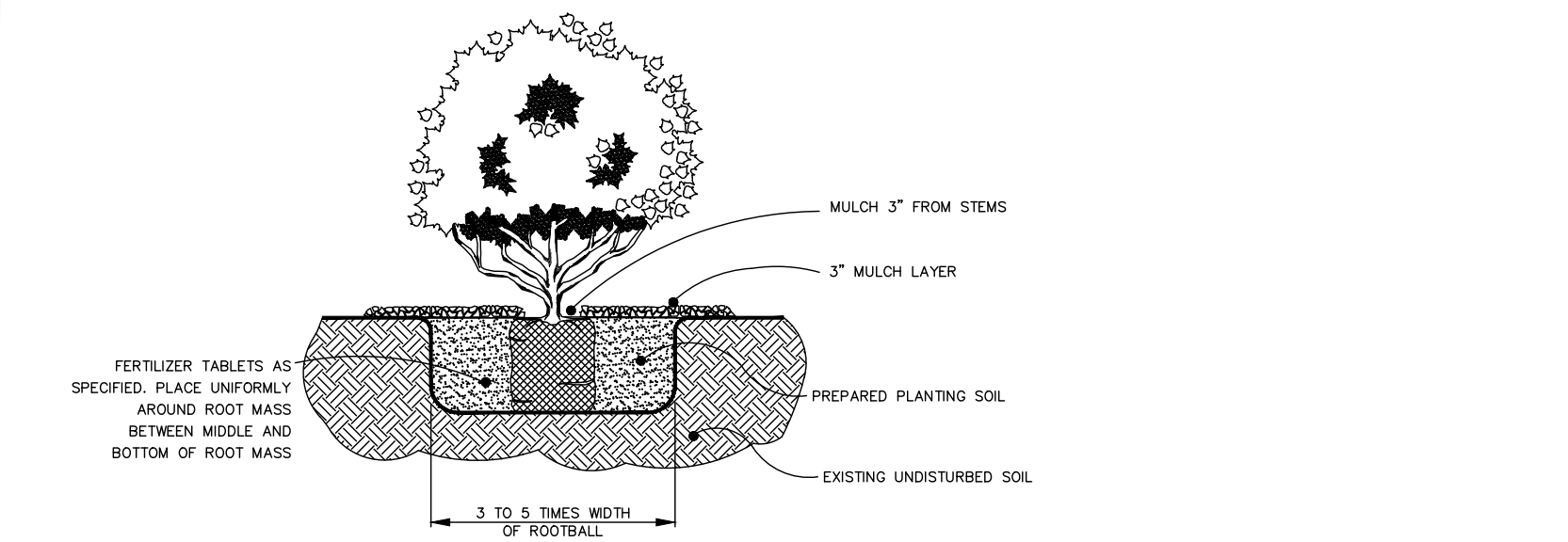
SPECIES: Little Bluestem (Schizachyrium scoparium), Red Fescue (Festuca rubra), Indian Grass (Sorghastrum nutans), Partridge Pea (Chamaecrista fasciculata), Canada Wild Rye (Elymus canadensis), Virginia Wild Rye (Elymus virginicus), Blue Vervain (Verbena hastata), Butterfly Milkweed (Asclepias tuberosa), Narrowleaved Blue Eyed Grass (Sisyrinchium angustifolium), Black Eyed Susan (Rudbeckia hirta), New England Aster (Symphyotrichum novae-angliae), Spiked Gayfeather/ Marsh Blazing Star (Liatris spicata), Hollow-Stem Joe Pye Weed (Eupatorium fistulosum/Eutrochium fistulosum)Starved/Calico Aster (Aster lateriflorus/Symphyotrichum lateriflorum), Early Goldenrod (Solidago juncea),

LAWN SEED MIX:

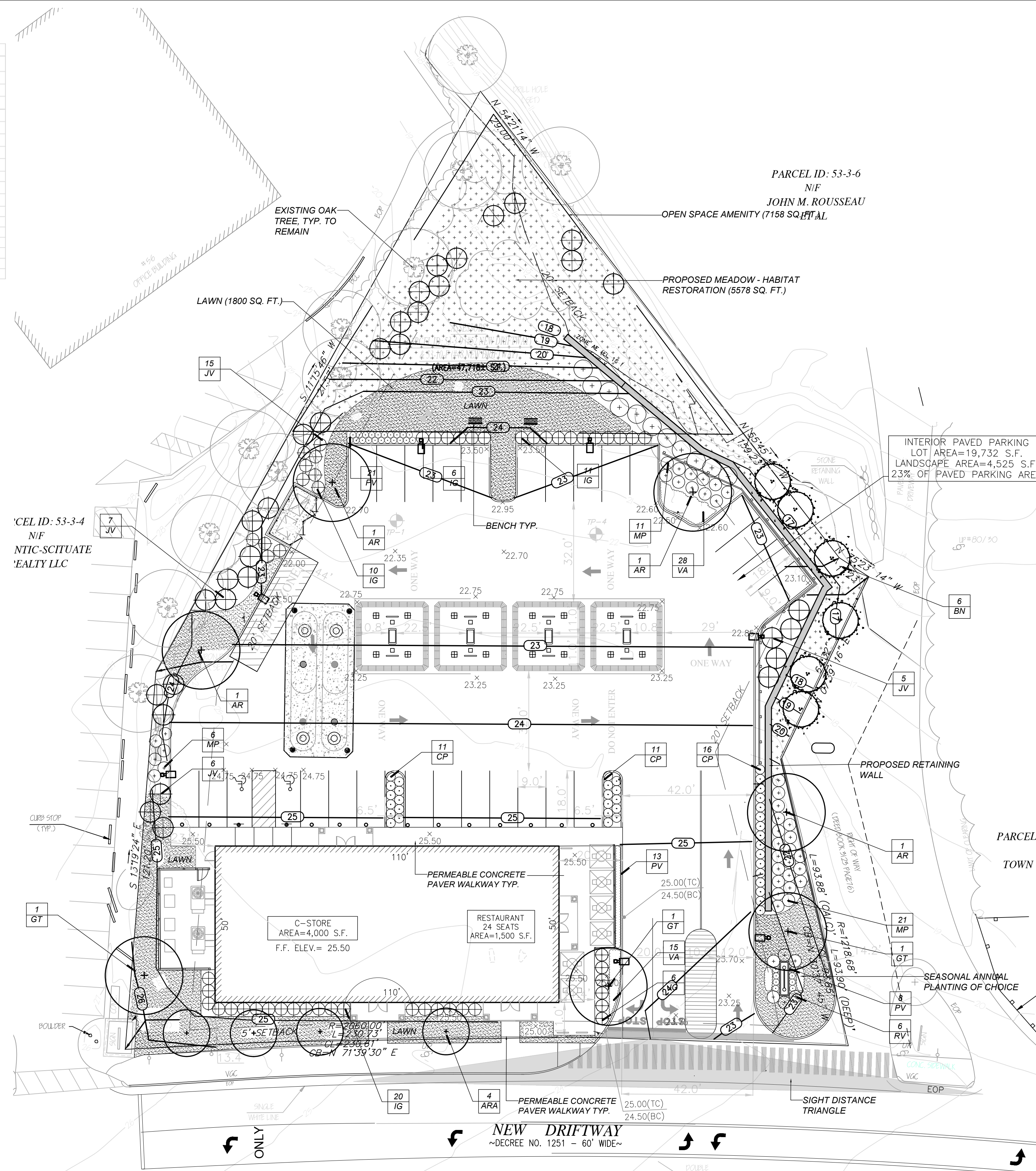
RUGBY II LS HYBRID BY NORTHEAST NURSERY, INC.
 20% SPYDER LS TURF TYPE TALL FESCUE
 20% SCREAMER LS TURF TYPE TALL FESCUE
 20% FIRECRACKER LS TURF TYPE TALL FESCUE
 15% TITANIUM LS TURF TYPE TALL FESCUE
 20% LATERAL SPREAD BLEND PERENNIAL RYEGRASS BLENDS
 05% FAHRENHEIT 90 HYBRID BLUEGRASS
 REFER TO NURSERY'S REQUIRED SEED RATE



TREE PLANTING DETAIL N.T.S.



SHRUB AND GROUND COVER DETAIL N.T.S.



PLANTING NOTES

- DO NOT SCALE FROM DRAWINGS.
- CONTRACTOR SHALL REPORT ANY DISCREPANCIES BETWEEN THE DRAWINGS AND THE FIELD CONDITIONS TO THE LANDSCAPE ARCHITECT PRIOR TO PLANTING. QUANTITIES REPRESENTED ON THE DRAWING PLANT LABELS SHALL SUPERCEDE THOSE ON THE PLANT LIST.
- NO SUBSTITUTIONS WILL BE ALLOWED WITHOUT PRIOR APPROVAL BY THE LANDSCAPE ARCHITECT AND/OR OWNER.
- ALL PLANTS SHALL BE BALLED AND BURLAPPED OR CONTAINER GROWN UNLESS OTHERWISE NOTED ON THE PLANT LIST.
- ALL PLANTS SHALL BE APPROVED BY THE LANDSCAPE ARCHITECT AND/OR OWNER PRIOR TO THEIR INSTALLATION.
- ANY PLANTS LABELED 'SPECIMEN' ON THE PLANT LIST SHALL BE TAGGED AT SOURCE BY THE LANDSCAPE ARCHITECT AND/OR OWNER UNLESS DIRECTED OTHERWISE.
- THE CONTRACTOR SHALL VERIFY THE LOCATION OF EXISTING ABOVE AND BELOW GRADE UTILITIES AND SERVICES AND SHALL PROVIDE APPROPRIATE PROTECTIONS DURING CONSTRUCTION. THE CONTRACTOR IS RESPONSIBLE FOR NOTIFYING THE LOCAL UTILITY LOCATION SERVICE PROVIDER PRIOR TO COMMENCING WORK. ANY UTILITIES DAMAGED DURING SITE WORK SHALL BE REPAIRED AT THE CONTRACTOR'S EXPENSE.
- THE CONTRACTOR SHALL POSITION ALL PLANT MATERIAL IN LOCATIONS SHOWN ON THE PLAN FOR REVIEW BY LANDSCAPE ARCHITECT AND/OR OWNER. THE CONTRACTOR IS RESPONSIBLE FOR ADJUSTING THE PLANTS AS NEEDED TO ACCOMMODATE FOR LEDGE AND SHALL CONTACT THE LANDSCAPE ARCHITECT IF PLANTING IS IMPEDED BY LEDGE.
- ALL PLANT MATERIAL SHALL CONFORM TO THE GUIDELINES ESTABLISHED BY THE AMERICAN STANDARD FOR NURSERY STOCK, PUBLISHED BY THE AMERICAN ASSOCIATION OF NURSERYMEN, LATEST EDITION. THE CONTRACTOR SHALL INSTALL PLANTS USING THE METHODS OUTLINED IN THE "RECOMMENDATIONS FOR PLANTING TREES AND SHRUBS" UMASS EXTENSION FACT SHEET SERIES, MAY 1996, AND COMMONLY ACCEPTED REGIONAL PRACTICE STANDARDS, UNLESS OTHERWISE DIRECTED BY THE LANDSCAPE ARCHITECT. THE CONTRACTOR SHALL TILL ALL NEW PLANT PLANTING BEDS FOR SHRUBS AND PERENNIALS TO A DEPTH OF 12" FOR PERENNIALS AND 18" FOR SHRUBS BEFORE PLANTING. IN CONDITIONS WHERE THIS IS NOT ACHIEVABLE BECAUSE OF TREE ROOTS, UTILITIES OR OTHER OBSTACLES, THE PLANTING AREA SHALL BE TURNED OVER BY HAND. THE CONTRACTOR SHALL COORDINATE WITH THE LANDSCAPE ARCHITECT AND OWNER PRIOR TO BEGINNING SITE WORK TO DETERMINE THE PLANTING SOIL AMENDMENTS REQUIRED - SUCH AS THE ADDITION OF COMPOST AND/OR PEAT MOSS. UNLESS OTHERWISE DIRECTED, THE CONTRACTOR SHALL PROVIDE THE FOLLOWING GENERALLY ACCEPTED SOIL BACKFILL RATIO: 1/2 NATIVE SOIL, 1/2 IMPORTED LOAM, 1/4 COMPOST/PEAT MOSS. INITIALLY, THE CONTRACTOR SHALL ASSUME THE INCORPORATION OF 1-2 CUBIC YARDS OF COMPOST/PEAT MOSS PER 1000 SQUARE FEET OF PLANT BED. IN ADDITION, THE CONTRACTOR SHALL INCORPORATE A PLANT STARTER FERTILIZER SUCH AS 18-10-10 IN THE PLANTING SOIL MIX.
- THE CONTRACTOR SHALL REVIEW AND ADDITIONAL SITE DRAINAGE REQUIREMENTS WITH THE OWNER AND/OR LANDSCAPE ARCHITECT AND COORDINATE POTENTIAL IMPROVEMENTS IN ORDER TO ATTAIN POSITIVE DRAINAGE IN ALL CONDITIONS.
- THE CONTRACTOR SHALL INSTALL SHREDDED HARDWOOD BARK MULCH, SUCH AS PINE BARK MULCH THAT IS MEDIUM TO DARK BROWN IN COLOR AND FREE OF ANY DEBRIS OR LARGE PIECES OF WOOD. MULCHES WITH DYES WILL NOT BE ACCEPTED. MULCH ALL PLANT BEDS AFTER PLANTING TO THE FOLLOWING "LOOSE MEASURE" DEPTHS:
 • TREES AND SHRUBS - 3"
 • PERENNIAL GROUND COVER AND ORNAMENTAL GRASS BEDS - 1.5"
- THE CONTRACTOR IS RESPONSIBLE FOR SEEDING ALL AREAS DISTURBED DURING CONSTRUCTION ACCORDING TO THE PLANTING PLAN OR AS DIRECTED BY THE LANDSCAPE ARCHITECT AND/OR OWNER. GRASS SEED SHALL BE A CAPE COD FESCUE SEED BLEND: 60% TALL FESCUE, 10% BORNITO HARD FESCUE, 10% JAMESTOWN CHEWING FESCUE, 20% PERENNIAL RYE
- EXISTING TREES TO REMAIN SHALL BE PROTECTED DURING CONSTRUCTION. THERE SHALL BE NO PARKING OR STOCKPILING OF CONSTRUCTION MATERIAL WITHIN THE DRIP LINE OF THE TREES TO REMAIN.
- THE CONTRACTOR SHALL MAINTAIN ALL PLANT MATERIAL UNTIL PROVISIONAL ACCEPTANCE OF THE PROJECT IS ISSUED BY THE LANDSCAPE ARCHITECT. ALL PLANTS SHALL BE GUARANTEED TO BE ALIVE AND IN VIGOROUS GROWING CONDITION FOR A PERIOD OF ONE (1) FULL YEARS FROM THE TIME OF PROVISIONAL ACCEPTANCE. FINAL ACCEPTANCE WILL BE MADE BY THE LANDSCAPE ARCHITECT AND OWNER AT THE END OF THE GUARANTEE PERIOD. ANY PLANTS DEEMED UNACCEPTABLE PRIOR TO THE END OF THE GUARANTEE PERIOD SHALL BE PROMPTLY REPLACED AT THE CONTRACTOR'S EXPENSE.
- LANDSCAPE CONTRACTOR SHALL REMOVE INVASIVE PLANT MATERIAL PRIOR TO COMMENCEMENT OF PLANTING BED PREPARATION. THE LANDSCAPE CONTRACTOR SHALL COORDINATE WITH THE TOWN OF SCITUATE TO VERIFY INVASIVE SPECIES AND METHOD OF REMOVAL.
- TYP. PLANTING SEASON IS BETWEEN MID-APRIL AND MID-NOVEMBER, BUT EACH YEAR IS DEPENDENT ON CURRENT WEATHER CONDITIONS AND PLANT MATERIAL AVAILABILITY.

LANDSCAPE PLAN

48-52 NEW DRIFTWAY SCITUATE, MA

SEAN PAPICH
 landscape architecture

222 north street hingham, ma 02043
 7781.741.5455 www.seanpapich.com

DATE: NOV 10, 2020
 SCALE: 1" = 20'-0"
 PROJECT NO. 2049

