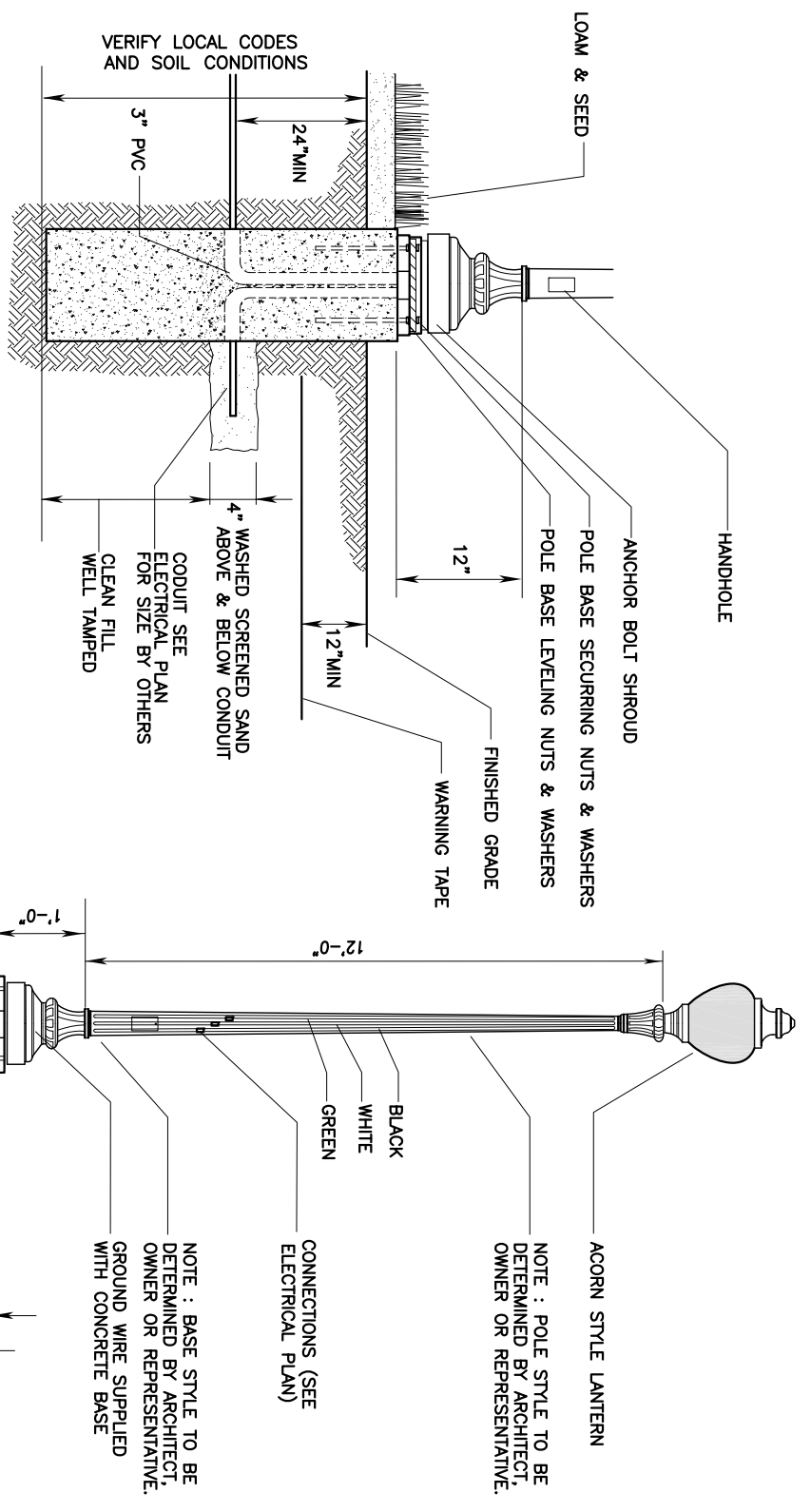
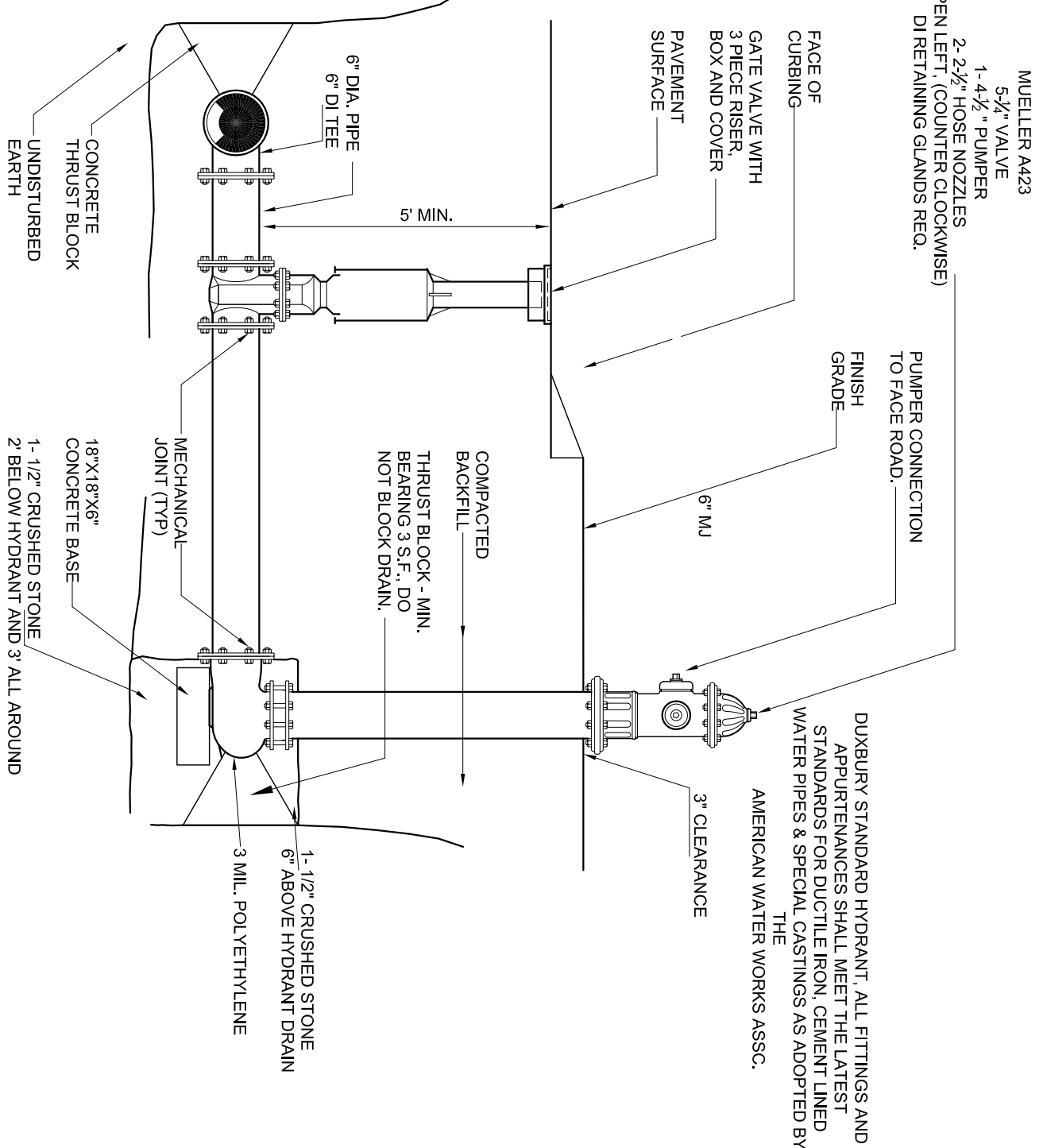


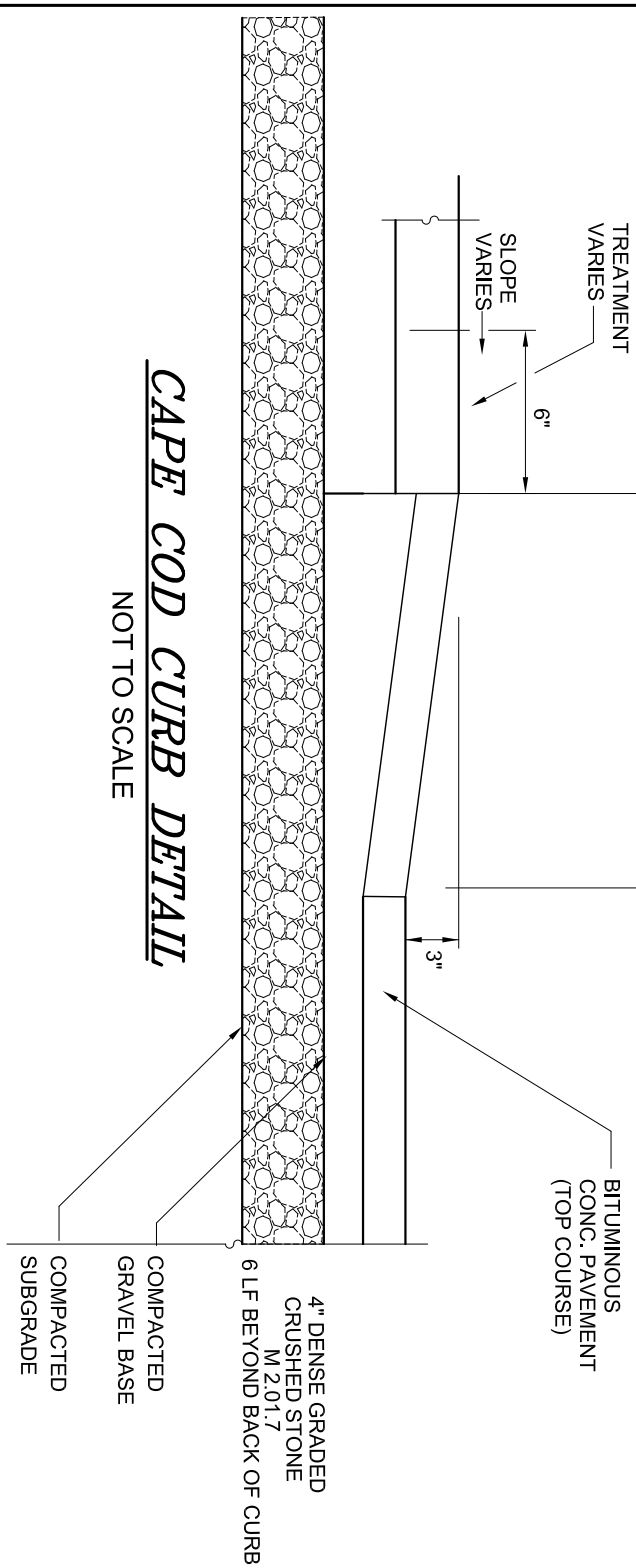
NOTES	STATE NO.
UP TO VERT LOCAL FORTROUBLE REPAIRMENTS USING SPHERES TO OBTAIN MIN LOADS AND LOCAL DIMENSIONS PRIOR TO CONSTRUCTION.	2207 PAV
LIGHT POLE TO BE FURNISHED AND INSTALLED BY THE ELECTRICAL CONTRACTOR. STAYS TO BE PROVIDED PRIOR TO CONTACTING DETAILS OF LIGHT COMPONENTS SHALL BE PROVIDED BY MANUFACTURER AND APPROVED BY ARCHITECT PRIOR TO ANY CONSTRUCTION.	COST ALUMINUM WITH LUMINARE ACORN AND MITER AVAILABLE UP TO 10' HIGHS UP TO 100' (18) PLUS LUMINARE AVAILABLE UP TO 200' W/ACROSSCUT, 175' W/ACROSSCUT, 175' W/ACROSSCUT.



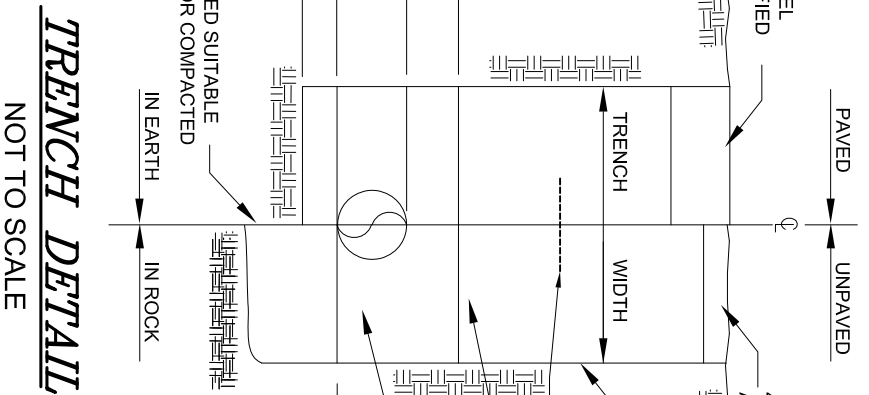
STREET LIGHT DETAIL
NOT TO SCALE



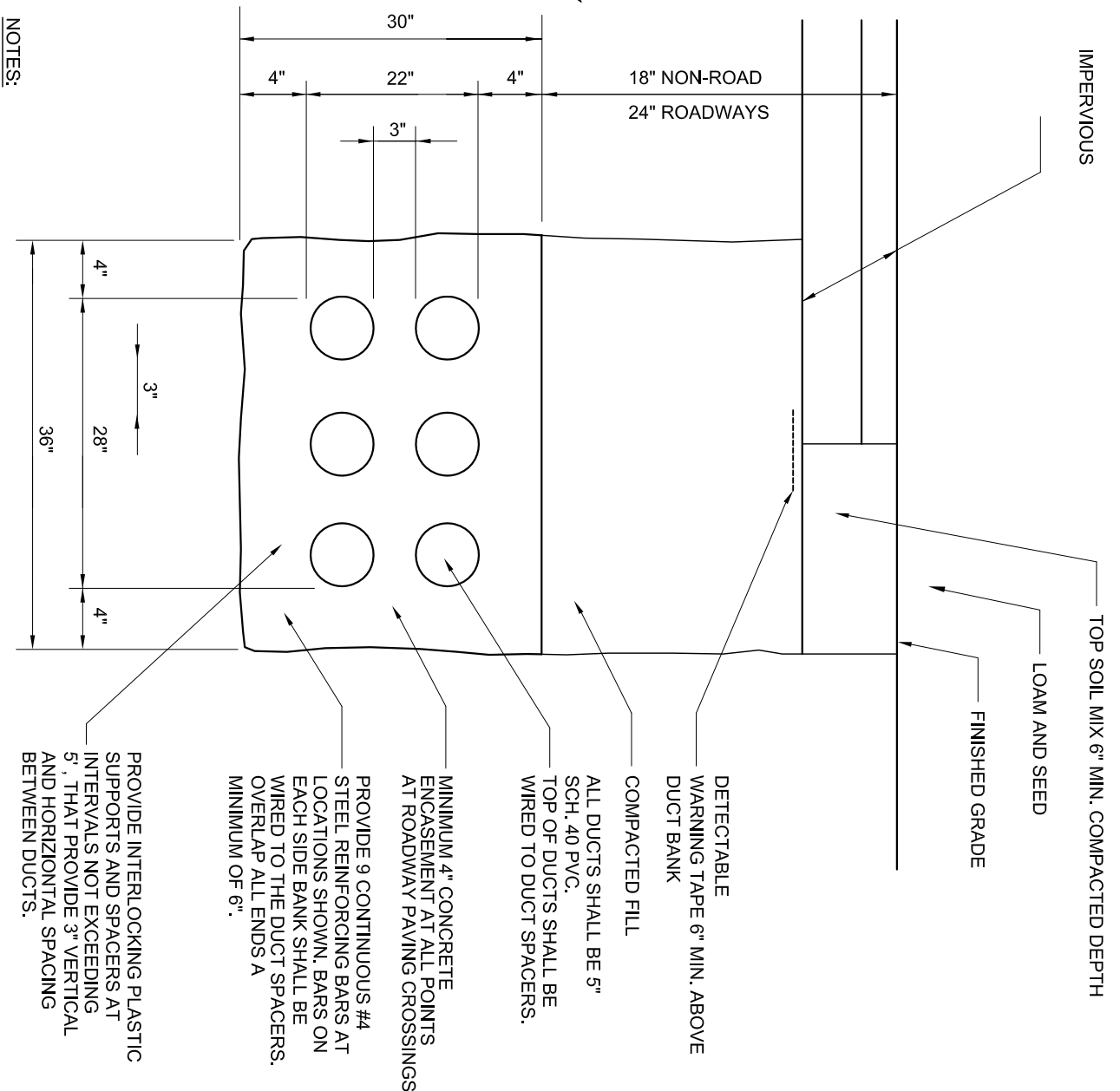
HYDRANT DETAIL
NOT TO SCALE



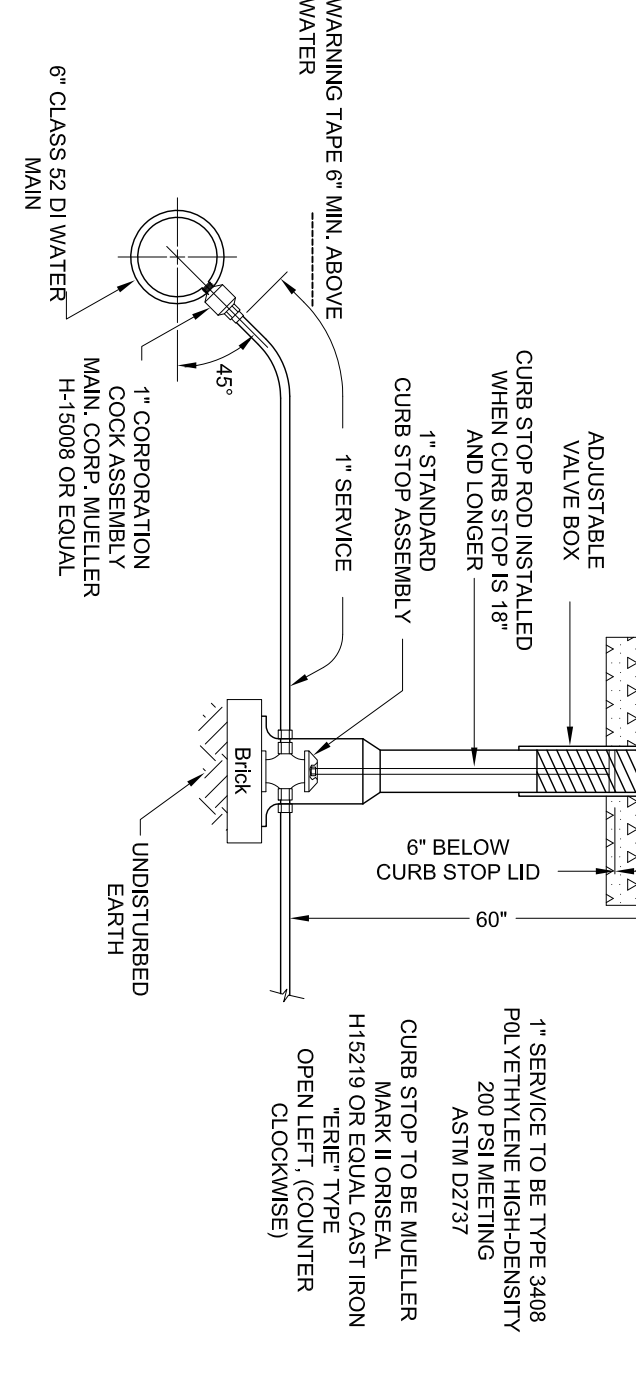
CAPE COD CURB DETAIL
NOT TO SCALE



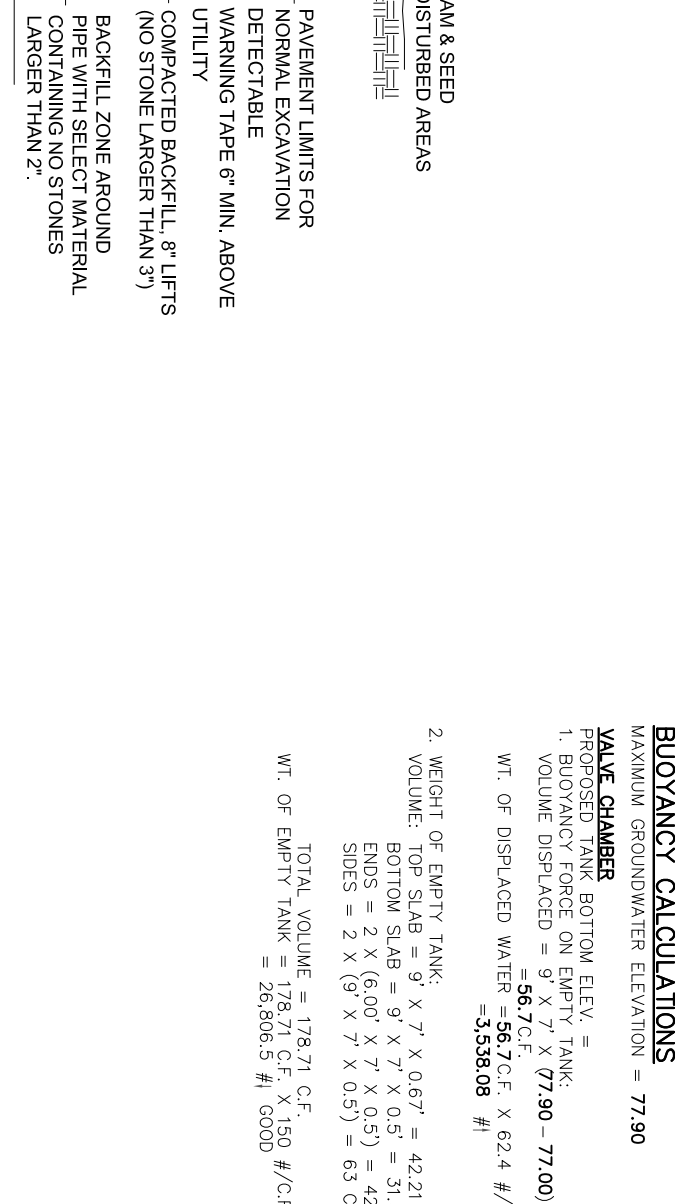
TRENCH DETAIL
NOT TO SCALE



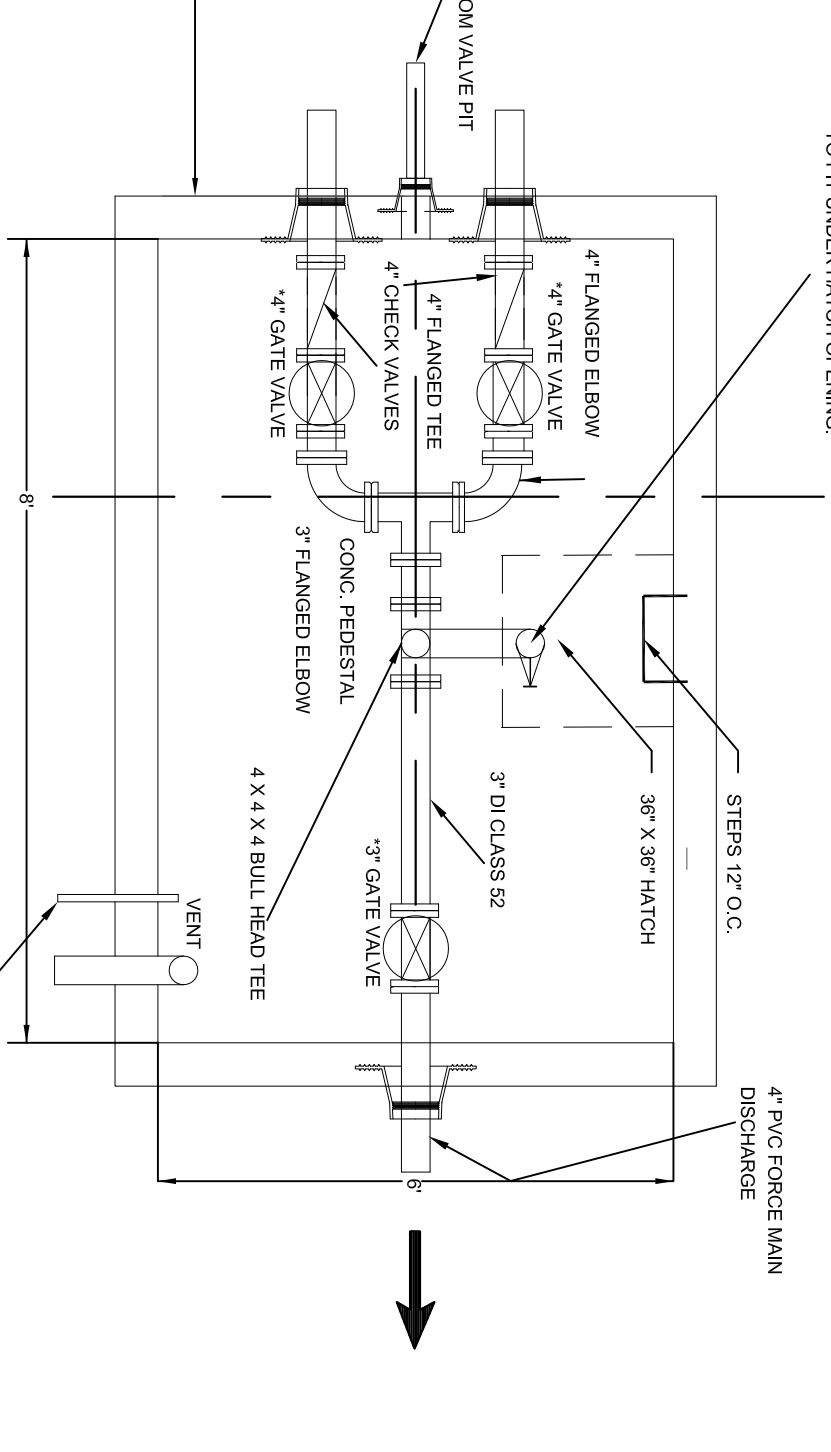
UTILITY TRENCH DETAIL
NOT TO SCALE



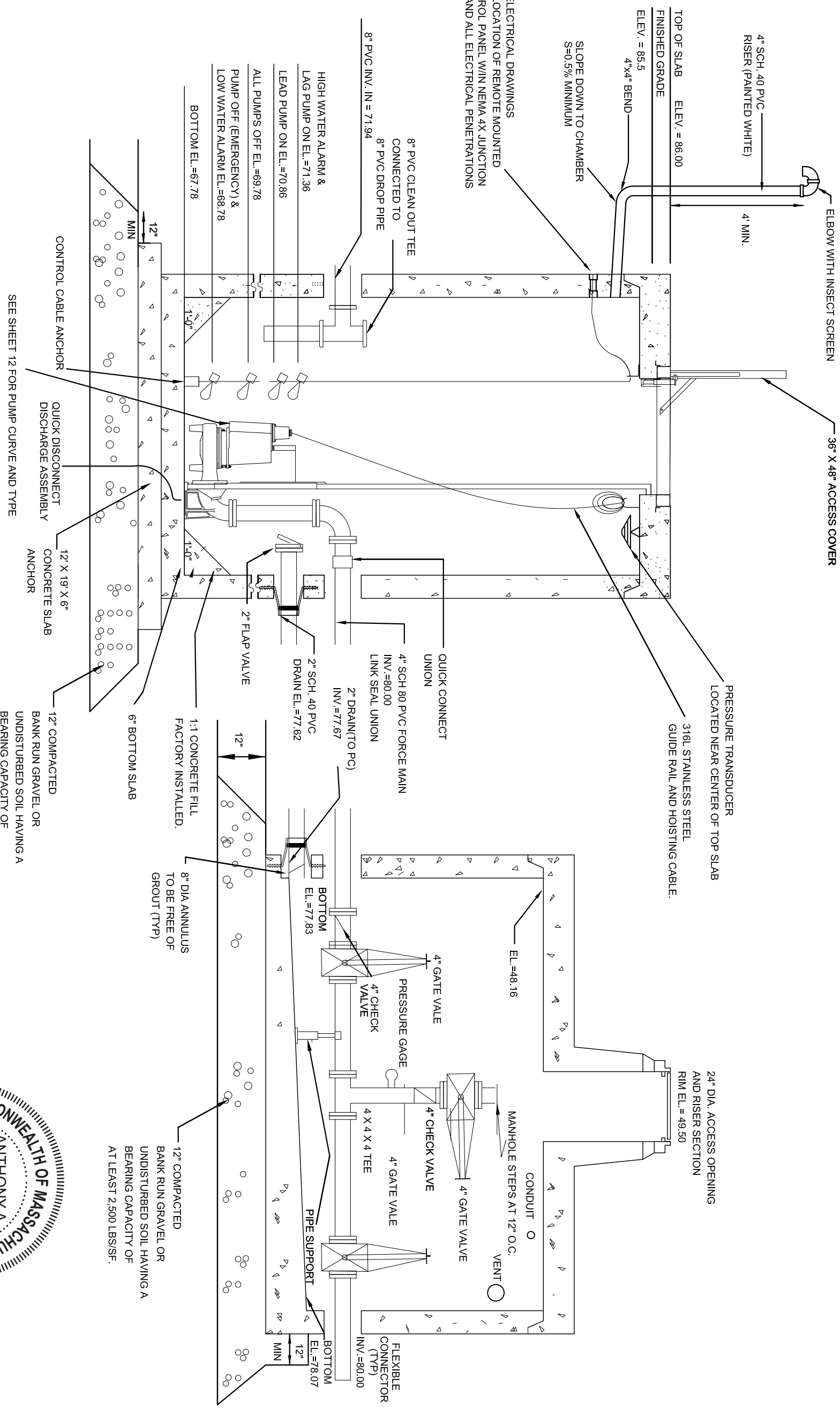
WATER SERVICE DETAIL
NOT TO SCALE



PUMP STATION PLAN
NOT TO SCALE



VALVE CHAMBER PLAN
NOT TO SCALE



PUMP STATION DETAIL
NOT TO SCALE

BIOVOLUME CALCULATIONS

WATER STORAGE WATER ELEVATION = 77.90

PROPOSED PUMP BOTTOM ELEV. = 77.00

PROPOSED PUMP TOP ELEV. = 77.00

1. VOLUME DISPLACED = 10.5' X 7.0' X 0.5' = 36.75 CF

WT. OF DISPLACED WATER = 36.75 CF / 6.24 #/CF = 5.89 #

2. WEIGHT OF EMPTY TANK:

VOLUME TOP SLAB = 9' X 7' X 0.2' = 12.6 CF = 42.21 #

VOLUME ENDOS = 2 X (6.0' X 1.1' X 0.5') = 6.6 CF = 20.7 #

VOLUME ENDOS = 2 X (6.0' X 7' X 0.5') = 42 CF = 130.8 #

FILES = 2 X (7' X 1' X 0.5') = 7 CF = 21.8 #

TOTAL VOLUME = 178.71 CF / 150 #/CF = 1.19 #

WT. OF EMPTY TANK = 20,000 # @ 0.000 #/CF

BIOVOLUME CALCULATIONS

WATER STORAGE WATER ELEVATION = 77.90

PROPOSED PUMP BOTTOM ELEV. = 77.00

PROPOSED PUMP TOP ELEV. = 77.00

1. VOLUME DISPLACED = 10.5' X 7.0' X 0.5' = 36.75 CF

WT. OF DISPLACED WATER = 36.75 CF / 6.24 #/CF = 5.89 #

2. WEIGHT OF EMPTY TANK:

VOLUME TOP SLAB = 9' X 7' X 0.2' = 12.6 CF = 42.21 #

VOLUME ENDOS = 2 X (6.0' X 1.1' X 0.5') = 6.6 CF = 20.7 #

VOLUME ENDOS = 2 X (6.0' X 7' X 0.5') = 42 CF = 130.8 #

FILES = 2 X (7' X 1' X 0.5') = 7 CF = 21.8 #

TOTAL VOLUME = 127.10 CF / 150 #/CF = 0.85 #

WT. OF EMPTY TANK = 20,000 # @ 0.000 #/CF

PUMP CALCULATIONS

DESIGN FLOW = 910 GPM

VOLUME OF STORAGE PIPE = 11.4' X (7.0' FT)² X 1.651' = 14,222.5

VOLUME OF STORAGE PIPE = 14.222 CF X 7.48 GAL/CF = 106,380 GAL

(11.50 GPM) X 180 = 2,070 GPM

154,450 GPM - 18,430 = 136,020

7.48 GAL/FT³

DEPTH ROUNDED PER CODE = 9' X 10' = 144 SF

AREA OF PUMP CHAMBER = 144 SF

DEPTH ROUNDED PER CODE = 144 SF / 144 = 1.0'

MINIMUM NET HEAD REQUIRED = 14.00 SF (ELEVATION OF INTERIOR BOTTOM OF PUMP CHAMBER)

FRICTION LOSS = 85.13 - 67.78 = 17.35

USE 14.5\"/>



2/7/2022

REVISIONS:	NO.	DESCRIPTION	DATE

PROJECT TITLE:

THE COTTAGES
AT
OLD OAKEN BUCKET
AT
#279-281 OLD OAKEN
BUCKET ROAD
SCITUATE, MA

CONSTRUCTION
DETAILS 3
PLAN

PREPARED BY:
PARCEL 41-1-3-D
PARCEL 41-1-3-0

REGISTERED LAND SURVEYORS
& CIVIL ENGINEERS
167 R SUMMER STREET
KINGSTON, MA 02364
781-582-2185
mark@ssscinc.net

LOVEDALE, LLC
107 EAST ST.
DUXBURY, MA 02332

DATE: FEBRUARY 7, 2022
COMP/DESIGN: A. ESPPOSITO
CHECK: M. D. CASEY
DRAWN: A. ESPPOSITO
FIELD: LILIPS
APPROVED: M. D. CASEY
DWG. NO. 1908 DET3
JOB NO. 1908

SHEET 13 OF 13