



- 1 BEDROOM UNIT
- 2 BEDROOM UNIT
- 3 BEDROOM UNIT
- OFFICE/RETAIL SPACE

**TOTAL BUILDING AREA**  
36,045 SQ. FT

**22 RESIDENTIAL UNITS**  
13 ONE BEDROOM UNITS  
8 TWO BEDROOM UNITS  
1 THREE BEDROOM UNITS

**6450 SF COMMERCIAL**

1ST FL. AREA : 9985 SQ. FT.  
2ND FL. AREA : 10,200 SQ. FT.  
3RD FL. AREA : 9550 SQ. FT.  
4TH FL. AREA : 4630 SQ. FT.  
ROOFTOP AMENITY ACCESS : 1680 SQ. FT.

① FIRST FLOOR PLAN  
3/16" = 1'-0"

AXIOM ARCHITECTS  
2048 WASHINGTON STREET  
HANOVER, MASSACHUSETTS 02339  
(781)871-2101 (781)871-7509

**NEW MIXED-USE BUILDING**  
61 NEW DRIFTWAY, SCITUATE MA

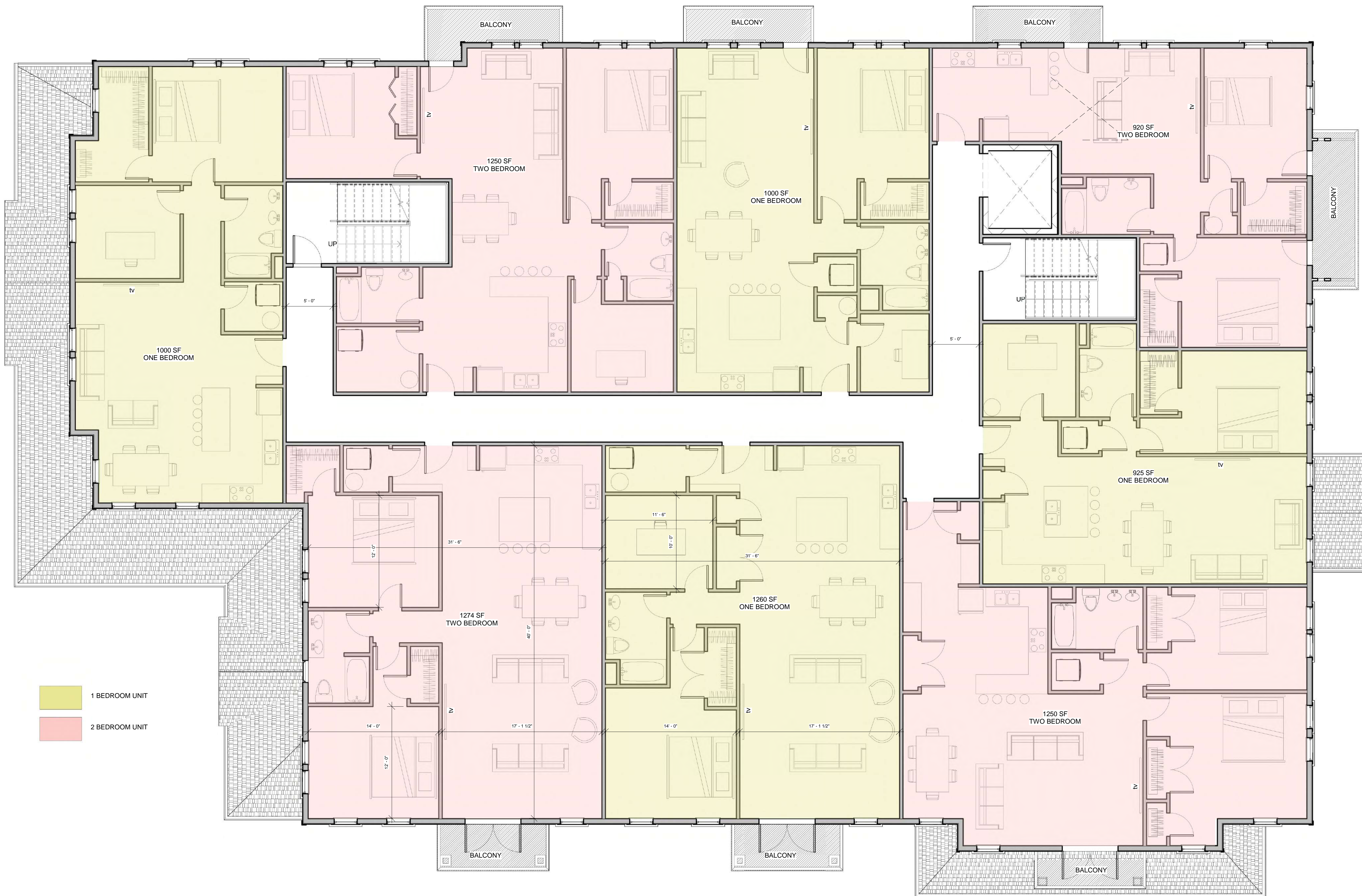


DESIGN REVIEW SET

FLOOR PLANS

DATE: NOVEMBER, 2022  
SCALE: 3/16" = 1'-0"  
FILE: 2104

A101



1 BEDROOM UNIT  
 2 BEDROOM UNIT

① 2ND FLOOR  
 3/16" = 1'-0"

AXIOM ARCHITECTS  
 2048 WASHINGTON STREET  
 HANOVER, MASSACHUSETTS 02339  
 (781)871-2101 (781)871-7509

**NEW MIXED-USE BUILDING**  
 61 NEW DRIFTWAY, SCITUATE MA



DESIGN REVIEW SET

FLOOR PLANS

DATE: NOVEMBER, 2022  
 SCALE: 3/16" = 1'-0"  
 FILE: 2104

A102



1 BEDROOM UNIT  
 2 BEDROOM UNIT

① 3RD FLOOR  
 3/16" = 1'-0"

AXIOM ARCHITECTS

AXIOM ARCHITECTS  
 2048 WASHINGTON STREET  
 HANOVER, MASSACHUSETTS 02339  
 (781)871-2101 (781)871-7509

**NEW MIXED-USE BUILDING**  
 61 NEW DRIFTWAY, SCITUATE MA

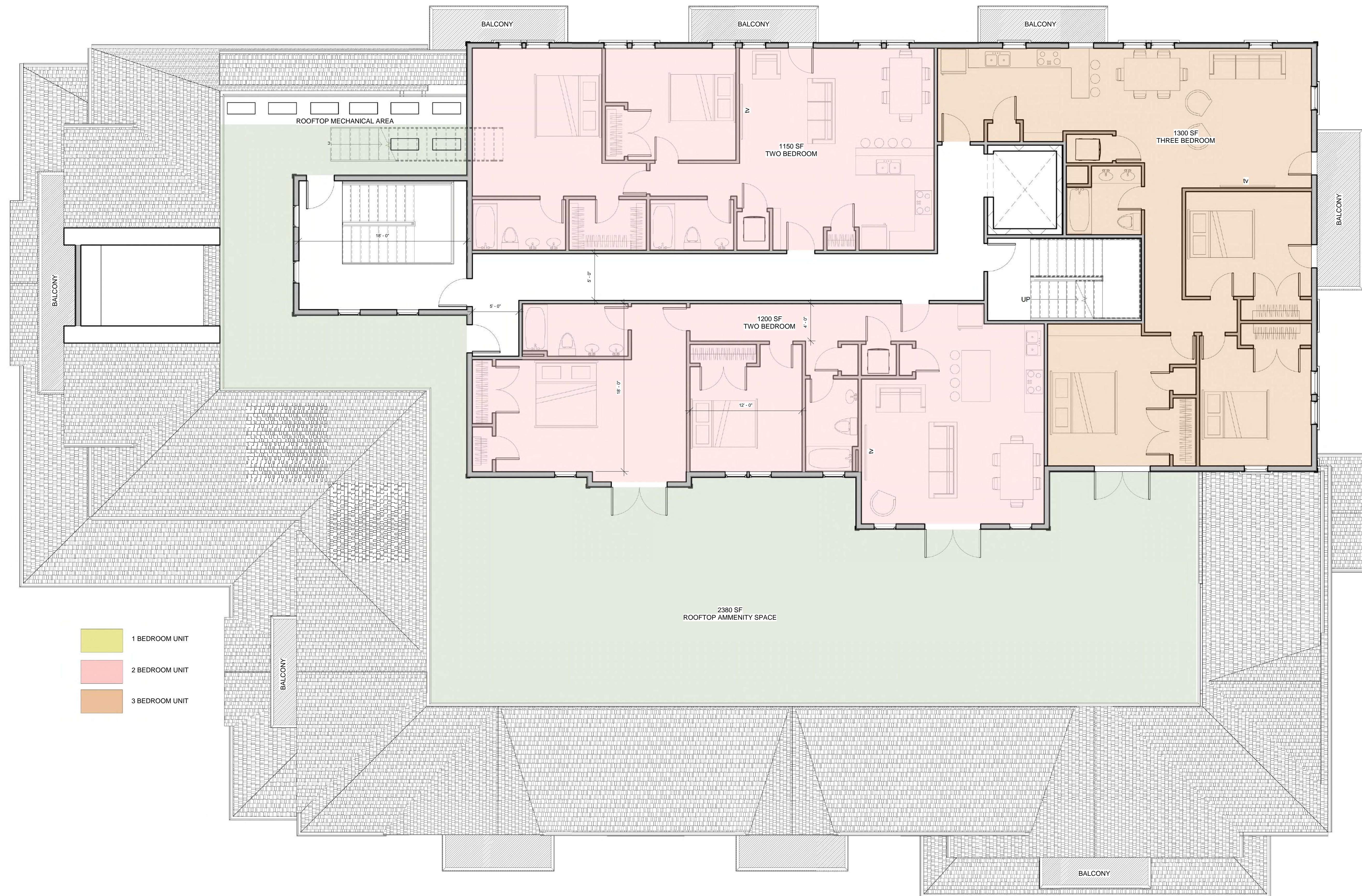


DESIGN REVIEW SET

FLOOR PLANS

DATE: NOVEMBER, 2022  
 SCALE: 3/16" = 1'-0"  
 FILE: 2104

A103



- 1 BEDROOM UNIT
- 2 BEDROOM UNIT
- 3 BEDROOM UNIT

① 4TH FLOOR  
3/16" = 1'-0"

AXIOM ARCHITECTS  
 AXIOM ARCHITECTS  
 2048 WASHINGTON STREET  
 HANOVER, MASSACHUSETTS 02339  
 (781)871-2101 (781)871-7509

**NEW MIXED-USE BUILDING**  
 61 NEW DRIFTWAY, SCITUATE MA



DESIGN REVIEW SET

FLOOR PLANS

DATE: NOVEMBER, 2022  
 SCALE: 3/16" = 1'-0"  
 FILE: 2104

A104

**NEW MIXED-USE BUILDING**  
61 NEW DRIFTWAY, SCITUATE MA

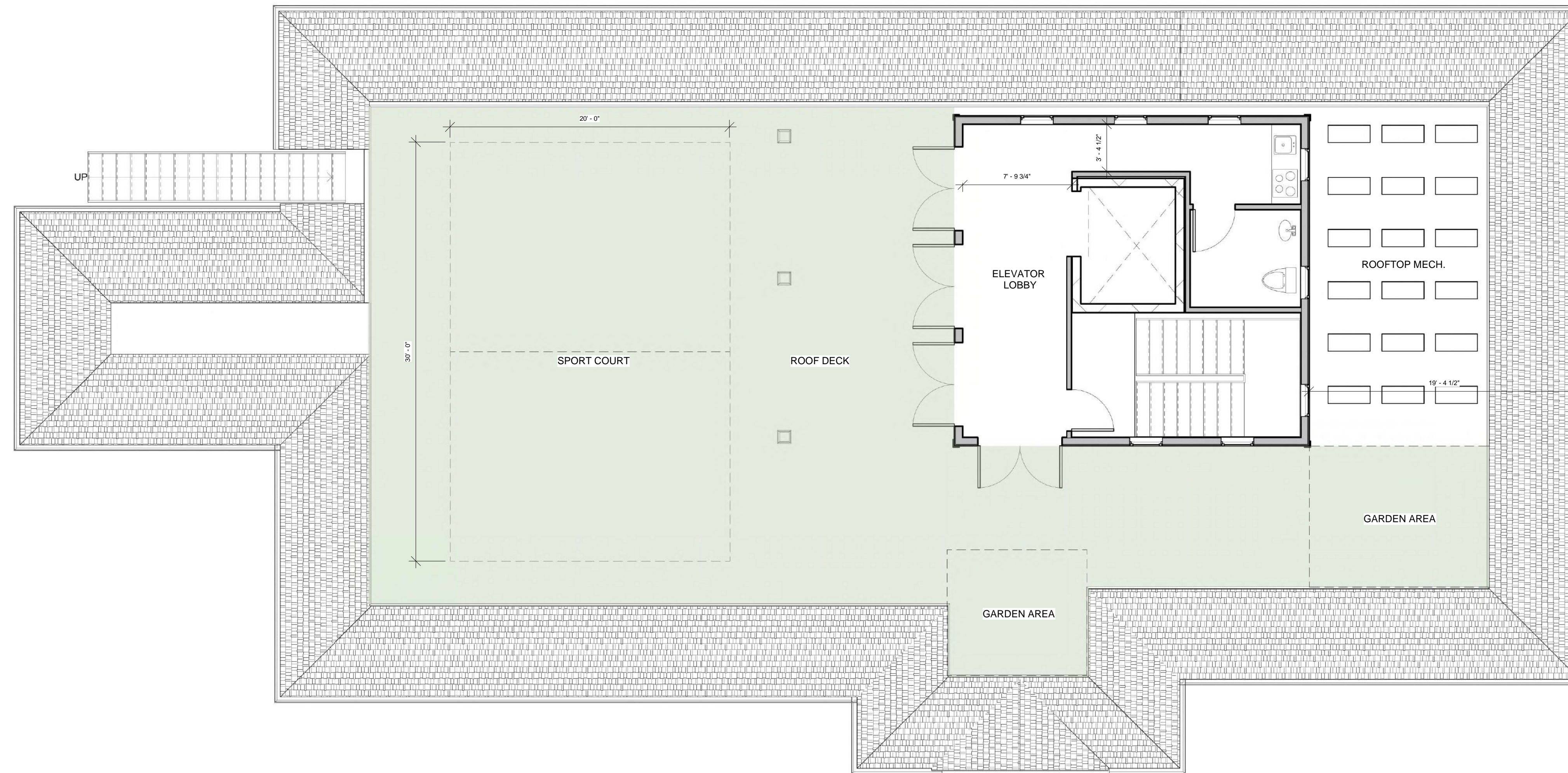


DESIGN REVIEW  
SET

FLOOR PLANS

DATE: NOVEMBER, 2022  
SCALE: 3/16" = 1'-0"  
FILE: 2104

A105



① ROOFTOP AMENITY ACCESS  
3/16" = 1'-0"

**NEW MIXED-USE BUILDING**  
61 NEW DRIFTWAY, SCITUATE MA



DESIGN REVIEW SET

BUILDING ELEVATIONS

DATE: NOVEMBER, 2022  
SCALE: 3/16" = 1'-0"  
FILE: 2104

A106



① FRONT ELEVATION (DRIFTWAY)  
3/16" = 1'-0"

BUILDING HEIGHT REQUIREMENT REFERENCE	
<b>TOTAL BUILDING HEIGHT:</b>	
REQUIREMENT - MAXIMUM 4 STORY, 40' - 0"	
PROPOSED - 4 STORY, 39' - 5" TO ROOF MIDPOINT	
<b>EAVE / PARAPET HEIGHT @ STREET:</b>	
REQUIREMENT - MAXIMUM 25' - 0"	
PROPOSED - MAIN BUILDING EAVE HEIGHT @ 19' - 10 1/2"	
<b>5TH LEVEL ACCESS PAVILION HEIGHT:</b>	
REQUIREMENT - MAXIMUM 10' - 0"	
PROPOSED - 9' - 11 1/2" TO MIDPOINT OF SLOPED ROOF	



② FRONT ELEVATION (NEW DRIFTWAY)  
3/16" = 1'-0"

**NEW MIXED-USE BUILDING**  
61 NEW DRIFTWAY, SCITUATE MA



DESIGN REVIEW SET

BUILDING ELEVATIONS

DATE: NOVEMBER, 2022  
SCALE: 3/16" = 1'-0"  
FILE: 2104

A107



② SOUTH ELEVATION  
3/16" = 1'-0"



① EAST ELEVATION (STREET VIEW)  
3/16" = 1'-0"