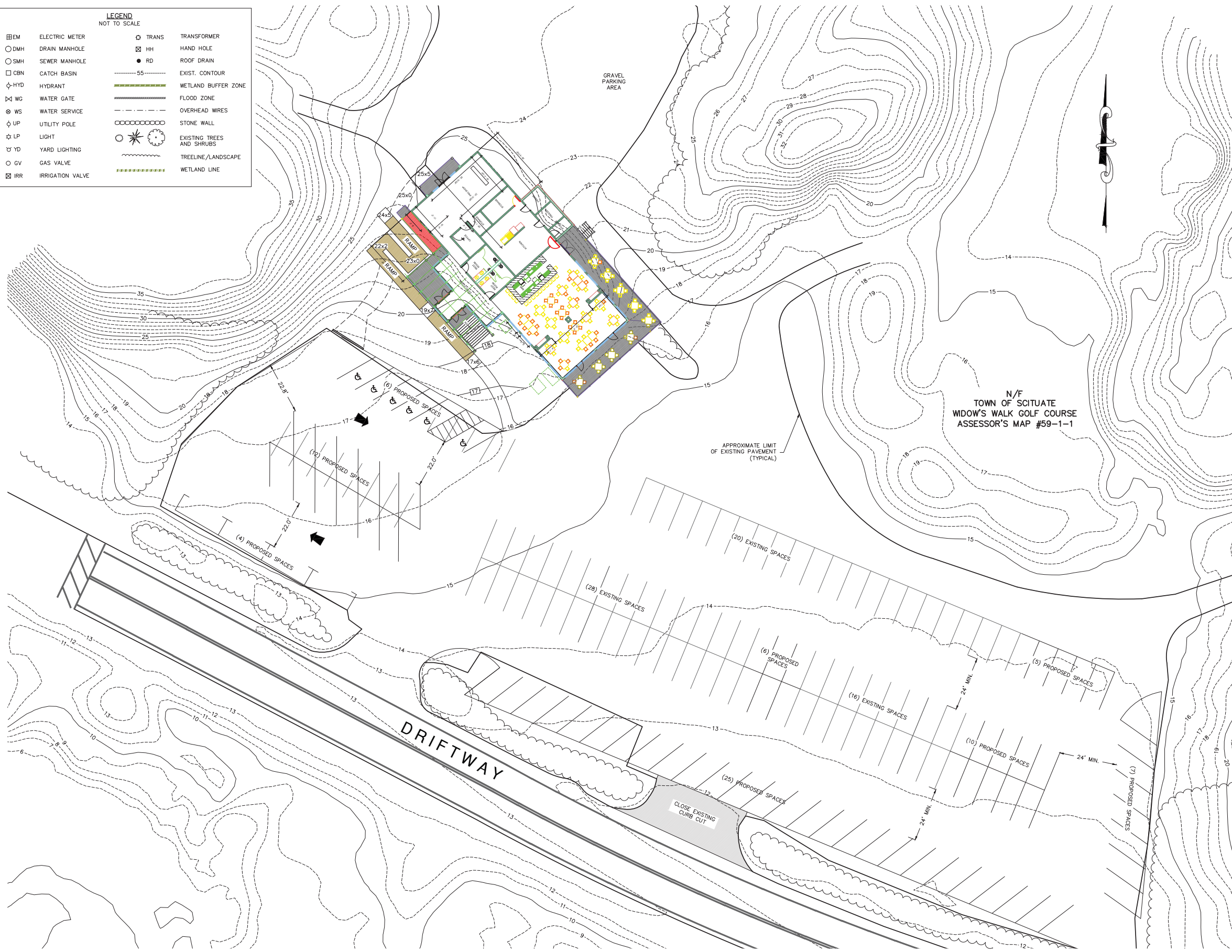


LEGEND NOT TO SCALE				
◻	ELECTRIC METER	◻	TRANS	TRANSFORMER
○	DMH	○	HH	HAND HOLE
○	SMH	●	RD	ROOF DRAIN
□	CBN	---	55	EXIST. CONTOUR
⊕	HYD	---		WETLAND BUFFER ZONE
⊗	WG	---		FLOOD ZONE
⊙	WS	---		OVERHEAD WIRES
⊕	UP	○		STONE WALL
☆	LP	⊙		EXISTING TREES AND SHRUBS
⊕	YD	---		TREELINE/LANDSCAPE
○	GV	---		WETLAND LINE
⊗	IRR			



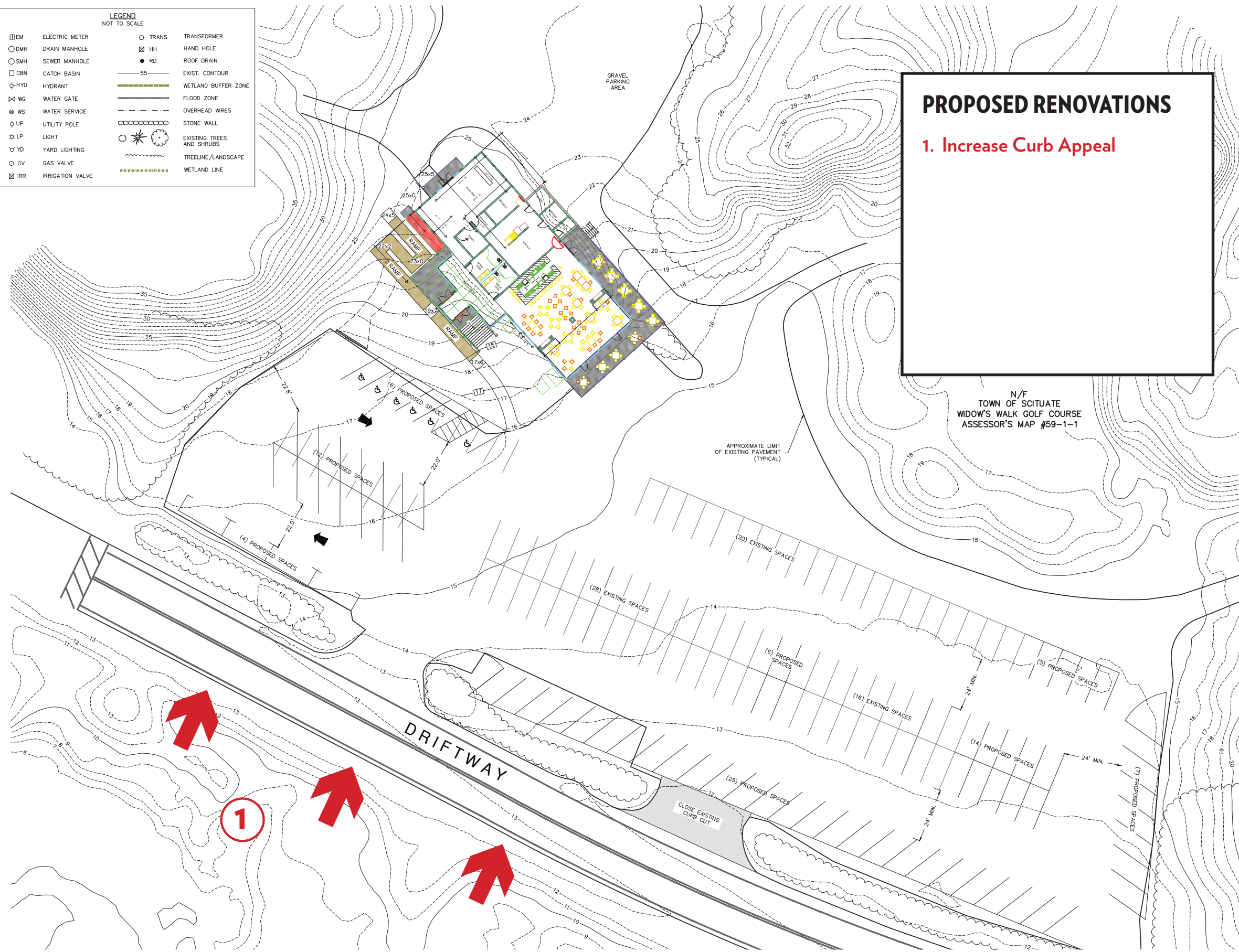
N/F  
TOWN OF SCITUATE  
WIDOW'S WALK GOLF COURSE  
ASSESSOR'S MAP #59-1-1

# Widow's Walk Clubhouse

## SITE PLAN

LEGEND NOT TO SCALE			
◻	ELECTRIC METER	◻	TRANSFORMER
○	DMH DRAIN MANHOLE	⊠	HH HAND HOLE
○	SMH SEWER MANHOLE	●	RD ROOF DRAIN
□	CBN CATCH BASIN	---	EXIST. CONTOUR
⊕	HYD HYDRANT	---	WETLAND BUFFER ZONE
⊗	WG WATER GATE	---	FLOOD ZONE
⊙	WS WATER SERVICE	---	OVERHEAD WIRES
⊕	UP UTILITY POLE	⊖	STONE WALL
☆	LP LIGHT	⊙	EXISTING TREES AND SHRUBS
⊕	YD YARD LIGHTING	---	TREELINE/LANDSCAPE
○	GV GAS VALVE	---	WETLAND LINE
⊗	IRR IRRIGATION VALVE		

**PROPOSED RENOVATIONS**  
**1. Increase Curb Appeal**



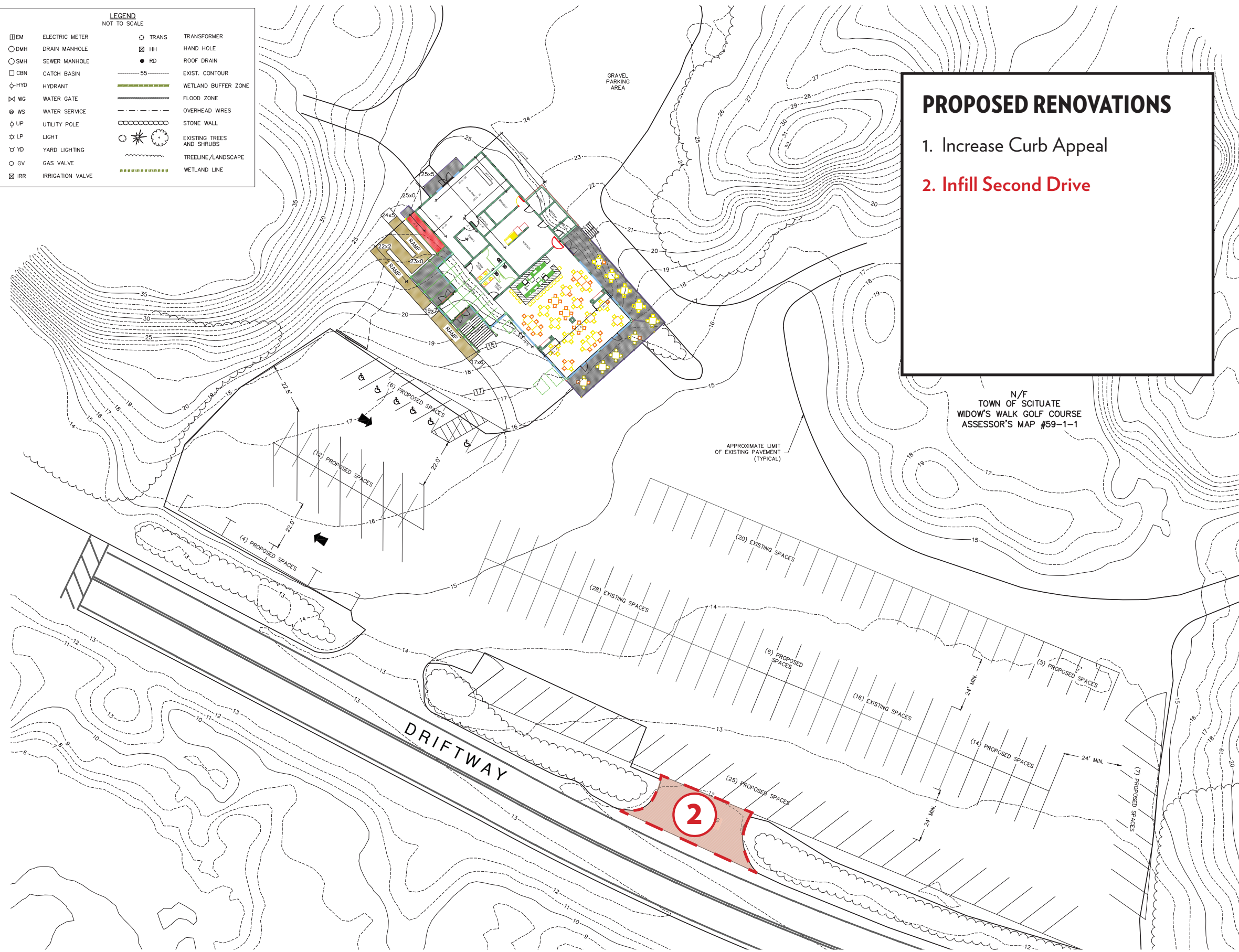
N/F  
TOWN OF SCITUATE  
WIDOW'S WALK GOLF COURSE  
ASSESSOR'S MAP #59-1-1



LEGEND NOT TO SCALE			
◻ ELM	ELECTRIC METER	○ TRANS	TRANSFORMER
○ DMH	DRAIN MANHOLE	⊠ HH	HAND HOLE
○ SMH	SEWER MANHOLE	● RD	ROOF DRAIN
□ CBN	CATCH BASIN	---	EXIST. CONTOUR
⊕ HYD	HYDRANT	---	WETLAND BUFFER ZONE
⊗ WG	WATER GATE	---	FLOOD ZONE
⊙ WS	WATER SERVICE	---	OVERHEAD WIRES
⊕ UP	UTILITY POLE	⊠	STONE WALL
☆ LP	LIGHT	⊙	EXISTING TREES AND SHRUBS
⊕ YD	YARD LIGHTING	---	TREELINE/LANDSCAPE
○ GV	GAS VALVE	---	WETLAND LINE
⊗ IRR	IRRIGATION VALVE		

**PROPOSED RENOVATIONS**

1. Increase Curb Appeal
2. Infill Second Drive



N/F  
TOWN OF SCITUATE  
WIDOW'S WALK GOLF COURSE  
ASSESSOR'S MAP #59-1-1

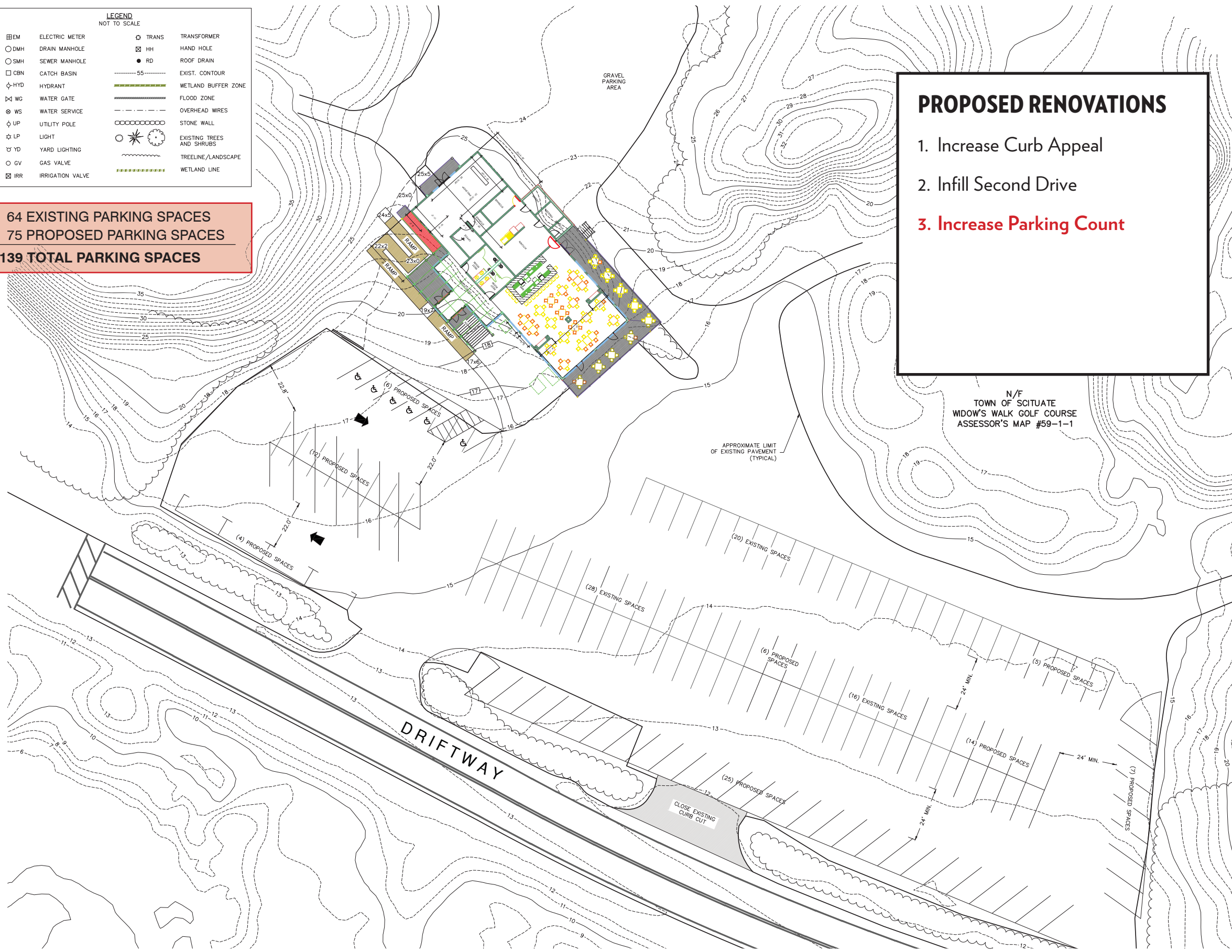
LEGEND NOT TO SCALE			
◻ EBM	ELECTRIC METER	○ TRANS	TRANSFORMER
○ DMH	DRAIN MANHOLE	⊠ HH	HAND HOLE
○ SMH	SEWER MANHOLE	● RD	ROOF DRAIN
□ CBN	CATCH BASIN	---	EXIST. CONTOUR
⊕ HYD	HYDRANT	---	WETLAND BUFFER ZONE
⊗ WG	WATER GATE	---	FLOOD ZONE
⊕ WS	WATER SERVICE	---	OVERHEAD WIRES
⊕ UP	UTILITY POLE	⊠	STONE WALL
⊕ LP	LIGHT	⊕	EXISTING TREES AND SHRUBS
⊕ YD	YARD LIGHTING	---	TREELINE/LANDSCAPE
○ GV	GAS VALVE	---	WETLAND LINE
⊕ IRR	IRRIGATION VALVE		

**3**

64 EXISTING PARKING SPACES  
75 PROPOSED PARKING SPACES  
**139 TOTAL PARKING SPACES**

**PROPOSED RENOVATIONS**

1. Increase Curb Appeal
2. Infill Second Drive
3. Increase Parking Count

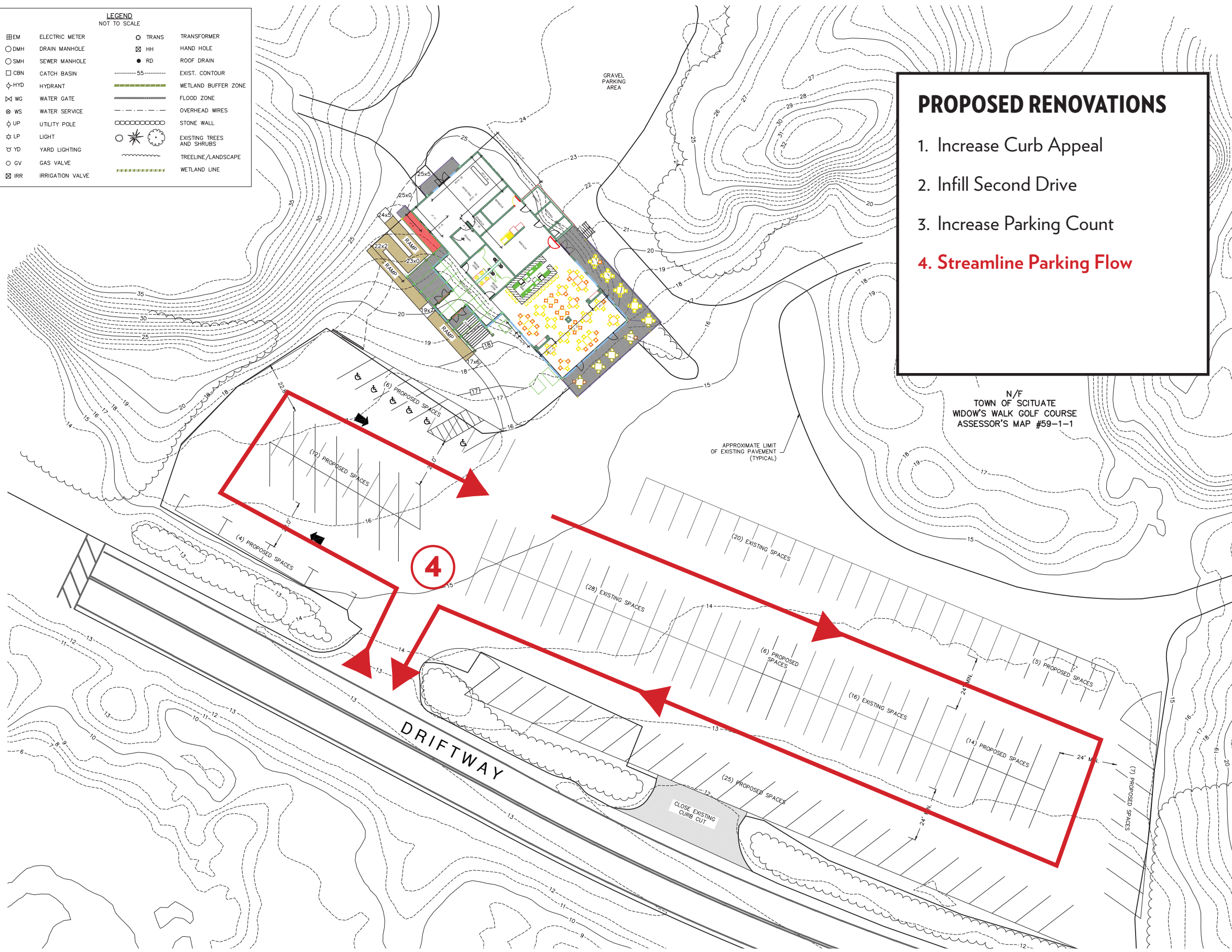


N/F  
TOWN OF SCITUATE  
WIDOW'S WALK GOLF COURSE  
ASSESSOR'S MAP #59-1-1

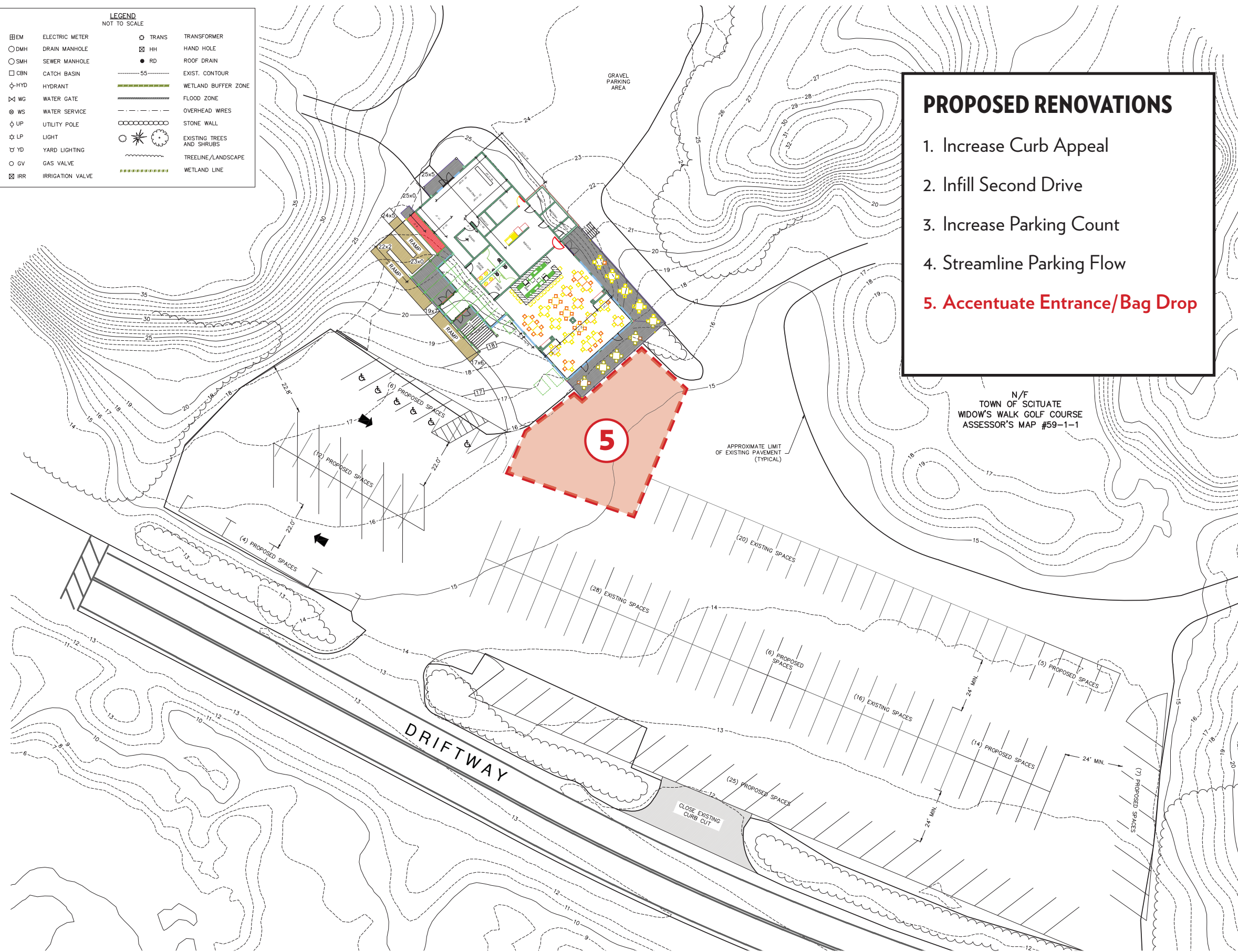


LEGEND NOT TO SCALE			
⊞	ELECTRIC METER	○ TRANS	TRANSFORMER
○ DMH	DRAIN MANHOLE	⊞ HH	HAND HOLE
○ SMH	SEWER MANHOLE	● RD	ROOF DRAIN
□ CBN	CATCH BASIN	---	EXIST. CONTOUR
⊕ HYD	HYDRANT	---	WETLAND BUFFER ZONE
⊗ WG	WATER GATE	---	FLOOD ZONE
⊙ WS	WATER SERVICE	---	OVERHEAD WIRES
⊕ UP	UTILITY POLE	⊞	STONE WALL
☆ LP	LIGHT	⊞	EXISTING TREES AND SHRUBS
⊕ YD	YARD LIGHTING	---	TREELINE/LANDSCAPE
○ GV	GAS VALVE	---	WETLAND LINE
⊞ IRR	IRRIGATION VALVE		

- ### PROPOSED RENOVATIONS
1. Increase Curb Appeal
  2. Infill Second Drive
  3. Increase Parking Count
  - 4. Streamline Parking Flow**



LEGEND NOT TO SCALE			
◻ ELM	ELECTRIC METER	○ TRANS	TRANSFORMER
○ DMH	DRAIN MANHOLE	⊠ HH	HAND HOLE
○ SMH	SEWER MANHOLE	● RD	ROOF DRAIN
□ CBN	CATCH BASIN	---	EXIST. CONTOUR
⊕ HYD	HYDRANT	---	WETLAND BUFFER ZONE
⊗ WG	WATER GATE	---	FLOOD ZONE
⊕ WS	WATER SERVICE	---	OVERHEAD WIRES
⊕ UP	UTILITY POLE	⊖	STONE WALL
☆ LP	LIGHT	⊙	EXISTING TREES AND SHRUBS
⊕ YD	YARD LIGHTING	---	TREELINE/LANDSCAPE
○ GV	GAS VALVE	---	WETLAND LINE
⊗ IRR	IRRIGATION VALVE		



- PROPOSED RENOVATIONS**
1. Increase Curb Appeal
  2. Infill Second Drive
  3. Increase Parking Count
  4. Streamline Parking Flow
  5. Accentuate Entrance/Bag Drop

N/F  
TOWN OF SCITUATE  
WIDOW'S WALK GOLF COURSE  
ASSESSOR'S MAP #59-1-1

# Widow's Walk Clubhouse

## SITE PLAN

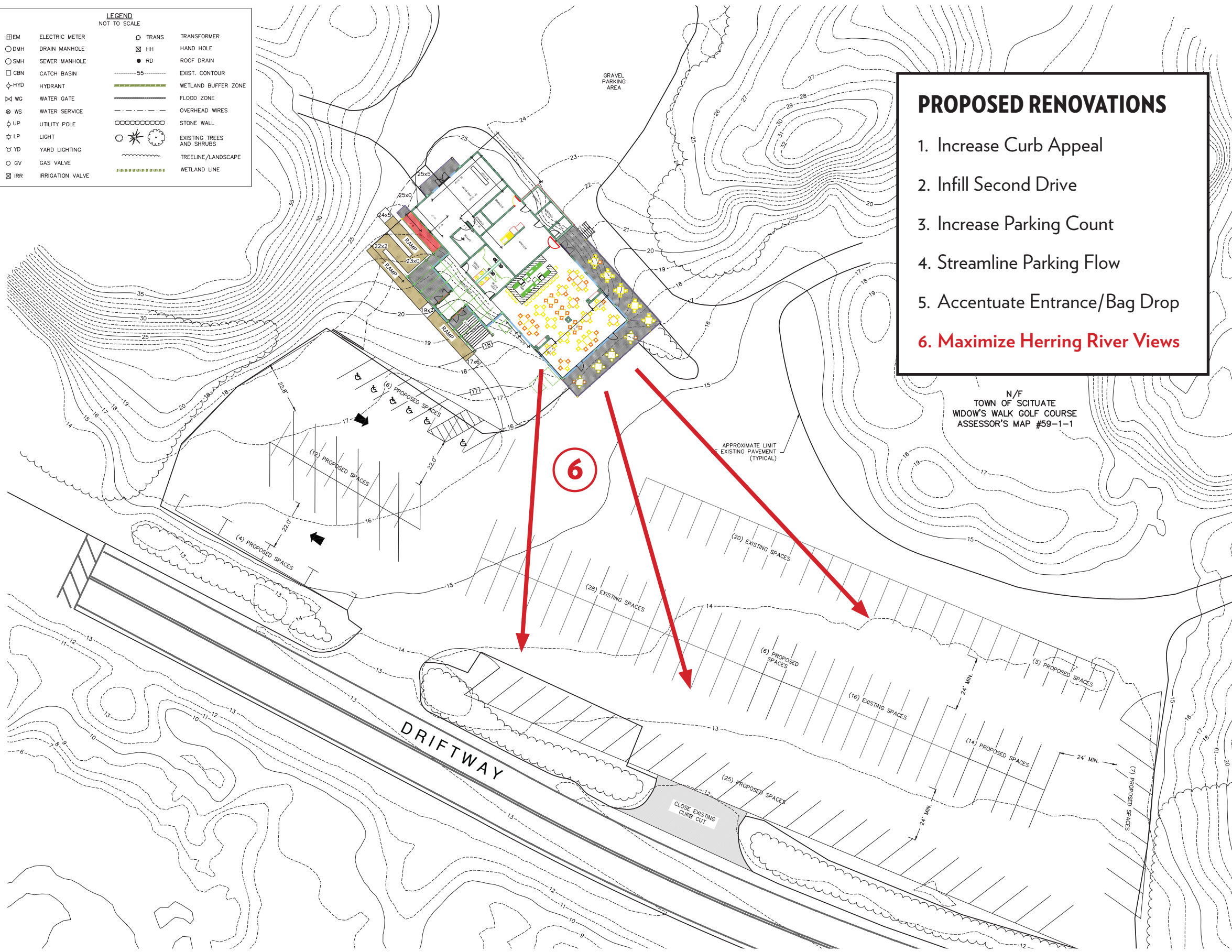
01-07-20

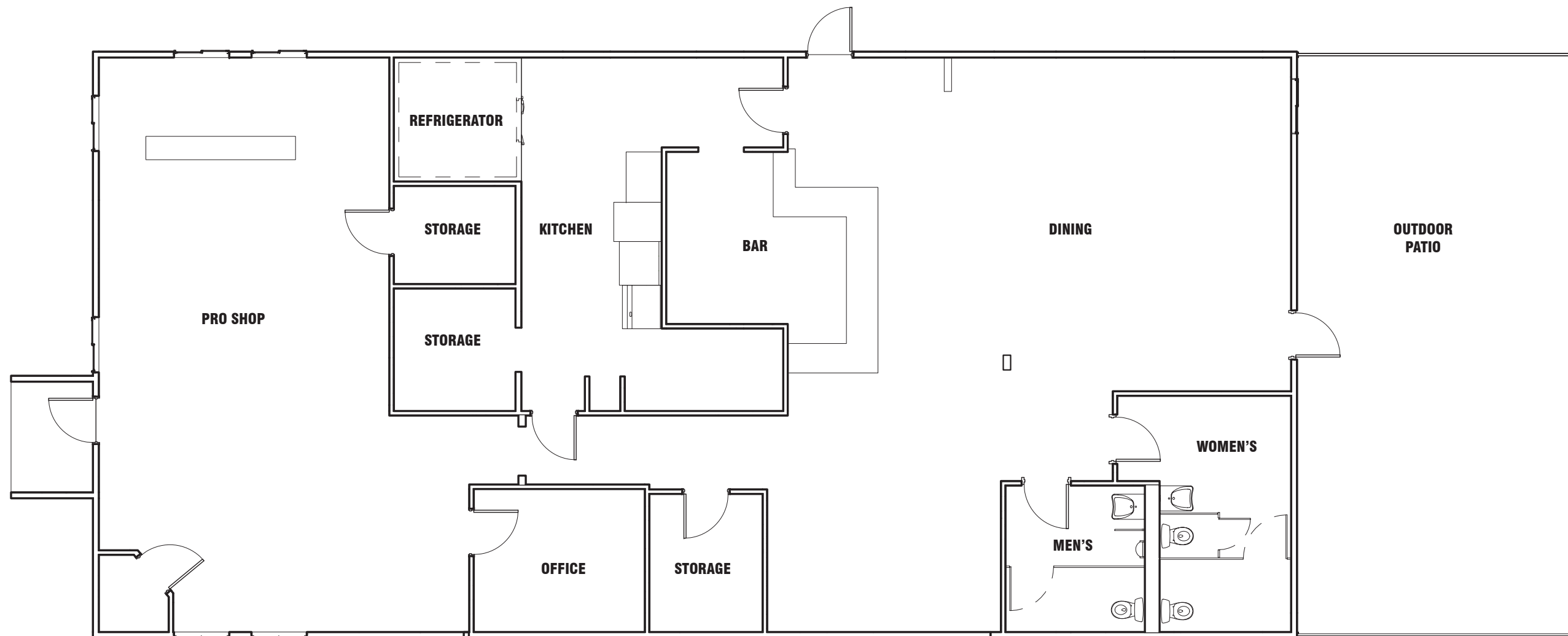




LEGEND NOT TO SCALE			
◻ ELM	ELECTRIC METER	◻ TRANS	TRANSFORMER
○ DMH	DRAIN MANHOLE	⊠ HH	HAND HOLE
○ SMH	SEWER MANHOLE	● RD	ROOF DRAIN
◻ CBN	CATCH BASIN	---	EXIST. CONTOUR
⊕ HYD	HYDRANT	---	WETLAND BUFFER ZONE
⊗ WG	WATER GATE	---	FLOOD ZONE
⊕ WS	WATER SERVICE	---	OVERHEAD WIRES
⊕ UP	UTILITY POLE	⊠	STONE WALL
⊕ LP	LIGHT	⊕	EXISTING TREES AND SHRUBS
⊕ YD	YARD LIGHTING	---	TREELINE/LANDSCAPE
○ GV	GAS VALVE	---	WETLAND LINE
⊗ IRR	IRRIGATION VALVE		

- ### PROPOSED RENOVATIONS
1. Increase Curb Appeal
  2. Infill Second Drive
  3. Increase Parking Count
  4. Streamline Parking Flow
  5. Accentuate Entrance/Bag Drop
  - 6. Maximize Herring River Views**





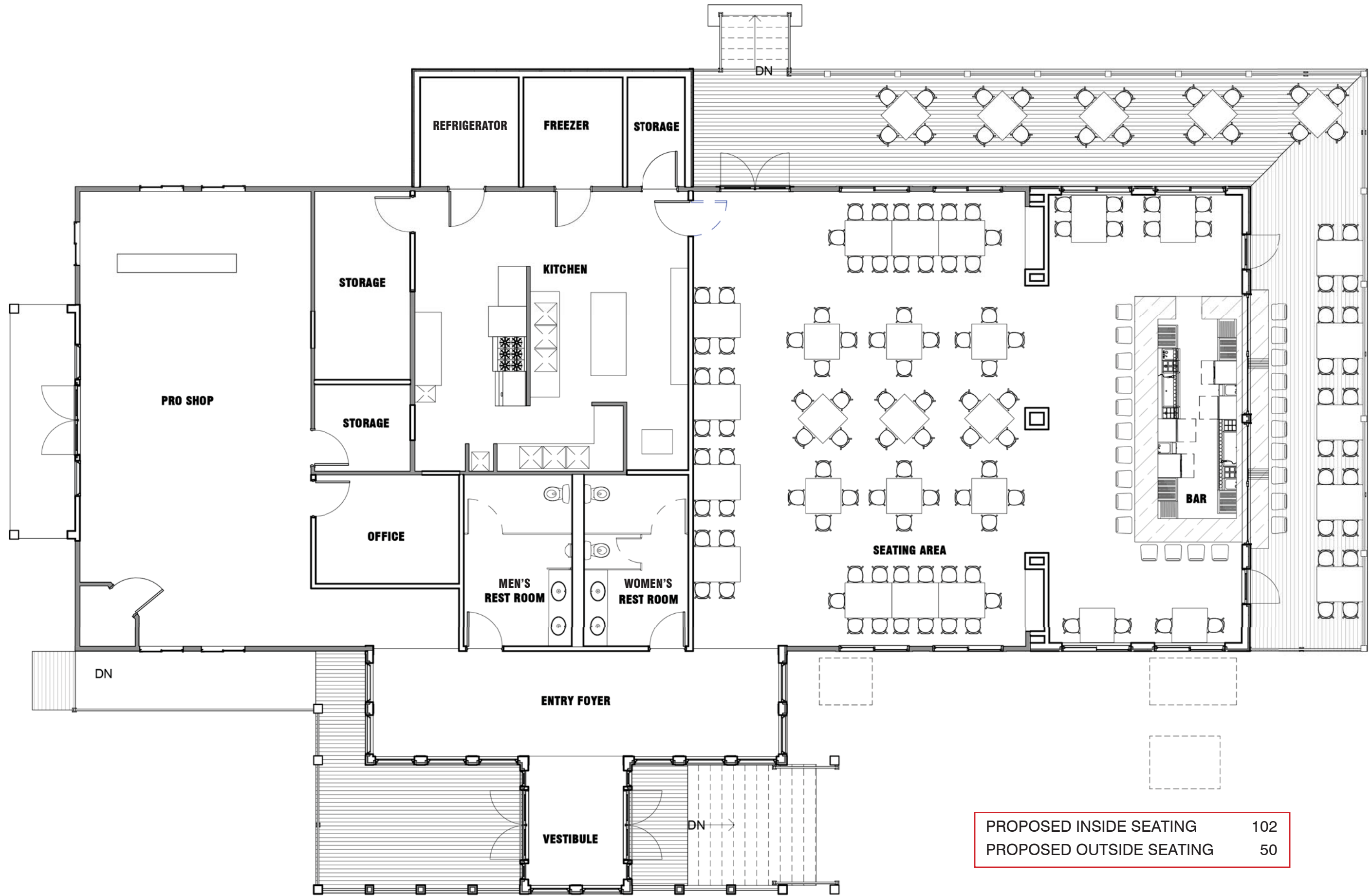
# Widow's Walk Clubhouse

EXISTING FLOOR PLAN

01-07-20







PROPOSED INSIDE SEATING	102
PROPOSED OUTSIDE SEATING	50



**Widow's Walk Clubhouse**  
ENTRANCE





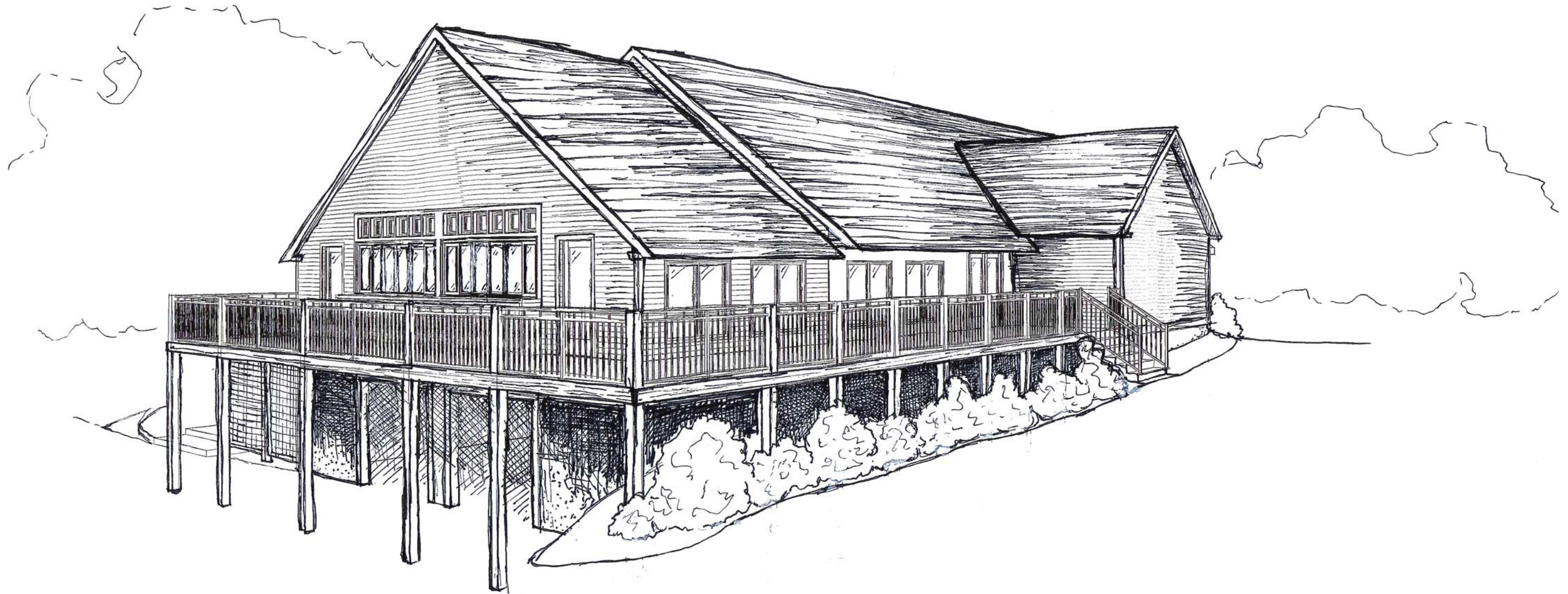
**Widow's Walk Clubhouse**

*PRO SHOP*

01-07-20







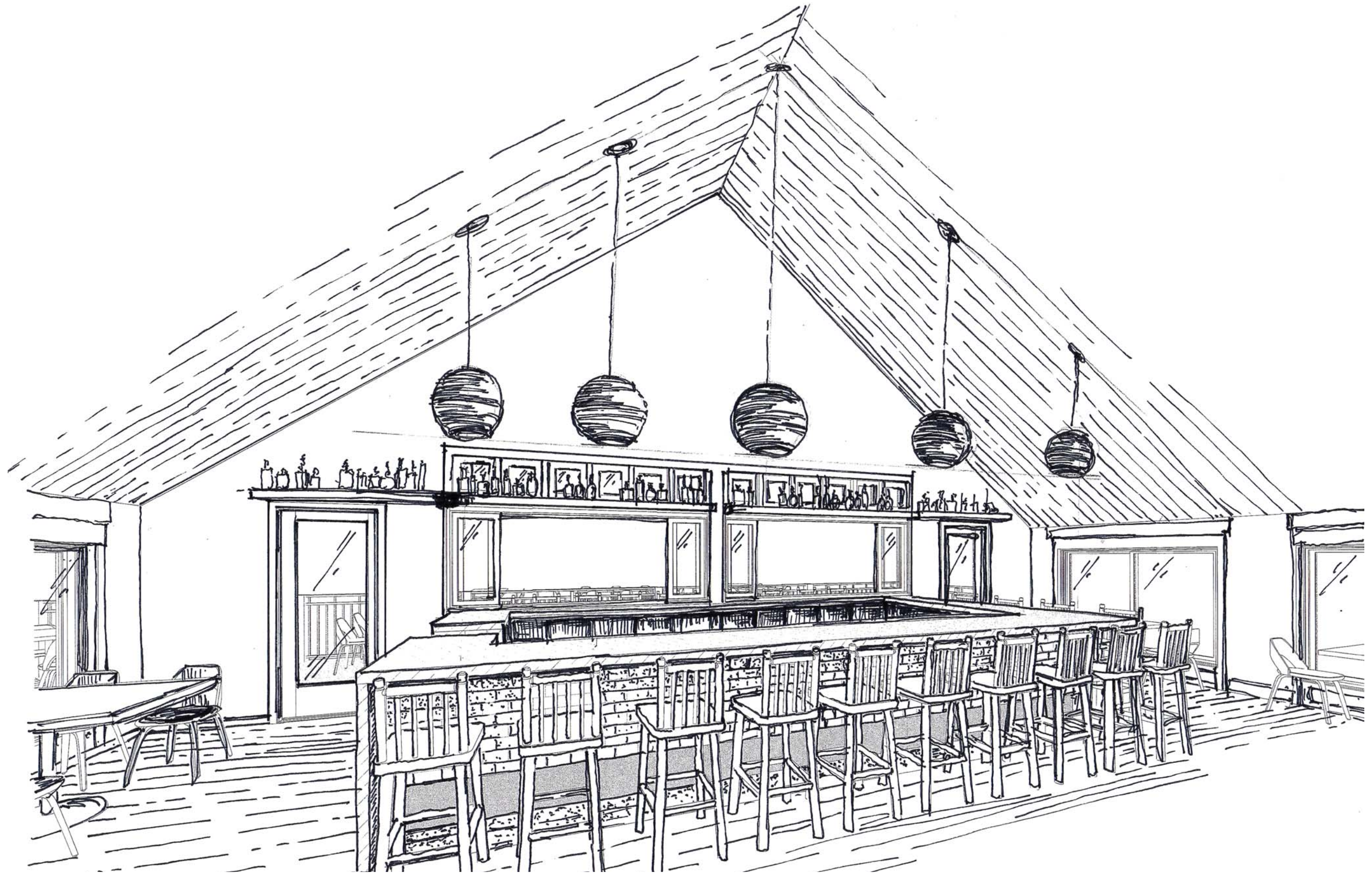
**Widow's Walk Clubhouse**

*EAST / REAR*

01-07-20







Widow's Walk Clubhouse

BAR AREA

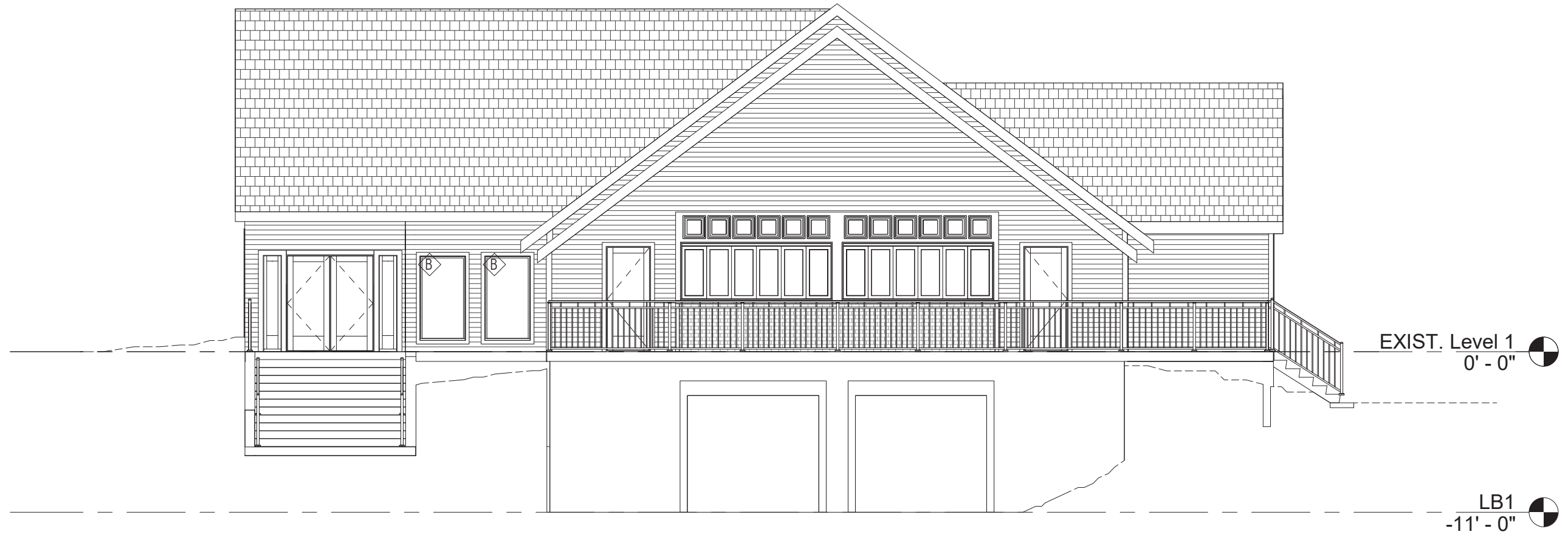
01-07-20



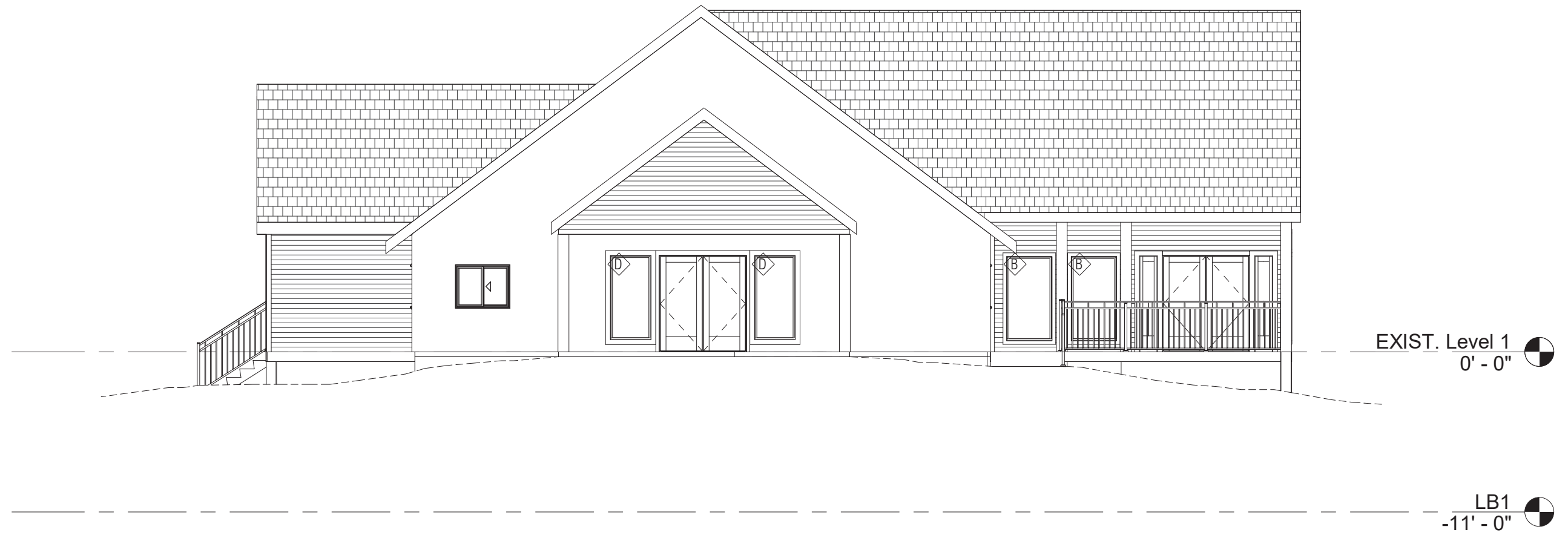


**Widow's Walk Clubhouse**  
*SOUTH ELEVATION*





**Widow's Walk Clubhouse**  
*EAST ELEVATION*



**Widow's Walk Clubhouse**  
WEST ELEVATION





LB1  
-11' - 0"



**Widow's Walk Clubhouse**

*NORTH ELEVATION*

01-07-20

