



Massachusetts
Division of Marine Fisheries
SHELLFISH SANITATION AND MANAGEMENT

Growing Area Code: MB5

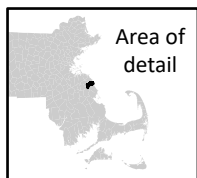
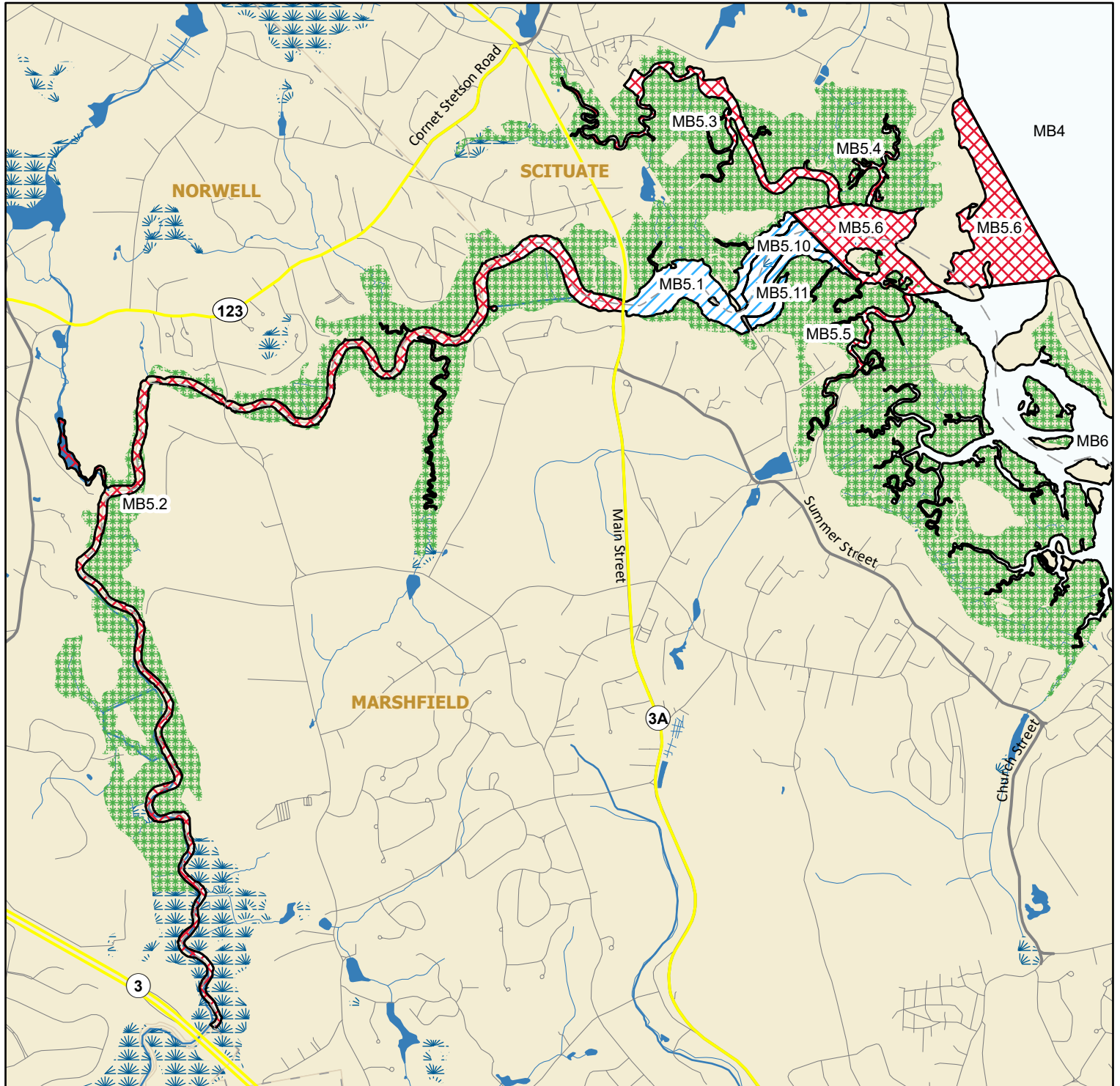
Area Name: NORTH RIVER

Area Town(s): Marshfield, Norwell, Scituate

Shellfish Area Classification

	Approved		Conditionally Restricted
	Conditionally Approved		Prohibited
	Restricted		

Produced: 6/7/2023



This map depicts the Marine Fisheries' sanitary classification of shellfish growing waters in accordance with the National Shellfish Sanitation Program. It does not indicate the current status, either "open" or "closed" to harvesting due to shellfish management or public health reasons. Always confirm the status with local authorities and/or Marine Fisheries. Information on this map may be out-dated or otherwise incorrect, and should not be relied upon for legal purposes.

- Marsh/Wetland
- Saltmarsh
- Pond/Lake/Reservoir
- Town Boundaries
- Stream/Ditch/Canal

