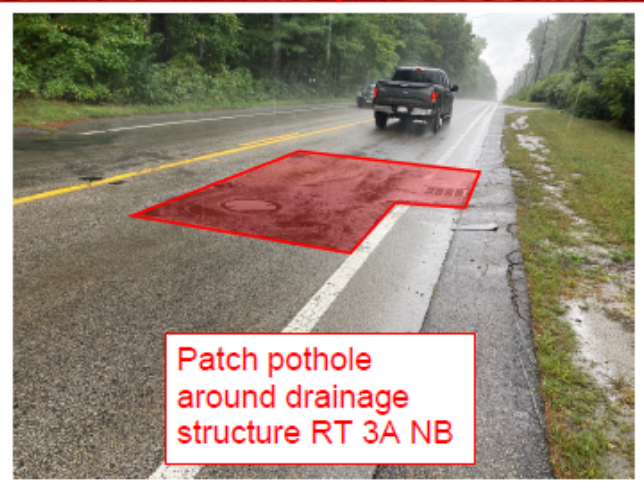
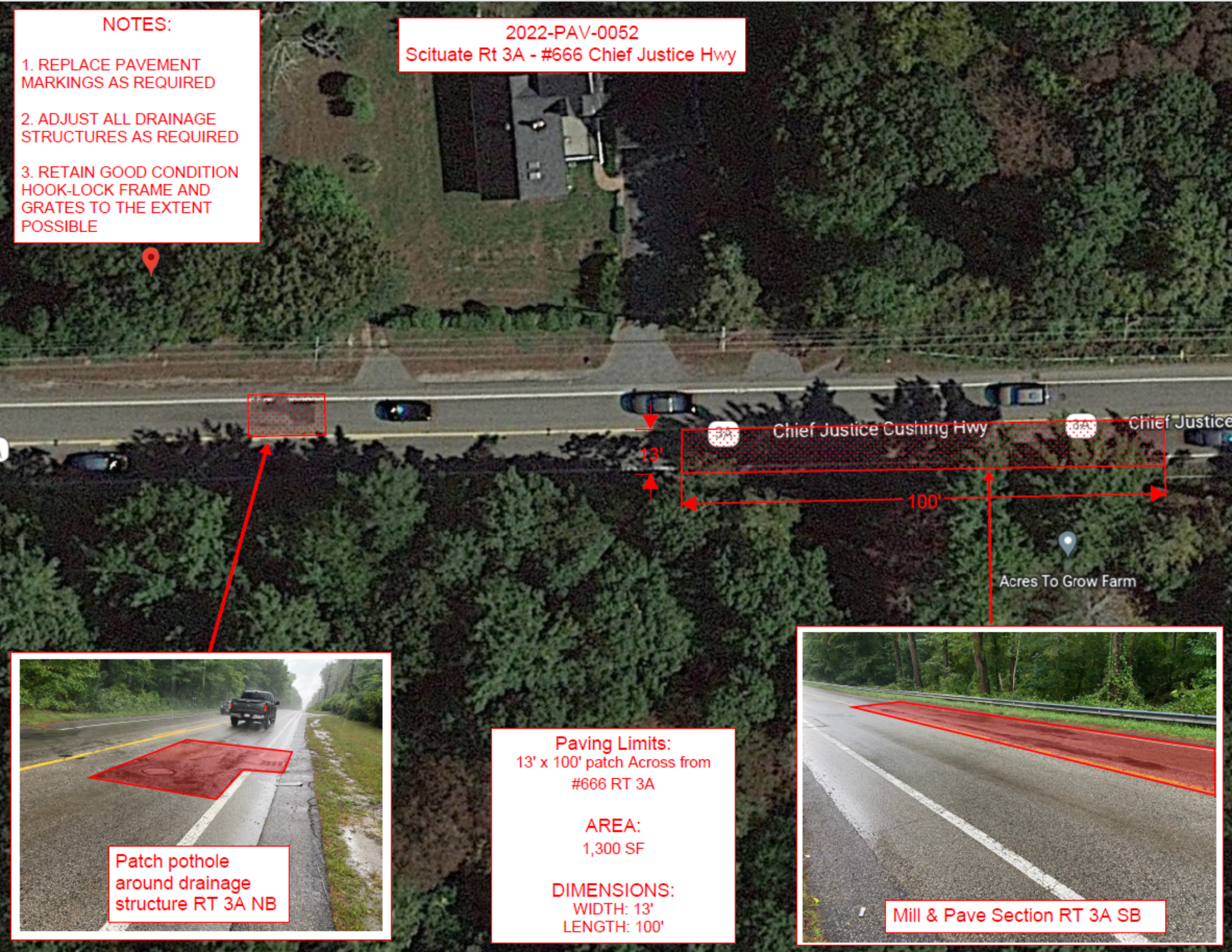


NOTES:

- 1. REPLACE PAVEMENT MARKINGS AS REQUIRED
- 2. ADJUST ALL DRAINAGE STRUCTURES AS REQUIRED
- 3. RETAIN GOOD CONDITION HOOK-LOCK FRAME AND GRATES TO THE EXTENT POSSIBLE

2022-PAV-0052
Scituate Rt 3A - #666 Chief Justice Hwy



Patch pothole around drainage structure RT 3A NB



Mill & Pave Section RT 3A SB

Paving Limits:
13' x 100' patch Across from #666 RT 3A

AREA:
1,300 SF

DIMENSIONS:
WIDTH: 13'
LENGTH: 100'