



Town of Scituate

600 Chief Justice Cushing Highway
Scituate, MA 02066
Telephone (781) 545-8732
Fax (781) 545-8704
smccarthy@scituatema.gov

Department of Public Works

Sean McCarthy
Engineering Supervisor

Dear Resident,


The Scituate Department of Public Works has commenced an Illicit Discharge Detection and Elimination (IDDE) outfall inspection program to find and remove illicit discharges in the Town's storm drainage system. Illicit discharges are direct connections or indirect discharges into the municipal storm drain system that is not composed entirely of stormwater.

Scituate is authorized by the State and the EPA to discharge stormwater runoff into local waterways in accordance with the Clean water Act. It is our responsibility to meet these conditions and prevent leaking septic or other illegal substances from entering our stormwater drainage system.

The Town will begin its IDDE program by monitoring stormwater discharge points beginning next week, November 30, 2020 as required by the Small Municipal Separate Storm Sewer System (MS4) General Permit. Crews will be focusing on high priority catchment areas including Musquashicut Pond, Egypt Beach, Sand Hills, Front Street and the neighborhoods surrounding Old Oaken Bucket Pond (areas shown in orange on attached plan). These areas have the most potential for illicit discharges and/or are in a watershed with an impairment for bacteria. The results of this work will be used to direct further IDDE investigations including visual and building inspections to identify and remove confirmed illicit discharges from our drainage system. In order to perform these inspections, crews may need to access private property. The engineering firms Horsley Witten Group and Woodard and Curran along with their subcontractor, SDE Engineering, will be conducting this work on our behalf and will be wearing proper identification. Contact information and photos of the SDE Team are attached.

If you have any questions regarding IDDE outfall inspections or crew activity, please do not hesitate to contact the Scituate Department of Public Works at 781-545-8732 ext. 5.

Sincerely,


Sean McCarthy
Engineering Supervisor



**Scituate IDDE
Catchment Prioritization
Scituate, MA**

- Quidley Properties - Fall 2020
- Source Building
- Stormwater Drain Pipe
- Stormwater Catchment
- Stormwater Discharge Points
- Mid-Catch
- Stormwater Outfall
- Upstream Discharge
- Discharge to EUP
- Outfall Not Installed

- IDDE Prioritization Status - High
- IDDE Prioritization Status - Medium
- IDDE Prioritization Status - Low

- 2014 Integrated List Data - 305(b)(2)(B)(i)
Category
- 1 - Address gaps only, addresses not installed
 - 2 - Noises eliminated
 - 3 - 44 - Address - TICS installed
 - 4 - 45 - Payment not received by 3/31/17
 - 5 - Address - TICS installed

Scale: 0 0.125 0.25 0.5 0.75 1 Mile

North Arrow

Project # 231429-00
Map Created December 2018

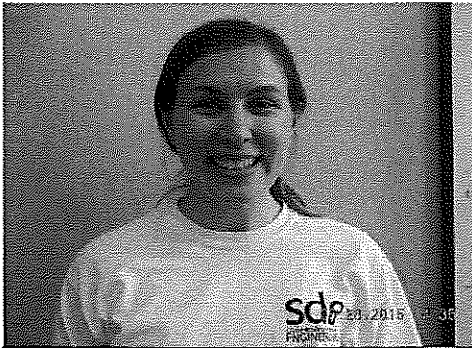
This is a preliminary map. It is not intended to be used for legal purposes. It is not intended to be used for legal purposes. It is not intended to be used for legal purposes.

SDE ENGINEERING

Garrett Bergey – Director of Field Operations

Phone: (978) 975-0500

Sara Ray - Field Lead



Phone: 978-960-9366
Email: sray@sde-inc.com

Elizabeth Olson



Luis Cornieles



Matthew Baptista



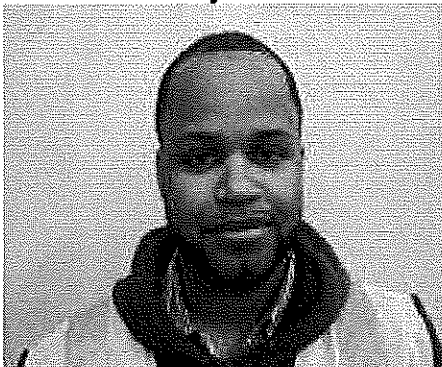
Jonathan Sano



Meaghan O'Dwyer



Randy Jaime



Matthew Silverman

