

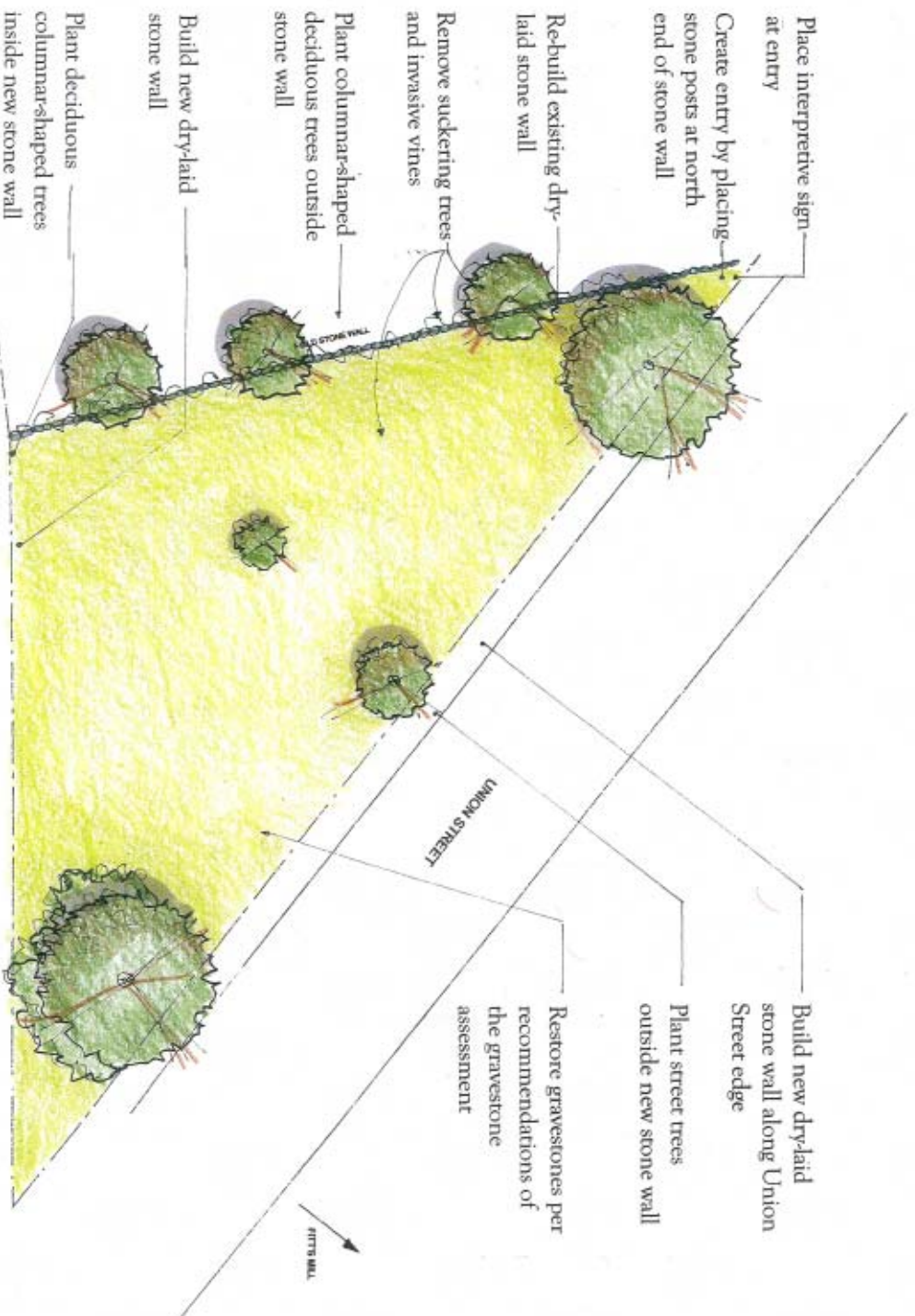
# CLAPP FAMILY CEMETERY

Location: Union Street (south side  
of Union Street, east of  
Old Country Way,  
Greenbush)

Established: c. 1774

## Map Source(s):

- Town of Schuette Assessor's Map #53
- Schuette Historical Society Files
- Technical Report: Archaeological  
Reconnaissance Greenbush Line Rail  
Restoration Project (Public Archaeology  
Laboratory, October 2003)
- Field investigation completed by  
Martha Lyon Landscape Architecture,  
LLC, 2004-2005



## BURIAL SITES SURVEY

Schuette, Massachusetts

Martha Lyon Landscape Architecture, LLC  
Parrish-Leibner Preservation Consultants  
CMF Associates, Inc.

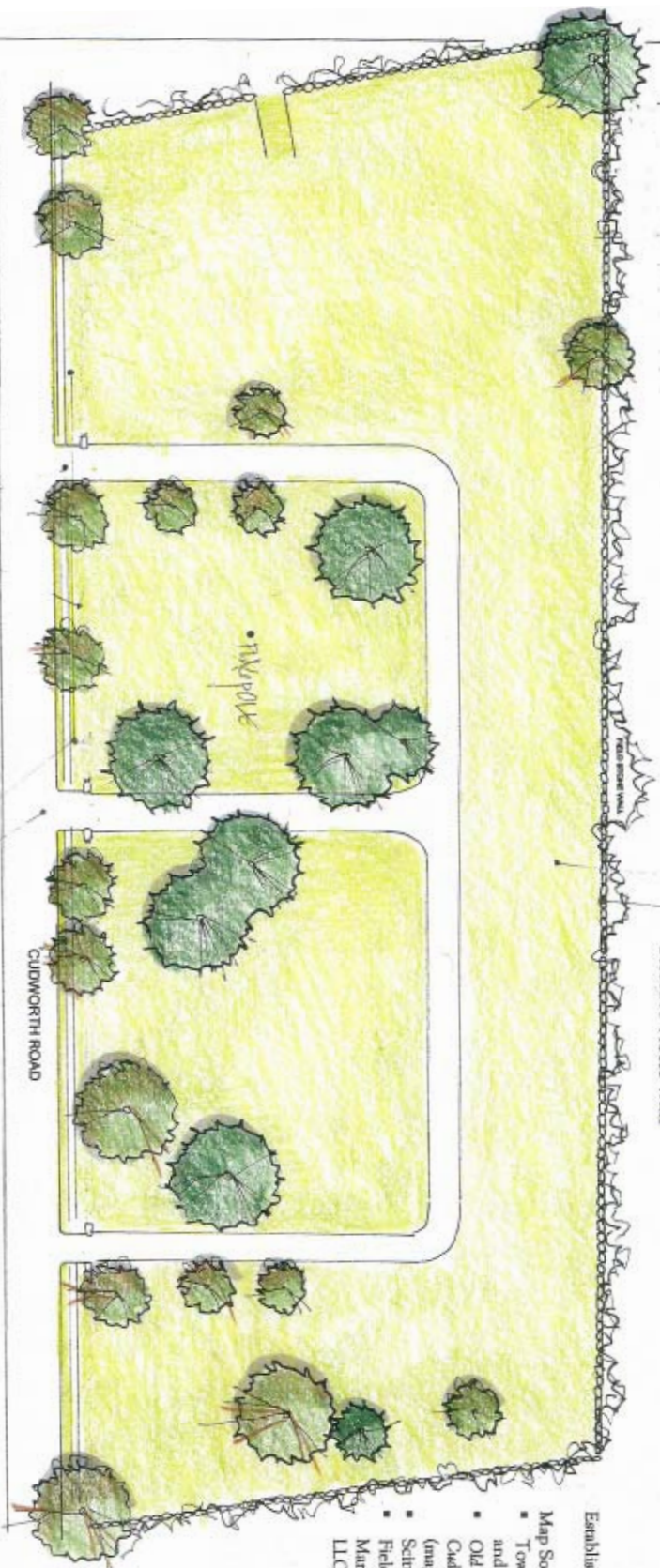
# CUDWORTH CEMETERY

Location: Cudworth Road (east side of Cudworth Road, opposite the Schuette Historical Society Building, Schuette Centre)

Established: c. 1800

## Map Source(s):

- Town of Schuette Assessor's Map #37 and #38
- Old Common Cemetery, Schuette, Mass., Cudworth Road, WPA Project 18974 (map)
- Schuette Historical Society Files
- Field Investigation completed by Murtha Lyon Landscape Architecture, LLC, 2004-2005



- Complete inventory and assessment of trees, remove diseased/dying species, re-plant with large shade tree species
- Remove shrubs; institute a "no shrub policy"

Preserve gravestones per recommendations of the Gravestone Assessment

Restore stone wall

- Replace bituminous roadways with chip seal, edged with reinforced turf shoulders
- Rebuild missing perimeter wall

Relocate utility poles to west side of Cudworth Road

Create a crosswalk and connection to Laidlaw Historical Center

Place an interpretive sign at the center entrance



## BURIAL SITES SURVEY

Schuette, Massachusetts

Murtha Lyon Landscape Architecture, LLC  
Finan/Lachner Preservation Consultants  
CM&E Associates, Inc.



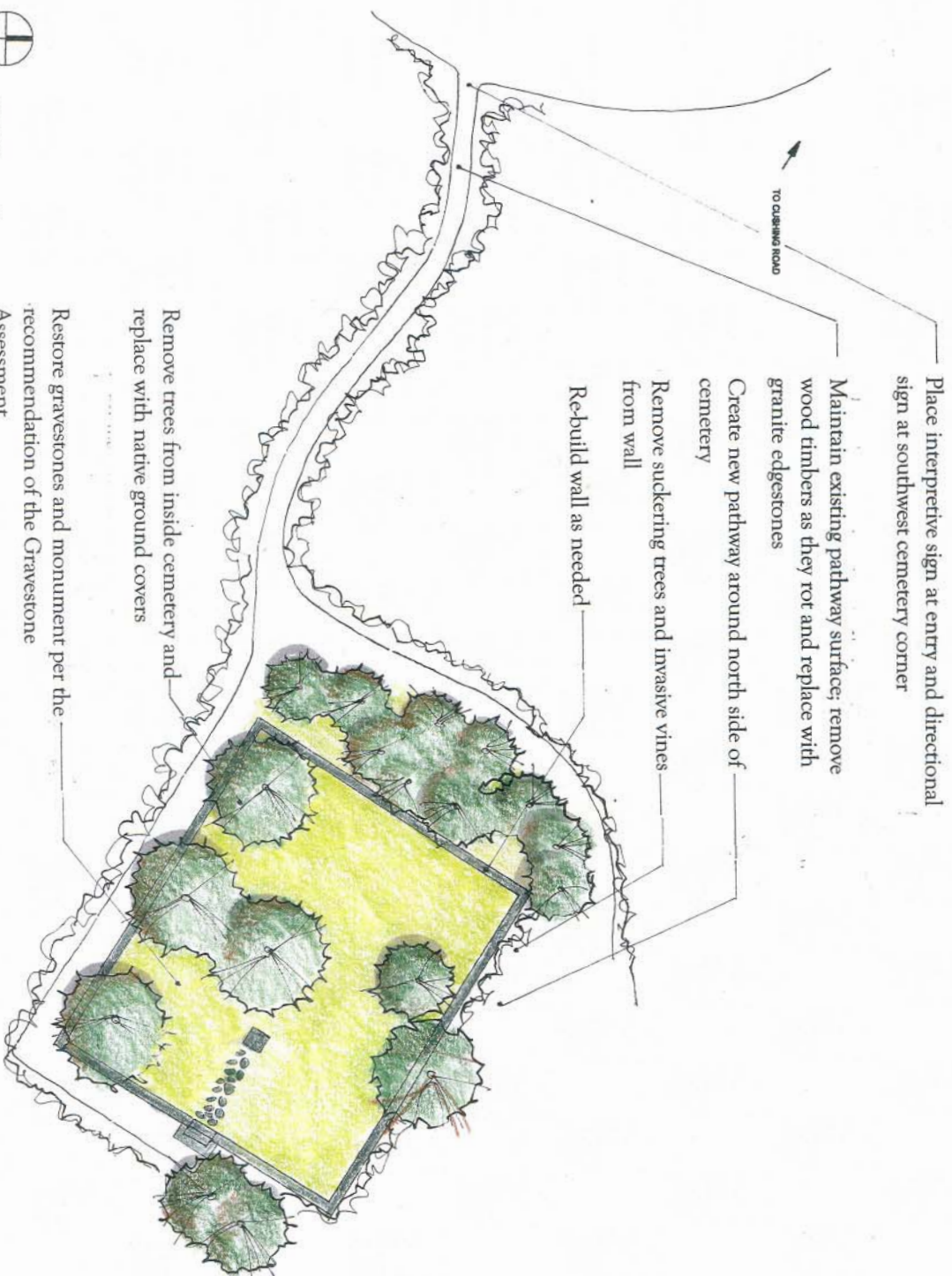
# CUSHING FAMILY CEMETERY

Location: Neal Gate Street (off  
Route 3A, Greenbush)

Established: c. 1757

## Map Source(s):

- Town of Scituate Assessor's Map #57 and #58
- Scituate Historical Society Files
- Field Investigation completed by Martha Lyon Landscape Architecture, LLC, 2004-2005



## BURIAL SITES SURVEY

Scituate, Massachusetts

Martha Lyon Landscape Architecture, LLC  
Fennel-Lehner Preservation Consultants  
CME Associates, Inc.

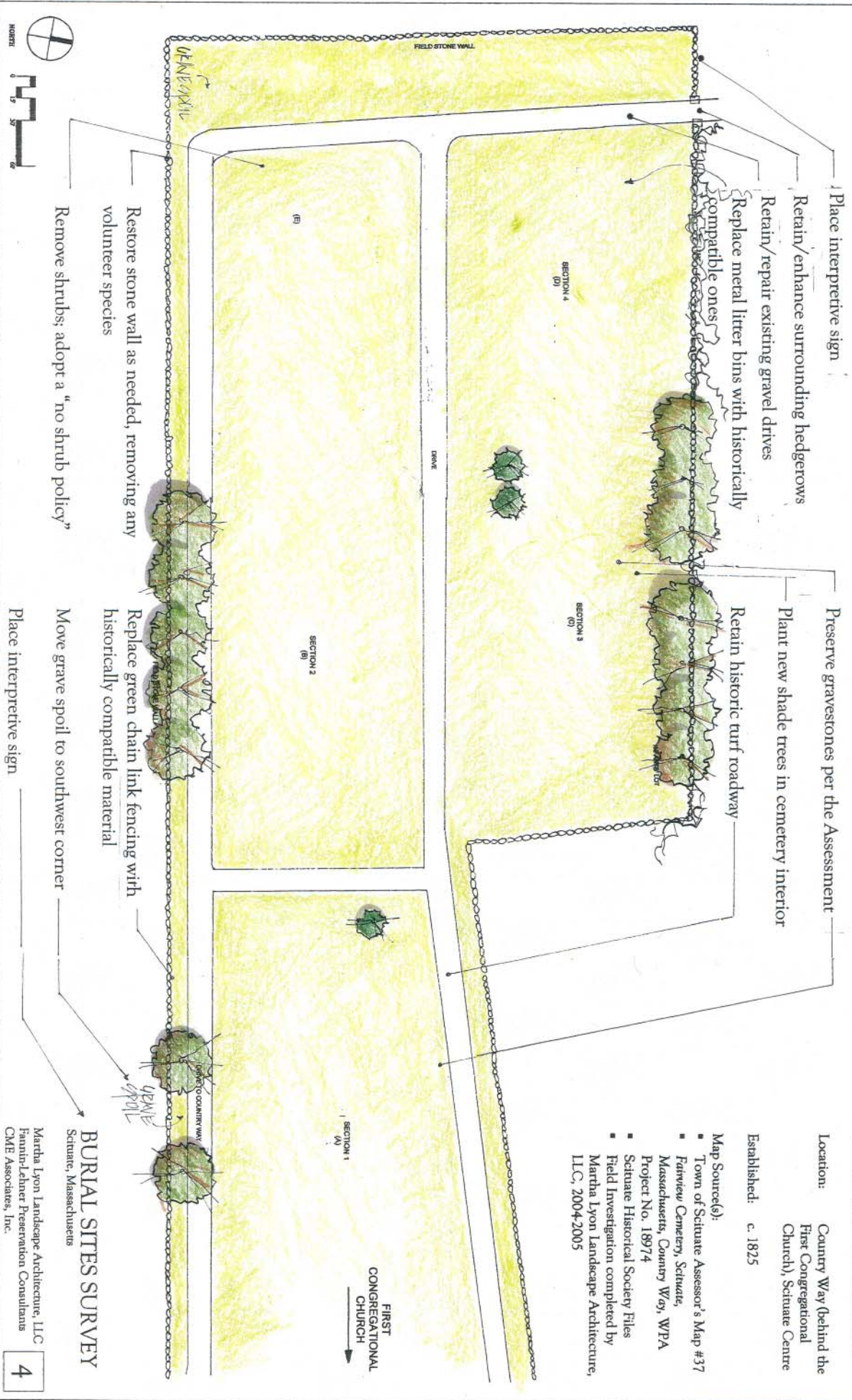
# FAIRVIEW CEMETERY

Location: Country Way (behind the First Congregational Church), Scituate Centre

Established: c. 1825

## Map Source(s):

- Town of Scituate Assessor's Map #37
- Fairview Cemetery, Scituate, Massachusetts, Country Way, WPA Project No. 18974
- Scituate Historical Society Files
- Field Investigation completed by Martha Lyon Landscape Architecture, LLC, 2004-2005



## BURIAL SITES SURVEY

Martha Lyon Landscape Architecture, LLC  
Fanning-Labner Preservation Consultants  
CMF Associates, Inc.



# GROVELAND CEMETERY

Location: Mann Lot Road (east side of Mann Lot Road, between Country Way and Pratt Street), North Scituate

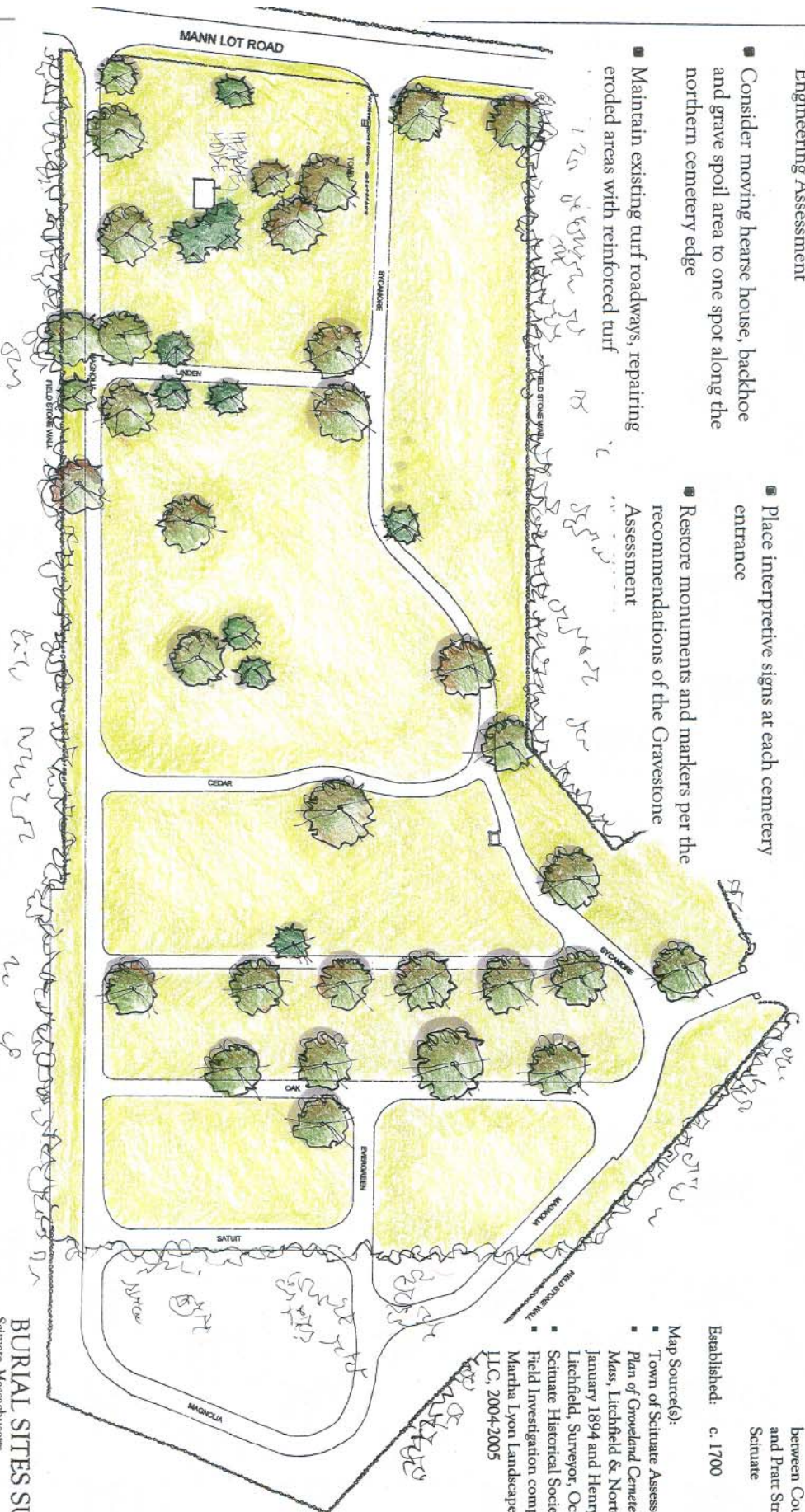
Established: c. 1700

## Map Source(s):

- Town of Scituate Assessor's Map #20
- Plan of Groveland Cemetery, Scituate, Mass., Litchfield & Norton Surveyors, January 1894 and Henry A. Litchfield, Surveyor, October 1911
- Scituate Historical Society Files
- Field Investigation completed by Martha Lyon Landscape Architecture, LLC, 2004-2005

- Restore historic walls, gateposts, gates and tomb per the recommendations of the Engineering Assessment
- Consider moving hearse house, backhoe and grave spoil area to one spot along the northern cemetery edge
- Maintain existing turf roadways, repairing eroded areas with reinforced turf

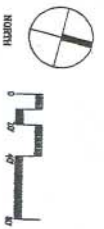
- Replace diseased and dying trees with a diversity of tree species
- Place interpretive signs at each cemetery entrance
- Restore monuments and markers per the recommendations of the Gravestone Assessment



## BURIAL SITES SURVEY

Scituate, Massachusetts

Martha Lyon Landscape Architecture, LLC  
Fannin-Lehner Preservation Consultants  
CME Associates, Inc.





# HATCH BURYING GROUND

Location:

Judge Cushing Way (east side of Judge Cushing Way, west side of Route 3A), Greenbush

Established: c. 1796

Map Source(s):

- Town of Scituate Assessor's Map #52
- Plan of Land in the Town of Scituate, Massachusetts, 134 Judge Cushing Way (Ross Engineering, June 8, 2004)
- Scituate Historical Society Files
- Field Investigation completed by Martha Lyon Landscape Architecture, LLC, 2004-2005

Place an interpretive sign at the start of the pedestrian easement where it meets Judge Cushing Way

Create a stepped walkway leading from the road to the burying ground

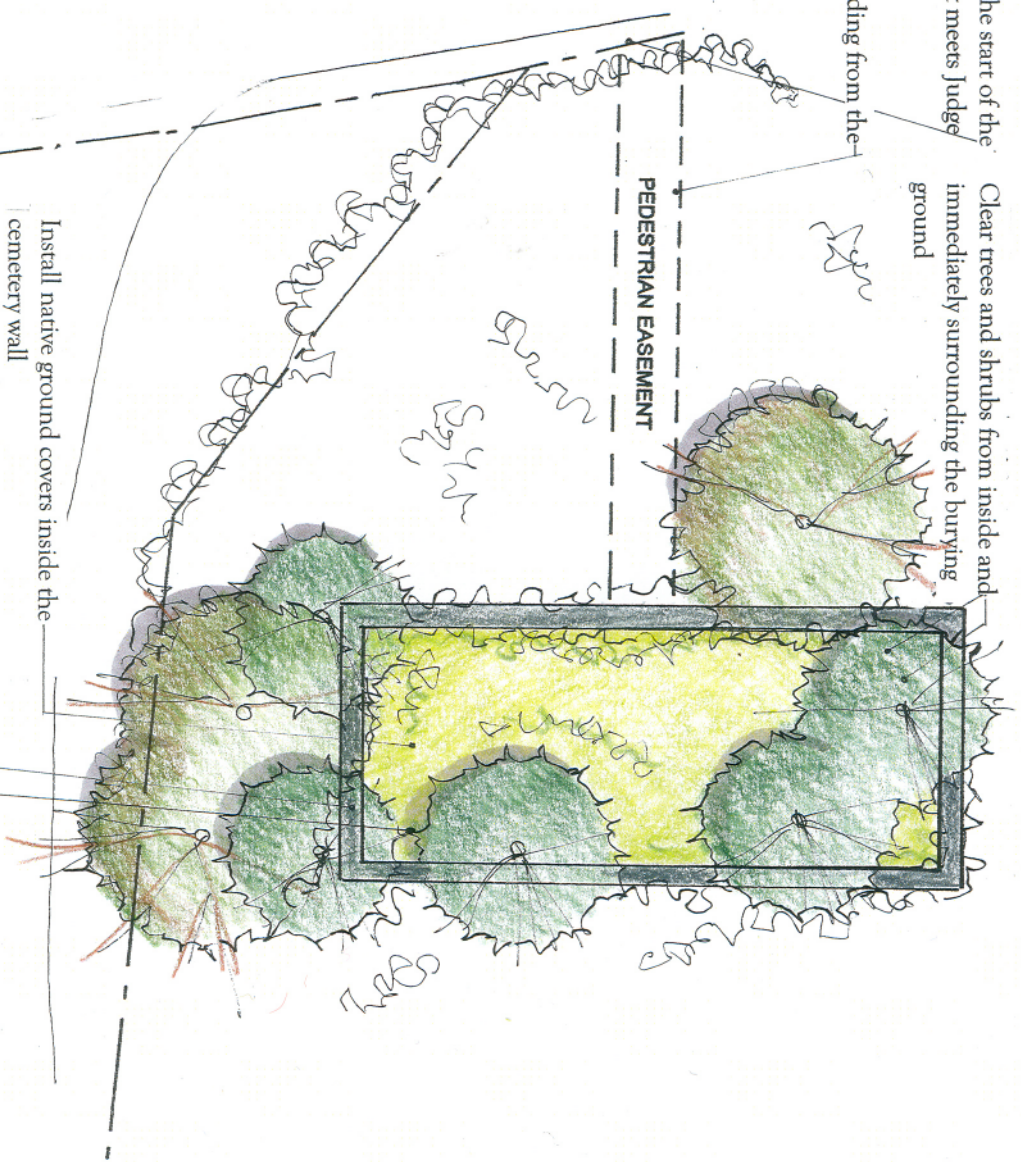
Clear trees and shrubs from inside and immediately surrounding the burying ground

PEDESTRIAN EASEMENT

JUDGE CUSHING WAY



NORTH



Install native ground covers inside the cemetery wall

Preserve the burying ground perimeter wall

Preserve gravestones per the recommendations of the Gravestone Assessment

134 JUDGE CUSHING WAY

## BURIAL SITES SURVEY

Scituate, Massachusetts

Martha Lyon Landscape Architecture, LLC  
Farrin-Lehner Preservation Consultants  
CME Associates, Inc.

# JAMESCLAPP CEMETERY

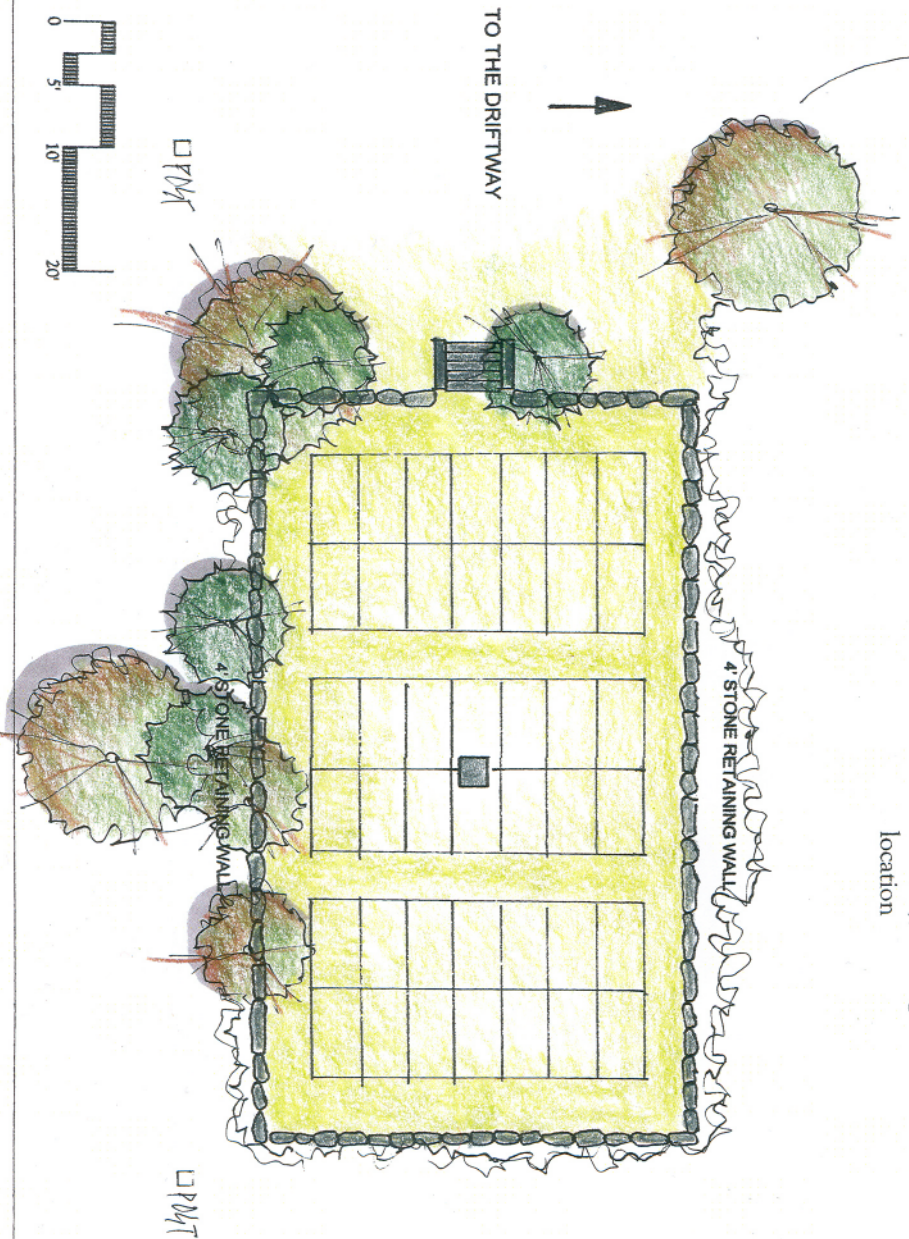
Location: Driftway (south of the Driftway, west of Ladd's Way), Greenbush

Established: c. 1797

## Map Source(s):

- Town of Scituate Assessor's Map #53
- James Cemetery off Driftway, Greenbush, Scituate, Massachusetts (map), WPA Project No. 18974
- Scituate Historical Society Files
- Technical Report: Historic Cemetery Delineation, James Cemetery for the Marina at James Landing Redevelopment/The Residences at Herring Brook (Public Archaeology Laboratory, February 2005)
- Field investigation completed by Martha Lyon Landscape Architecture, LLC, 2004-2005

- Clear perimeter of trees, shrubs and invasive ground covers
- Place new granite posts at north and east corners; install steel chain to connect posts
- Preserve the perimeter wall per the recommendations of the Engineering Assessment
- Preserve the monuments and markers per the recommendations of the Gravestone Assessment
- Plant native ground covers on the cemetery floor
- Place an interpretive sign along the Driftway, alerting visitors to the cemetery's location



## BURIAL SITES SURVEY

Scituate, Massachusetts

Martha Lyon Landscape Architecture, LLC  
Fannin-Lehner Preservation Consultants  
CME Associates, Inc.



Create pull-off parking area for visitors at west end of the cemetery

Formalize the entry by placing a gate at the existing stone posts and placing an interpretive sign

Preserve/reconstruct the perimeter wall as needed

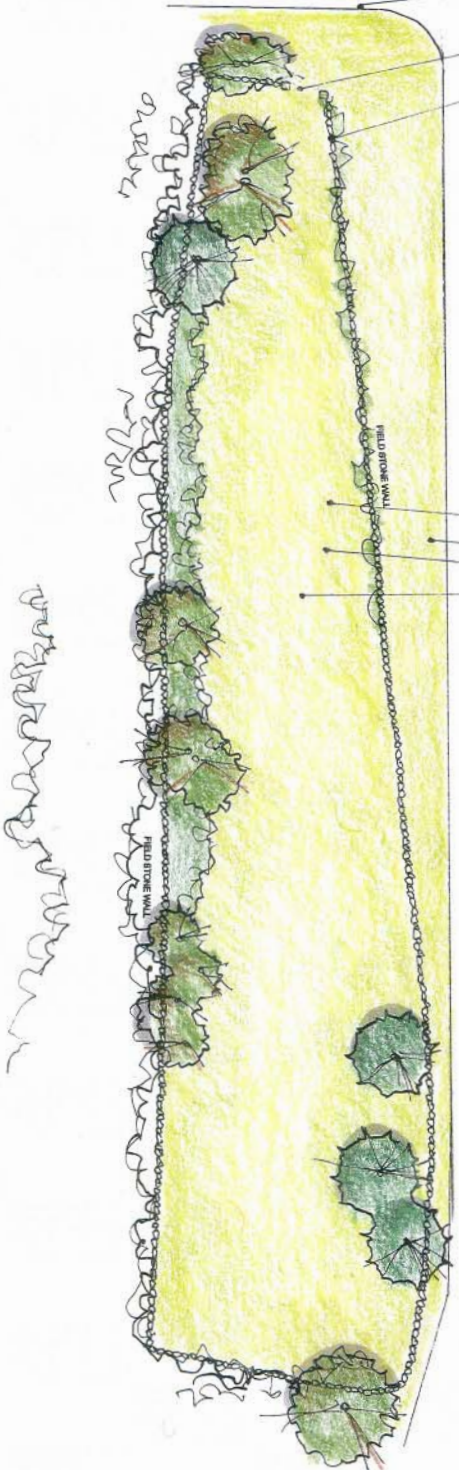
Remove decaying and dead trees from cemetery interior and along outside of cemetery wall

Plant street trees at even intervals to reinforce Meeting House Lane edge

Encourage the growth of perennial ground covers on the cemetery floor

Restore monuments and markers per the recommendations of the Gravestone Assessment

MEETING HOUSE LANE



## MEN OF KENT CEMETERY

Location: Meeting House Lane  
(south side of Meeting House Lane, west of Kent Street), Scituate

Established: c. 1624

### Map Source(s):

- Town of Scituate Assessor's Map #55
- Scituate Historical Society Files
- Field Investigation completed by Martha Lyon Landscape Architecture, LLC, 2004-2005

## BURIAL SITES SURVEY

Scituate, Massachusetts

Martha Lyon Landscape Architecture, LLC  
Fanning-Lehner Preservation Consultants  
CME Associates, Inc.



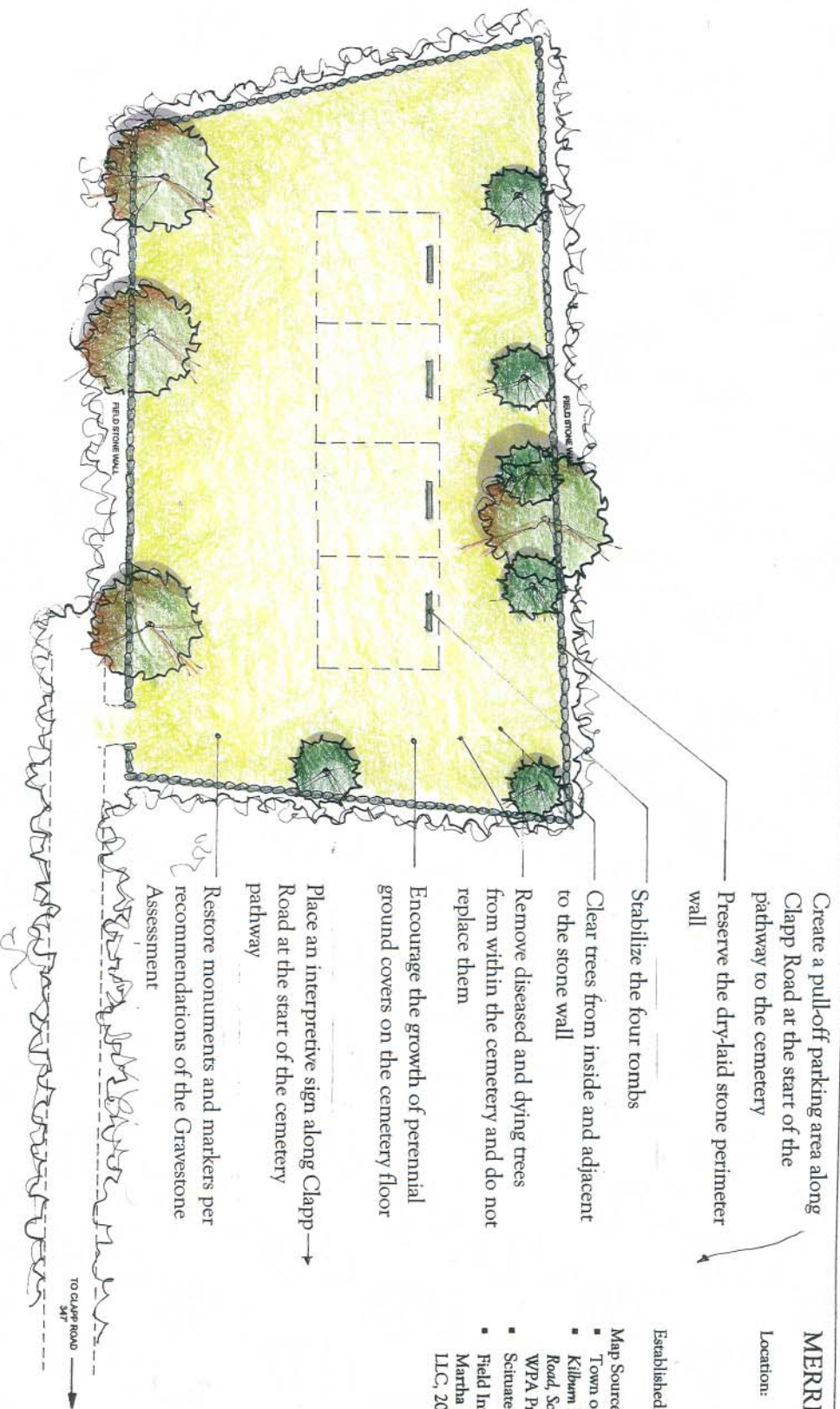
# MERRITT CEMETERY

Location: Clapp Road (north side of Clapp Road, west of Mann Lot Road), North Scituate

Established: c. 1811

## Map Source(s):

- Town of Scituate Assessor's Map #9
- Kilburn Merritt Cemetery off Clapp Road, Scituate, Massachusetts (map), WPA Project No. 18974
- Scituate Historical Society Files
- Field Investigation completed by Martha Lyon Landscape Architecture, LLC, 2004-2005



## BURIAL SITES SURVEY

Scituate, Massachusetts

Martha Lyon Landscape Architecture, LLC  
Fannin-Lehner Preservation Consultants  
CME Associates, Inc.

# MOUNT HOPE CEMETERY

Location: Clapp Road (north side of Clapp Road), North Scituate

Established: 1878

- Map Source(s):
- Town of Scituate Assessor's Map #17
  - Mount Hope Cemetery, Scituate, Mass., WPA Project 18974 (map)
  - Scituate Historical Society Files
  - Field Investigation completed by Martha Lyon Landscape Architecture, LLC, 2004-2005

Stabilize dry-laid stone wall along west and north sides; erect new dry-laid stone wall along east side to replace existing chain link fence

As mature sugar maples become diseased and die, replace them with a mix of deciduous tree species

Clean and re-point Clapp Road wall; clean and re-point iron entry gates

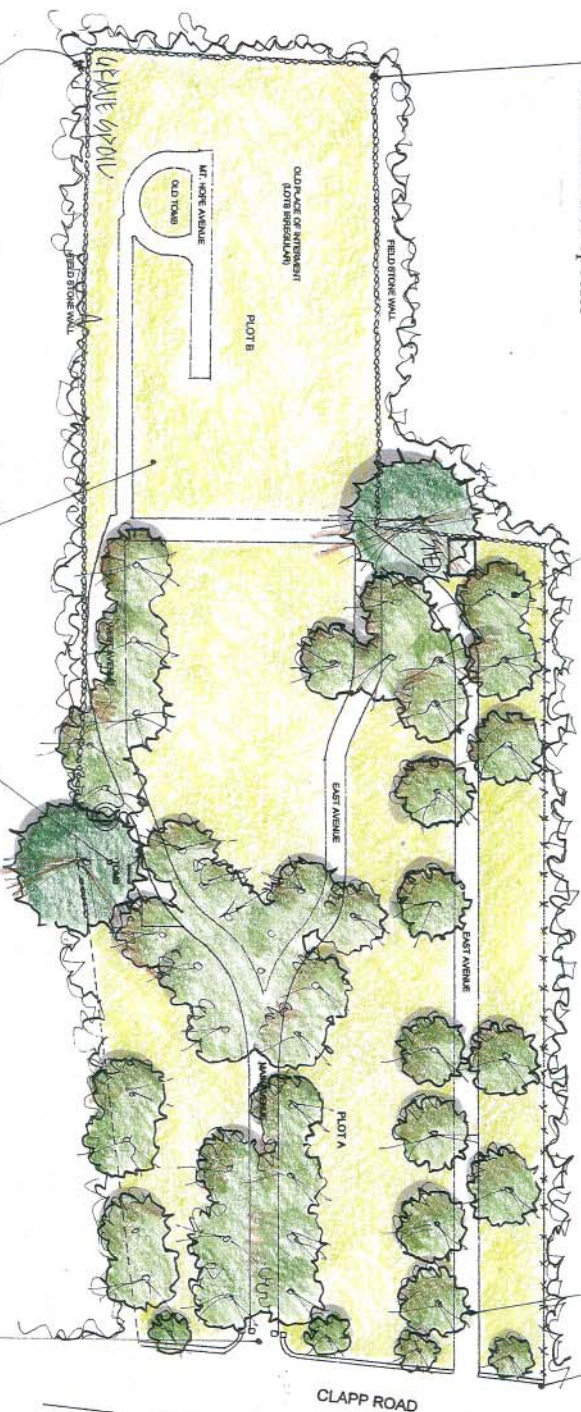
Retain existing turf roadways, enhancing any eroded areas with reinforced turf

Move grave spoil area to a screened 'yard' adjacent to the maintenance shed

Restore monuments and markers per recommendations of the Gravestone Assessment

Replace existing tomb door, re-using historic door hardware

Place an interpretive sign (matching others used in the burial sites throughout Scituate) at the entrance





# UNION CEMETERY

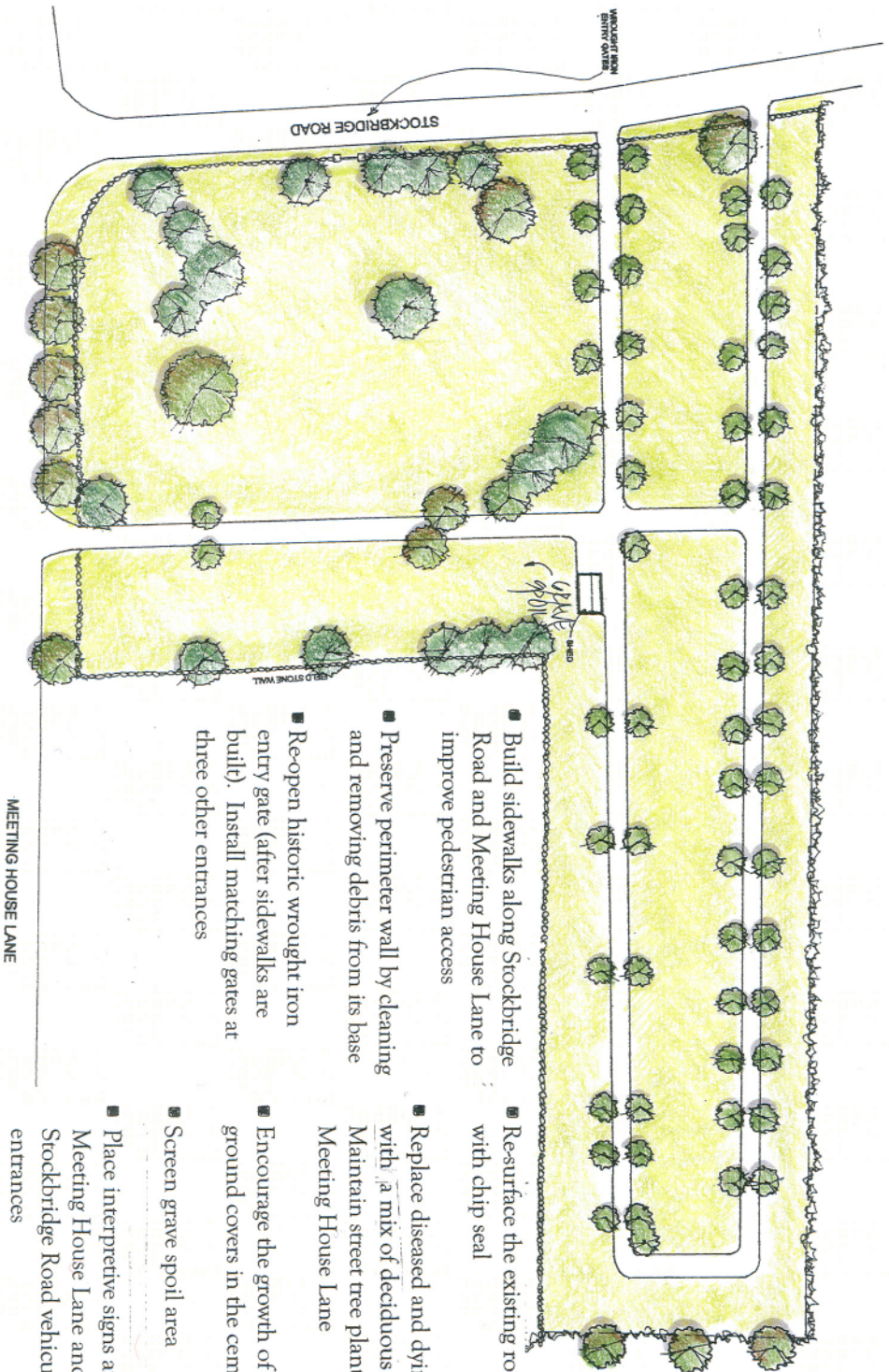
## Location:

Stockbridge Road  
(northeast corner of the  
intersection of  
Stockbridge Road and  
Meeting House Lane,  
bordered by Old St.  
Mary's Cemetery to the  
east), Scituate

Established: c. 1720

## Map Source(s):

- Town of Scituate Assessor's Map #50
- Union Cemetery, Scituate, Massachusetts (map), WPA Project No. 18974
- Scituate Public Grounds Division Files
- Field Investigation completed by Martha Lyon Landscape Architecture, LLC, 2004-2005



- Restore monuments and markers per recommendations of the Gravestone Assessment

## MEETING HOUSE LANE

- Build sidewalks along Stockbridge Road and Meeting House Lane to improve pedestrian access
- Preserve perimeter wall by cleaning and removing debris from its base
- Re-open historic wrought iron entry gate (after sidewalks are built). Install matching gates at three other entrances
- Re-surface the existing roadway with chip seal
- Replace diseased and dying trees with a mix of deciduous trees. Maintain street tree planting along Meeting House Lane
- Encourage the growth of perennial ground covers in the cemetery
- Screen grave spoil area
- Place interpretive signs at both the Meeting House Lane and Stockbridge Road vehicular entrances

## BURIAL SITES SURVEY

Scituate, Massachusetts

Martha Lyon Landscape Architecture, LLC  
Fannin/Lehner Preservation Consultants  
CME Associates, Inc.

- Preserve tomb structures by removing plants from tops, sides and backs, and reconstructing headwalls

- Replace invasive vines and existing garden plants with turf and perennial ground covers

- Place interpretive sign along Country Way

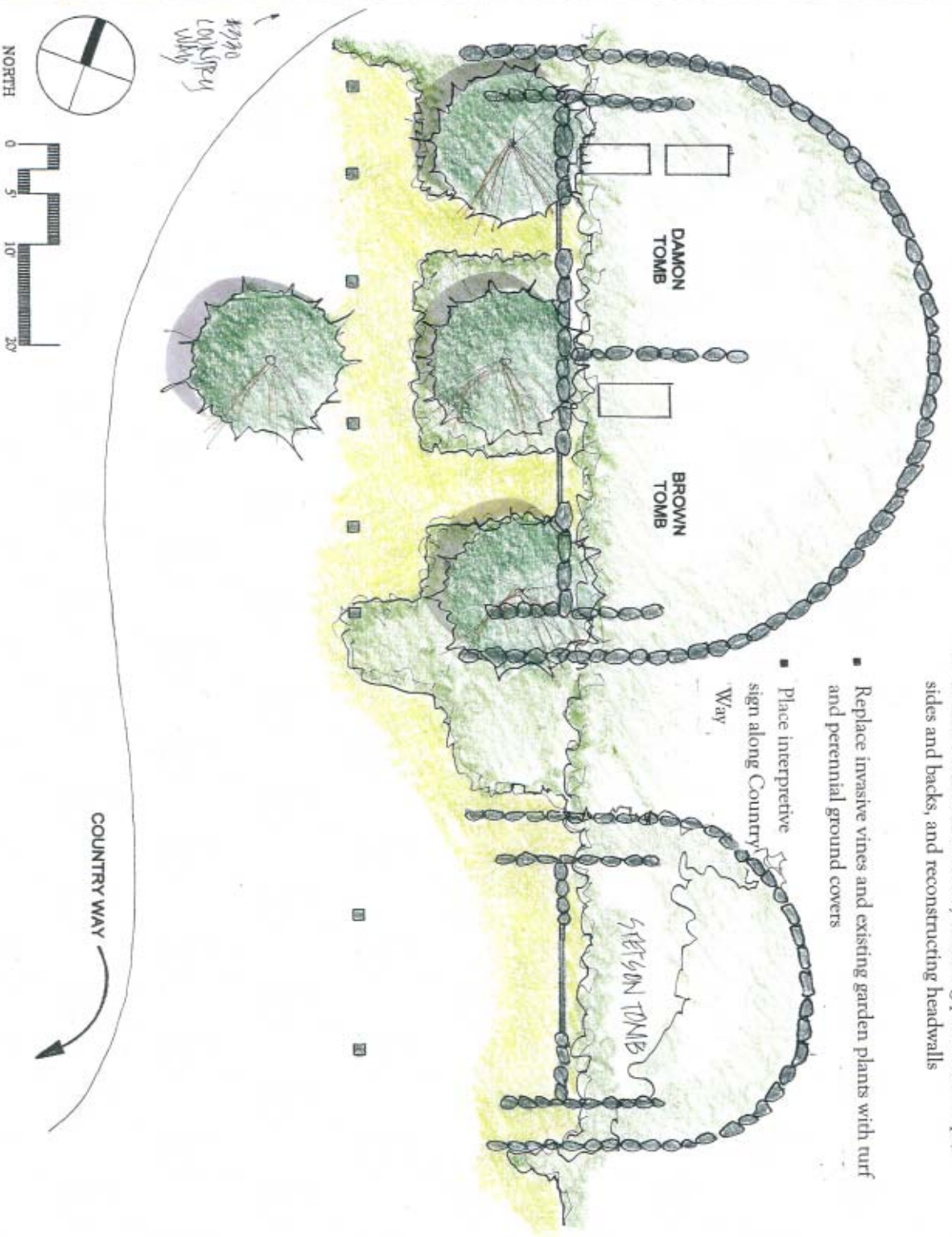
## DAMON-BROWN TOMBS

**Location:** Country Way (east side of Country Way at end of driveway leading to #330 Country Way), Scituate

**Established:** Unknown

### Map Source(s):

- Town of Scituate Assessor's Map #37
- Damon Brown Tomb, Country Way near Elm Street, Scituate, Massachusetts (map), WPA Project No. 18974
- Field Investigation completed by Martha Lyon Landscape Architecture, LLC, 2004-2005



## BURIAL SITES SURVEY

Scituate, Massachusetts

Martha Lyon Landscape Architecture, LLC  
Fennell-Lehner Preservation Consultants  
CME Associates, Inc.



## HARRUB-NORTHEY TOMBS

- Create a pull-off area along the west side of Chief Justice Cushing Highway for one to two vehicles

- Place an interpretive sign at the pull-off area

- Clear a swath from the pull-off area through the woods to the tombs, lining the path with a dry-laid stone wall

CHIEF JUSTICE CUSHING  
HIGHWAY 250'



Location: Route 3A (west side of Chief Justice Cushing Highway), Scituate  
Established: c. 1841

Map Source(s):  
■ Town of Scituate Assessor's Map #47 and #48  
■ Field Investigation completed by Martha Lyon Landscape Architecture, LLC, 2004-2005

- Remove invasive vines, shrubs and trees from in and around the tomb structures
- Reconstruct the failed cheek wall on one tomb
- Reconstruct doors to cover entrances to both tombs



## BURIAL SITES SURVEY

Scituate, Massachusetts  
Martha Lyon Landscape Architecture, LLC  
Fanning-Lechner Preservation Consultants  
CME Associates, Inc.

## VINAL-BARNES TOMB

### Location:

Booth Hill Road (south side of Booth Hill Road, set into the hillside to the east of #45 Booth Hill Road), Scituate

### Established:

Unknown

### Map Source(s):

- Town of Scituate Assessor's Map #12 and #19
- Field Investigation completed by Martha Lyon Landscape Architecture, LLC, 2004-2005

- Create a pull-off area along Booth Hill Road to provide parking for one to two vehicles. Define area with granite bollards and gravel paving

- Place an interpretive sign at the pull off area

- Reconstruct dry-laid stone walls

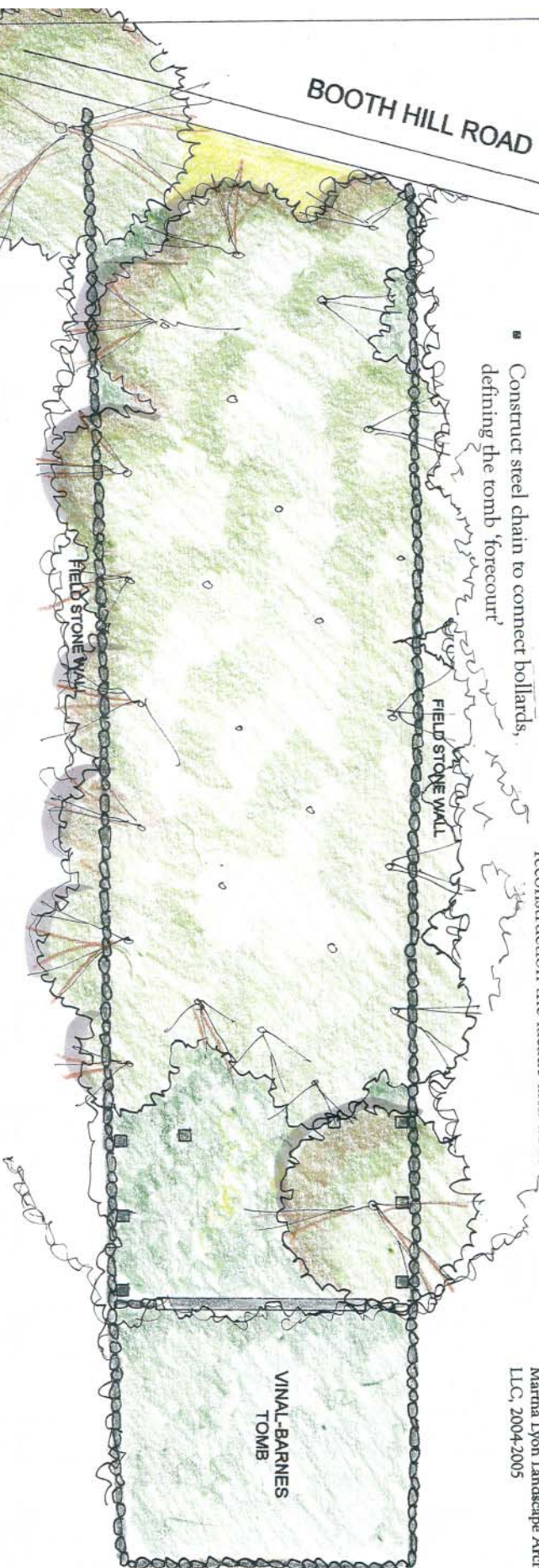
- Construct steel chain to connect bollards, defining the tomb 'forecourt'

- Remove all suckering and invasive species, leaving only the healthiest non-invasive trees

- Plant floor of tomb environs with perennial ground covers

- Restore tomb structure by removing all plants growing in and around walls and reconstruction the facade and door

BOOTH HILL ROAD



VINAL-BARNES  
TOMB

## BURIAL SITES SURVEY

Scituate, Massachusetts

Martha Lyon Landscape Architecture, LLC  
Fanning-Lehner Preservation Consultants  
CME Associates, Inc.



## LAWSON TOMB

### Location:

First Parish Road (east side of First Parish Road, adjacent to the First Parish Unitarian Church and south of the Lawson Tower), Scituate

### Established:

Unknown

### Map Source(s):

- Town of Scituate Assessor's Map #38
- Field Investigation completed by Martha Lyon Landscape Architecture, LLC, 2004-2005



## FIRST PARISH ROAD

If the town is able to determine whether the tomb existed (or exists) at this site, an effort should be made to remove all rubbish and volunteer trees, cover the floor with perennial ground covers, and place an interpretive/commemorative sign

## BURIAL SITES SURVEY

Martha Lyon Landscape Architecture, LLC  
Fannin/Lehner Preservation Consultants  
CME Associates, Inc.