

Nick And Gina

With your deck design in hand, talk to a Lowe's project specialist to start your build. You can reach us in store, online or over the phone.

In Store

Take this document or your project ID number to the customer service desk and talk to a project specialist.

Online

Go to [Lowes.com/deckinstall](https://www.lowes.com/deckinstall) and schedule an in-home consultation.

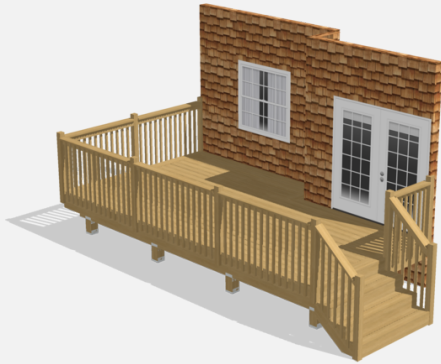
Phone

Call 1-800-GO-LOWES and schedule an in-home consultation.

YOUR DECK DESIGN PROJECT ID: 402060442

This number lets you or your project specialist retrieve your deck design.

PLAN OVERVIEW



Estimated materials cost with your
custom selections:

\$2,129

Overview

Number of Levels: 1
Total Square Feet: 165
Footer Depth: 48"
Live Load: 60psf
Dead Load: 20psf

Does not include state and local taxes.

Decking Type: Wood
Decking Size: 5/4 x 6
Decking Color: Treated

Railing Material: Wood
Railing Style: Builder
Railing Color: Treated

Joist Spacing: 16
Joist Wood Type: Pressure Treated
Joist Size: 2 x 10

Beam Size: 2 x 10
Post Wood Type: Pressure Treated
Post Size: 6 x 6

A detailed list can be found starting on page 5.

Note: Estimates are based on representative costs of materials in your geographic area. Actual, current material costs may vary.

Please contact your local Lowe's associate for pricing and installation details.

Pricing accurate as of Apr-02-2020

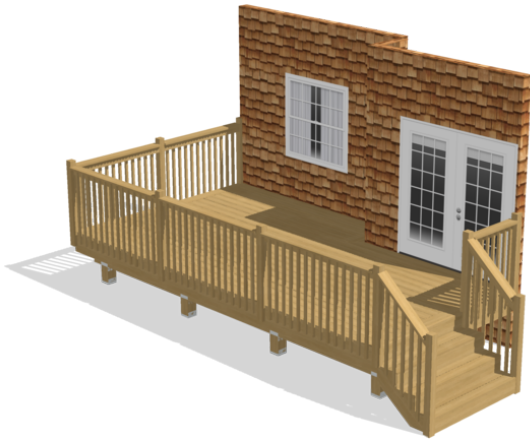
Created on Apr-02-2020

All rights reserved copyright ©2020 MiTek

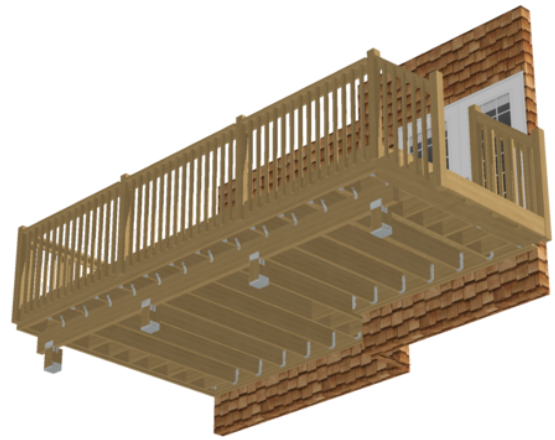
Project ID: 402060442

Product availability based on Store#: 0595

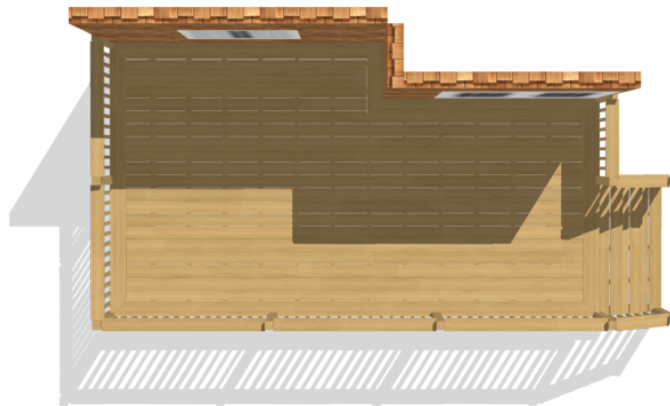
DECK LAYOUT



Birds Eye View

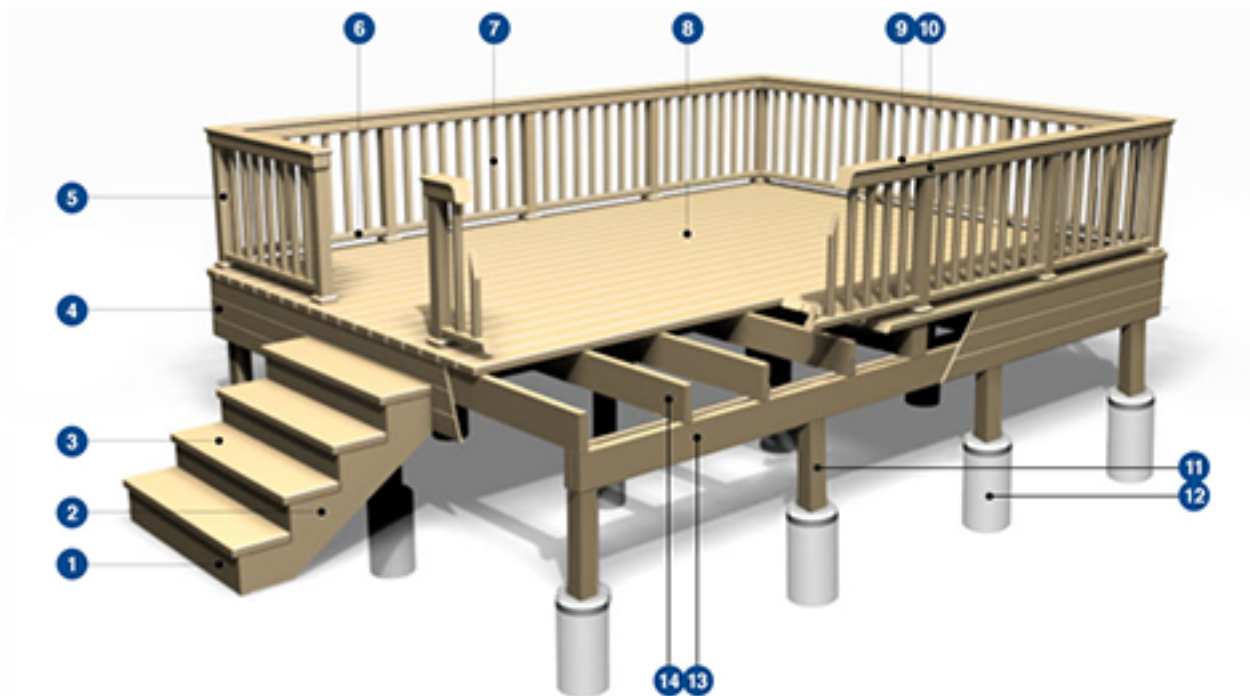


Bottom View



Top View with Planks

MAJOR DECK COMPONENTS



- 1 Riser** A board attached to the vertical cut surface of a stair stringer.
- 2 Stringer** The diagonal board used to support treads and risers on a stairway.
- 3 Tread** The horizontal surface of a stair.
- 4 Fascia** Vertical boards that face outwards from the edges of the deck, attached to the rim joists.
- 5 Rail Post** The vertical post connected to the deck framing that supports the railing.
- 6 Bottom Rail** The lower horizontal piece that connects rail posts and supports balusters.
- 7 Baluster** The vertical pieces of a railing spaced at regular intervals between posts.
- 8 Decking** The boards used to make the walking surface of the deck.
- 9 Rail Cap** The top horizontal trim on railing.
- 10 Top Rail** The upper horizontal piece that connects rail posts and supports balusters.
- 12 Post Footer** Concrete filled hole that the post is attached to.
- 13 Beam** A horizontal framing piece, which rests on posts and supports joists.
- 14 Joist** A horizontal frame piece that supports the decking and spreads the weight over the beams.

LUMBER MATERIALS

Usage	Quantity	Description	Item #
RailPost	10	Severe Weather (Common: 4-in x 4-in x 4-ft; Actual: 3.5-in x 3.5-in x 4-ft) Natural Pressure Treated Pine Deck Post DNPFS4LT15C	1336043
	73	Top Choice (Common: 2-in x 2-in x 42-in; Actual: 1.31-in x 1.31-in x 41.75-in) Pressure Treated Brown Pine Deck Baluster P42SE1T15EL	488985
	2	Severe Weather (Common: 2-in x 4-in x 6-ft; Actual: 1.375-in x 3.25-in x 6-ft) Natural Pressure Treated Pine Deck Handrail HRTFT15EL	489050
	1	Top Choice (Common: 2-in x 4-in x 10-Ft; Actual: 1.5-in x 3.5-in x 10 Feet) Pressure Treated Lumber TC2410T225EL	489073
	1	Top Choice (Common: 2-in x 4-in x 16-Ft; Actual: 1.5-in x 3.5-in x 16 Feet) Pressure Treated Lumber TC2416T225EL	489091
	1	Top Choice (Common: 5/4-in x 6-in x 8-ft; Actual: 1-in x 5.5-in x 8-ft) Radius Edge Pressure Treated Pine Deck Board	489247
	2	Top Choice (Common: 5/4-in x 6-in x 16-ft; Actual: 1-in x 5.5-in x 16-ft) Radius Edge Pressure Treated Pine Deck Board	489270
	1	Top Choice (Common: 2-in x 12-in x 10-Ft; Actual: 1.5-in x 11.25-in x 10 Feet) Pressure Treated Lumber	489225
Fascia	3	Top Choice (Common: 2-in x 12-in x 16-Ft; Actual: 1.5-in x 11.25-in x 16 Feet) Pressure Treated Lumber TC21216T225EL	489239
Fascia	2	Severe Weather Max (Common: 5/4-in x 6-in x 8-ft; Actual: 1-in x 5.5-in x 8-ft) Radius Edge Pressure Treated Pine Deck Board	489024
	1	Severe Weather Max (Common: 5/4-in x 6-in x 10-ft; Actual: 1-in x 5.5-in x 10-ft) Radius Edge Pressure Treated Pine Deck Board	489030

Usage	Quantity	Description	Item #
	2	Severe Weather Max (Common: 5/4-in x 6-in x 16-ft; Actual: 1-in x 5.5-in x 16-ft) Radius Edge Pressure Treated Pine Deck Board	489135
	2	Severe Weather Max (Common: 5/4-in x 6-in x 10-ft; Actual: 1-in x 5.5-in x 10-ft) Radius Edge Pressure Treated Pine Deck Board	489030
	17	Severe Weather Max (Common: 5/4-in x 6-in x 16-ft; Actual: 1-in x 5.5-in x 16-ft) Radius Edge Pressure Treated Pine Deck Board	489135
Header	1	Top Choice (Common: 2-in x 10-in x 8-Ft; Actual: 1.5-in x 9.25-in x 8 Feet) Pressure Treated Lumber	489195
Header	1	Top Choice (Common: 2-in x 10-in x 12-Ft; Actual: 1.5-in x 9.25-in x 12 Feet) Pressure Treated Lumber	489210
Header	1	Top Choice (Common: 2-in x 10-in x 16-Ft; Actual: 1.5-in x 9.25-in x 16 Feet) Pressure Treated Lumber TC21016T225EL	489215
	1	Top Choice (Common: 2-in x 10-in x 10-Ft; Actual: 1.5-in x 9.25-in x 10 Feet) Pressure Treated Lumber	489205
	1	Top Choice (Common: 2-in x 10-in x 16-Ft; Actual: 1.5-in x 9.25-in x 16 Feet) Pressure Treated Lumber TC21016T225EL	489215
Beam	2	Top Choice (Common: 2-in x 10-in x 8-Ft; Actual: 1.5-in x 9.25-in x 8 Feet) Pressure Treated Lumber	489195
Beam	2	Top Choice (Common: 2-in x 10-in x 12-Ft; Actual: 1.5-in x 9.25-in x 12 Feet) Pressure Treated Lumber	489210
Post	1	Severe Weather (Common: 6-in x 6-in x 8-Ft; Actual: 5.5-in x 5.5-in x 8 Feet) Pressure Treated Lumber 668T240C	456216
Outer Joist	1	Top Choice (Common: 2-in x 10-in x 8-Ft; Actual: 1.5-in x 9.25-in x 8 Feet) Pressure Treated Lumber	489195

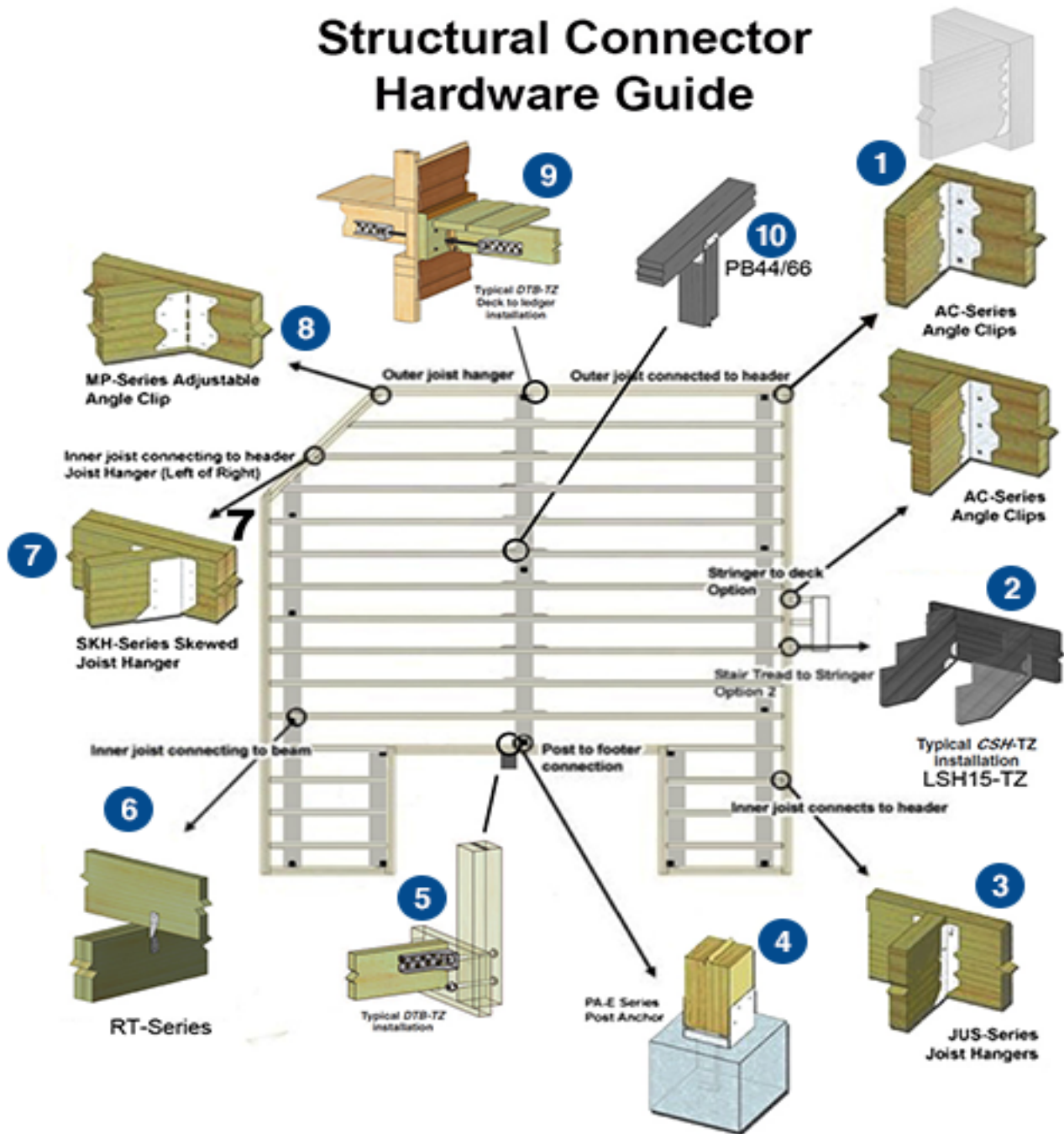
Usage	Quantity	Description	Item #
Outer Joist	1	Top Choice (Common: 2-in x 10-in x 12-Ft; Actual: 1.5-in x 9.25-in x 12 Feet) Pressure Treated Lumber	489210
Internal Joist	6	Top Choice (Common: 2-in x 10-in x 8-Ft; Actual: 1.5-in x 9.25-in x 8 Feet) Pressure Treated Lumber	489195
Internal Joist	7	Top Choice (Common: 2-in x 10-in x 10-Ft; Actual: 1.5-in x 9.25-in x 10 Feet) Pressure Treated Lumber	489205
	1	Top Choice (Common: 2-in x 12-in x 16-Ft; Actual: 1.5-in x 11.25-in x 16 Feet) Pressure Treated Lumber TC21216T225EL	489239
	2	Severe Weather Max (Common: 5/4-in x 6-in x 16-ft; Actual: 1-in x 5.5-in x 16-ft) Radius Edge Pressure Treated Pine Deck Board	489135
Stringer	1	Top Choice (Common: 2-in x 12-in x 10-Ft; Actual: 1.5-in x 11.25-in x 10 Feet) Pressure Treated Lumber	489225
Stringer	1	Top Choice (Common: 2-in x 12-in x 16-Ft; Actual: 1.5-in x 11.25-in x 16 Feet) Pressure Treated Lumber TC21216T225EL	489239
	1	Top Choice (Common: 2-in x 12-in x 10-Ft; Actual: 1.5-in x 11.25-in x 10 Feet) Pressure Treated Lumber	489225
	10	Top Choice (Common: 2-in x 2-in x 42-in; Actual: 1.31-in x 1.31-in x 41.75-in) Pressure Treated Brown Pine Deck Baluster P42SE1T15EL	488985

HARDWARE MATERIALS

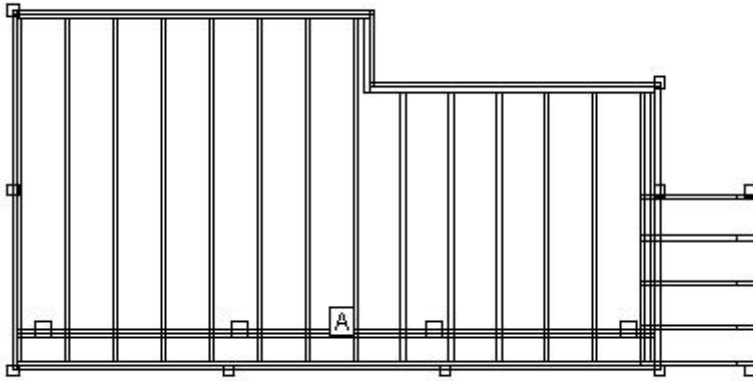
Usage	Quantity	Description	Item #
	10	USP 1-13/16-in x 2-1/4-in 14-Gauge Triple Zinc Deck Tie	76299
	1	USP 1-lb 9-Gauge 3-in Hot-Dipped Galvanized Smooth Nails N10C-1	402032
	4	USP 1-13/16-in x 2-1/4-in 14-Gauge Triple Zinc Deck Tie	76299
	2	Steelworks 0.5-in x 12-in Standard (SAE) Threaded Rod	44605
	3	USP 1-lb 9-Gauge 3-in Hot-Dipped Galvanized Smooth Nails N10C-1	402032
	1	USP 1-lb 9-Gauge 3-in Hot-Dipped Galvanized Smooth Nails N10C-1	402032
	4	Hillman 1-Count 5/8-in x 12-in Round-Head Hot-Dipped Galvanized Anchor Bolt 260284	192956
	4	Sakrete (Common: 12-in; Actual: 11.625-in) 48-in Concrete Tube Form NA	6634
	20	Power Pro #10 x 3-in Stainless Steel Deck Screws (25-Count) 42499	755698
	5	Power Pro #10 x 3-in Stainless Steel Deck Screws (25-Count) 42499	755698
	5	USP 5-in x 5-in x 1-7/16-in Triple Zinc Concealed Stringer Hanger CSH-TZ	409136
	3	Power Pro #10 x 3-in Stainless Steel Deck Screws (25-Count) 42499	755698
	20	The Hillman Group 1/2-in-13 Hot-Dipped Galvanized Round-Head Standard (SAE) Carriage Bolt, 8-in	67357
	20	1 Count 1/2-in Standard (SAE) Split Lock Washer	61817
	20	The Hillman Group 1/2-in-13 Galvanized Standard (SAE) Hex Nut	67342
	4	1-lb Box 9-Gauge 3.5-in Hot-Dipped Galvanized Wood Deck Nails 16HGSTPD1	69925

Usage	Quantity	Description	Item #
	1	5-lb Box 9-Gauge 3.5-in Hot-Dipped Galvanized Wood Deck Nails 16HGSTPD5	69928
	1	USP 2-1/4-in x 2-1/4-in x 6-7/8-in Triple Zinc Framing Angle MP9-TZ	2438
	4	5/16-IN X 3-5/8-IN PP LEDGER SCR	952221
	3	FastenMaster LedgerLOK #0 Hex Washer Standard (SAE) Structural Wood Screws	106073
	26	USP 2-in x 10-in Slant Nail Joist Hanger Triple Zinc JUS28-TZ	116239
	5	USP 1-5/16-in x 2-3/8-in x 6-15/16-in Triple Zinc Angle Clip AC7-TZ	37164
	15	USP Rafter Tie RT7A-TZ	21993
	4	1-lb Box 11-Gauge 2.5-in Hot-Dipped Galvanized Wood Deck Nails 8HGSTPD1	69923
	4	USP Steel G185 Post Base (Common: 6-in; Actual: 5.5-in) PA66E-TZ	6472
	1	Sakrete Sand Mix 60-lb High Strength Concrete Mix 121602	156087
	19	Sakrete Crack Resistant 80-lb High Strength Concrete Mix NA	293035
	8	USP Steel G185 Post Cap (Common: 6-in; Actual: 1.5-in) PB66-6TZ	163411
	1	USP 1 1/2-in 9-Gauge Hot-Dipped Galvanized Smooth Joist Hanger Nail (453.6g-Pack)	184955

Structural Connector Hardware Guide



ANALYSIS LEVEL 1



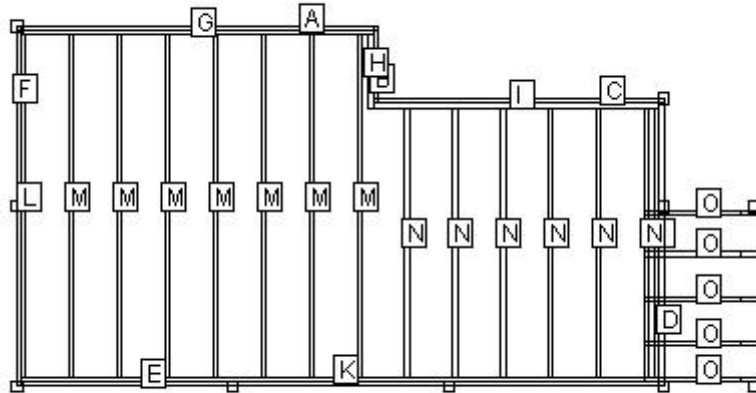
Deck and Post Height:

You selected a height of 30" from the top of the decking to the ground level. The top of the deck support posts will therefore be 10" above ground level.

Joists:

Set joists on top of beams, 16"; center to center.

MATERIALS CUT LIST: LEVEL 1



Label	Name	Quantity	Length	Bevels
A	Fascia	1	10' 1/4"	45,45
B	Fascia	1	2' 1 3/4"	45,45
C	Fascia	1	8' 1 1/4"	45,45
D	Fascia	1	8'	45,45
E	Fascia	1	18'	45,45
F	Fascia	1	10'	45,45
G	Header	1	9' 9 1/4"	
H	Outer Joist	1	2' 1/4"	
I	Header	1	7' 11 3/4"	
J	Outer Joist	1	7' 6"	
K	Header	1	17' 9"	
L	Outer Joist	1	9' 6"	

Cut Angles: L=Left, R=Right, F=Front, S=Side

Created on Apr-02-2020

All rights reserved copyright ©2020 MiTek

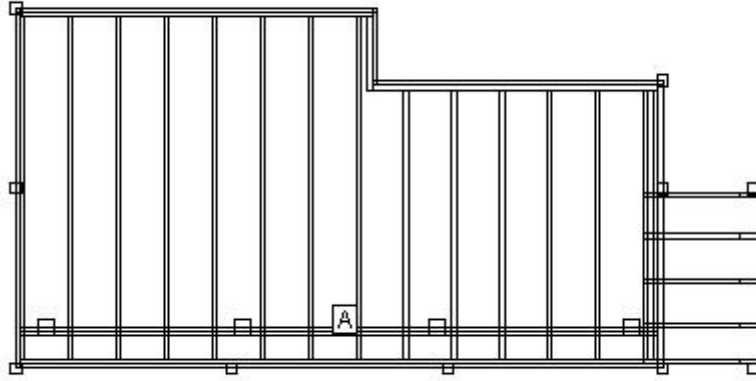
Project ID: 402060442

Product availability based on Store#: 0595

Label	Name	Quantity	Length	Bevels
M	Internal Joist	7	9' 6"	
N	Internal Joist	6	7' 6"	
O	Stringer	5	3' 4 1/4"	

Cut Angles: L=Left, R=Right, F=Front, S=Side

BEAM LAYOUT LEVEL 1



Label
A

Beam Length
17' 9"

Post Count
4

Post Spacing
5' 5 1/4"

Warning: You have prepared a preliminary design of a deck for residential purposes, including the preparation of a preliminary bill of materials and a preliminary materials pricing estimate. Materials pricing estimates do not include labor costs and are subject to change. This preliminary design is NOT intended for use as a final design and may not be sufficient for permit applications. Variations in building codes, specific architectural considerations, and/or site conditions may require changes to the preliminary design. You are responsible for the final structural, code compliance, material usage, and structural safety of this design. Be sure to check and verify the design with your architect, engineer and building inspector.

Lowe's does not assume any responsibility for design, engineering, or construction; for the use of installation of materials; or for compliance with any building code or standard of workmanship. You should consult with professionals (including an architect, engineer, licensed contractor, and/or building inspector or code official) concerning the suitability, safety, and legality of this preliminary design, rather than relying on this tool for those functions. Always refer to information on fastener packaging for use with pressure treated lumber.

Preferences: Certain assumptions have been made in order to provide an accurate material quote for your deck project. Because local codes and bylaw requirements may vary throughout the country (e.g., by municipality and state/province), it is imperative that you check with your architect, engineer, licensed contractor, and/or building inspector or code official for compliance with local requirements and building codes. The following building practice assumptions have been made in planning the materials for your project:

Footer Depth:	48"
Footer Type:	Post On Concrete
Joist Cantilever:	6 inches
Joist Spacing:	16" center to center
Spacing Between Deck Planking:	1/8"
Stair Stringers:	12 inches
Deck Live Load:	60 psf
Deck Dead Load:	20 psf
Stairs Live Load:	40 psf
Stairs Dead Load:	10 psf

Be sure to check and verify the design with your architect, engineer and building inspector.

Note: It is recommended that joist that meet on top of beams should be spliced with gussets. The gussets should be 2- by wood the same width at the joist and overlap by 6 inches on each side. These gussets should be held in place with 12 16d galvanized nails.

Handling Precautions for Pressure-Treated Wood

Disposal: Dispose of treated wood by ordinary trash collection. Treated wood should not be burned in open fires, stoves, fireplaces, or residential boilers because toxic chemicals may be produced as part of the smoke and ashes. Treated wood from commercial or industrial use (e.g construction sites) must be disposed of in accordance with state and Federal regulations, which may include burning only in commercial or industrial incinerators or boilers. Always refer to information on fastener packaging for use with pressure treated lumber.

Operating Conditions: Avoid frequent or prolonged inhalation of sawdust from treated wood. When sawing, sanding and machining treated wood, wear a dust mask. Whenever possible, these operations should be performed outdoors to avoid indoor accumulations of airborne sawdust from treated wood. (Lowe's in-store saws are equipped with a vacuum to minimize airborne sawdust).

Protection: When power-sawing and machining, wear goggles to protect eyes from flying particles.

Clean Thoroughly: Wear gloves when working with the wood. After working with the wood, and before eating, drinking, toileting, and use of tobacco products, wash exposed areas thoroughly.

Wash Separately: Because preservatives or sawdust may accumulate on clothes, they should be laundered before reuse. Wash work clothes separately from other household clothing.

For Additional Information: www.epa.gov - www.healthybuilding.net - www.ccasafetyinfo.com
www.treatedwood.com - Call: (800)282-0600 or (800)356-AWPI

Created on Apr-02-2020

All rights reserved copyright ©2020 MiTek

Project ID: 402060442

Product availability based on Store#: 0595